

NEBRASKA ADMINISTRATIVE CODE

TITLE 459, NEBRASKA ADMINISTRATIVE CODE

NEBRASKA DEPARTMENT OF NATURAL RESOURCES

Rules Relating to Boundaries of State Game Refuges

CHAPTER 1

Rules Related to Boundary of State Game Refuges
-- Various Counties, Nebraska

NEBRASKA ADMINISTRATIVE CODE

TITLE 459 --- RULES RELATING TO BOUNDARIES OF STATE GAME REFUGES

CHAPTER 1 --- RULES RELATING TO BOUNDARY OF STATE GAME REFUGES
- - VARIOUS COUNTIES, NEBRASKA

NUMERICAL TABLE OF CONTENTS

<u>SUBJECT OF TITLE</u>	<u>STATUTORY AUTHORITY</u>	<u>SUBSECTION</u>
Banks of the Stream	§ 37-707	001
Update of Boundary	§ 37-707	002
Boundary - Garden County	§ 37-707	003
Boundary - Douglas-Saunders County	§ 37-707	004
Boundary - Niobrara River	§ 37-707	005
Boundary - North Platte River	§ 37-707	006
Maps	§ 37-707	007

NEBRASKA ADMINISTRATIVE CODE

TITLE 459, NEBRASKA ADMINISTRATIVE CODE

NEBRASKA DEPARTMENT OF NATURAL RESOURCES

Rules Relating to Boundaries of State Game Refuges

CHAPTER 1

Rules Related to Boundary of State Game Refuges
-- various counties, Nebraska

001. Banks of the River. For purposes of this Chapter, the banks of the river means the words used in *Neb. Rev. Stat.* §§ 37-706(3), and is depicted by a line on maps produced by the Department of Natural Resources ("Department") using best available technical information, best available elevation information, and past and present observations of the river and adjacent lands.

002. Update of Boundary. The Department may update the boundary determination whenever it determines that there has been a substantial change in the location of the banks of the river used for locating such boundary. For purposes of this chapter, a substantial change in the location of the banks of the river will be deemed to have occurred if a horizontal movement of greater than fifteen (15) yards has occurred from the current river bank line, and such change in the river bank line has been maintained for a period of at least two (2) years. Any member of the public may request the Department to review its boundary determination by submitting a petition requesting such review. Every petition must be accompanied by a representation made by the applicant that the boundary has undergone a substantial change as defined by this section. The Department shall not be required to update the boundary determination more often than once every five (5) years.

003. Boundary - Garden County, Nebraska. See *Neb. Rev. Stat.* § 37-706(1)

004. Boundary - Douglas-Saunders County Game Refuge. See *Neb. Rev. Stat.* § 37-706(2)(a).

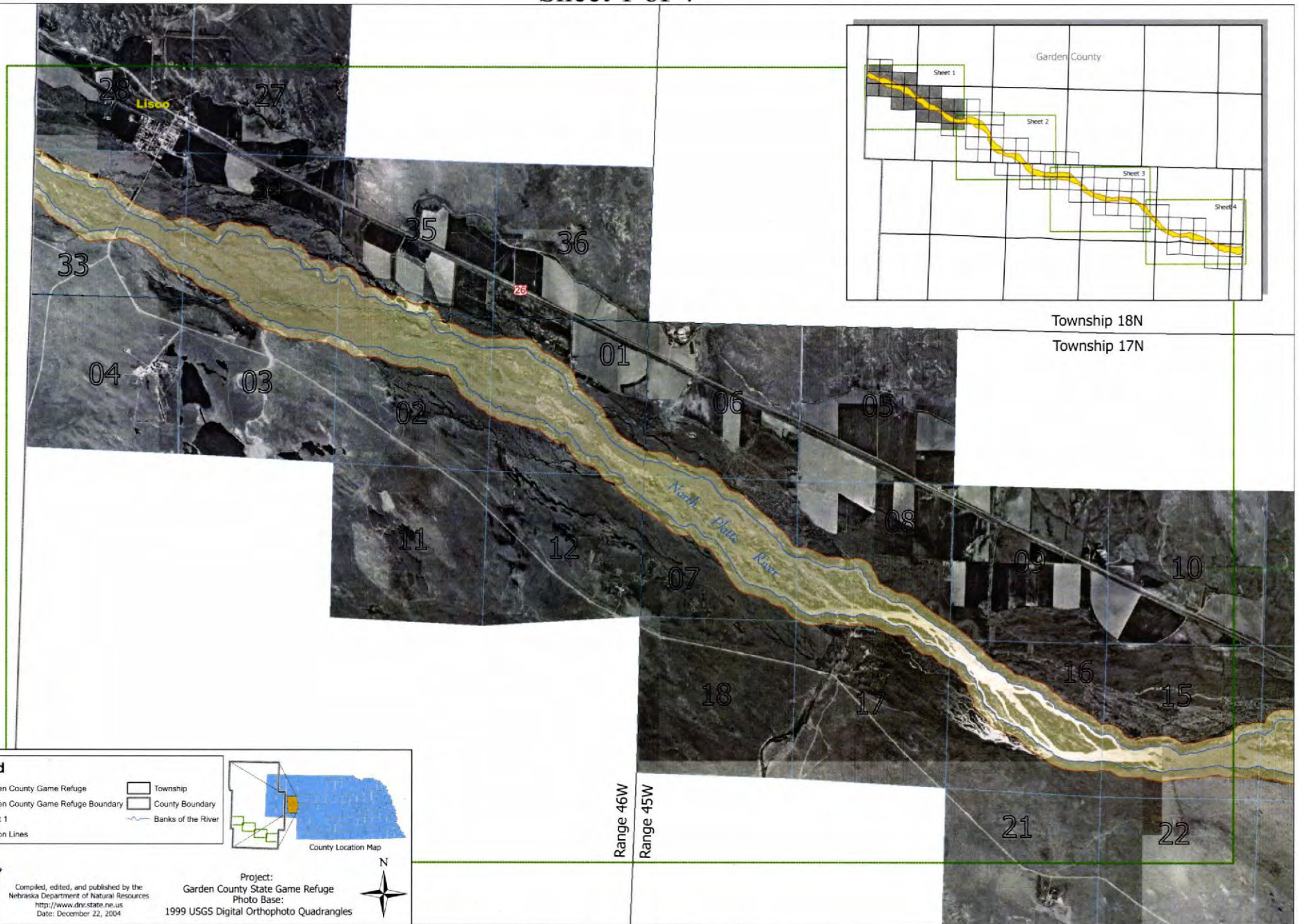
005. Boundary - Niobrara River Game Refuge. See *Neb. Rev. Stat.* § 37-706(2)(b).

006. Boundary - North Platte River Game Refuge. See *Neb. Rev. Stat.* § 37-706(2)(c).

007. State Game Refuge Maps. The attached maps depict the boundaries of the State Game Refuges.

GARDEN COUNTY STATE GAME REFUGE

Sheet 1 of 4



Legend

- Garden County Game Refuge
- Garden County Game Refuge Boundary
- Sheet 1
- Section Lines
- Township
- County Boundary
- Banks of the River



Compiled, edited, and published by the
Nebraska Department of Natural Resources
<http://www.dnr.state.ne.us>
Date: December 22, 2004

Project:
Garden County State Game Refuge
Photo Base:
1999 USGS Digital Orthophoto Quadrangles



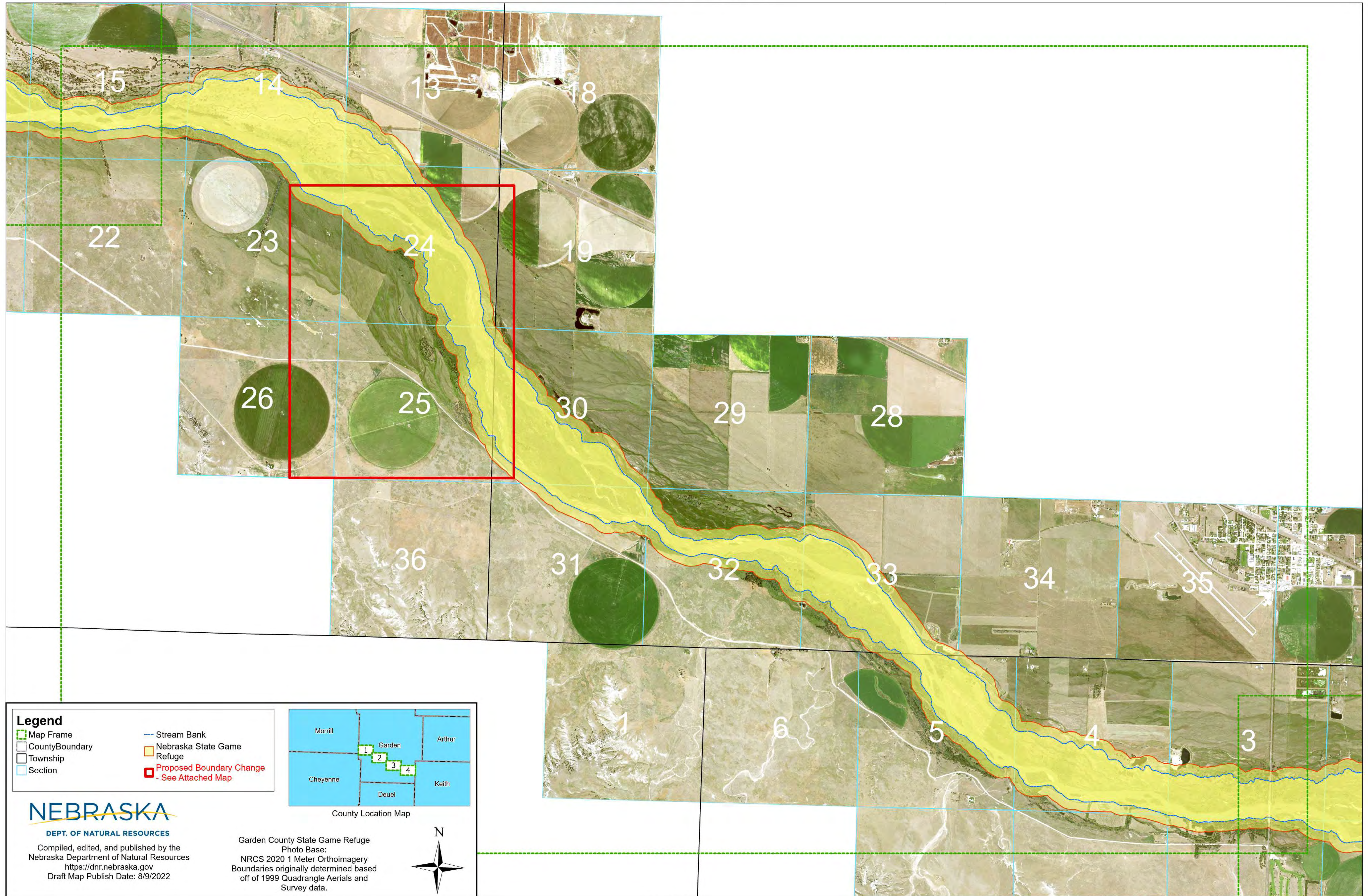
Scale: 1 : 12,000
0 1,250 2,500 5,000 7,500 10,000
Feet

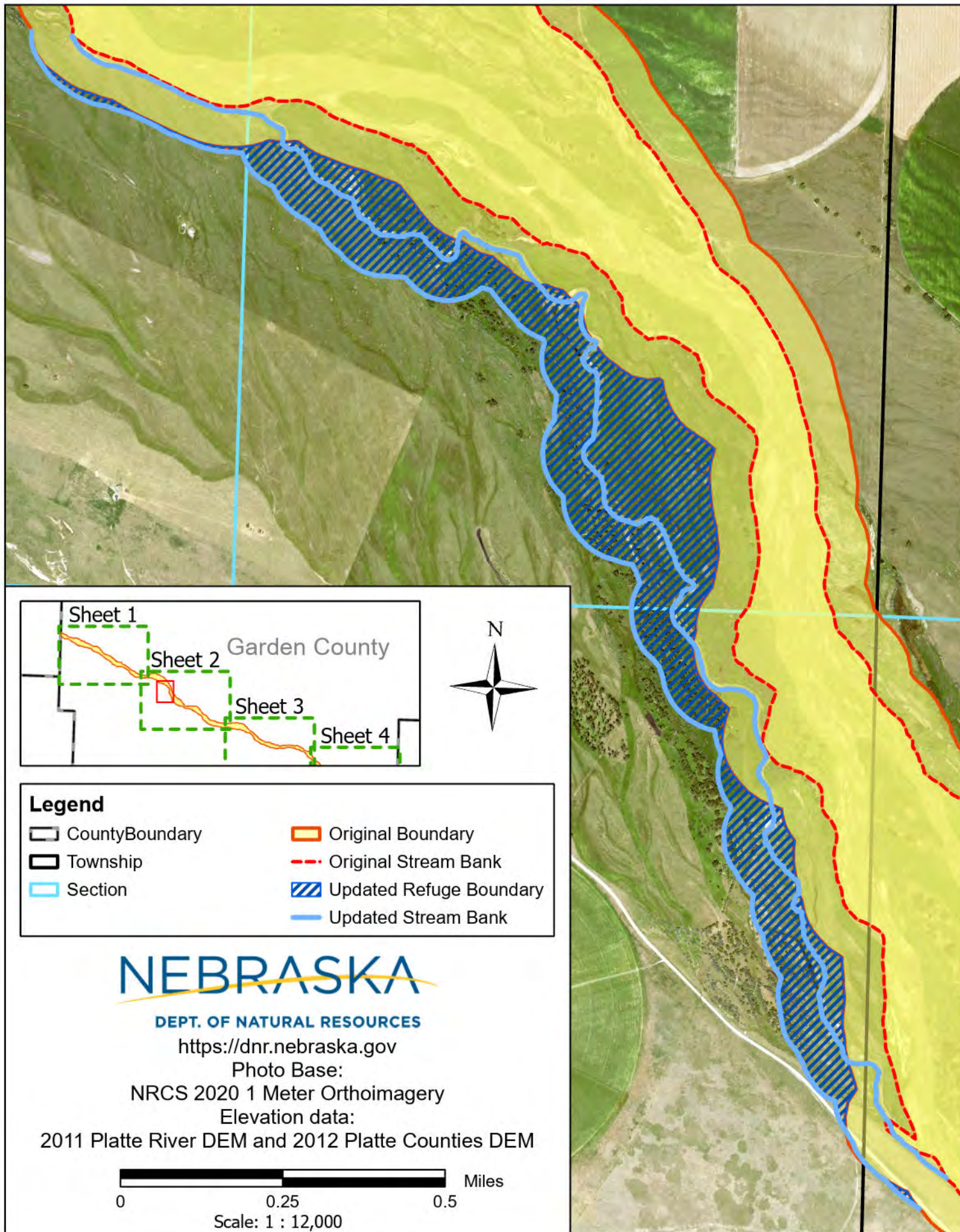
DRAFT

Garden County State Game Refuge

DRAFT

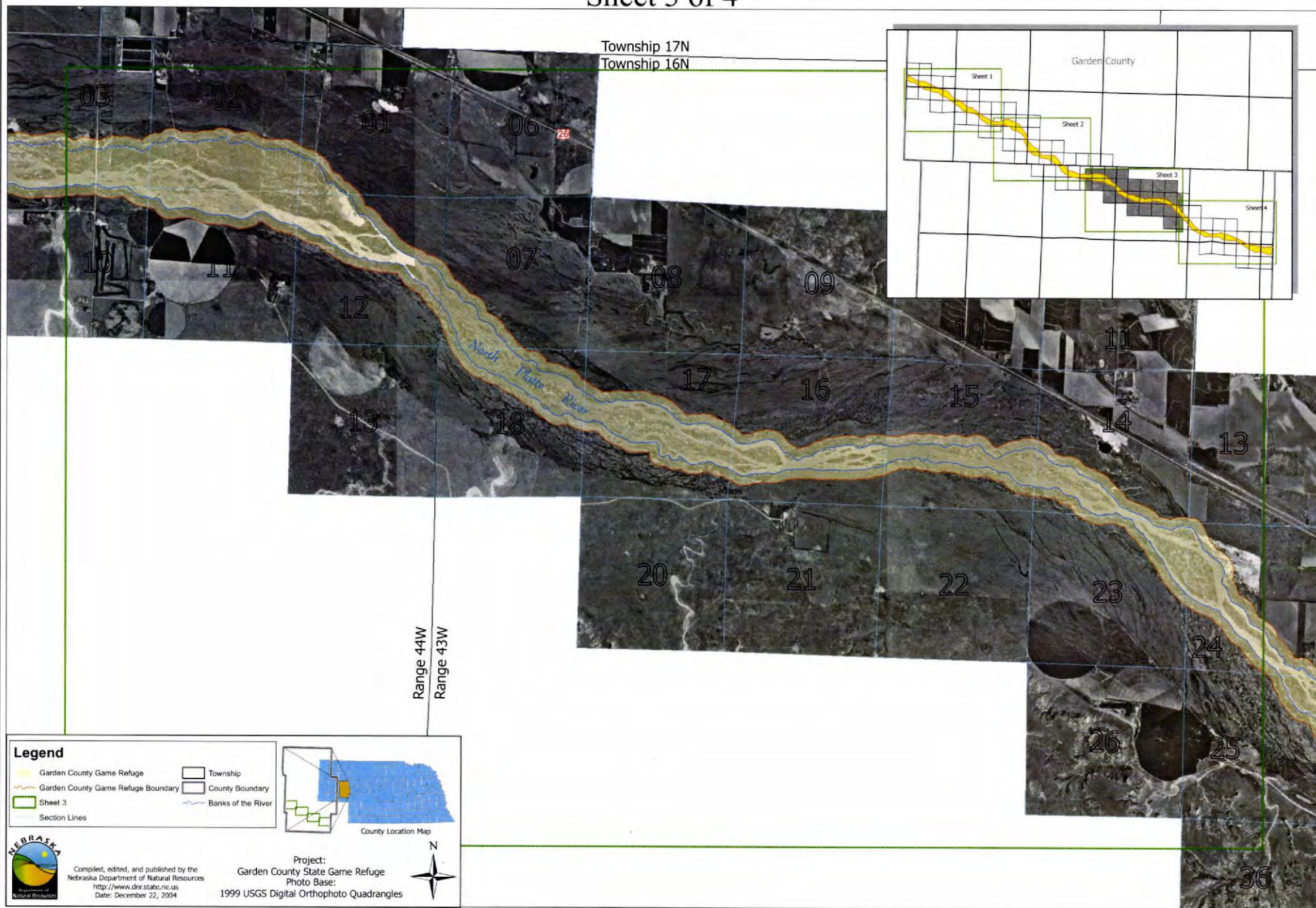
Sheet 2 of 4





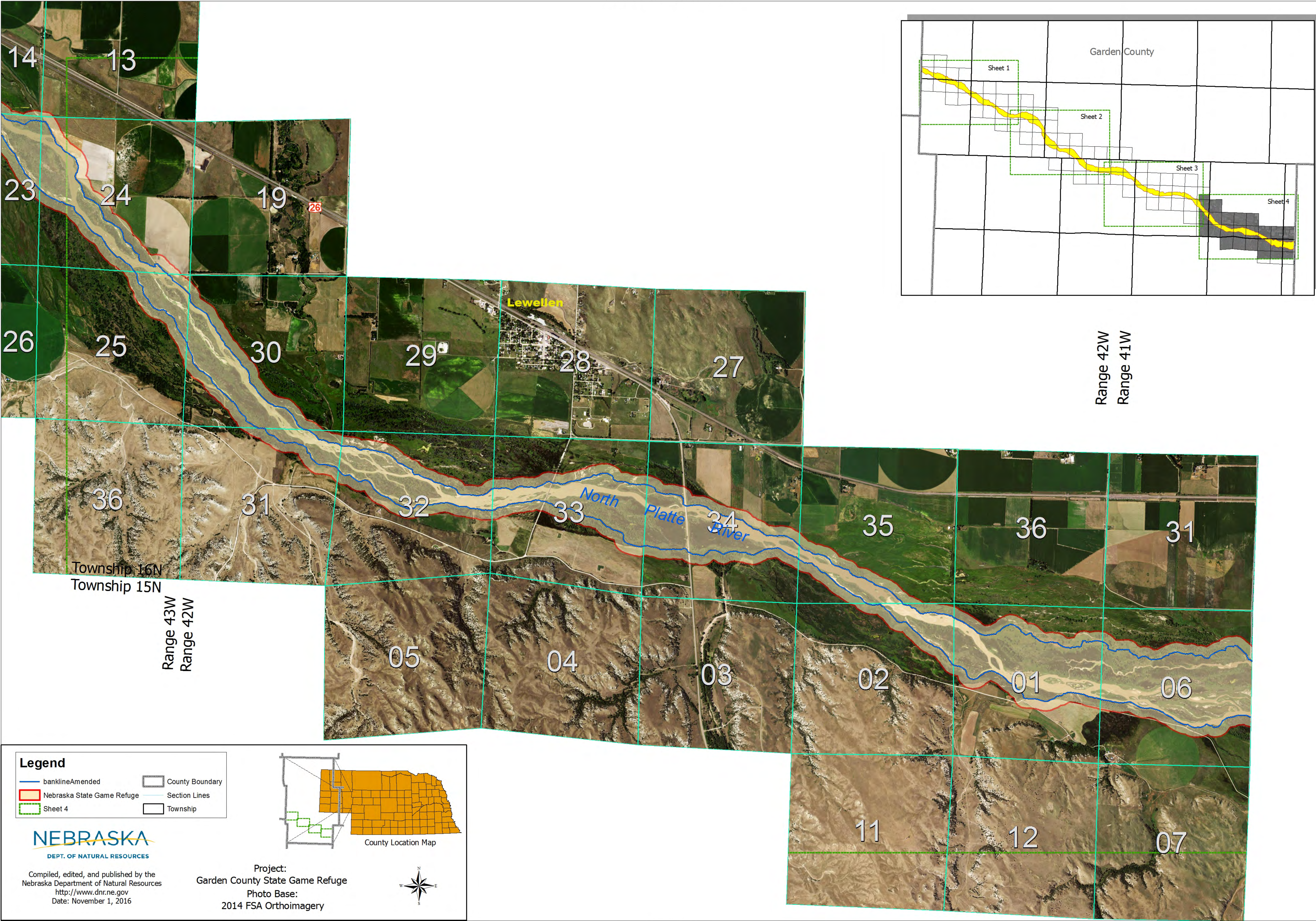
GARDEN COUNTY STATE GAME REFUGE

Sheet 3 of 4



GARDEN COUNTY STATE GAME REFUGE

Sheet 4 of 4



- Legend**
- banklineAmended
 - Nebraska State Game Refuge
 - Sheet 4
 - County Boundary
 - Section Lines
 - Township

NEBRASKA
DEPT. OF NATURAL RESOURCES

Compiled, edited, and published by the
Nebraska Department of Natural Resources
<http://www.dnr.ne.gov>
Date: November 1, 2016

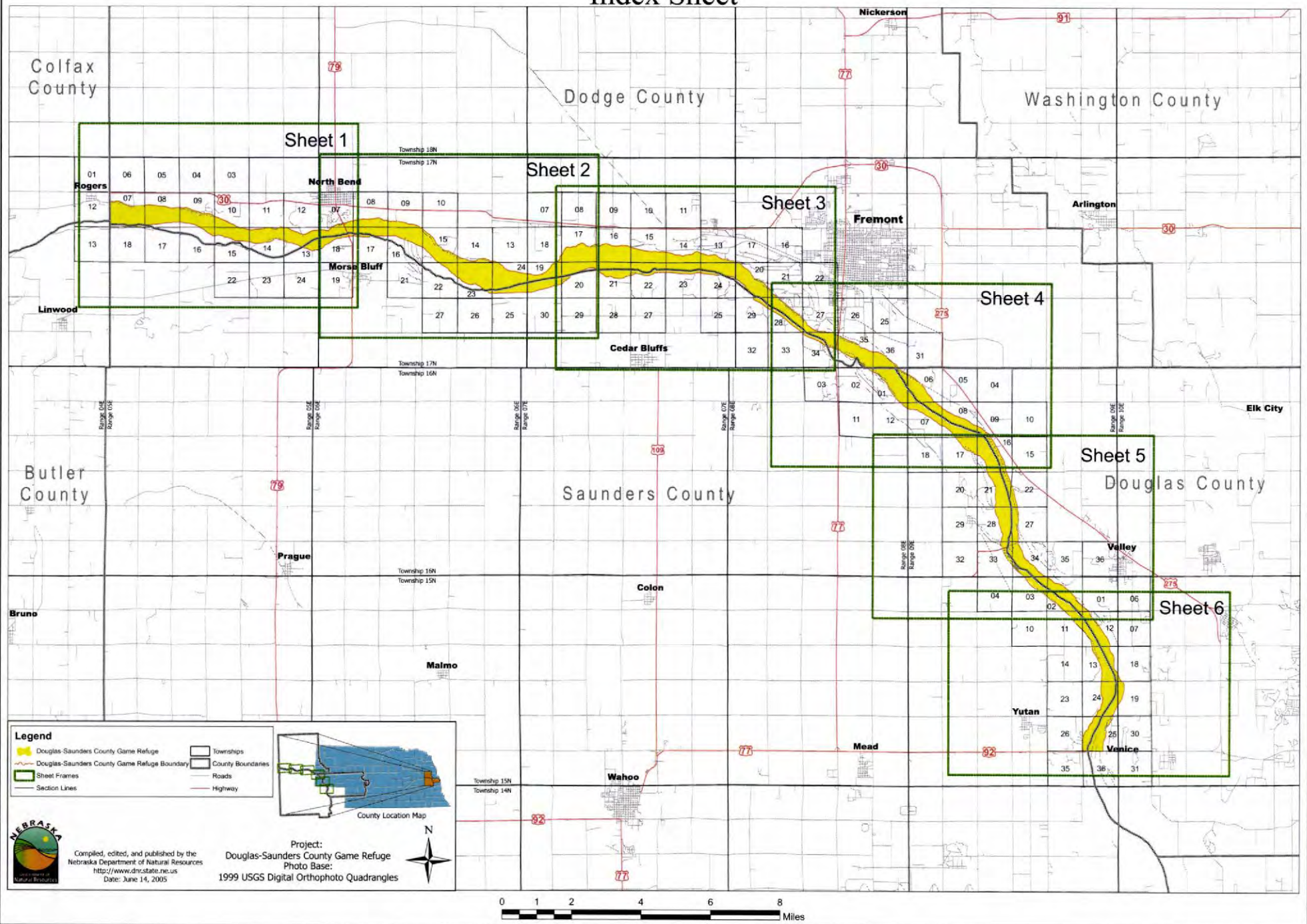
Project:
Garden County State Game Refuge
Photo Base:
2014 FSA Orthoimagery



Scale: 1 : 12,000
0 1,250 2,500 5,000 7,500 10,000
Feet

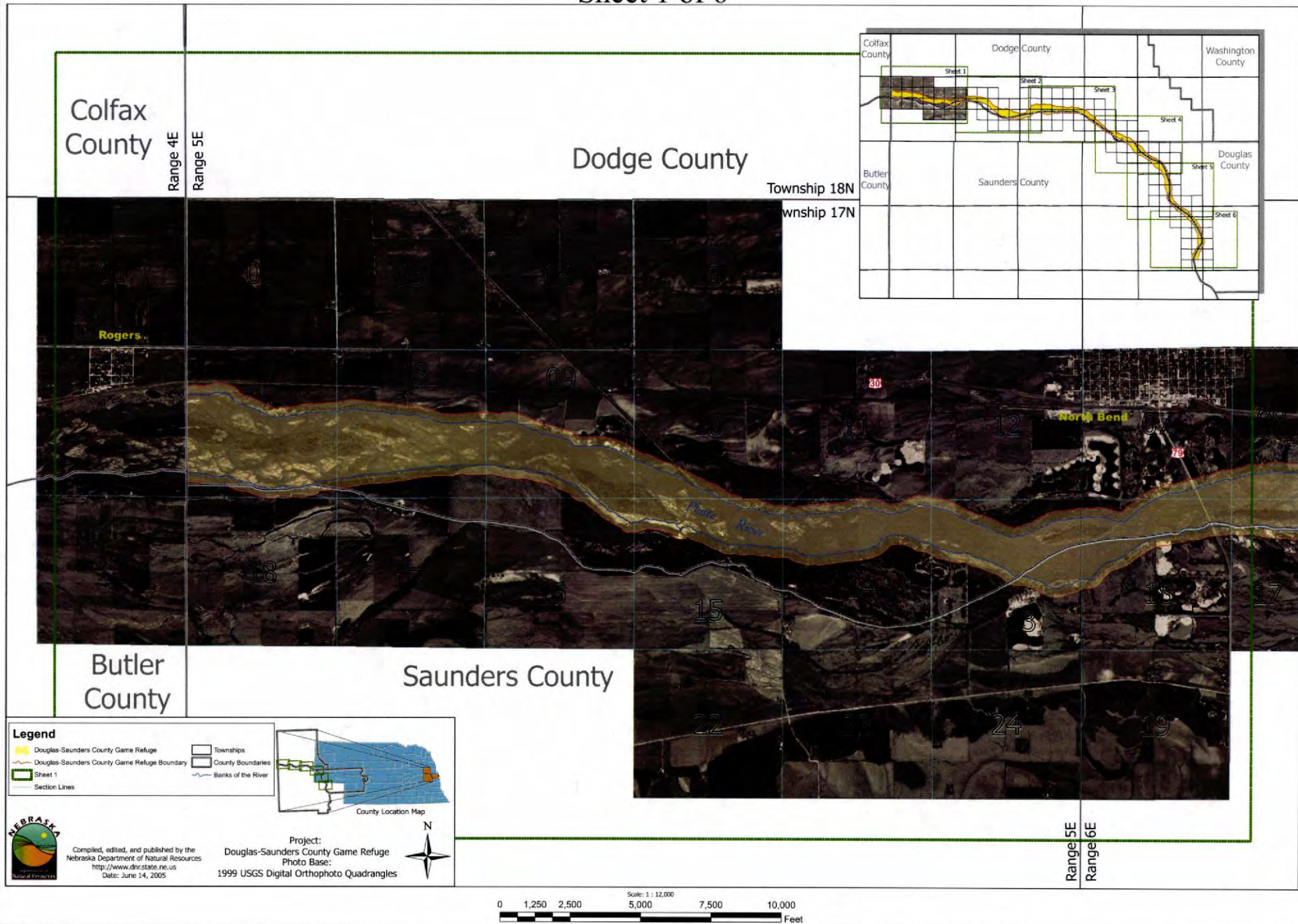
DOUGLAS-SAUNDERS COUNTY GAME REFUGE

Index Sheet



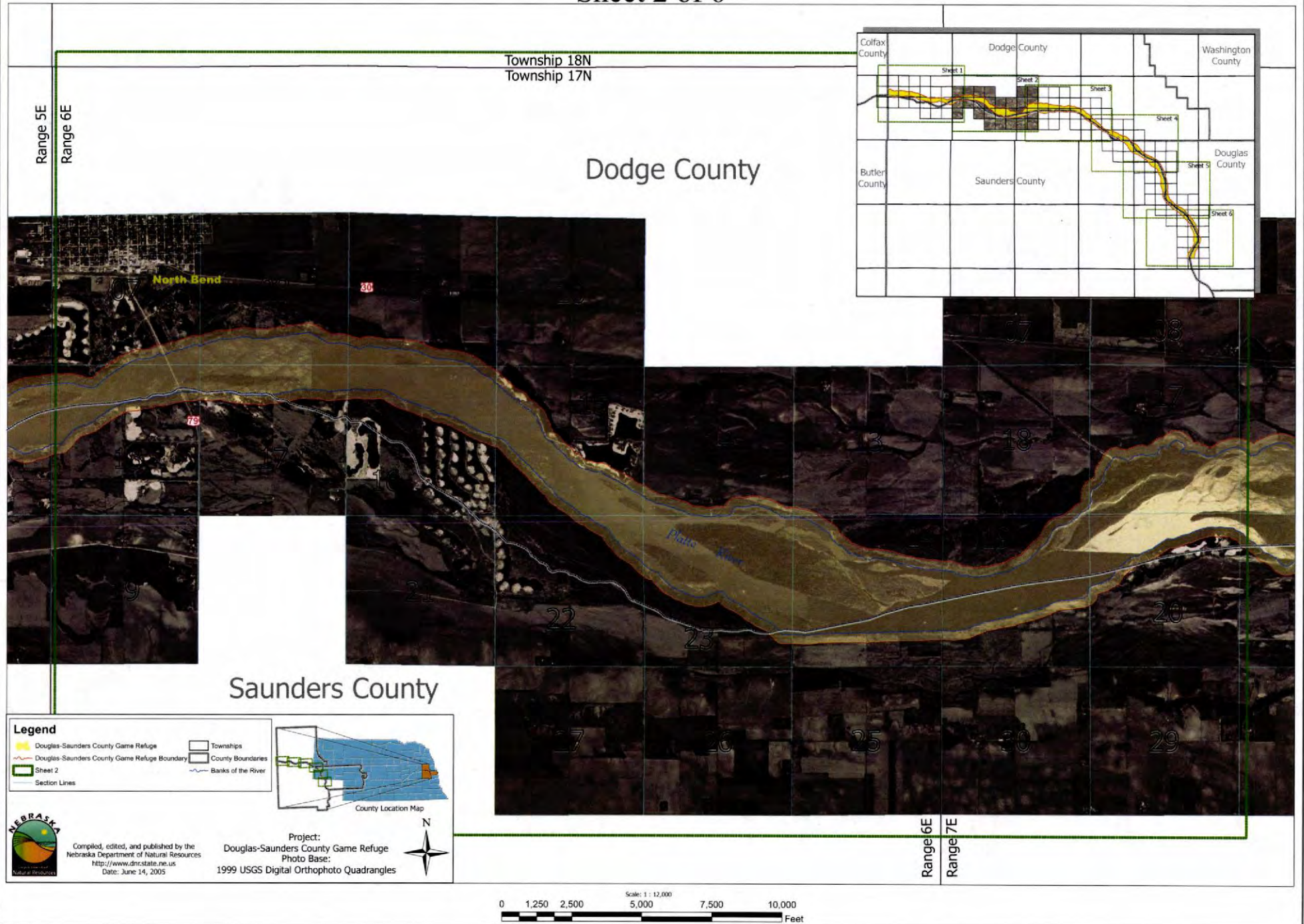
DOUGLAS-SAUNDERS COUNTY GAME REFUGE

Sheet 1 of 6



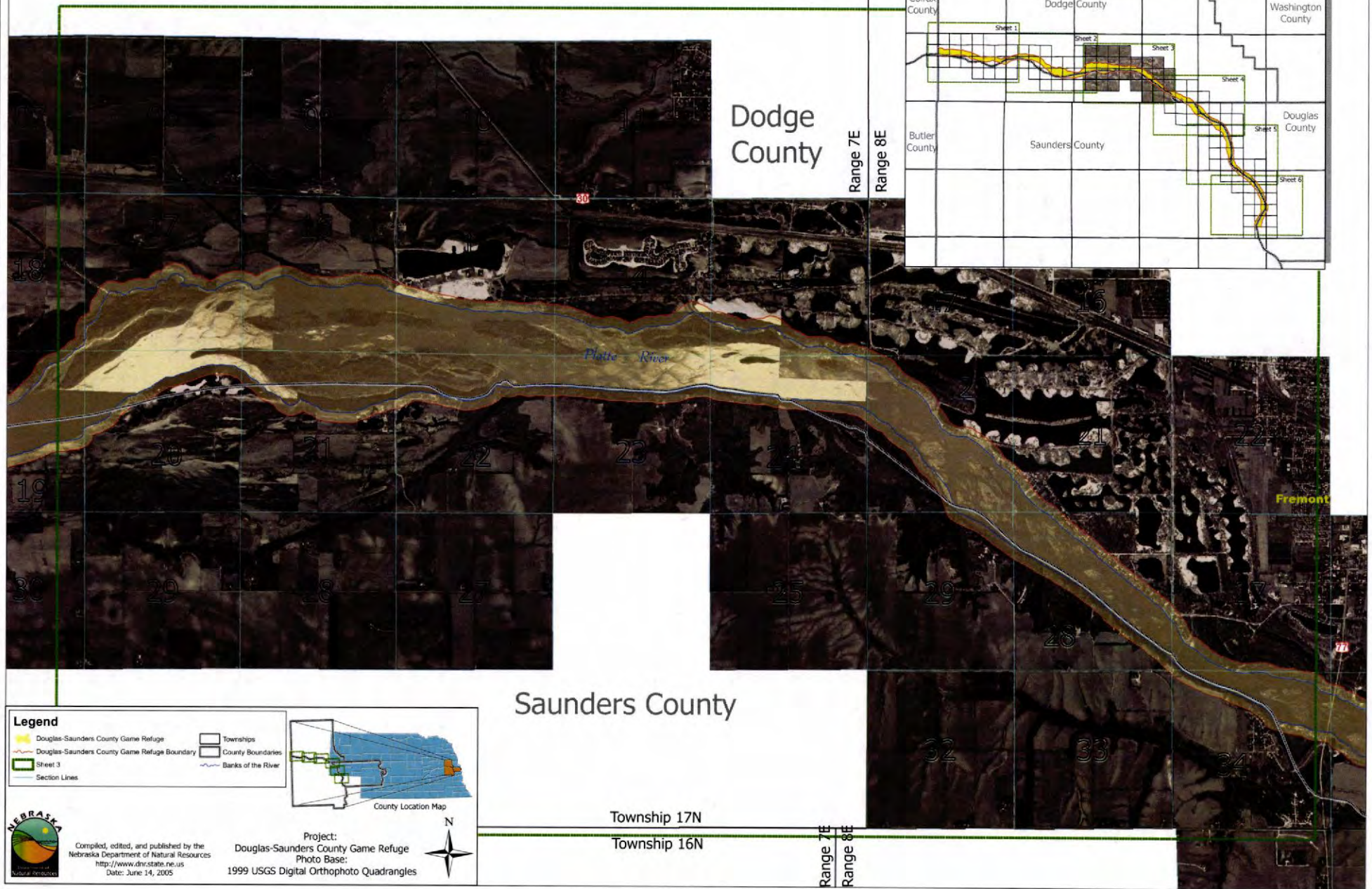
DOUGLAS-SAUNDERS COUNTY GAME REFUGE

Sheet 2 of 6



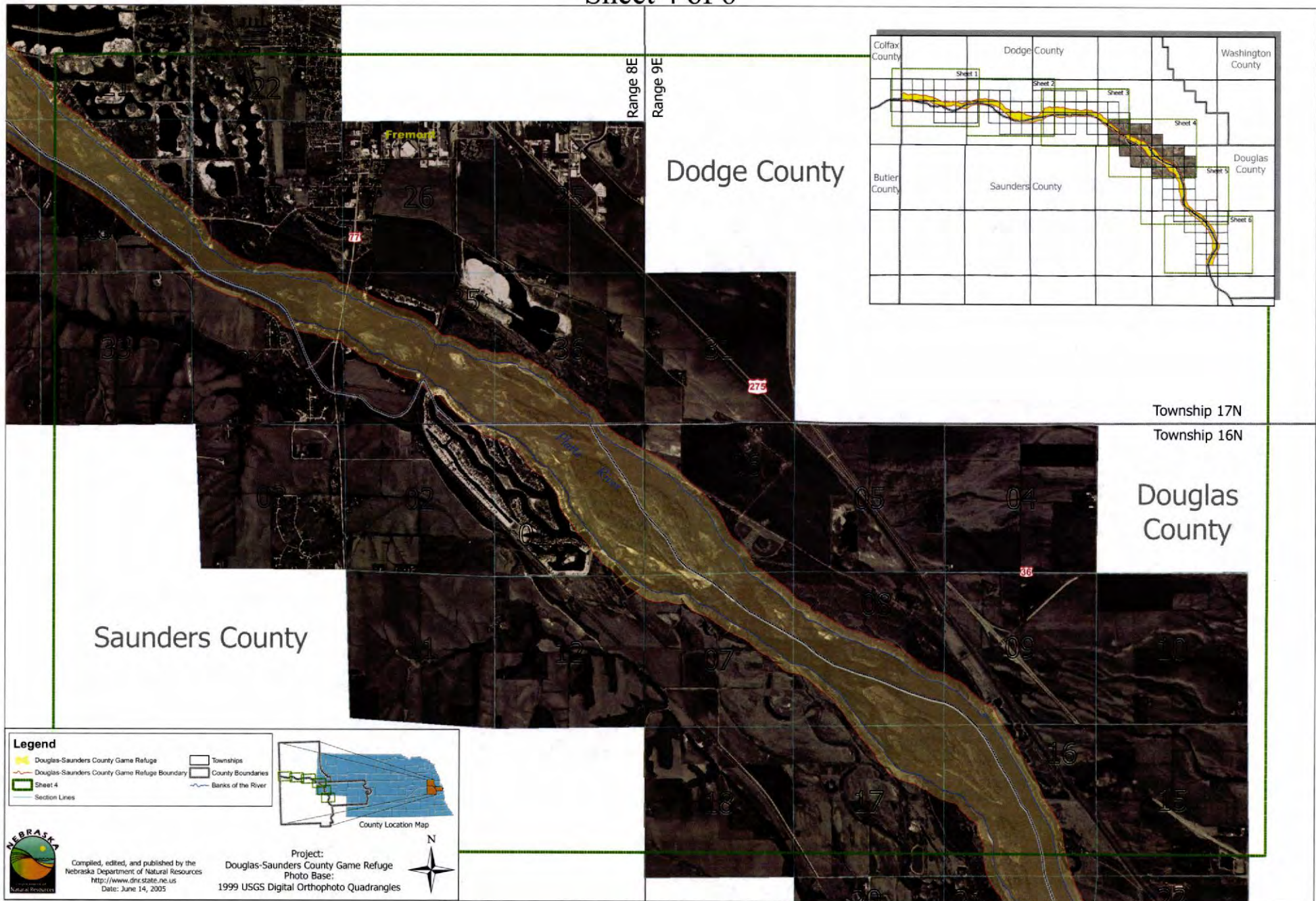
DOUGLAS-SAUNDERS COUNTY GAME REFUGE

Sheet 3 of 6



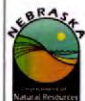
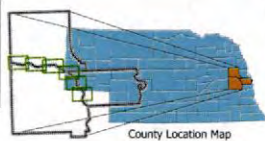
DOUGLAS-SAUNDERS COUNTY GAME REFUGE

Sheet 4 of 6



Legend

- Douglas-Saunders County Game Refuge
- Douglas-Saunders County Game Refuge Boundary
- Section Lines
- Townships
- County Boundaries
- Banks of the River



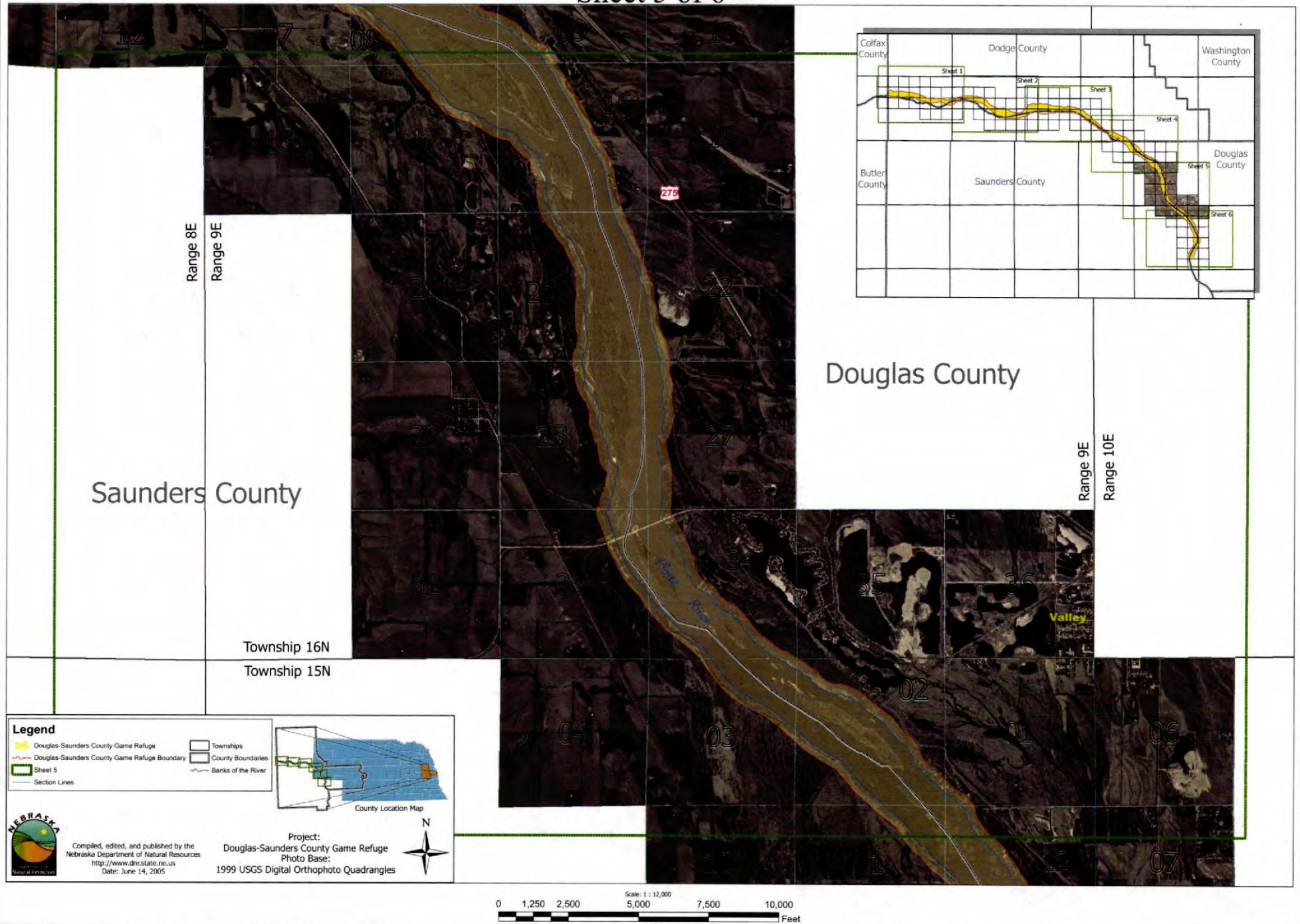
Compiled, edited, and published by the
Nebraska Department of Natural Resources
<http://www.dnr.state.ne.us>
Date: June 14, 2005

Project:
Douglas-Saunders County Game Refuge
Photo Base:
1999 USGS Digital Orthophoto Quadrangles

Scale: 1 : 12,000
0 1,250 2,500 5,000 7,500 10,000 Feet

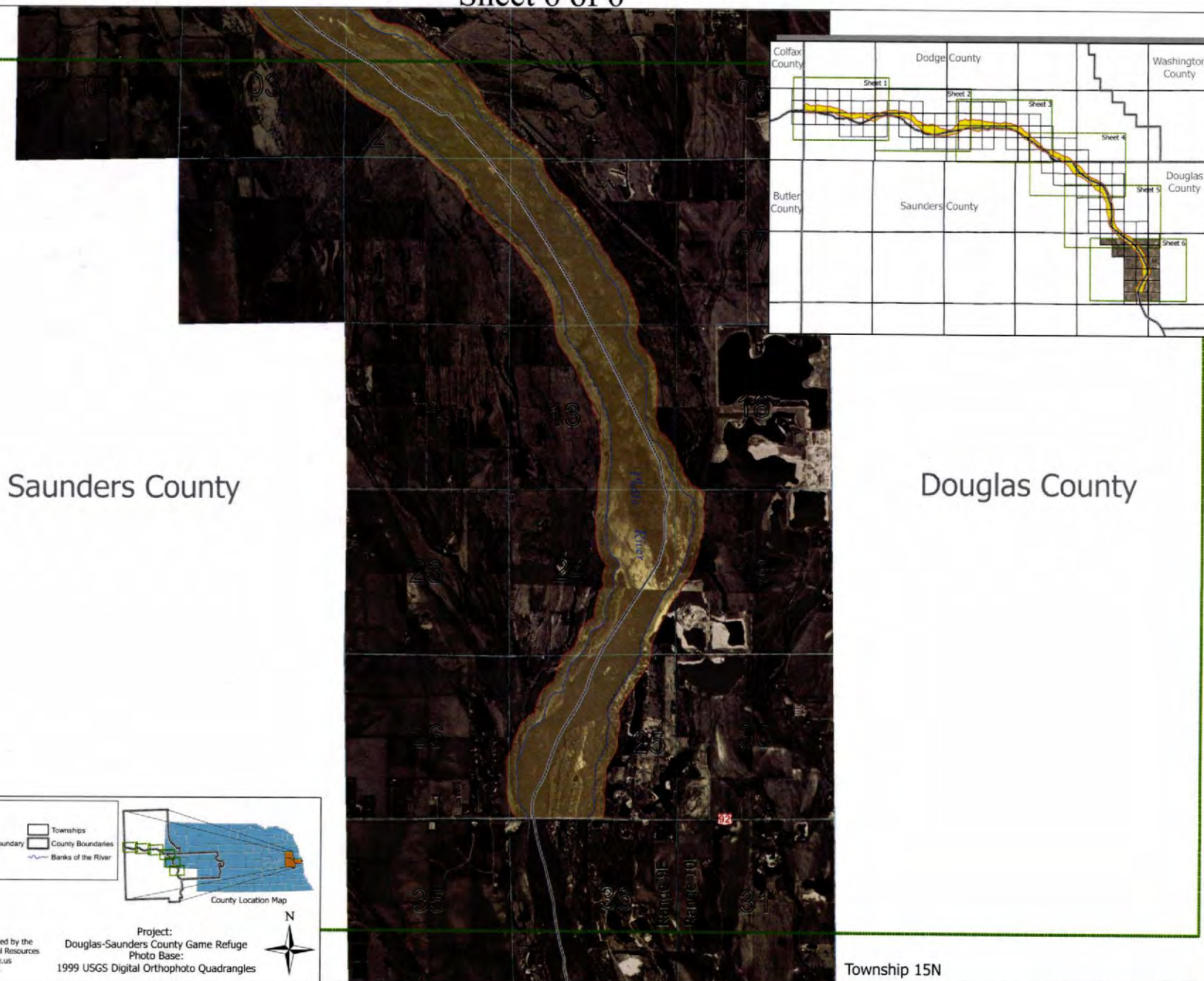
DOUGLAS-SAUNDERS COUNTY GAME REFUGE

Sheet 5 of 6



DOUGLAS-SAUNDERS COUNTY GAME REFUGE

Sheet 6 of 6



Legend

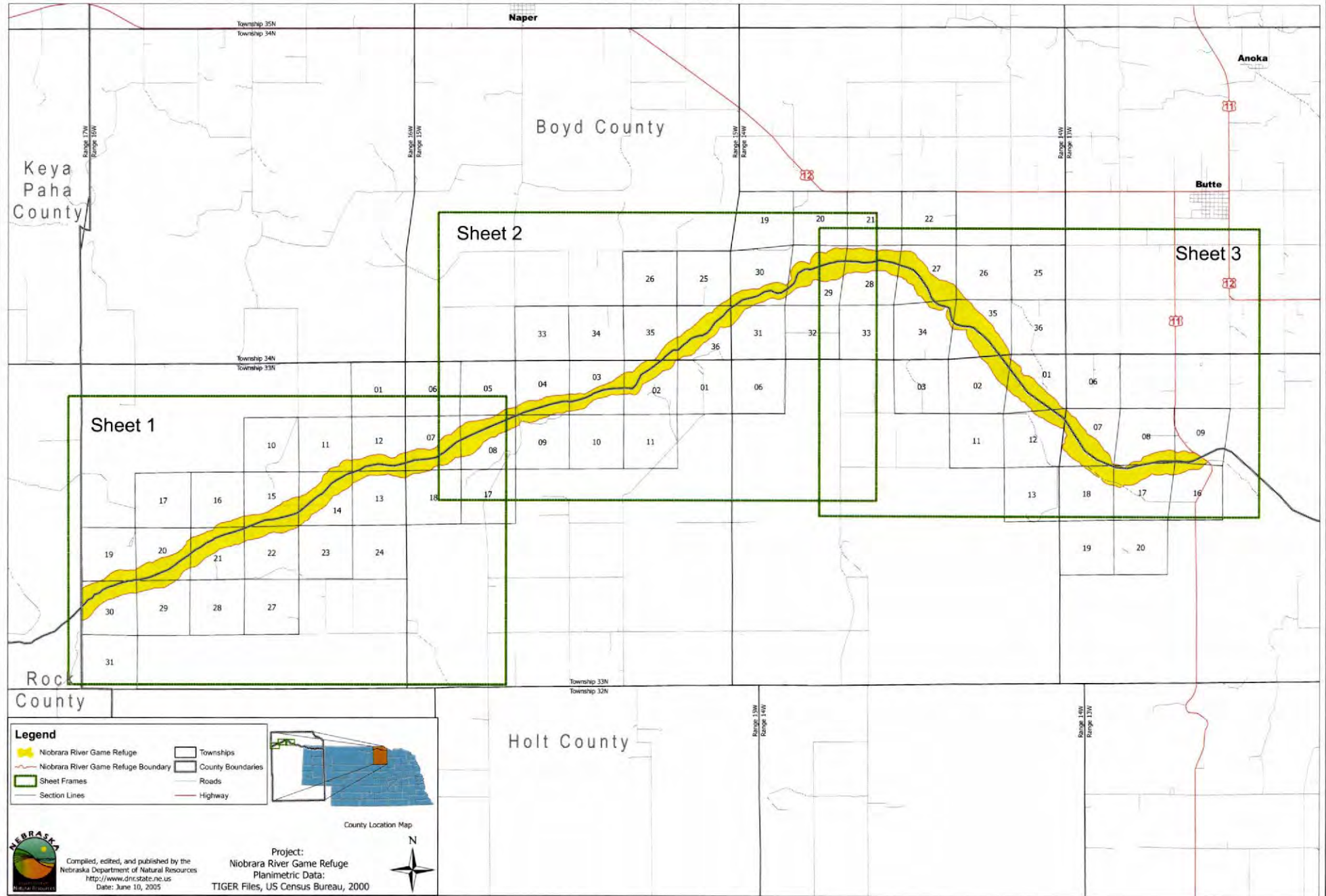
- Douglas-Saunders County Game Refuge
- Douglas-Saunders County Game Refuge Boundary
- Sheet 6
- Section Lines
- Townships
- County Boundaries
- Banks of the River



Compiled, edited, and published by the
Nebraska Department of Natural Resources
<http://www.dnr.state.ne.us>
Date: June 14, 2005

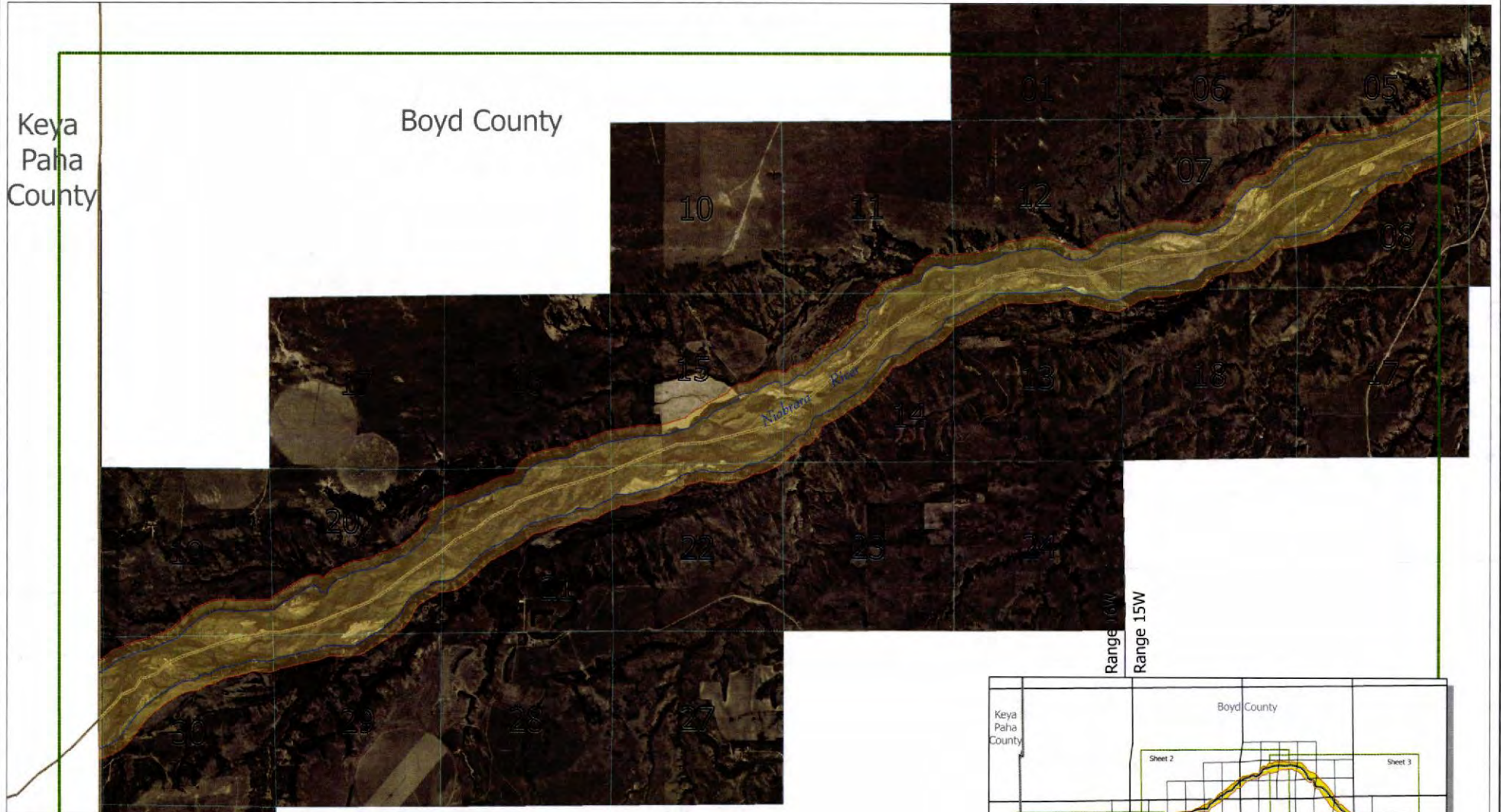
Project:
Douglas-Saunders County Game Refuge
Photo Base:
1999 USGS Digital Orthophoto Quadrangles

Scale: 1 : 12,000
0 1,250 2,500 5,000 7,500 10,000
Feet



NIOBRARA RIVER GAME REFUGE

Sheet 1 of 3



Legend

- Niobrara River Game Refuge
- Niobrara River Game Refuge Boundary
- Sheet 1
- Section Lines
- Townships
- County Boundaries
- Banks of the River



County Location Map



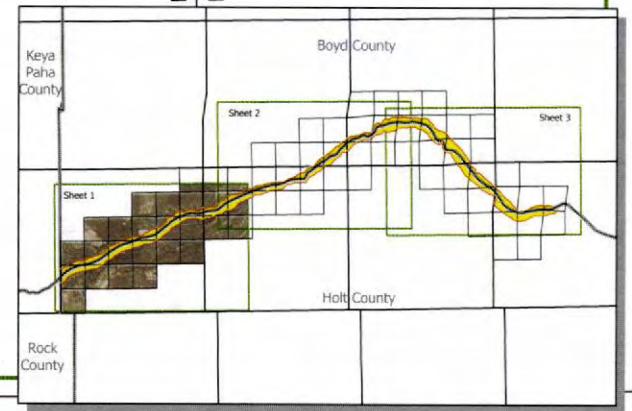
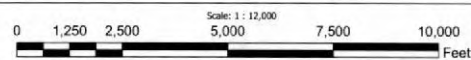
Compiled, edited, and published by the
Nebraska Department of Natural Resources
<http://www.dnr.state.ne.us>
Date: June 10, 2005

Project:
Niobrara River Game Refuge
Photo Base:
1999 USGS Digital Orthophoto Quadrangles

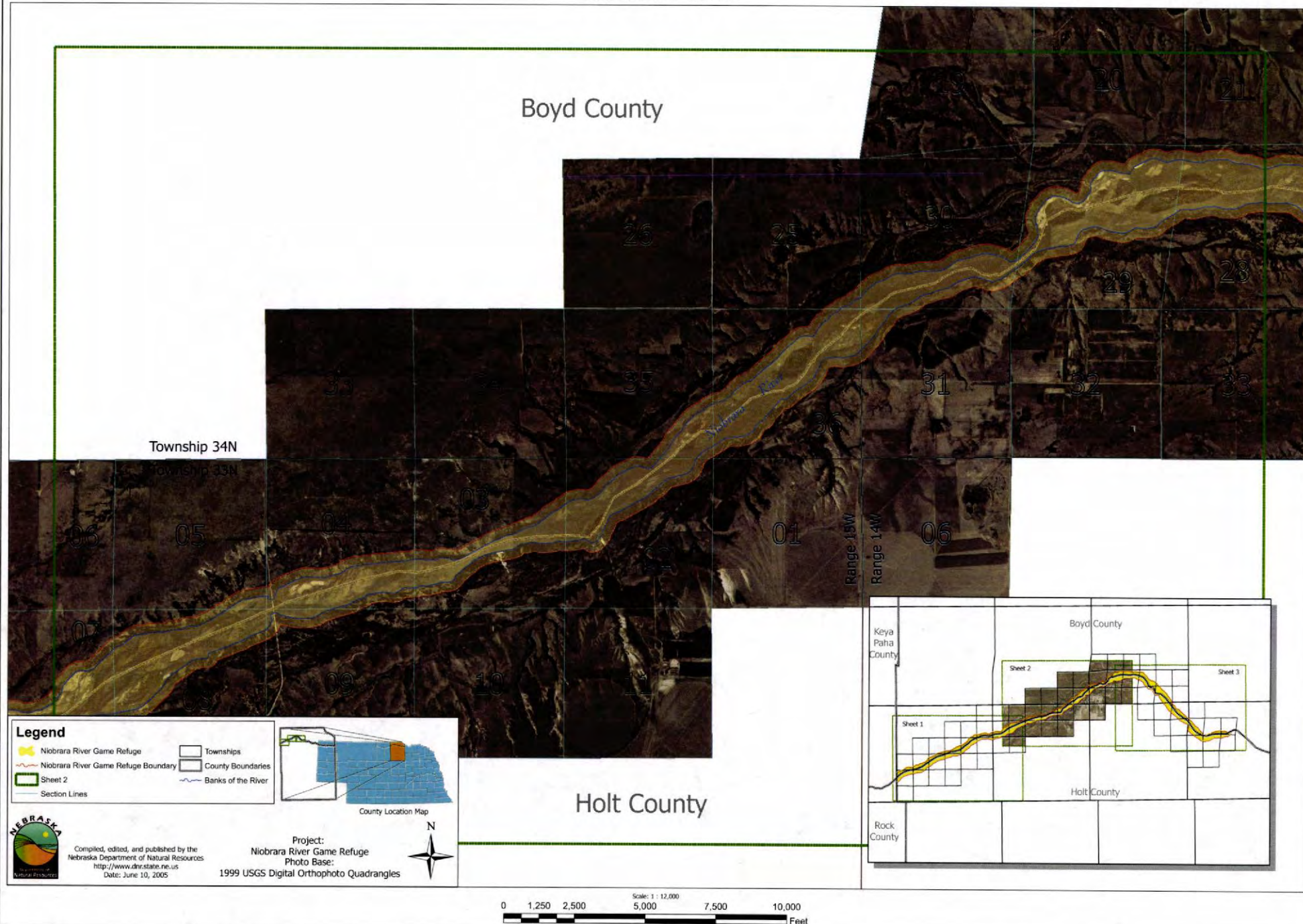


Holt County

Township 33N
Township 32N

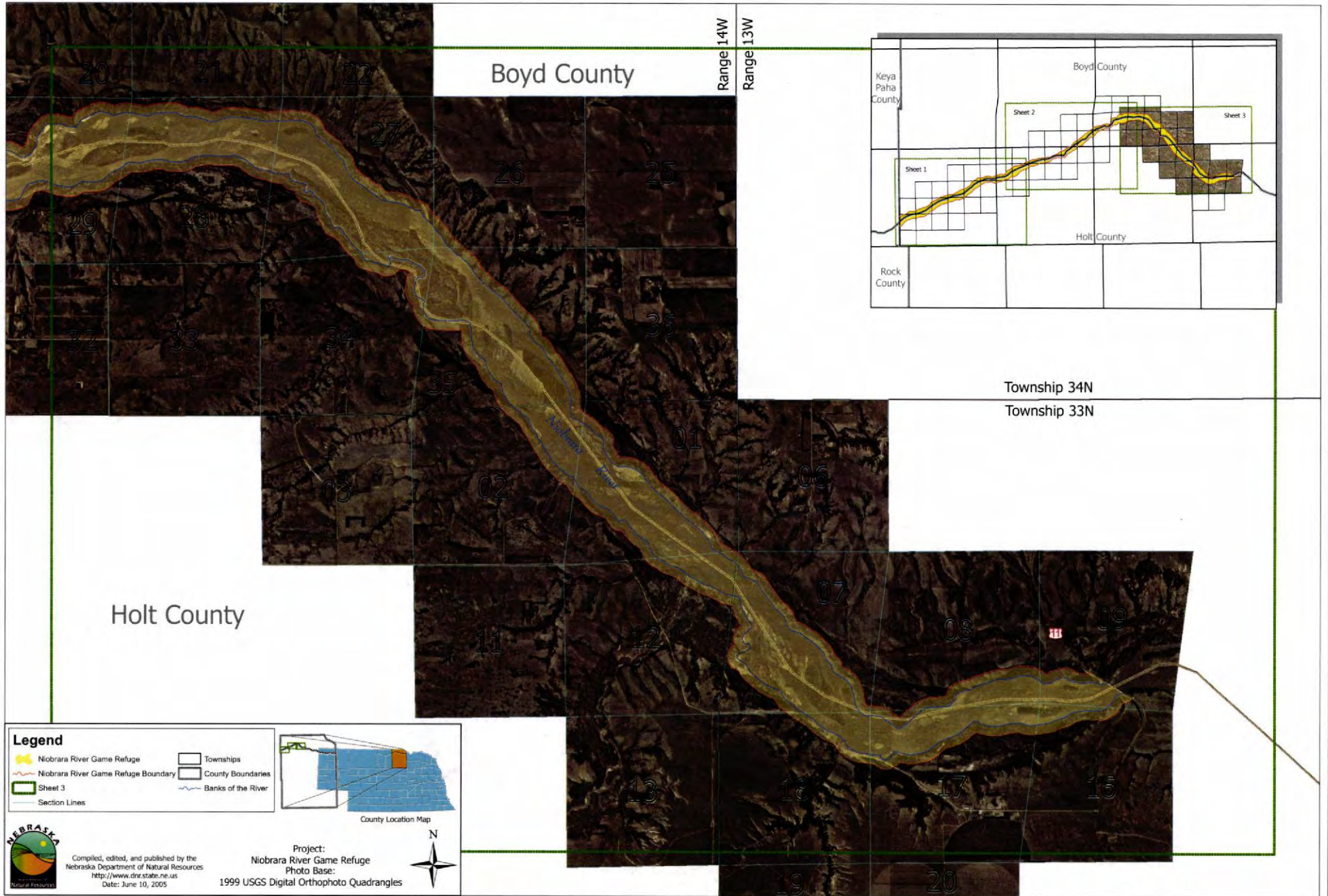


Sheet 2 of 3



NIOBRARA RIVER GAME REFUGE

Sheet 3 of 3



NORTH PLATTE RIVER GAME REFUGE

Sheet 1 of 1

Range 31W
Range 30W

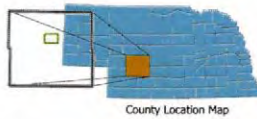
Range 30W
Range 29W



Township 14N
Township 13N

Legend

- North Platte Game Refuge
- North Platte Game Refuge Boundary
- View Extent
- Section Lines
- Townships
- Banks of the River



Compiled, edited, and published by the
Nebraska Department of Natural Resources
<http://www.dnr.state.ne.us>
Date: June 8, 2005

Project:
North Platte River Game Refuge
Photo Base:
1999 USGS Digital Orthophoto Quadrangles



0 1,250 2,500 5,000 7,500 10,000
Feet