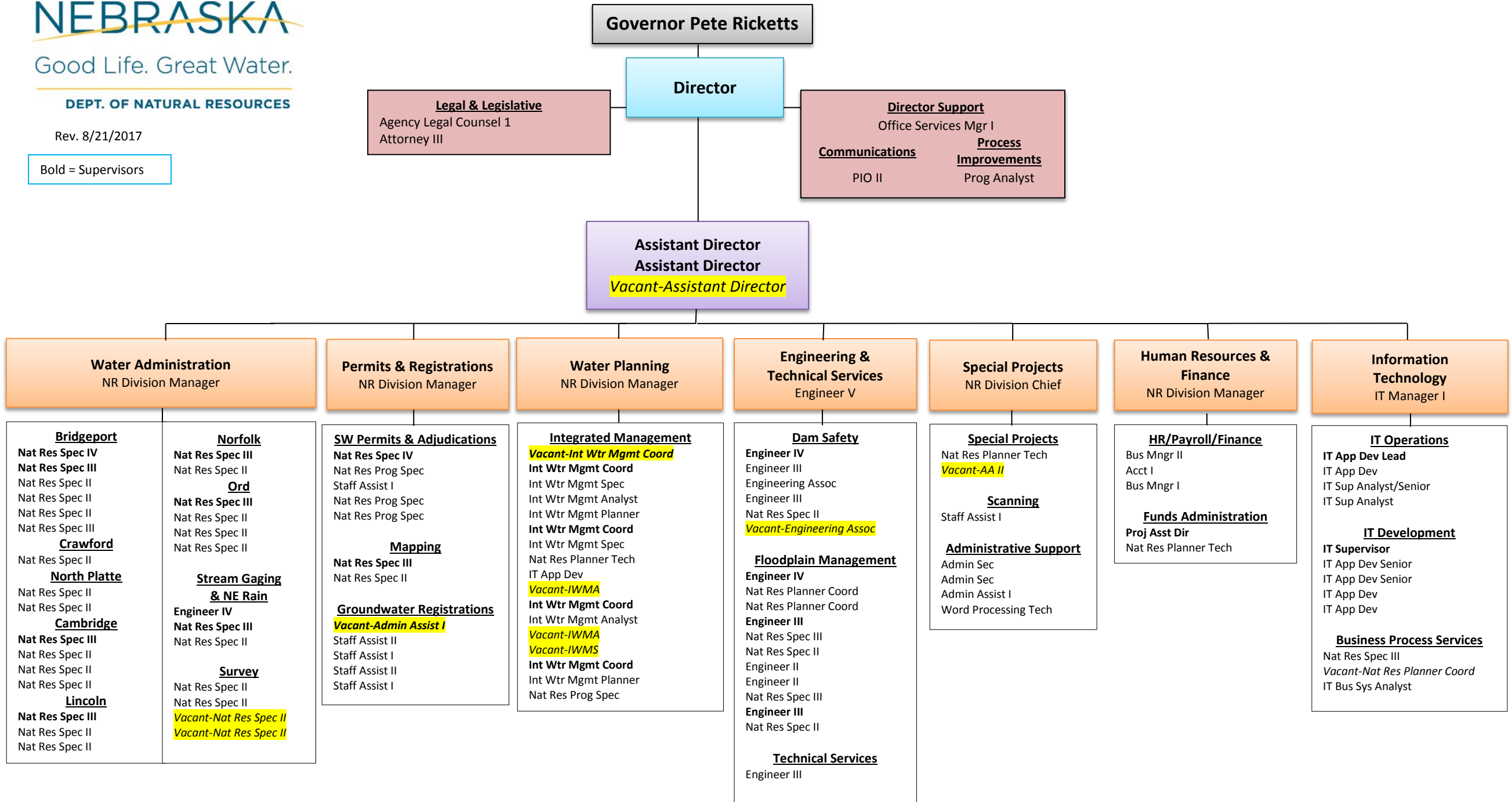


Bold = Supervisors



Water Administration
NR Division Manager

- Bridgeport**
Nat Res Spec IV
Nat Res Spec III
Nat Res Spec II
Nat Res Spec II
Nat Res Spec II
Nat Res Spec III
- Crawford**
Nat Res Spec II
- North Platte**
Nat Res Spec II
Nat Res Spec II
- Cambridge**
Nat Res Spec III
Nat Res Spec II
Nat Res Spec II
Nat Res Spec II
- Lincoln**
Nat Res Spec III
Nat Res Spec II
Nat Res Spec II
- Norfolk**
Nat Res Spec III
Nat Res Spec II
- Ord**
Nat Res Spec III
Nat Res Spec II
Nat Res Spec II
- Stream Gaging & NE Rain**
Engineer IV
Nat Res Spec III
Nat Res Spec II
- Survey**
Nat Res Spec II
Nat Res Spec II
- Vacant-Nat Res Spec II**
Vacant-Nat Res Spec II

Permits & Registrations
NR Division Manager

- SW Permits & Adjudications**
Nat Res Spec IV
Nat Res Prog Spec
Staff Assist I
Nat Res Prog Spec
Nat Res Prog Spec
- Mapping**
Nat Res Spec III
Nat Res Spec II
- Groundwater Registrations**
Vacant-Admin Assist I
Staff Assist II
Staff Assist I
Staff Assist II
Staff Assist I

Water Planning
NR Division Manager

- Integrated Management**
Vacant-Int Wtr Mgmt Coord
Int Wtr Mgmt Coord
Int Wtr Mgmt Spec
Int Wtr Mgmt Analyst
Int Wtr Mgmt Planner
Int Wtr Mgmt Coord
Int Wtr Mgmt Spec
Nat Res Planner Tech
IT App Dev
Vacant-IWMA
Int Wtr Mgmt Coord
Int Wtr Mgmt Analyst
Vacant-IWMA
Vacant-IWMS
Int Wtr Mgmt Coord
Int Wtr Mgmt Planner
Nat Res Prog Spec

Engineering & Technical Services
Engineer V

- Dam Safety**
Engineer IV
Engineer III
Engineering Assoc
Engineer III
Nat Res Spec II
Vacant-Engineering Assoc
- Floodplain Management**
Engineer IV
Nat Res Planner Coord
Nat Res Planner Coord
Engineer III
Nat Res Spec III
Nat Res Spec II
Engineer II
Engineer II
Nat Res Spec III
Engineer III
Nat Res Spec II
- Technical Services**
Engineer III

Special Projects
NR Division Chief

- Special Projects**
Nat Res Planner Tech
Vacant-AA II
- Scanning**
Staff Assist I
- Administrative Support**
Admin Sec
Admin Sec
Admin Assist I
Word Processing Tech

Human Resources & Finance
NR Division Manager

- HR/Payroll/Finance**
Bus Mngr II
Acct I
Bus Mngr I
- Funds Administration**
Proj Asst Dir
Nat Res Planner Tech

Information Technology
IT Manager I

- IT Operations**
IT App Dev Lead
IT App Dev
IT Sup Analyst/Senior
IT Sup Analyst
- IT Development**
IT Supervisor
IT App Dev Senior
IT App Dev Senior
IT App Dev
IT App Dev
- Business Process Services**
Nat Res Spec III
Vacant-Nat Res Planner Coord
IT Bus Sys Analyst