



UPPER PLATTE BASIN-WIDE PLAN & TPNRD INTEGRATED MANAGEMENT PLAN

Pre-Hearing Information Session

July 16, 2019



HOW DID WE GET HERE?

Statutory Authority

Platte Overappropriated Area Basin-Wide Plan STATUTORY REQUIREMENTS § 46-715(2)(a)

Integrated Management Plan and Basin-Wide Plan

The plan shall include, "Clear goals and objectives with a purpose of sustaining a balance between water uses and water supplies so that the economic viability, social and environmental health, safety, and welfare of the basin can be achieved and maintained for both the near term and the long term."

BASIN-WIDE & INTEGRATED MANAGEMENT PLANS

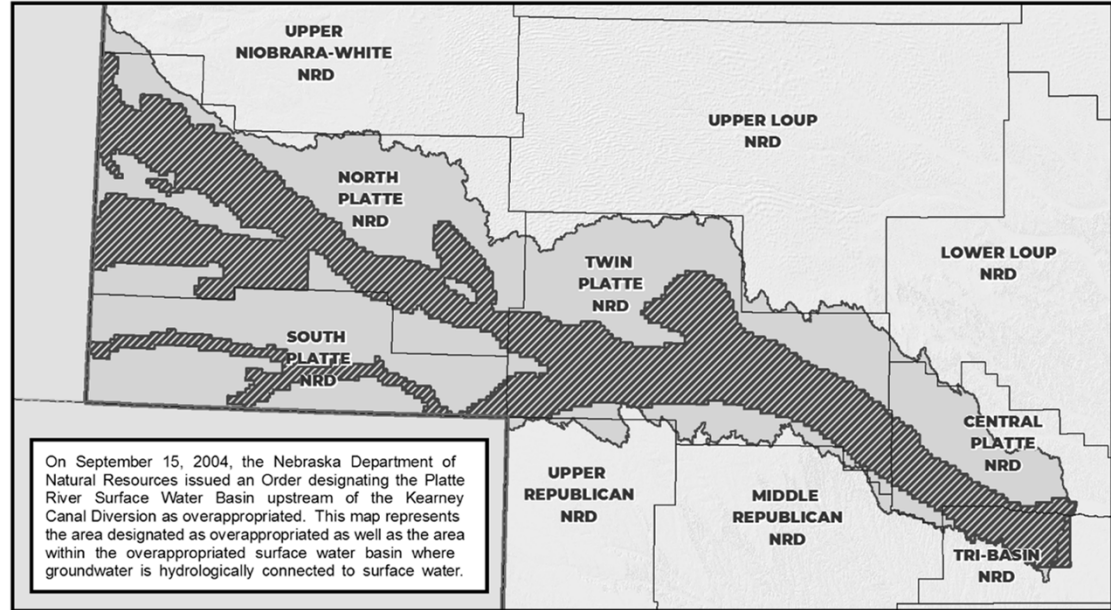
Basin-Wide Plan

- All basin NRDs & NeDNR
- Overappropriated Area
- Goals & objectives
 - Focused on regional, cross-boundary issues and opportunities
 - Consistency and collaboration among basin NRDs
 - A broad framework

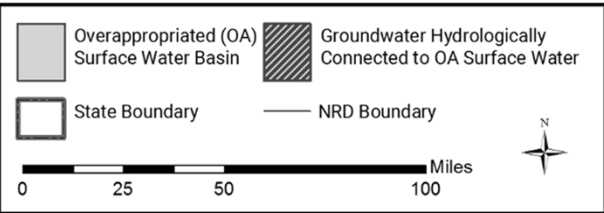
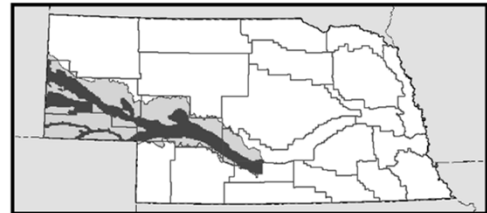
Integrated Management Plan

- 1 NRD & NeDNR
- Overappropriated and fully appropriated areas
- Goals, objectives, & controls
 - Specific to one NRD
 - Tailored to local issues and opportunities
 - Specific targets and actions
- Required to include:
 - Map of area subject to IMP
 - Groundwater & surface water control
 - Monitoring plan

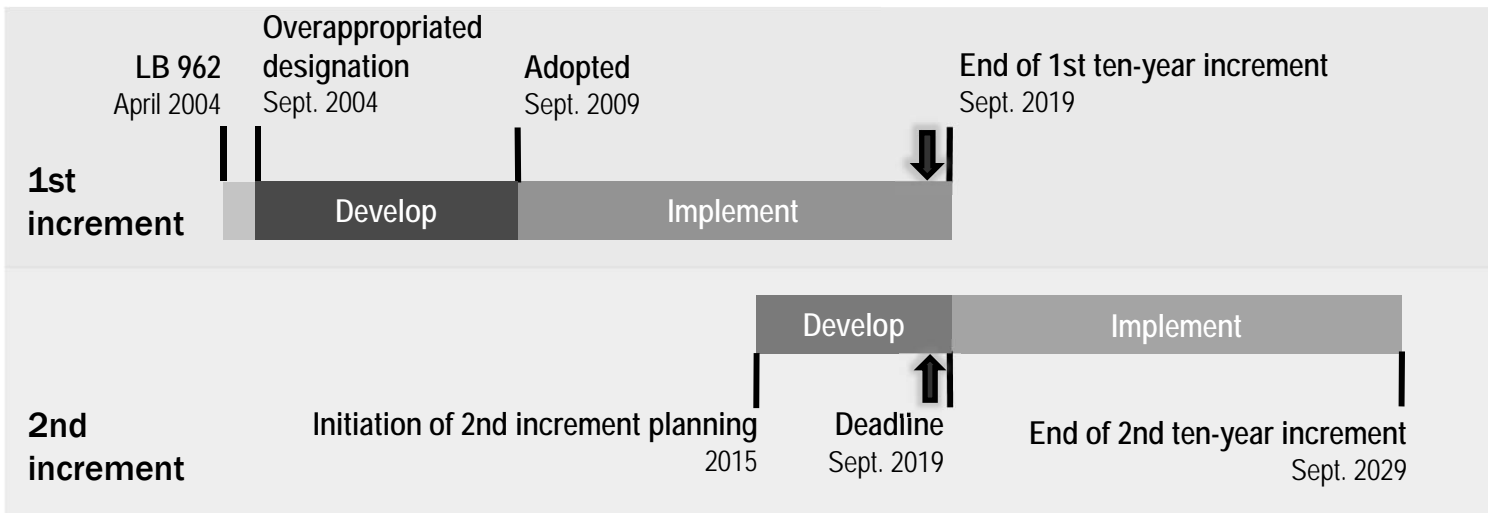
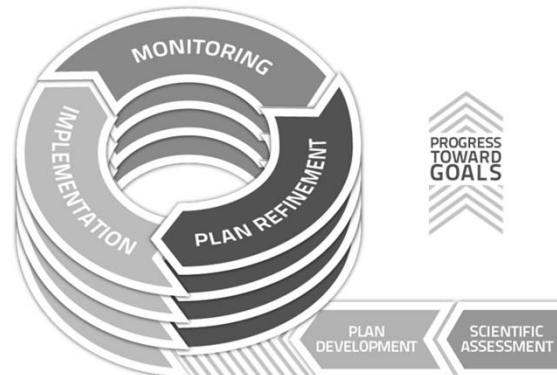
Upper Platte Basin-Wide Planning Area



On September 15, 2004, the Nebraska Department of Natural Resources issued an Order designating the Platte River Surface Water Basin upstream of the Kearney Canal Diversion as overappropriated. This map represents the area designated as overappropriated as well as the area within the overappropriated surface water basin where groundwater is hydrologically connected to surface water.



Plans are collaborative, incremental, and adaptive





PROPOSED UPPER PLATTE BASIN-WIDE PLAN

Goals & Objectives

Goal 1: Incrementally achieve and sustain a fully appropriated condition, while maintaining economic viability, social and environment health, safety, and welfare of the basin

Objective 1.1 Maintain previous increment mitigation progress

Objective 1.2 Offset impacts of streamflow depletion to (A) surface water appropriations and (B) water wells constructed in aquifers dependent on recharge from streamflow to the extent those depletions are due to water use initiated after July 1, 1997

Objective 1.3 Make progress toward a fully appropriated condition

Objective 1.4 Conduct technical analyses to support and evaluate effectiveness of plan and adequacy in sustaining progress toward a fully appropriated level of water use

Objective 1.5 Use available funds and actively pursue new funding opportunities to offset depletions, as well as to develop, maintain and update data and analytical tools needed to implement this plan

Objective 1.6 Update and continue implementing IMPs in each Platte River Basin NRD

Goal 1: Incrementally achieve and sustain a fully appropriated condition, while maintaining economic viability, social and environment health, safety, and welfare of the basin

Objective 1.3 Make progress toward a fully appropriated condition

- 1.3.1: Understand the economic impacts of supply variability on water users
- 1.3.2: Assess short- and long- term basin water supply and demand
- 1.3.3: Explore and implement potential measures to mitigate impacts (hydrologic and economic) of basin supply variability due to human-made depletions on surface water and groundwater users
- 1.3.4: Develop a basin drought contingency plan for management of supplies during times of shortage

Goal 2: Prevent or mitigate human-induced reductions in the flow of a river or stream that would cause non-compliance with an interstate compact or decree or other formal state contract or agreement

Objective 2.1 Prevent human-induced streamflow depletions that would cause non-compliance by Nebraska with the Nebraska New Depletion Plan included within the Platte River Recovery Implementation Program, for as long as the Program exists

Goal 3: Partner with municipalities and industries to maximize conservation and water use efficiency

Objective 3.1 Continue to collect data on water use and existing conservation plans of municipalities and industries within the basin

Objective 3.2 Invite municipalities and industries to the annual meetings

Objective 3.3 Establish baseline water use levels for each municipal and industrial user by January 1, 2026

Goal 4: Work cooperatively to identify and investigate disputes between groundwater users and surface water appropriators and, if determined appropriate, implement management solutions to address such issues

Objective 4.1 Identify disputes between groundwater users and surface water appropriators

Objective 4.2 Investigate and address issues between groundwater users and surface water appropriators, based on investigation results

Goal 5: Keep the Upper Platte River Basin-Wide Plan current and keep stakeholders informed

Objective 5.1 Meet at least annually to review progress toward achieving the goals and objectives of this Upper Platte River Basin-Wide Plan and those portions of the individual NRD IMPs that implement this plan

Objective 5.2 Improve information sharing with interested stakeholders

Objective 5.3 Conduct planning for subsequent increments of the plan, as necessary



PROPOSED TPNRD IMP

Integrated Management Plan (Proposed)

1. EFFECTIVE DATE
2. AUTHORITY
3. BACKGROUND
4. MAPS AND MANAGEMENT AREA BOUNDARIES

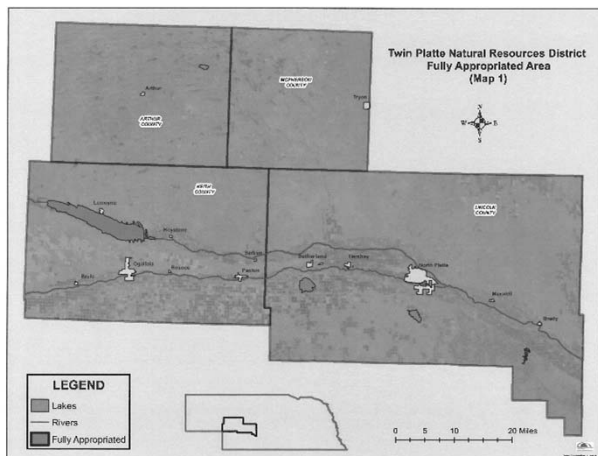


Figure 1

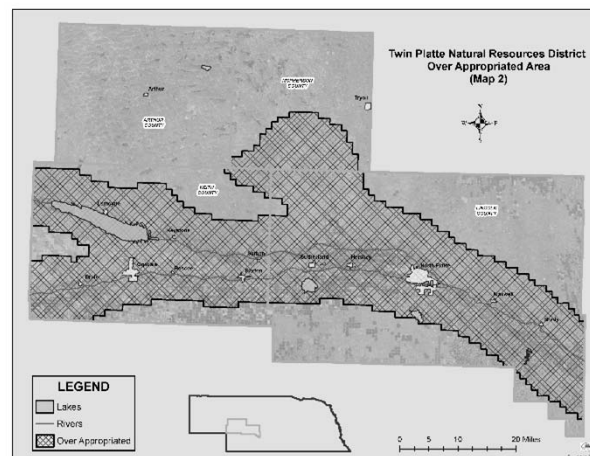


Figure 2

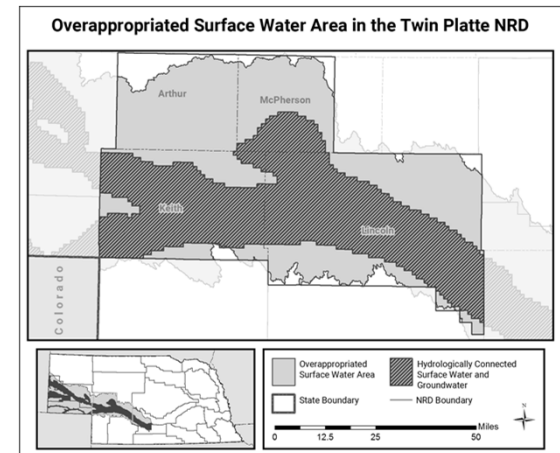


Figure 3

Integrated Management Plan (Proposed)

5. VISION STATEMENT
6. FUNDING
7. SCIENCE AND METHODS
 - 7.1 First Increment
 - 7.2 Second Increment
 - 7.3 Information Considered in Developing this IMP
8. FIRST INCREMENT ACCOMPLISHMENTS
 - 8.1 Studies Conducted and Information Obtained
 - 8.2 Summary of Management Actions
 - 8.3 Assessment of the First Increment (2019 Robust Review)
 - 8.4 Assessment of Fully Appropriated
 - 8.5 Basin-Wide Coordination

Integrated Management Plan (Proposed)

Goal 1: Reach and Maintain a Fully Appropriated Condition

To incrementally achieve and sustain a fully appropriated condition while maintaining economic viability, social and environmental health, safety, and welfare of the basin.

Objective 1.1 Within this increment of this IMP, implement measures to address impacts of streamflow depletions to surface water appropriations and water wells constructed in aquifers dependent upon recharge from streamflow to the extent those depletions are due to water use initiated after July 1, 1997.

Objective 1.2 Maintain previous increment mitigation progress.

TPNRD Annual Short-Term Offset Targets			
Year	South Platte River (AF)	North Platte River (AF)	Below Confluence (AF)
2019	-5,900	-6,900	-10,100
2020	-6,000	-7,000	-10,100
2021	-6,200	-7,000	-10,200
2022	-6,300	-7,100	-10,200
2023	-6,500	-7,100	-10,300
2024	-6,600	-7,100	-10,300
2025	-6,800	-7,200	-10,400
2026	-6,900	-7,200	-10,400
2027	-7,100	-7,300	-10,400
2028	-7,200	-7,300	-10,500
2029	-7,400	-7,300	-10,500

TPNRD Annual Long-Term Offset Targets			
Year	South Platte River (AF)	North Platte River (AF)	Below Confluence (AF)
2059-2063 average	-12,100	-8,600	-12,000

Integrated Management Plan (Proposed)

Goal 1: Reach and Maintain a Fully Appropriated Condition

To incrementally achieve and sustain a fully appropriated condition while maintaining economic viability, social and environmental health, safety, and welfare of the basin.

Objective 1.3 Make progress toward a fully appropriated condition.

Objective 1.4 Review the implementation of this IMP to ensure that the IMP provisions are adequate to sustain progress toward and/or maintain a fully appropriated condition.

Objective 1.5 Once a fully appropriated condition is achieved, maintain such condition through the implementation of the IMP.

Integrated Management Plan (Proposed)

Goal 2: Interstate Compliance

To ensure that no act or omission of the TPNRD or the NeDNR would cause noncompliance by Nebraska with any interstate decree, compact, or other formal state contract or agreement.

Objective 2.1 Ensure that no act or omission of the TPNRD or the NeDNR would cause noncompliance by Nebraska with the NNDP included within PRRIP, for as long as PRRIP exists.

Objective 2.2 Ensure that the groundwater and surface water controls adopted in the TPNRD IMP are sufficient to ensure that the state will remain in compliance with the NNDP.

Objective 2.3 Collectively, as defined in the NNDP, offset the new depletions caused by new uses within the Upper Platte River Basin NRDs.

Objective 2.4 Ensure that for post-1997 new or expanded uses, including irrigation, municipal, industrial, rural domestic and other new water related activities are assessed and offset for compliance with the NNDP. This assessment will be part of the Robust Review, explained in Section 10.7.3.2 of this plan.

Integrated Management Plan (Proposed)

Goal 3: Consistency, Communication, and Updates

Keep the IMP current, maintain consistency with the Basin-Wide Plan, and keep water users informed.

Objective 3.1 Amend this IMP as needed to remain consistent with the Basin-Wide Plan.

Objective 3.2 Participate in basin-wide planning activities.

Objective 3.3 Improve information sharing with interested parties.

Objective 3.4 Conduct planning for subsequent increments of the IMP, as necessary.

Objective 3.5 If appropriate and necessary, follow the dispute resolution process in the Basin-Wide Plan.

Integrated Management Plan (Proposed)

10. ACTION ITEMS

10.1 Information and Education Programs

10.2 Incentive Programs

10.3 Water Banking

10.4 Conjunctive Management

10.5 Drought Planning

10.6 Controls and Triggers

10.6.1 Ground Water Regulatory Actions (Controls)

- Mandatory Education
- Mandatory Data Collection

Integrated Management Plan (Proposed)

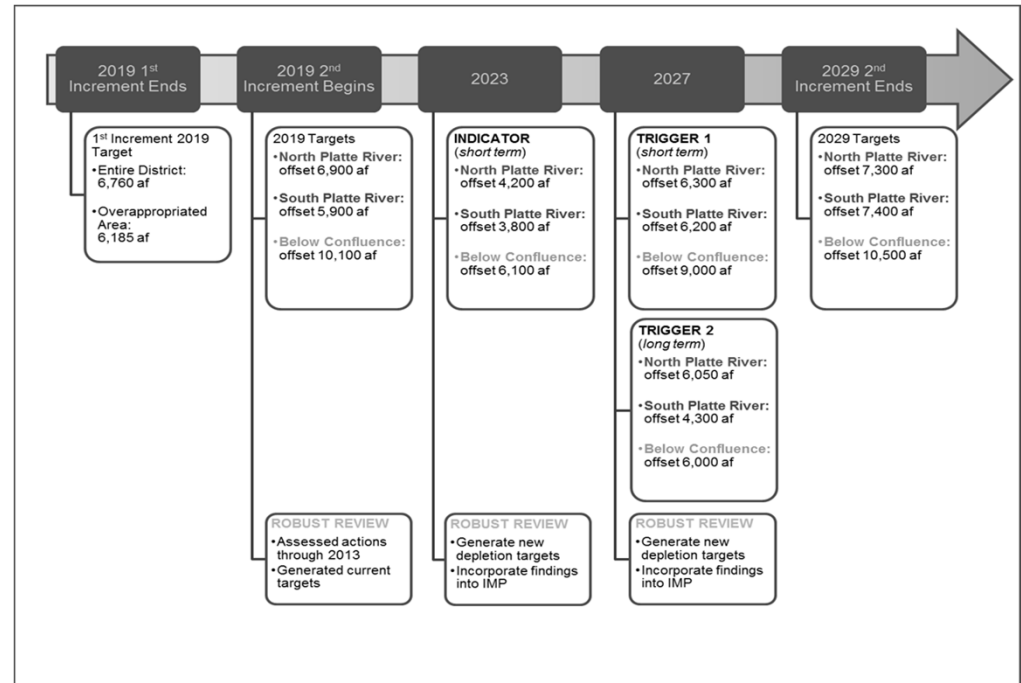
10. ACTION ITEMS (continued)

10.6 Controls and Triggers (continued)

10.6.2 Triggers

10.6.3 Surface Water Regulatory Actions

- Expanded data collection on SW uses
- Education on SW data



Integrated Management Plan (Proposed)

10. ACTION ITEMS (continued)

10.7 Monitoring and Evaluation

10.7.1 Data and Tracking of Water Use Activities

10.7.2 Reporting

10.7.3 Evaluation: Measuring the Success of Meeting the Goals and Objectives of this IMP

10.7.4 Evaluation: Measuring the Success of Reaching a Fully Appropriated Condition

10.7.5 Evaluation: Measuring the Success of Maintaining a Fully Appropriated Condition

10.7.6 Evaluating the Need for a Subsequent Increment

10.8 Studies to be Completed in the Current Increment

10.9 Review of and Modification of the IMP



NEXT STEPS



TPNRD Plan Adoption Schedule

DATE:	July 15 – July 19 All NRD Hearings		Following the hearings	Aug 8	Aug 8	Aug 12	Aug 12 – Sep 1	September 3
	July 16 TPNRD							
Basin-Wide Plan	Pre- Hearing Info Session: 2:00 pm CT	BWP Hearing: 3:00 pm CT	NRD/NeDNR consider testimony	Final Board Agreement	Final NRD/NeDNR Agreement	Final draft of BWP and IMP available to public	Notice of Order	BWP Effective and Second Increment Begins
Integrated Management Plan		IMP Hearing: 2:30 pm CT						IMP Effective and Second Increment Begins



THANK YOU

