



TBNRD IMP

Meeting 3
March 19, 2019

TODAY'S AGENDA

1. Welcome
2. Tri-Basin NRD Platte Basin IMP - 2nd Increment Draft Review
3. Stakeholder Discussion & Voting
4. Next Steps
5. Public Comment

WELCOME

- Open meeting notice
- December 2018 meeting recap
 - Review of draft Upper Platte Basin-Wide Plan
 - Conjunctive management
 - Drought planning
 - Robust Review results
 - Stakeholder feedback

Timeline

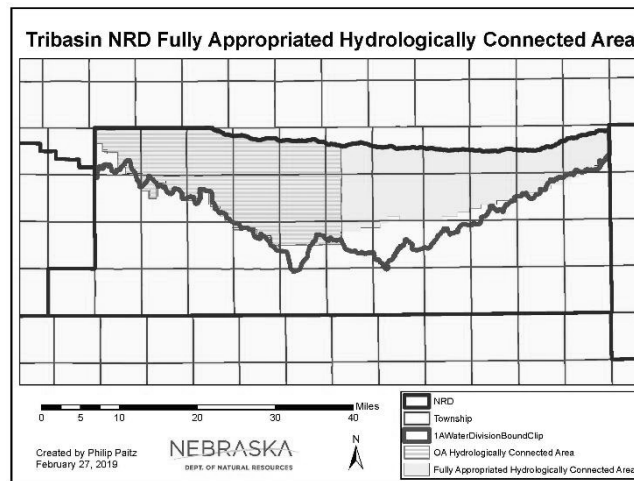
- June 11, 2019 – TBNRD board votes on draft for public hearing
- July 16, 2019 – Public hearing
- ????? ??, 2019 – TBNRD votes on final IMP



REVIEW OF DRAFT IMP

Integrated Management Plan (Draft)

1. EFFECTIVE DATE
2. AUTHORITY
3. BACKGROUND
4. MAPS AND MANAGEMENT AREA BOUNDARIES



(Page 6 in Plan)

Figure 1: Political and hydrologic boundaries of IBNRD.

Integrated Management Plan (Draft)

5. VISION

The vision (overall goal) of this IMP for Tri-Basin NRD is to “work cooperatively with District residents and others to promote good stewardship of land and water resources.”

Tri-Basin NRD’s mission is to “manage, conserve and protect the District’s land and water resources.” This mission will be accomplished by protecting the quality and quantity of surface water and groundwater, reducing soil erosion and flooding, promoting agricultural best management practices, forestry and wildlife habitat preservation. These tasks can only be accomplished by working cooperatively with local residents and agencies of local, state and federal government

Integrated Management Plan (Draft)

6. FUNDING
7. SCIENCE AND METHODS
 - 7.1 First Increment
 - 7.2 Ongoing Increments
 - 7.3 Information Considered in Developing this IMP

Integrated Management Plan (Draft)

8. FIRST INCREMENT ACCOMPLISHMENTS

8.1 Studies Conducted in the First Increment

8.2 Summary of Management Actions in the First Increment

8.3 Assessment of First Increment (Robust Review)

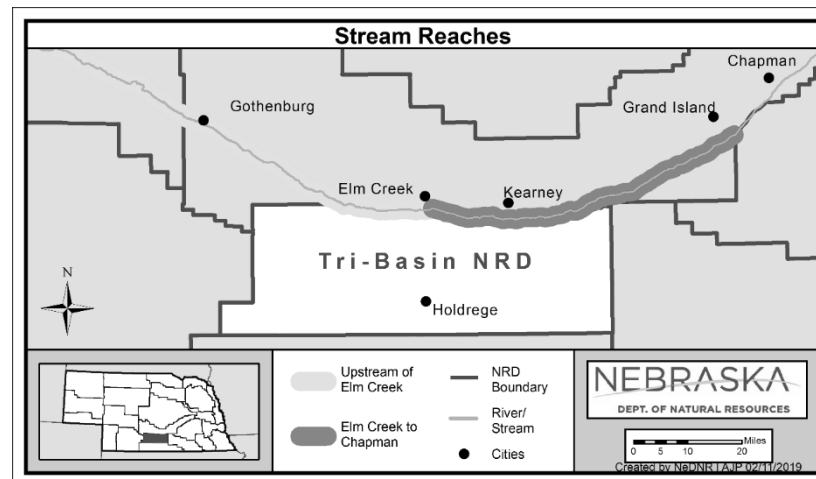


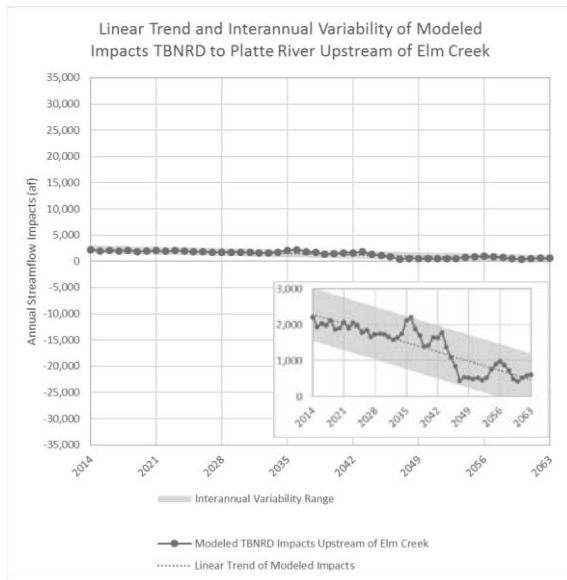
Figure 2: Stream reaches for Robust Review analysis

(Page 17 in Plan)

Integrated Management Plan (Draft)

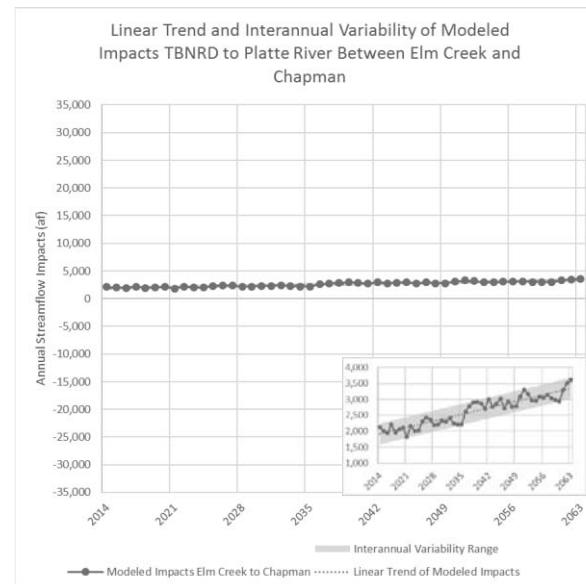
8. FIRST INCREMENT ACCOMPLISHMENTS

8.3 Assessment of First Increment (Robust Review)



(Page 18 in Plan)

Figure 3. Modeled TBNRD post-1997 impacts to the Platte River upstream of Elm Creek, the linear trend line of the modeled impacts from 2014-2063, and the inter-annual variability range of modeled impacts across the trend.



(Page 19 in Plan)

Figure 4. Modeled TBNRD post-1997 impacts to the Platte River between Elm Creek and Chapman, the linear trend line of the modeled impacts from 2014-2063, and the inter-annual variability range of modeled impacts across the trend.

Integrated Management Plan (Draft)

8. FIRST INCREMENT ACCOMPLISHMENTS

8.4 Assessment of Fully Appropriated Condition

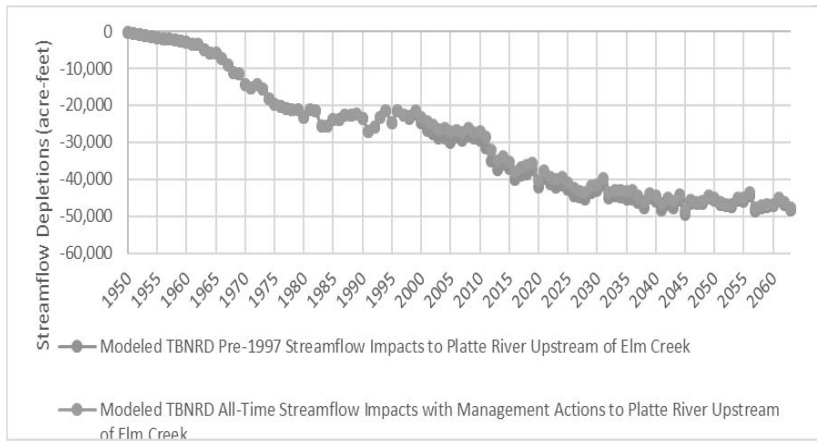


Figure 5. Modeled TBNRD post-1997 impacts to the Platte River upstream of Elm Creek
(Page 20 in Plan)

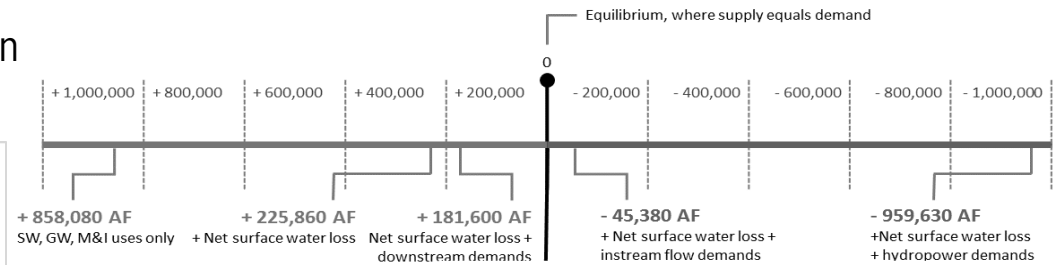


Figure 6. Average balance of water supplies in the basin compared to the various levels of demands.

(Page 21 in Plan)

8.5 Basin-Wide Coordination in the First Increment (Platte Basin Coalition)

Integrated Management Plan (Draft)

9. Goal 1: Reach and Maintain a Fully Appropriated Condition
 - 1.1 Within this increment of this IMP, implement measures to address impacts of streamflow depletions to surface water appropriations and water wells constructed in aquifers dependent upon recharge from streamflow to the extent those depletions are due to water use initiated after July 1, 1997.
 - 1.2 Maintain previous increment mitigation progress

Tri-Basin NRD Short Term Targets		
Year	Upstream of Elm Creek	Elm Creek to Chapman
2019	2,100	2,100
2020	2,100	2,100
2021	2,000	2,100
2022	2,000	2,100
2023	2,000	2,200
2024	1,900	2,200
2025	1,900	2,200
2026	1,800	2,300
2027	1,800	2,300
2028	1,800	2,300
2029	1,700	2,400

Table 1: Modeled depletions to the Platte River from the 2019 Robust Review analysis for TBNRD upstream of Elm Creek and Elm Creek to Chapman.
(Page 24 in Plan)

Tri-Basin NRD Long Term (2059-2063 average) Targets		
	Upstream of Elm Creek	Elm Creek to Chapman
Tri-Basin NRD	500	3,300

Table 2: Long term modeled depletions to the Platte River from the 2019 Robust Review analysis for TBNRD upstream of Elm Creek and Elm Creek to Chapman.

(Page 25 in Plan)

Integrated Management Plan (Draft)

9. Goal 1: Reach and Maintain a Fully Appropriated Condition
 - 1.3 Make progress toward a fully appropriated condition.
 - 1.4 Review the implementation of this IMP to ensure that the IMP provisions are adequate to sustain progress toward and/or maintain a fully appropriated condition.
 - 1.5 Once a fully appropriated condition is achieved, maintain such condition through the implementation of the IMP.

Integrated Management Plan (Draft)

9. Goal 2: Interstate Compliance

- 2.1 To ensure that no act or omission of the TBNRD would cause noncompliance by Nebraska with the NNDP included within PRRIP, for as long as PRRIP exists.
- 2.2 Ensure that the groundwater and surface water controls adopted in the individual NRD IMPs are sufficient to ensure that the state will remain in compliance with the NNDP.
- 2.3 Collectively, as defined in the NNDP, offset the new depletions caused by new uses within the Platte River Basin NRDs.
- 2.4 Ensure that for post-1997 new or expanded uses, including irrigation, municipal, industrial, rural domestic and other new water related activities are assessed and offset for compliance with the NNDP. This assessment will be part of the Robust Review, explained in Section 10.7.3.
- 2.5 The Department and TBNRD will insure that implementation of the IMP will not interfere with successful implementation of the joint IMP for the Republican Basin portion of TBNRD by reducing potential “imported water” gains to the Republican Basin.

Integrated Management Plan (Draft)

9. Goal 3: Consistency and Updates
 - 3.1 Amend this IMP as needed to remain consistent with the Basin-Wide Plan.
 - 3.2 Participate in basin-wide planning activities.
 - 3.3 Improve information sharing with interested parties.
 - 3.4 Conduct planning for subsequent increments of the plan, as necessary.
 - 3.5 If appropriate and necessary, follow the dispute resolution process in the Basin-Wide Plan.

Integrated Management Plan (Draft)

10. ACTION ITEMS

- 10.1 Information and Education Programs
- 10.2 Incentive Programs
- 10.3 Water Banking
- 10.4 Conjunctive Management
- 10.5 Drought Plan

Integrated Management Plan (Draft)

10. ACTION ITEMS

10.6 Regulatory Action Items (Controls)

10.6.1 Ground Water Regulatory Action Items

10.6.2 Triggers

10.6.3 Surface Water Regulatory Actions (Controls)

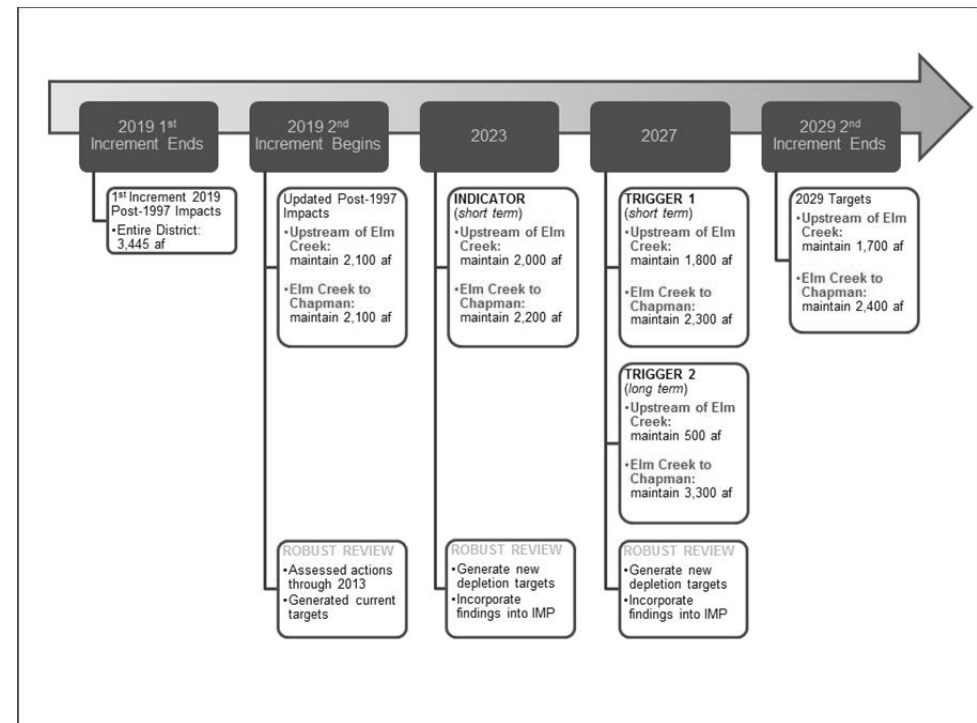


Figure 7: Timeline showing Indicator, Trigger 1, and Trigger 2 for the two stream reaches in TBNRD for the current increment. (page 37)

Integrated Management Plan (Draft)

10. ACTION ITEMS (continued)

10.7 Monitoring

10.7.1 Data and Tracking of Water Use Activities

10.7.2 Reporting

10.7.3 Evaluation: Measuring the Success of Meeting the Goals and Objectives of this IMP

10.8 Current Increment Studies

10.9 Review of and Modifications to the IMP



VOTING



NEXT STEPS

Timeline

- June 11, 2019 – TBNRD board votes on draft for public hearing
- July 16, 2019 – Public hearing
- ????? ??, 2019 – TBNRD votes on final IMP



PUBLIC COMMENT

Thank you