



# Integrated Management Planning in the Upper Platte Basin: Here's to Another Ten Years

NARD Fall Conference

Jessie Winter  
Integrated Water Management Coordinator  
Nebraska Department of Natural Resources

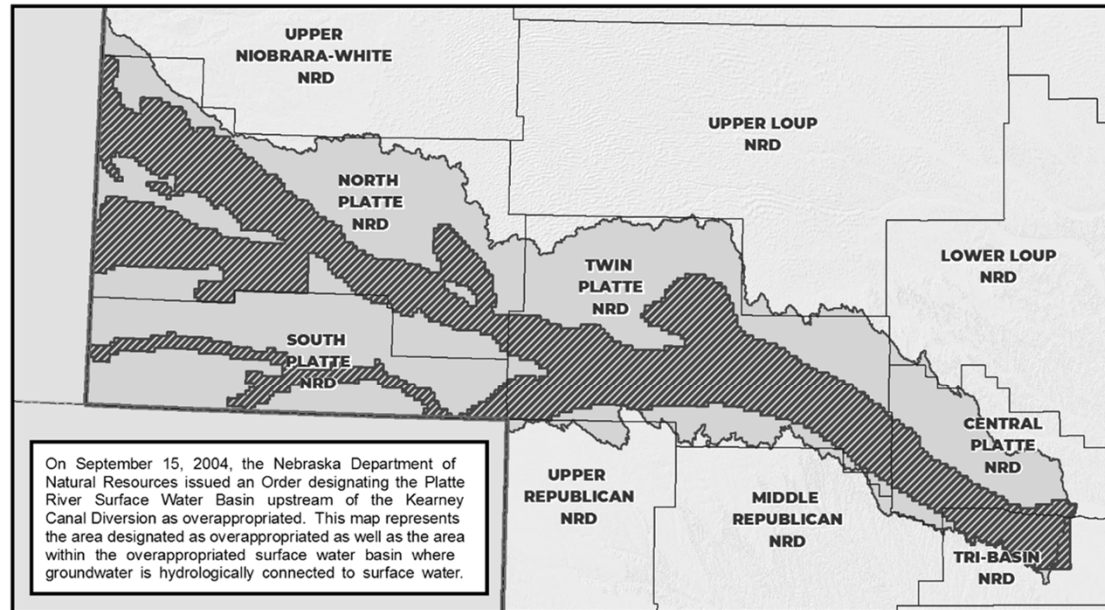
# Integrated Management in the Upper Platte

- Background and First Increment
- Planning Process
- Basin-Wide Plan
- IMPs
- Lessons Learned

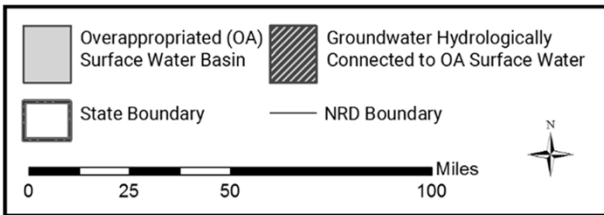
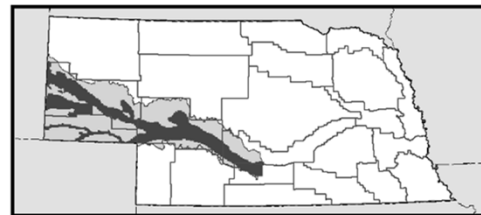


How did we get here?

## Upper Platte Basin-Wide Planning Area



On September 15, 2004, the Nebraska Department of Natural Resources issued an Order designating the Platte River Surface Water Basin upstream of the Kearney Canal Diversion as overappropriated. This map represents the area designated as overappropriated as well as the area within the overappropriated surface water basin where groundwater is hydrologically connected to surface water.



# LB 962

- Legislative Bill 962 passed in 2004
- Directed development & implementation of IMPs and BWPs

## Basin-Wide Plan

- All basin NRDs & NeDNR
- Overappropriated Area
- Goals & objectives
  - Focused on regional, cross-boundary issues and opportunities
  - Consistency and collaboration among basin NRDs
  - A broad framework

## Integrated Management Plan

- 1 NRD & NeDNR
- Overappropriated and fully appropriated areas
- Goals, objectives, & controls
  - Specific to one NRD
  - Tailored to local issues and opportunities
  - Specific targets and actions that each NRD will use to meet the goals of the Basin-Wide Plan as well as individual Integrated Management Plan goals

## STATUTORY REQUIREMENTS § 46-715(2)(a)

### Integrated Management Plan and Basin Wide Plan

The plan shall include clear goals and objectives with a purpose of sustaining a balance between water uses and water supplies so that the economic viability, social and environmental health, safety, and welfare of the basin can be achieved and maintained for both the near term and the long term

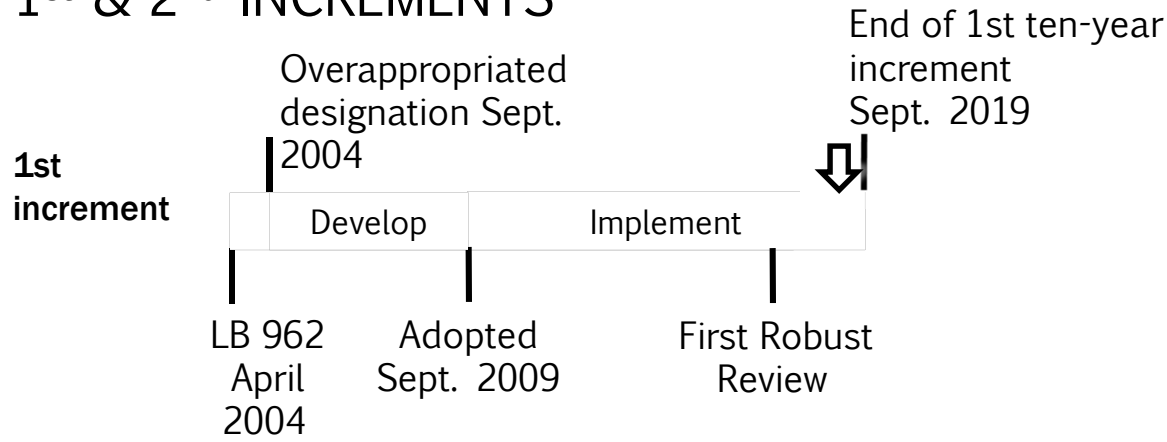
## STATUTORY REQUIREMENTS § 46-715(2)(b) – (e)

### Integrated Management Plan

- A map of the area subject to the integrated management plan;
- At least one ground water control and at least one surface water control
- A monitoring plan
  - Plan to gather and evaluate data, information, and methodologies to increase understanding of the surface water and hydrologically connected ground water system, and test the validity of the conclusions and information upon which the integrated management plan is based.

# UPPER PLATTE BASIN-WIDE PLAN

## 1<sup>st</sup> & 2<sup>nd</sup> INCREMENTS





## First Increment Accomplishments

- Certification of irrigated acres
- Limits on new uses, rules for transfers, allocations and meters
- Offset activities
  - Irrigated land retirements
  - Canal Rehab projects
  - Recharge projects
  - Augmentation projects
- Improved technical understanding of the Basin
- Basin-wide coordination

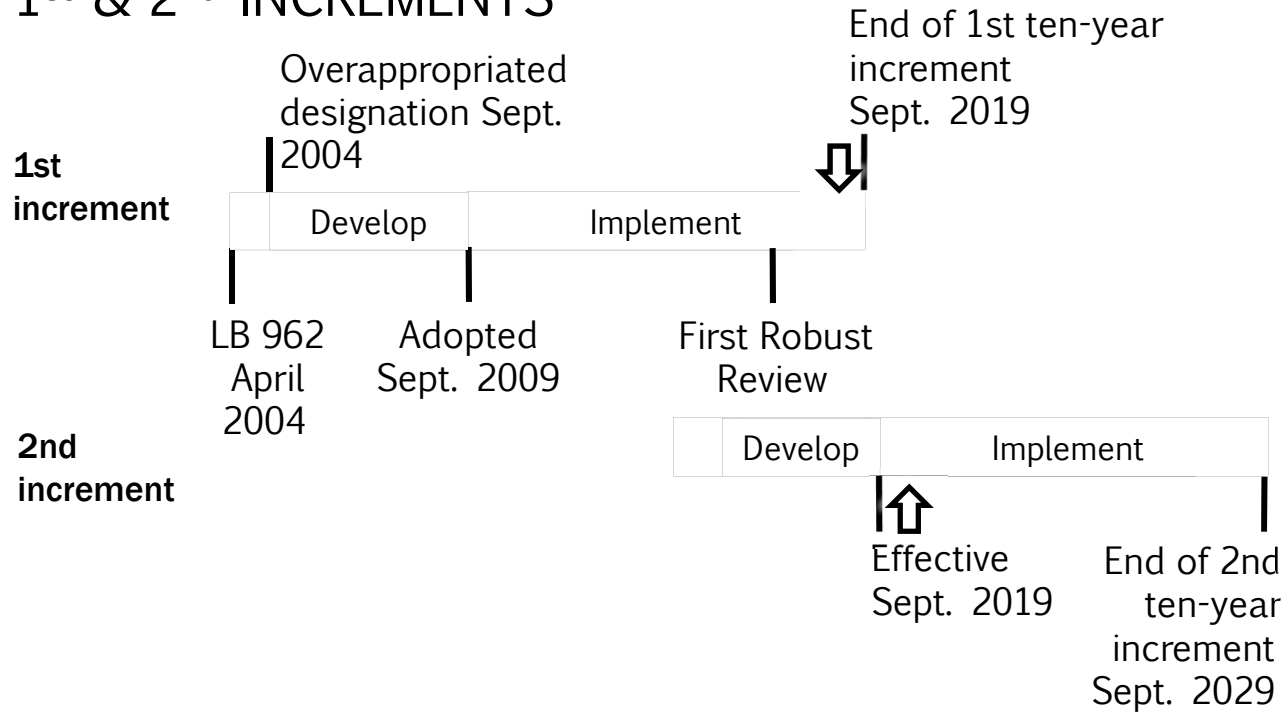


# Planning Process

Second Increment

# UPPER PLATTE BASIN-WIDE PLAN

## 1<sup>st</sup> & 2<sup>nd</sup> INCREMENTS



## Pre-Stakeholder Process

- Began technical analyses (robust review) in 2015
- Started with development of Public Participation Plan for BWP in 2015
- Coordination meetings with NRDs
- Selected consultant to facilitate stakeholder meetings
- Invite stakeholders

## Stakeholder meetings

- BWP stakeholder meetings started June 2016, held every other month
  - Intro and background
  - Getting feedback
  - Working together to develop goals
- Stakeholders had red, yellow, green voting cards to indicate agreement on ideas
- IMP stakeholder meetings began in 2018

## Wrapping it up

- Stakeholder agreement on Goals and Objectives
- Final drafting of plans done by NeDNR and NRDs
- Board agreement for hearing
  - Exchange letters
- Public information sessions and hearings
- Consider testimony
- Board final agreement
  - Exchange letters
- Orders, noticing, plans effective



# Upper Platte Basin-Wide Plan

Goals & Objectives

---

---

**Goal 1: Incrementally achieve and sustain a fully appropriated condition, while maintaining economic viability, social and environment health, safety, and welfare of the basin**

Objective 1.1 Maintain previous increment mitigation progress

Objective 1.2 Offset impacts of streamflow depletion to (A) surface water appropriations and (B) water wells constructed in aquifers dependent on recharge from streamflow to the extent those depletions are due to water use initiated after July 1, 1997

Objective 1.3 Make progress toward a fully appropriated condition

Objective 1.4 Conduct technical analyses to support and evaluate effectiveness of plan and adequacy in sustaining progress toward a fully appropriated level of water use

Objective 1.5 Use available funds and actively pursue new funding opportunities to offset depletions, as well as to develop, maintain and update data and analytical tools needed to implement this plan

Objective 1.6 Update and continue implementing IMPs in each Platte River Basin NRD

---

---



Goal 1: Incrementally achieve and sustain a fully appropriated condition, while maintaining economic viability, social and environment health, safety, and welfare of the basin

Objective 1.3 Make progress toward a fully appropriated condition

- 1.3.1: Understand the economic impacts of supply variability on water users
- 1.3.2: Assess short- and long- term basin water supply and demand
- 1.3.3: Explore and implement potential measures to mitigate impacts (hydrologic and economic) of basin supply variability due to human-made depletions on surface water and groundwater users
- 1.3.4: Develop a basin drought contingency plan for management of supplies during times of shortage

Goal 2: Prevent or mitigate human-induced reductions in the flow of a river or stream that would cause non-compliance with an interstate compact or decree or other formal state contract or agreement

Objective 2.1 Prevent human-induced streamflow depletions that would cause non-compliance by Nebraska with the Nebraska New Depletion Plan included within the Platte River Recovery Implementation Program, for as long as the Program exists

---

---

## Goal 3: Partner with municipalities and industries to maximize conservation and water use efficiency

Objective 3.1 Continue to collect data on water use and existing conservation plans of municipalities and industries within the basin

Objective 3.2 Invite municipalities and industries to the annual meetings

Objective 3.3 Establish baseline water use levels for each municipal and industrial user by January 1, 2026

---

---

---

---

Goal 4: Work cooperatively to identify and investigate disputes between groundwater users and surface water appropriators and, if determined appropriate, implement management solutions to address such issues

Objective 4.1 Identify disputes between groundwater users and surface water appropriators

Objective 4.2 Investigate and address issues between groundwater users and surface water appropriators, based on investigation results

---

---

---

---

## Goal 5: Keep the Upper Platte River Basin-Wide Plan current and keep stakeholders informed

Objective 5.1 Meet at least annually to review progress toward achieving the goals and objectives of this Upper Platte River Basin-Wide Plan and those portions of the individual NRD IMPs that implement this plan

Objective 5.2 Improve information sharing with interested stakeholders

Objective 5.3 Conduct planning for subsequent increments of the plan, as necessary

---

---



IMPs

Effective September 11 & 17, 2019

**Basin-Wide Plan for Joint Integrated Water Resources Management of Overappropriated Portions of the Platte River Basin, Nebraska**  
SECOND INCREMENT (2019-2029)

CPNRD CENTRAL PLATTE NORTH PLATTE SOUTH PLATTE TWIN PLATTE NEBRASKA DEPT. OF NATURAL RESOURCES

**INTEGRATED MANAGEMENT PLAN**  
Jointly Developed by the Twin Platte Natural Resources District and the Nebraska Department of Natural Resources

**TWIN PLATTE**  
NATURAL RESOURCES DISTRICT

Good Life. Great Water.

DEPT. OF NATURAL RESOURCES

111 South Stearns St.  
P.O. Box 1450  
North Platte, NE 68901  
402.533.6866  
www.twinplatte.org

Integrated Management Plan  
Second Increment for the  
Twin Platte Natural Resources District and the  
Nebraska Department of Natural Resources

**Twin Platte**  
Natural Resources District

111 South Stearns St.  
North Platte, NE 68901  
Phone: 402.533.6866  
www.twinplatte.org  
Email: [info@twinplatte.org](mailto:info@twinplatte.org)

**NEBRASKA**  
DEPT. OF NATURAL RESOURCES

111 Central Mall South  
Lincoln, NE 68508  
Phone: 402.471.2811  
www.dnr.nebraska.gov

**INTEGRATED MANAGEMENT PLAN**  
Jointly Developed by the South Platte Natural Resources District and the Nebraska Department of Natural Resources

**SOUTH PLATTE**  
NATURAL RESOURCES DISTRICT

Good Life. Great Water.

DEPT. OF NATURAL RESOURCES

P.O. Box 262, 25847 Airport Road  
Scottsbluff, Nebraska 68903-0262  
Telephone: 308.632.2749  
www.southplatte.org

**NEBRASKA**  
DEPT. OF NATURAL RESOURCES

111 Central Mall South  
Lincoln, NE 68508  
Phone: 402.471.2811  
www.dnr.nebraska.gov

Integrated Management Plan  
Jointly Developed by the North Platte Natural Resources District and the Nebraska Department of Natural Resources



**NORTH PLATTE**  
NATURAL RESOURCES DISTRICT

Good Life. Great Water.

DEPT. OF NATURAL RESOURCES

P.O. Box 9671,  
301 Central Mall South  
Lincoln, Nebraska 68508-0967  
Telephone: 402.471.2811  
www.northplatte.org

CPNRD MAP 9/11/2019

**INTEGRATED MANAGEMENT PLAN**  
Jointly Developed by the Central Platte Natural Resources District and the Nebraska Department of Natural Resources



**CPNRD**  
CENTRAL PLATTE  
NATURAL RESOURCES DISTRICT

Good Life. Great Water.

DEPT. OF NATURAL RESOURCES

111 South Stearns St.  
Lincoln, NE 68508  
308.396.6228  
cpnrld.org

**NEBRASKA**  
DEPT. OF NATURAL RESOURCES

Good Life. Great Water.

111 Central Mall South  
Lincoln, NE 68508  
402.471.2811  
dnr.nebraska.gov

## Integrated Management Plans

1. EFFECTIVE DATE
2. AUTHORITY
3. BACKGROUND
4. MAPS AND MANAGEMENT AREA BOUNDARIES



---

---

# Integrated Management Plans

## 5. VISION STATEMENT

## 6. FUNDING

## 7. SCIENCE AND METHODS

7.1 First Increment

7.2 Second Increment

7.3 Information Considered in Developing this IMP

## 8. FIRST INCREMENT ACCOMPLISHMENTS

8.1 Studies Conducted

8.2 Management Actions Taken

8.3 Robust Review

---

---

## Integrated Management Plans

### Goal 1: Reach and Maintain a Fully Appropriated Condition

To incrementally achieve and sustain a fully appropriated condition while maintaining economic viability, social and environmental health, safety, and welfare of the basin.

Objective 1.1 Within this increment of this IMP, implement measures to address impacts of streamflow depletions to surface water appropriations and water wells constructed in aquifers dependent upon recharge from streamflow to the extent those depletions are due to water use initiated after July 1, 1997.

Objective 1.2 Maintain previous increment mitigation progress

---

---

## Integrated Management Plans

### Goal 1: Reach and Maintain a Fully Appropriated Condition

To incrementally achieve and sustain a fully appropriated condition while maintaining economic viability, social and environmental health, safety, and welfare of the basin.

Objective 1.3 Make progress toward a fully appropriated condition.

Objective 1.4 Review the implementation of this IMP to ensure that the IMP provisions are adequate to sustain progress toward and/or maintain a fully appropriated condition.

Objective 1.5 Once a fully appropriated condition is achieved, maintain such condition through the implementation of the IMP.

---

---

# Integrated Management Plan

## Goal 2: Interstate Compliance

Prevent or mitigate human-induced reductions in the flow of a river or stream and ensure that no act or omission of the SPNRD or NeDNR would cause noncompliance by Nebraska with any interstate decree, compact, or other formal state contract or agreement pertaining to any ground water or surface water use or supplies.

- Objective 2.1 To ensure that no act or omission of the SPNRD or the NeDNR would cause noncompliance by Nebraska with the NNDP included within PRRIP, for as long as PRRIP exists.
- Objective 2.2 Ensure that the groundwater and surface water controls adopted in the District IMP are sufficient to ensure that the state will remain in compliance with the Nebraska New Depletion Plan.
- Objective 2.3 Collectively, as defined in the Nebraska New Depletion Plan, offset the new depletions caused by new uses within the Upper Platte River Basin NRDs.
- Objective 2.4 Ensure that for post-1997 new or expanded uses, including irrigation, municipal, industrial, rural domestic and other new water related activities are assessed and offset for compliance with the NNDP. This assessment will be part of the Robust Review, explained in chapter 10.7.3 of this plan.

## Integrated Management Plans

### Goal 3: Consistency, Communication, and Updates

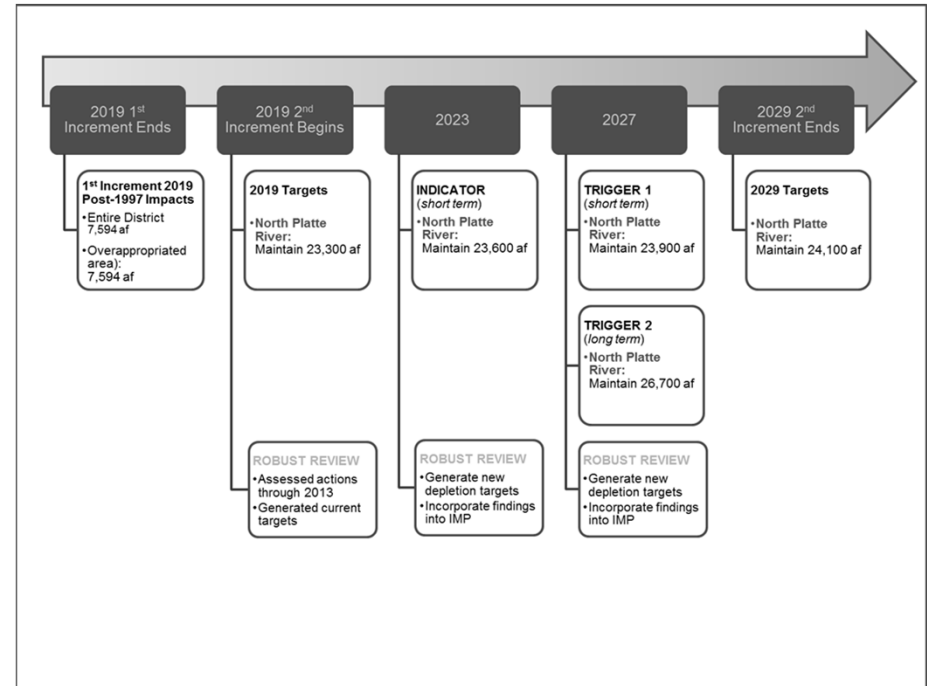
Keep the IMP current, maintain consistency with the Basin-Wide Plan, and keep water users informed.

- Objective 3.1 Amend this IMP as needed to remain consistent with the Basin-Wide Plan.
- Objective 3.2 Participate in basin-wide planning activities.
- Objective 3.3 Improve information sharing with interested parties.
- Objective 3.4 Conduct planning for subsequent increments of the IMP, as necessary.
- Objective 3.5 If appropriate and necessary, follow the dispute resolution process in the Basin-Wide Plan.

# Integrated Management Plans

## 10. ACTION ITEMS

- 10.1 Information and Education Programs
- 10.2 Incentive Programs
- 10.3 Water Banking
- 10.4 Conjunctive Management
- 10.5 Drought Plan
- 10.6 Regulatory Action Items (Controls)
  - 10.6.1 Ground Water Regulatory Action Items
  - 10.6.2 Triggers
  - 10.6.3 Surface Water Regulatory Action Items



---

---

# Integrated Management Plans

## 10. ACTION ITEMS (continued)

### 10.7 Monitoring

10.7.1 Data and Tracking of Water Use Activities

10.7.2 Reporting

10.7.3 Evaluation: Measuring the Success of Meeting the Goals and Objectives of this IMP

### 10.8 Studies for Current Increment

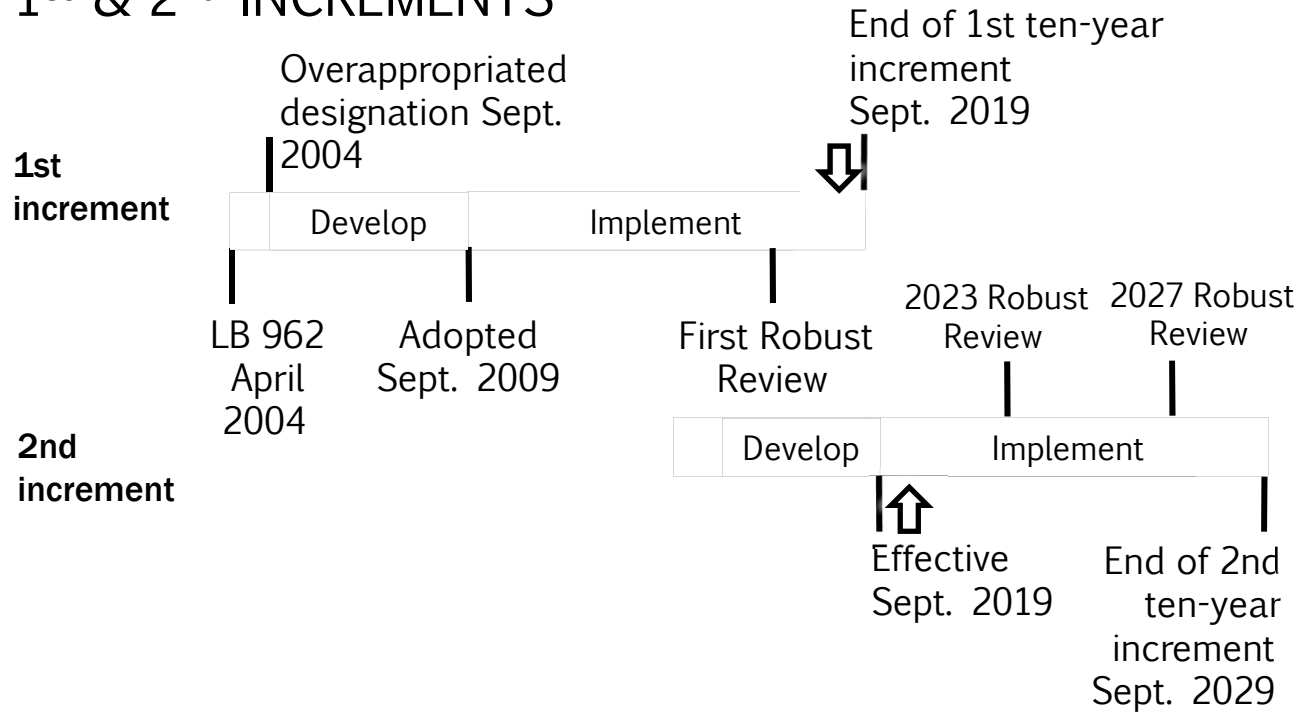
### 10.9 Review of and Modifications to the IMP

---

---

# UPPER PLATTE BASIN-WIDE PLAN

## 1<sup>st</sup> & 2<sup>nd</sup> INCREMENTS







# LESSONS LEARNED

---

---

# Fun Facts

- 5 IMPs, 1 BWP
- 4 technical reports
- 1,539 pages of plan
- Hundreds of drafts
- 32 stakeholder meetings
  - 3+ per NRD, 12 Basin-Wide
- 10 public hearings in 4 days
- 20 letters of agreement
- 16 orders
- 20 notices published 3 weeks

## Lessons Learned

- Involve stakeholders early
- Define process and roles
- Coordination is key
- Allow plenty of time for draft review, especially before going to hearing
- Track administrative items closely
- It's never too early to start preparing



Thank You