

# Hydrologic Connection Analyses in the Lower Platte

Lower Platte River Basin Annual Meeting  
July 23, 2019

Philip Paitz  
Water Planning IWM Analyst

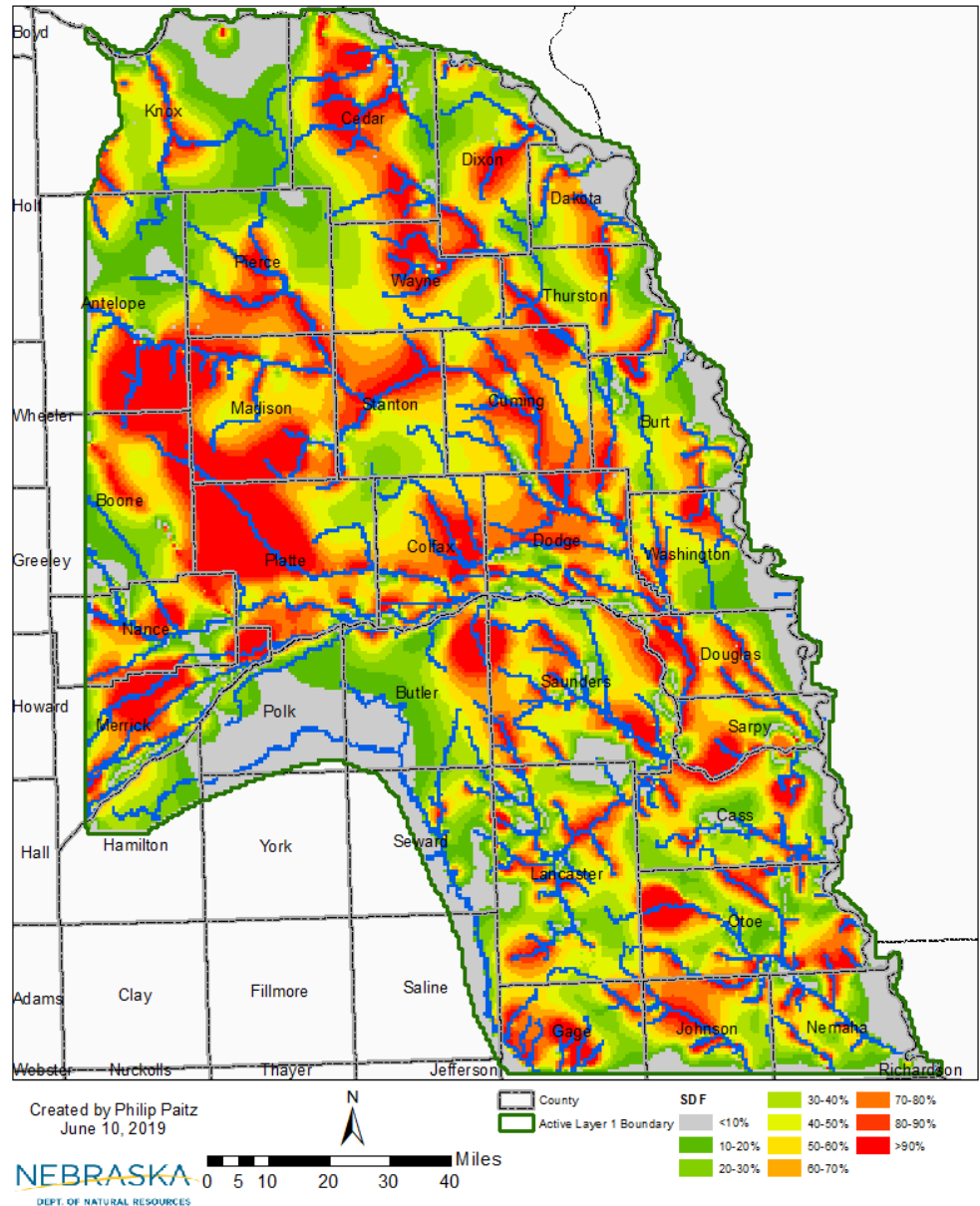


# Outline

- Cycle Well Analysis Preliminary Results
- Lower Elkhorn NRD Pilot Scale Area (LENRD-PSA Model) Overview
- LENRD-PSA Results
- Future Analyses with LENRD-PSA
- LPNNRD AEM Survey Project

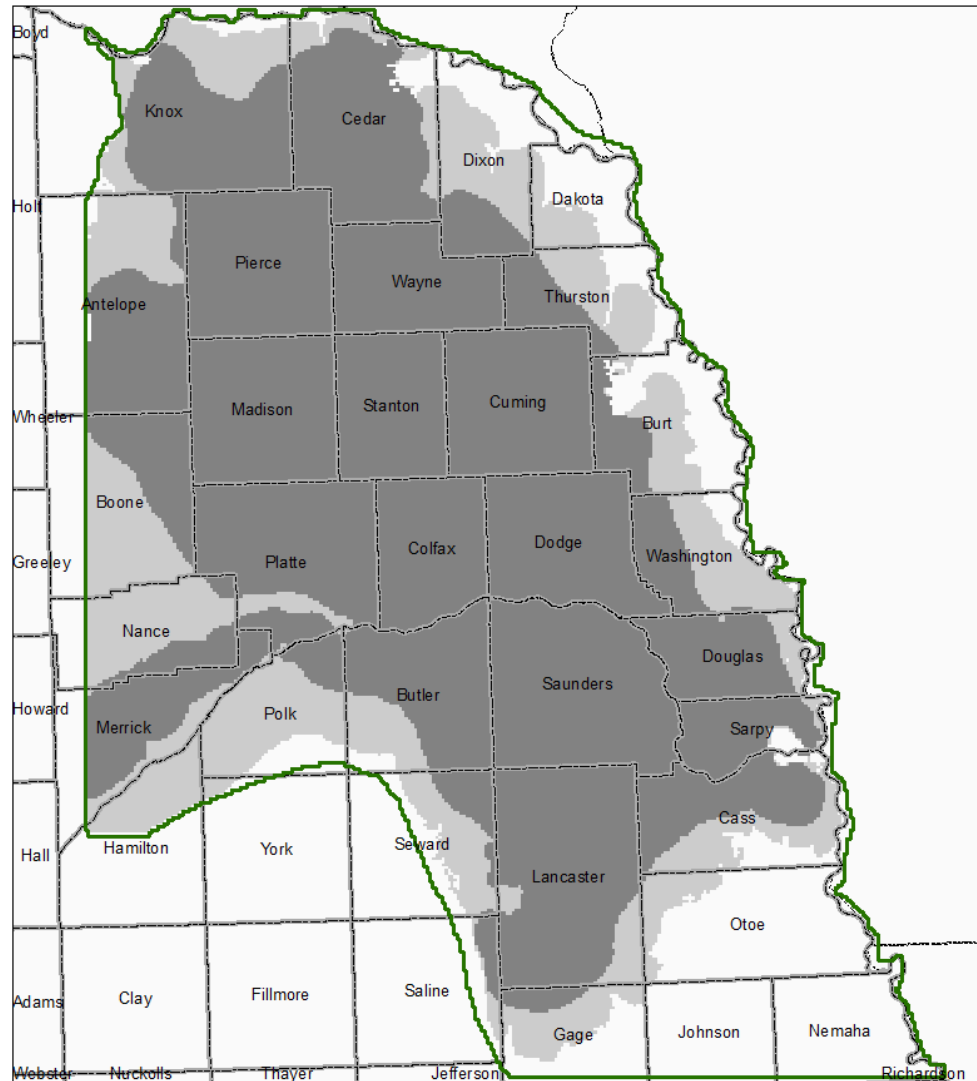
# LPMT Cycle Well Results

## Lower Platte Missouri Tributary Stream Depletion Factors



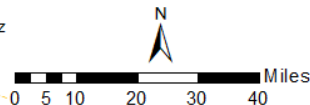
# LPMT Cycle Well Results – Platte River Tributaries only

## Lower Platte Missouri Tributary Stream Depletion Factors



Created by Philip Paitz  
June 10, 2019

NEBRASKA  
DEPT. OF NATURAL RESOURCES



County  
Active Layer 1 Boundary

**Platte River Tribs Only**  
<10%  
>10%

# What's Left to Do?

- QAQC the process, post-processing, and results
- Finalize documentation and write metadata for shapefiles
- Present final results to the Lower Platte River Basin Coalition Technical Committee

# LENRD-Pilot Scale Area Model

## ➤ Purpose

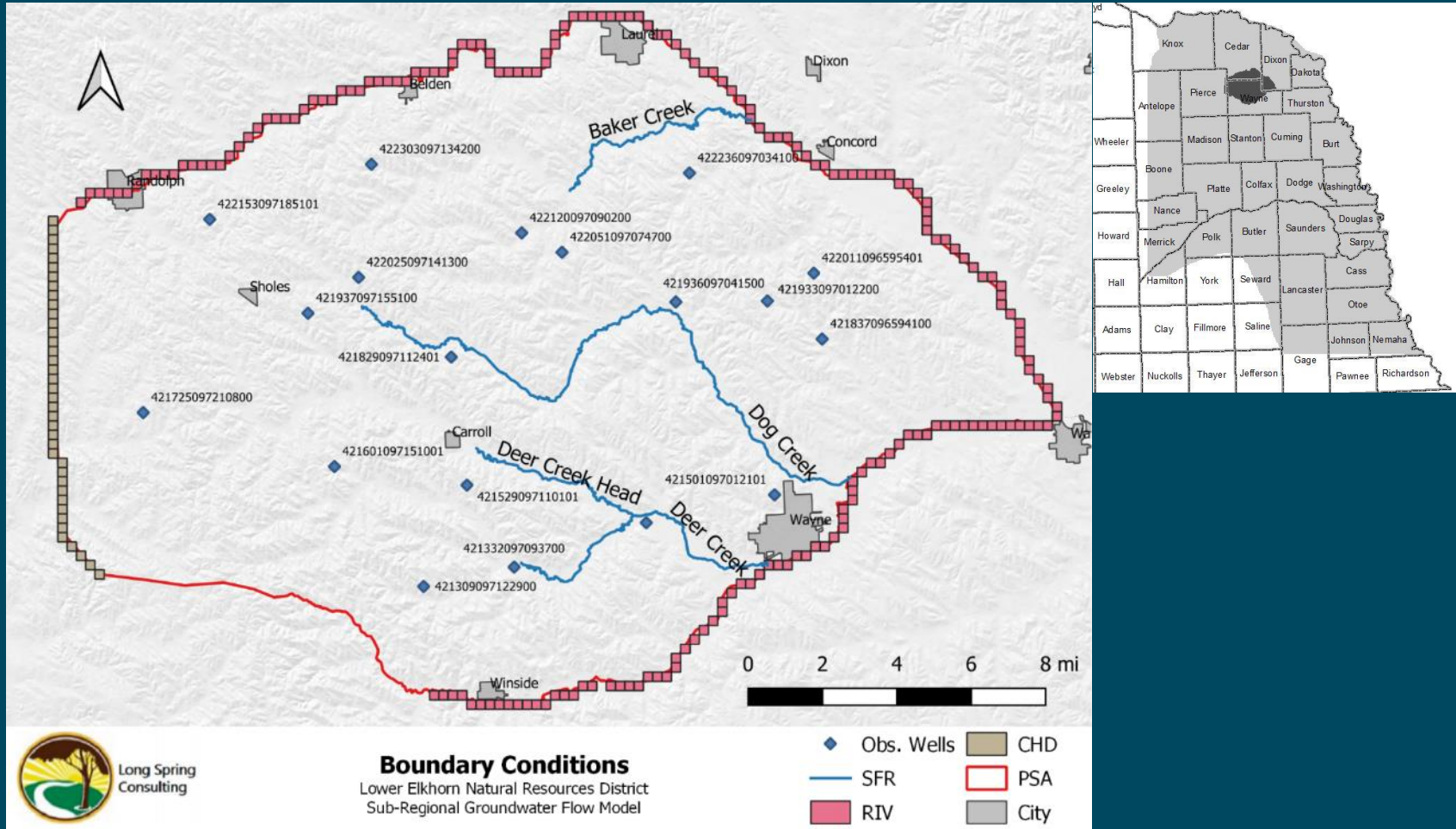
- Incorporate AEM flight data into the existing LPMT regional model to determine if improved modeling results can be achieved through finer remotely sensed geologic data

## ➤ AEM

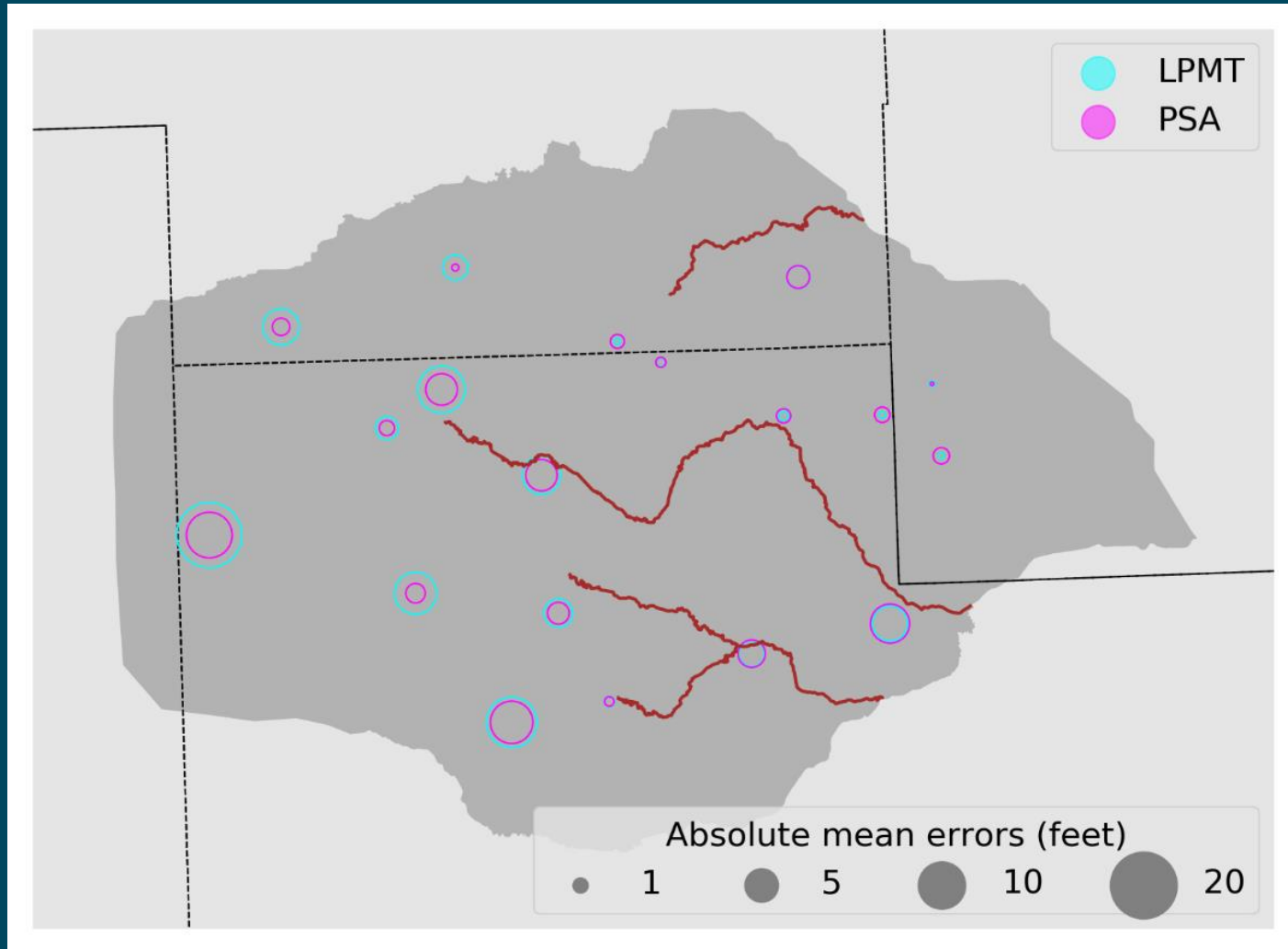
## ➤ Contracted and Built

- LENRD and NeDNR: Model sponsors
- JEO Consulting: Main contracting and consulting work
- Long Spring Consulting: Construction of the Numerical Model
- WSP USA: AEM interpretation

# LENRD-Pilot Scale Area Model



# PSA Residuals



Residual - Difference between and observed and modeled value



# LENRD-PSA Future Analysis

## ➤ Cycle Well Analysis

- Compare results from LPMT
- Test MODFLOW-USG
- See how a refined model (layers, grid, pumping) responds

## ➤ Additional Scenarios

- See how model reacts due to pumping from different layers

# LPNNRD AEM Surveys

## ➤ Purpose

- Working with UNL-CSD to develop a hydrogeologic framework based on test hole, transducer, and AEM data for the Lower Platte North NRD

## ➤ Utilizing GeoScene3D for analysis

## ➤ Partnering with

- Jesse Korus and Jackie Polanshek (graduate student)
- Lower Platte North NRD



# Summary

- Cycle Well QAQC is currently underway
- LENRD-PSA model incorporated AEM data
- LENRD-PSA cycle well analysis will begin soon
- Continue to work with our partners (LENRD, LPNNRD, and CSD) to integrate AEM data into the LPMT model

NEBRASKA

Good Life. Great Water.

DEPT. OF NATURAL RESOURCES

# THANK YOU

Philip Paitz

Water Planning IWM Analyst

[philip.paitz@nebraska.gov](mailto:philip.paitz@nebraska.gov)

[dnr.nebraska.gov](http://dnr.nebraska.gov)

