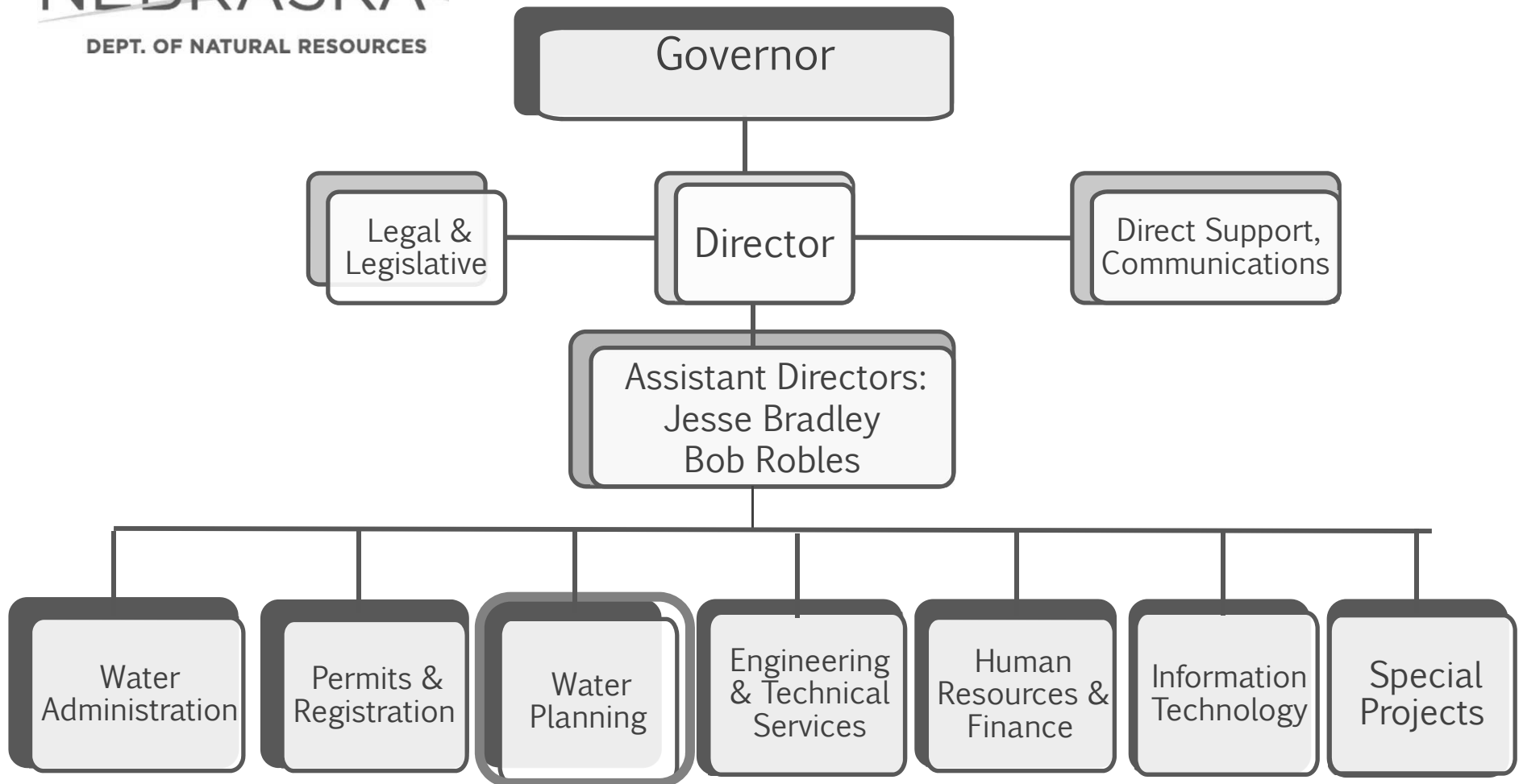


Voluntary Integrated Management Planning

Lower Big Blue NRD Board Meeting
September 10, 2018

Amy Zoller, MS, Integrated Management Coordinator
Nebraska Department of Natural Resources

NEBRASKA
Good Life. Great Water.
DEPT. OF NATURAL RESOURCES



Overview

- Legislative framework
- Roles of agencies/stakeholders
- What is in an IMP?
- What is involved in developing an IMP?
- Why would we develop an IMP?

Legislative Background

- LB962 (2004)—Legally acknowledged hydrologically connected ground and surface waters
 - Joint NeDNR and NRD process to develop IMPs in fully or over-appropriated basins
- LB764 (2010)—Inclusion of voluntary IMP process
- LB1098 (2014)—Water Sustainability Fund legislation with IMP component

IMPs: Joint Planning Process

EFFECTIVE MANAGEMENT OF HYDROLOGICALLY CONNECTED WATERS



Surface Water Quantity

- Regulated by NeDNR
- Prior appropriations system

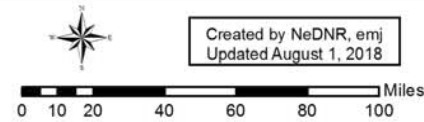
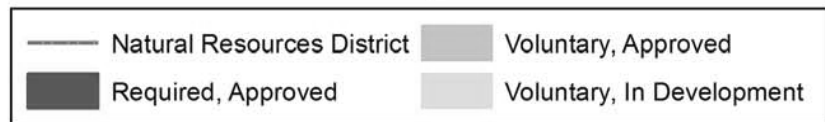
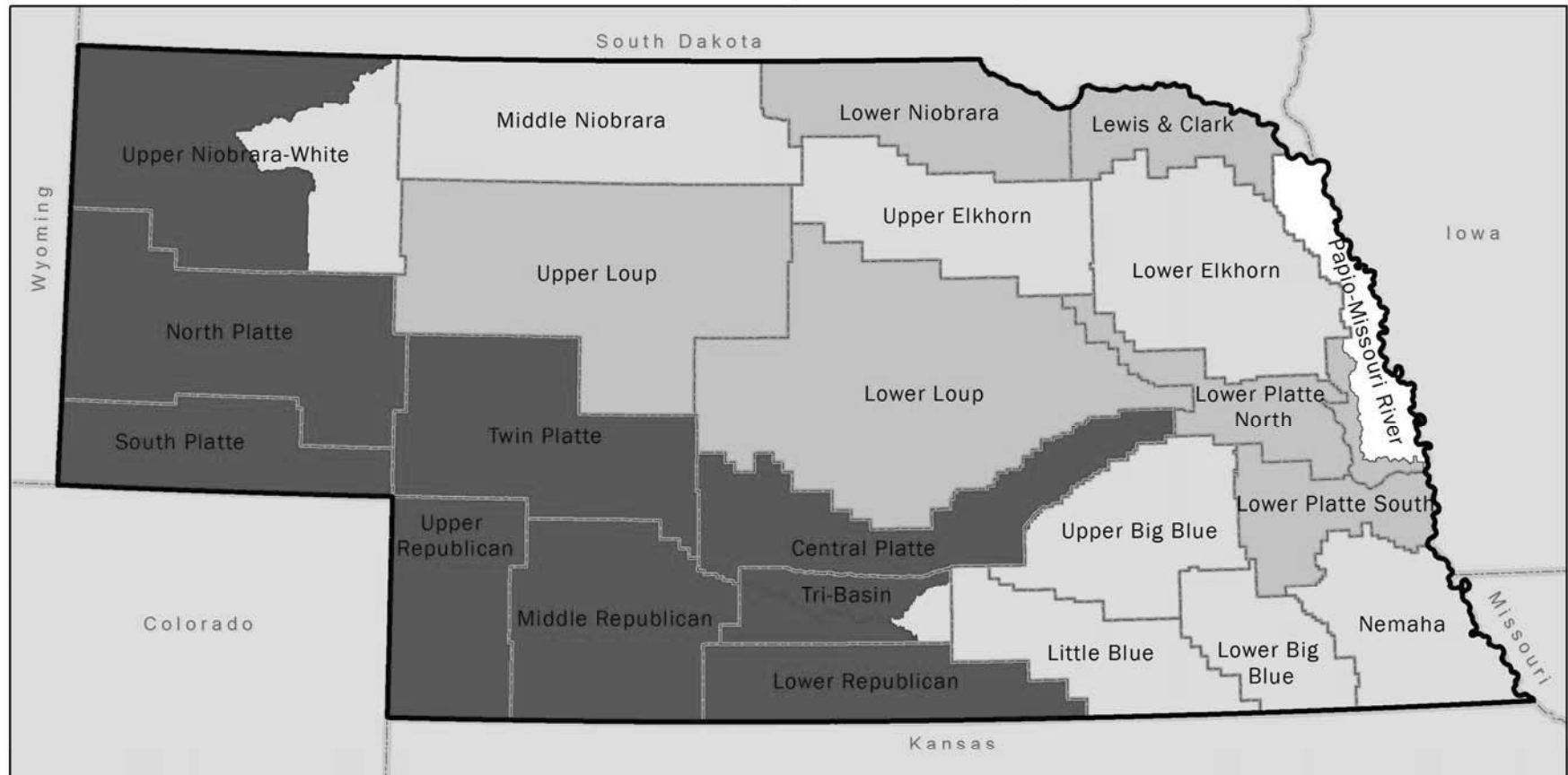
**Integrated
Water
Management**

Groundwater Quantity

- Regulated by NRDs
- Correlative rights system

Status of IMPs in Nebraska

NRD Areas Involved in Integrated Management Planning



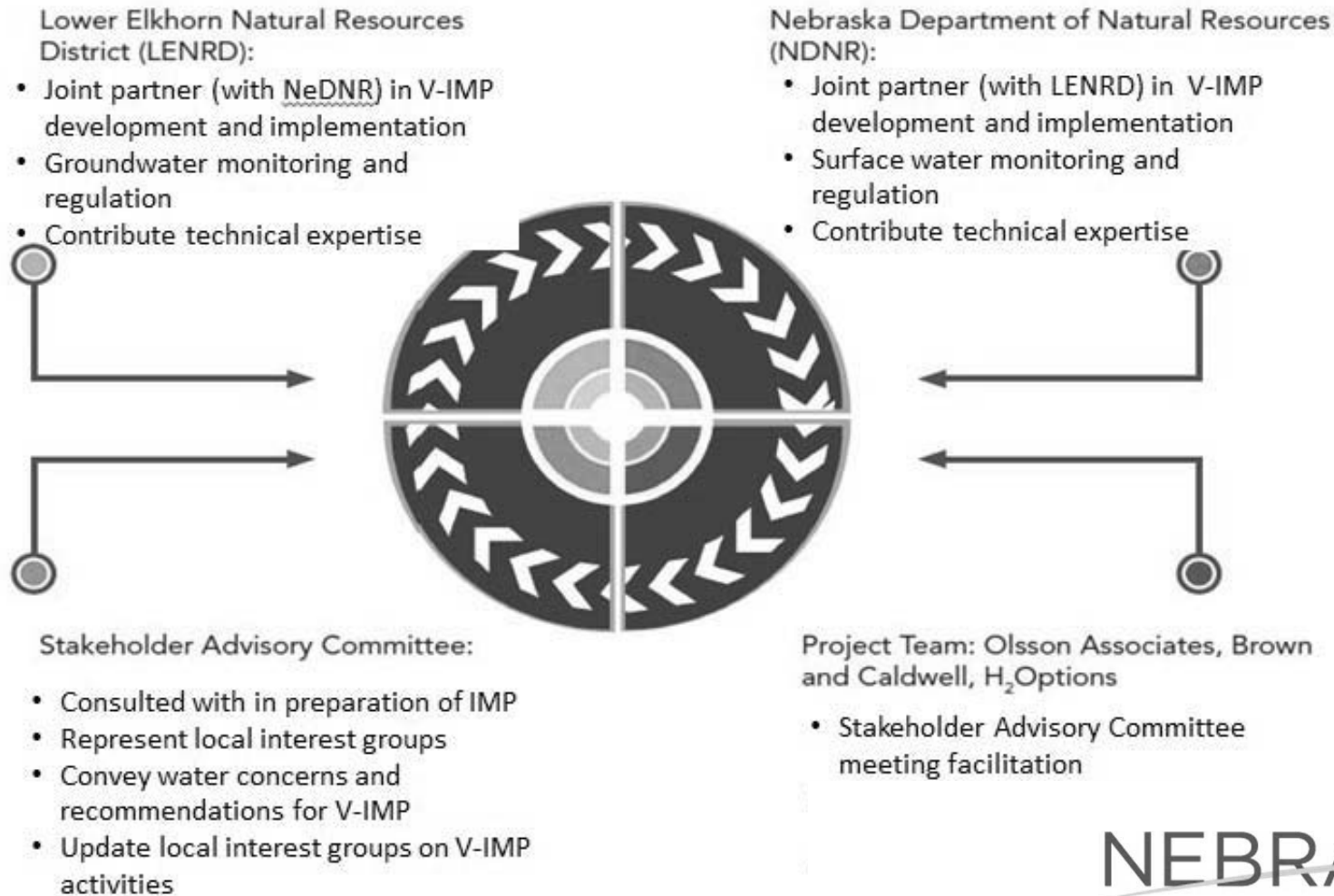
NEBRASKA
DEPT. OF NATURAL RESOURCES

Voluntary and Fully Appropriated IMP's

IMP as result of Fully Appropriated Designation	Voluntary IMP
Achieve and sustain a balance between water uses and water supplies for the long term	
Protect existing water uses	
Fully appropriated basins, sub-basins	Non-fully appropriated basins, sub-basins
<u>May</u> have more stringent controls	<u>May</u> have more “encouraging” controls
Moratorium (GW, SW) initiated	No Moratorium initiated

Participants in Integrated Management Planning

Who is participating?



(figure adapted from Lower Elkhorn IMP)

Stakeholder Advisory Committees



Little Blue River Basin Voluntary IMP
Little Blue NRD Stakeholder Meeting #1: May 19, 2016



Components of an IMP

- Required Components

- Map of Geographic Area
- Goals/Objectives
 - Purpose to achieve a balance between uses and supplies
- Regulatory Action Items
 - One or more GW controls (§ 46-739)
 - One or more SW controls (§ 46-716)
- Monitoring Program

} Consistent with goals/objectives

- Additional Components

- Non-regulatory Action Items
- Review Process
- Education and outreach plan
- Incentive programs

Controls (authorized by Neb. Rev. Stat.)

...consistent to achieve goals and objectives

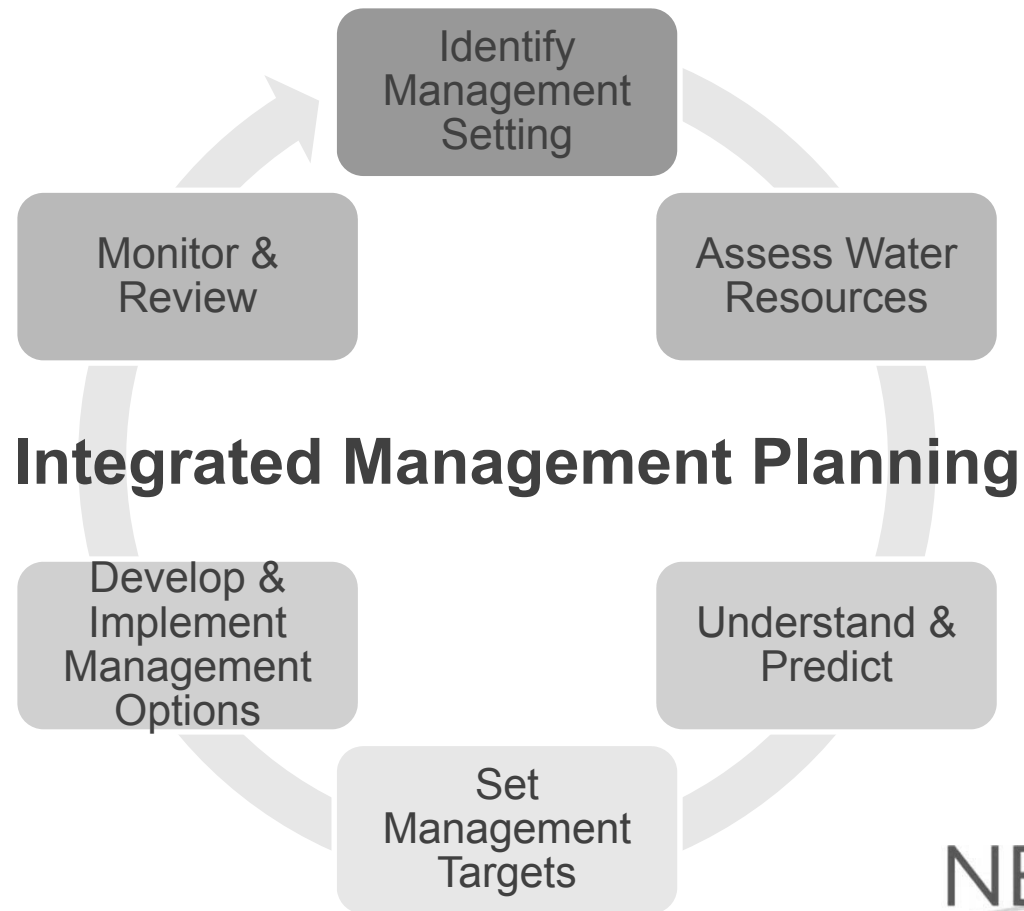
- GW controls authorized by § 46-739:

- Limit GW expansion
- Transfers
- Municipal/Industrial Tracking
- Well-spacing
- Meters
- Educational requirements
- Certified Acres
- Allocations
- Rotations
- Acres Reduction
- Others

- SW controls authorized by § 46-716:

- Increased Monitoring
- Variance/Transfers
- Conservation Measures
- Moratoriums
- Others

IMP Long-term Process



Voluntary IMP Development

- NRD contacts NeDNR to initiate process
- Consultation with stakeholders
 - Goals and Objectives, action items

Meeting Date	Meeting Focus
#1: September 27, 2012	Introduction of IMP Development Process and Purpose
#2: November 5, 2012	Issues Identification
#3: December 10, 2012	Goals and Objectives
#4: February 4, 2013	Goals and Objectives (cont.)
#5: June 8, 2013	Action Items Prioritization
#6: October 28, 2013	Recommendations on Draft IMP

- NRD/NeDNR draft IMP
- Public hearing process
- Publish orders –IMP becomes effective

Voluntary IMP Development

Phase		2016												2017											
		J	F	M	A	M	J	J	A	S	O	N	D	J	F	M	A	M	J	J	A	S	O	N	D
1	Internal Planning-- NRD, NeDNR Discuss IMP, bring on JEO, plan Stakeholder Process																								
2	Stakeholder Meetings																								
3	Draft IMP--NRD and NeDNR work together, lots of coordination meetings																								
4	Public Meeting--optional as each stakeholder meeting has been noticed																								
5	Pre-hearing IMP Agreement-DNR and NRD letter exchange, final draft IMP																								
6	Public Hearing Process—Three weeks of public noticing. Anyone can testify.																								
7	NRD/DNR Consider Testimony-If no or minor changes needed, proceed to 8.																								
7	Post-hearing Agreements-letter ex- change between DNR/NRD; adopt IMP																								
8	Orders—NRD gives GW order, DNR gives SW order. IMP effective date set.																								
9	Effective Date- IMP becomes effective																								

IMP Development Considerations

- Geographic Area: Hydrologically Connected area or whole NRD
- Stakeholder involvement considerations
- Complimentary to other Basin NRD IMPs?
- Consultant desired? If so, what is their role?
 - Data preparation, dissemination?
 - Facilitate meetings?
 - Assist in plan writing?

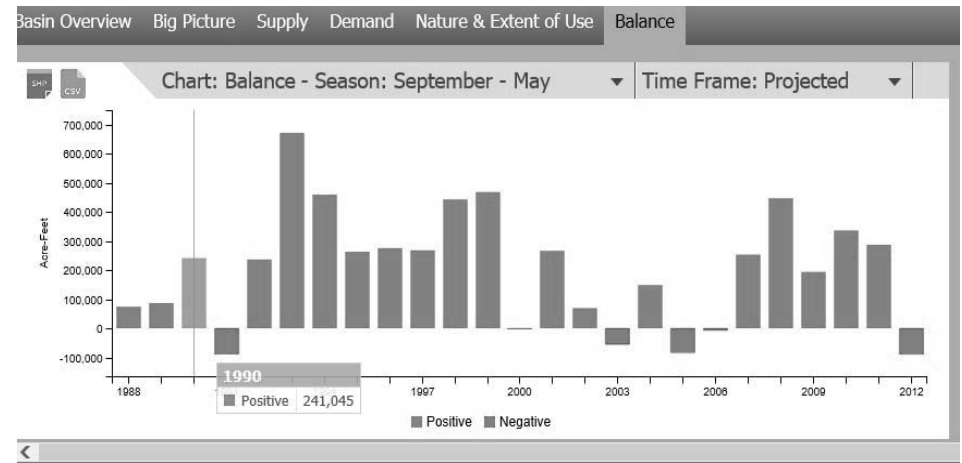
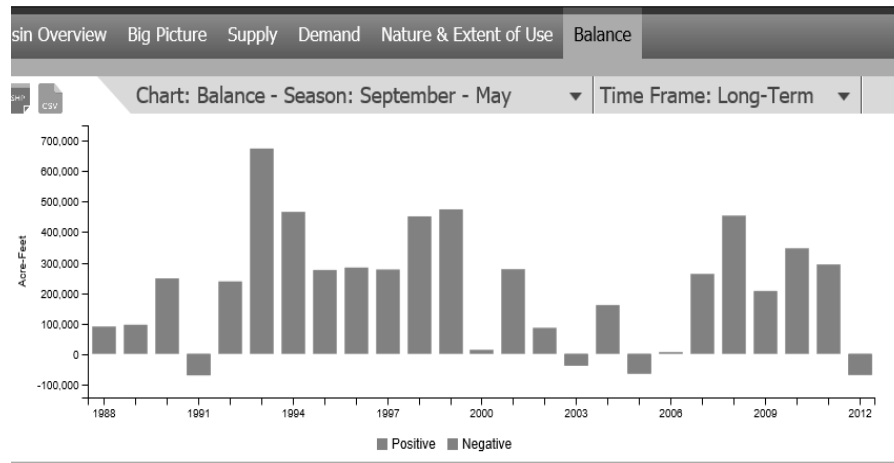
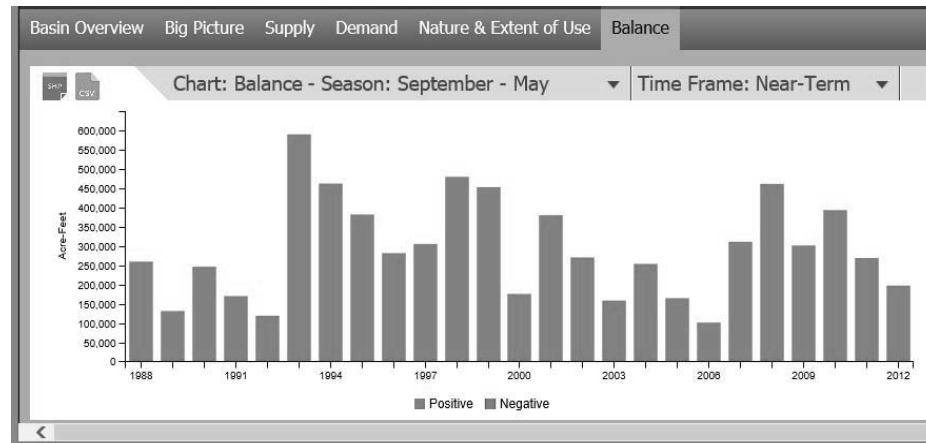
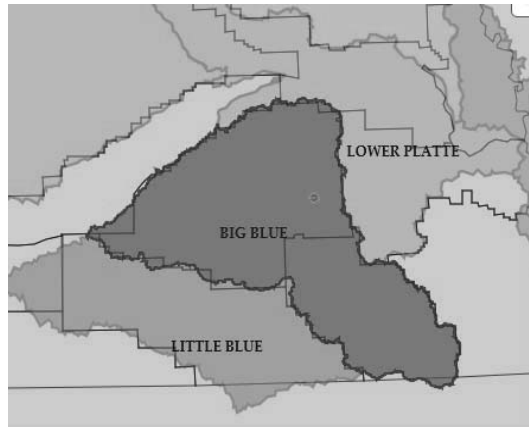
Why would we develop an IMP? (NeDNR perspectives)

- More localized understanding of future water uses/needs
- Jointly build a foundation of data and tools, and framework for data exchange
- Identify opportunities to better adapt to changing conditions
- Build relationships with NRDs to address water management from multiple scales

Why would we develop an IMP?

- Improved agency relationships
- Improved data acquisition/dissemination
- If fully appropriated designation occurs, would already have IMP framework in place
- Eligibility for the Water Sustainability Fund
- Proactive approach to water management
- Local buy-in
- Multi-directional education process

INSIGHT Water Balance for Big Blue Basin



Links

- Approved Voluntary IMPs
 - <https://dnr.nebraska.gov/water-planning/approved-water-management-plans> (Voluntary IMPs are LPSNRD, Papio-MR, LPNNRD, LNNRD, L&CNRD, LLNRD, and ULNRD)
- INSIGHT web tool
 - <http://www.dnr.ne.gov/insight/>
- Nebraska revised statutes
 - <https://nebraskalegislature.gov/laws/browse-statutes.php> (46-715 to 46-718 for IMPs)

NEBRASKA

Good Life. Great Water.

DEPT. OF NATURAL RESOURCES

301 Centennial Mall South, 4th Floor

PO Box 94676

Lincoln, NE 68509-4676

402-471-2363

Thank you!

Amy Zoller, MS

Integrated Water Management Coordinator

Nebraska Department of Natural Resources

(402) 471-0625

amy.zoller@nebraska.gov