

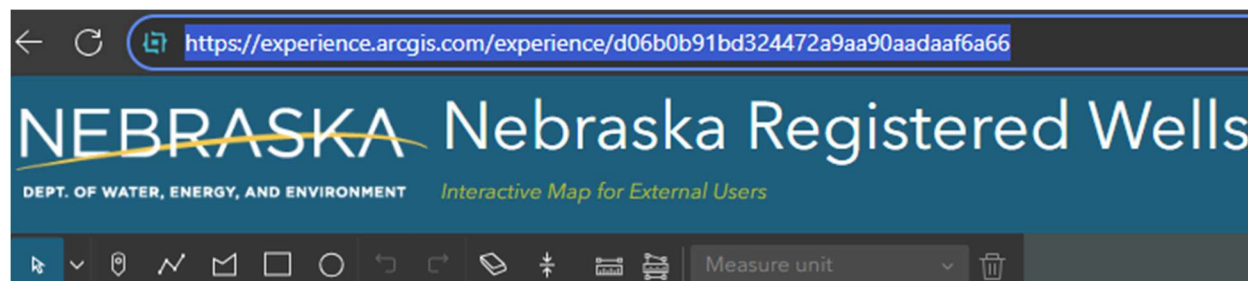
DWEE REGISTERED GROUNDWATER WELL INTERACTIVE MAP TIPS

Greetings from the GIS team at the Department of Water, Energy, and Environment. The current Nebraska Registered Wells Inventory Application will be deprecated and replaced with the new Nebraska Registered Wells Inventory Application Web Experience in ArcGIS Online. What this means is that we have been working diligently on a new interactive map for registered groundwater well data that adds new features and improves performance. You will need to make new bookmarks for the new registered groundwater well map. See the links below.

This upgrade provides improved performance and additional functionality. The Nebraska Registered Wells Inventory Interactive mapping application can be accessed at

<https://experience.arcgis.com/experience/d06b0b91bd324472a9aa90aadaaf6a66> or by visiting <https://dnr.nebraska.gov/groundwater/groundwater-interactive-maps>.

If you experience difficulties using the interactive map you should try the following remedies which fix the great majority of issues seen by frequent users of this resource. The first thing to try is an application reset. This is done by selecting the address of the map in your browser's URL window and then simultaneously holding down the CTRL and F5 keys. Here is a view of selecting the map URL before executing the CTRL-F5 command:



If this does not fix the issue, then reboot your device and execute the CTRL-F5 command again. Finally, if the issue persists you may need to erase your browser history. The exact sequence for erasing browser history varies by browser.

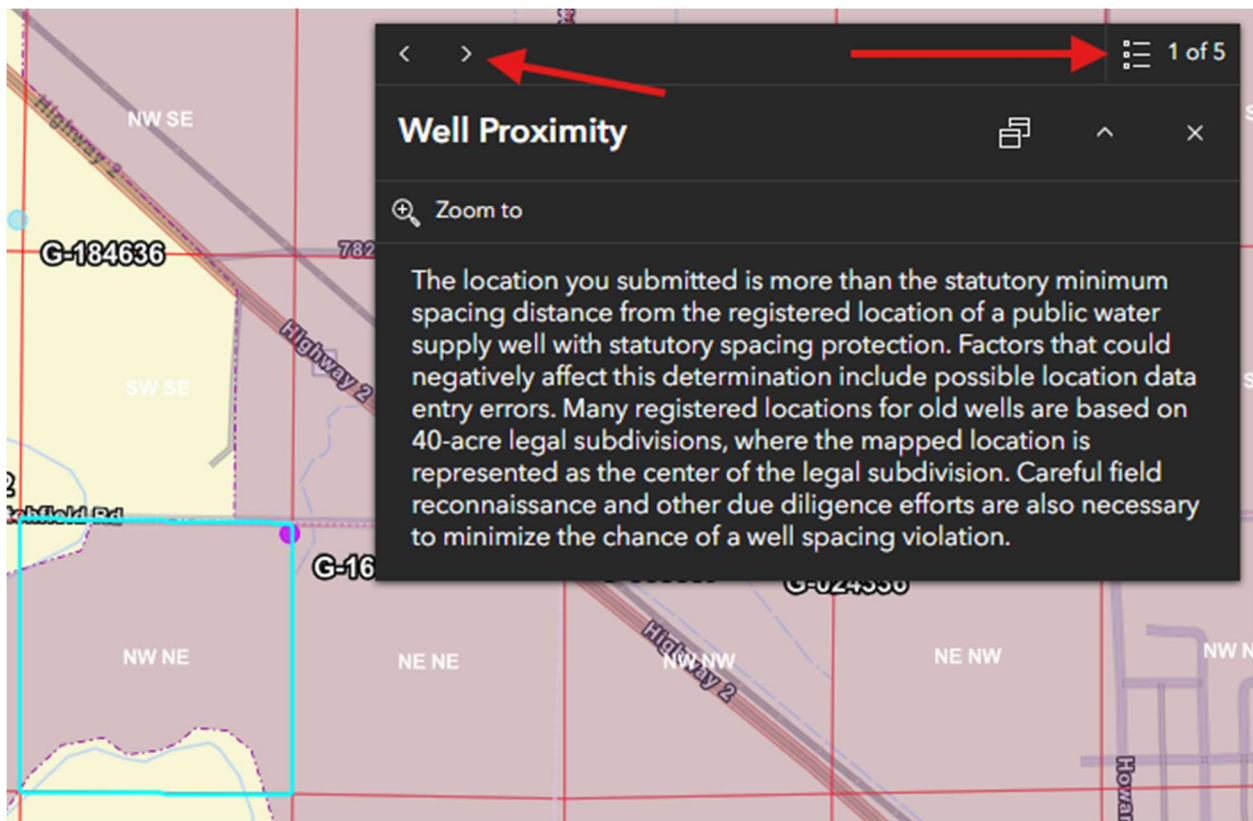
Many of the tools are the same as the previous map. However, one new behavior you will notice right away is that when you zoom into an area of interest and click on a ground location, a popup window will appear with one or more tiles of available information about the location you selected. The default tile will inform you whether there may be a public water supply well in the vicinity. This is in addition to the layer representing wellhead protection areas. If you also clicked on a colored dot representing a registered well location this same window will have information about that well, but the public well proximity tile

will be the default tile that is displayed. There is a back-and-forth navigation feature in this popup tile that enables you to go through the various tiles of information.

The popup navigation tool looks like this:



In the example below there are 5 tiles of information available and you would toggle through each screen to see what information is available about the location you selected.



There is a new way to copy geographic coordinates and paste the results into emails and other documents. The geographic coordinate tool is in the lower left-hand corner and the coordinates change as your cursor location moves across the map area. You can turn the tool on and off by clicking the small + symbol. Turn the tool on and then click on the map

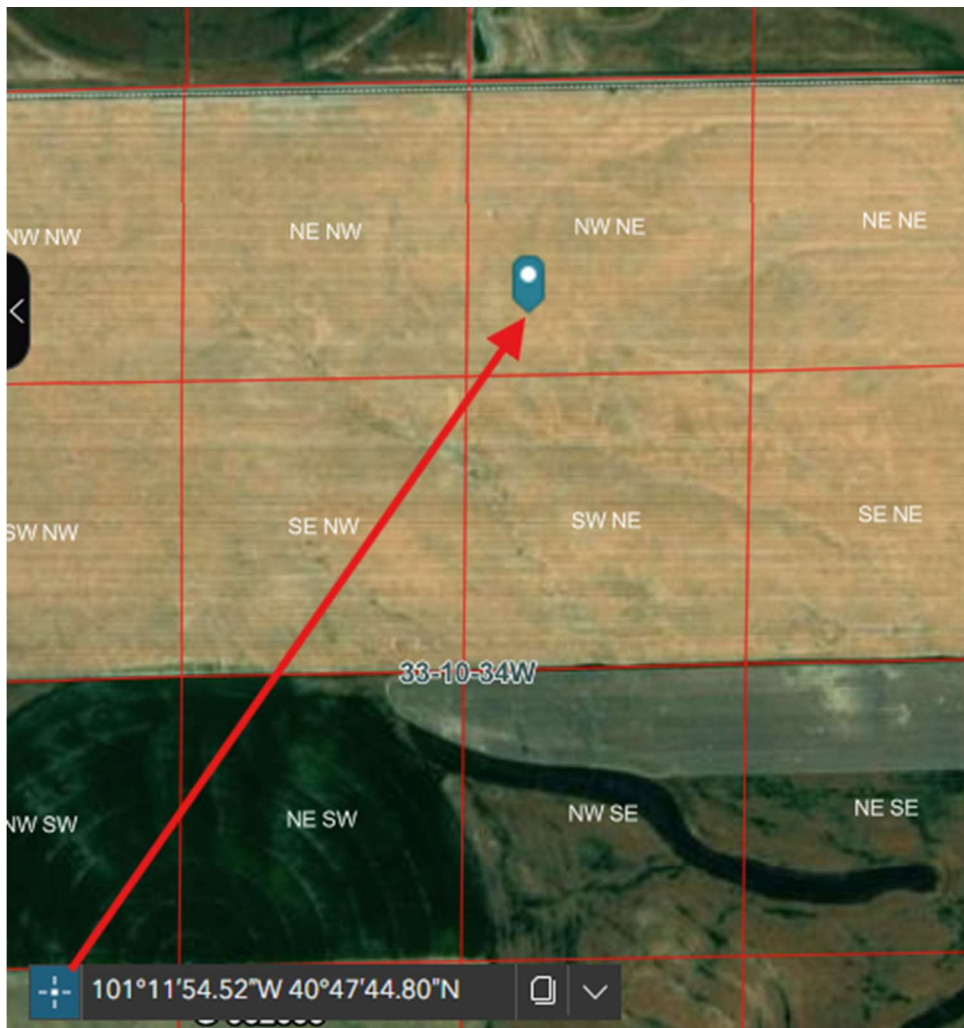
where you want coordinate information. After you click on the map at the location of



interest a map pin will show at the point where you clicked.



Next you can click on the 'Copy' tool and it will copy the data to the clipboard. You can paste the information in an email or document. Here are the coordinates in this example: 101°11'54.52"W 40°47'44.80"N . You have the option to choose degrees, minutes and decimal seconds or decimal degrees. When you are done you should click the + symbol again to turn off the tool and return your mouse cursor to normal function. Below is a larger screenshot of the tool and place clicked in the example:



Please explore the new interactive map to learn about the available features.