



State of Nebraska Substantial Damage Assessment Handbook **A Guide for Local Floodplain Administrators**

Version 1.4 - Revised June 30, 2025

This guide is produced by the Nebraska Department of Natural Resources' Floodplain Management Section and is partially supported by funding through a Cooperative Agreement with the Federal Emergency Management Agency. The contents do not necessarily reflect the view and policies of the federal government.

Revision	Report Date	Reason for Revision
0	March 1, 2021	Initial Issue
1	March 1, 2022	<ul style="list-style-type: none"> • Removed "2021" from cover; added effective date, version number, and revision date • Page numbers added to appendix items • Expiration date and jurisdiction prompts added to floodplain development permit form • Updated Appendix B: Contact Information; added interactive map hyperlink
2	June 30, 2023	<ul style="list-style-type: none"> • Updated cover art and document design • Updated Forward • Revised Appendices A and B • Inclusion of information about Disaster Recovery Reform Act Section 1206 • Integration of guidance with incident command system (ICS) logistics • Integration with Community Rating System (CRS) guidance "Developing a Substantial Damage Management Plan." • Provided further detail about appeal procedures in municipal and county jurisdictions • New resources added to references list • Revisions to mitigation section to incorporate information from 2022 State of Nebraska Flood Hazard Mitigation Plan • Added the Curbside Review Quick Assessment Tool
3	June 30, 2024	<ul style="list-style-type: none"> • Minor edits
4	June 30, 2025	<ul style="list-style-type: none"> • Updated State Model Floodplain Development Permit Application • New Substantial Damage Story Map • Updated Appendix B: Contact Information

Cover: Valley, NE, during March 2019 flooding. Photo by NeDNR.

State of Nebraska

Substantial Damage Assessment Handbook

A Guide for Local Floodplain Administrators

Version 1.4 - Revised June 30, 2025

This page intentionally left blank.

Contents

Abbreviations

Forward

Letter from the Nebraska NFIP Coordinator	ix
---	----

Introduction

Applicability.	xi
Regulatory Setting	xii

Chapter 1: Pre-Disaster Planning Actions

Knowing Hazard Zones	1
Creating a Substantial Damage Management Plan	2
Six-Step Planning Process	4
FEMA's Substantial Damage Estimator Tool.	4
Installing and Familiarizing Oneself with the SDE Tool	5
Developing a Property Record Inventory and Database	5
Gathering Information	6

Chapter 2: Post-Disaster Actions

Substantial Damage Assessment Process and Preparation	9
Declared Disasters and States of Emergency.	9
Keep the Public Informed	10
Step 1: Office Review and Prerequisite Preparations	11
Step 2: The Curbside Review	13
Step 3: Substantial Damage Inspections	14
Step 4: Processing Field Data	18
Step 5: Review and Issuance of Substantial Damage Determinations	20
Step 6: Permitting	22
Record-keeping.	25
Educating about Increased Cost of Compliance	26

Chapter 3: Protecting Your Community's Future

Mitigation	27
Federal Funding	28
Additional Federal, State, and Local Funding Sources	29

References

Appendices

Appendix A: Worksheets, Templates, and Handouts	33
<i>Checklist 1 - Pre/Post Disaster Planning</i>	<i>35</i>
<i>Checklist 2 - Field Preparations</i>	<i>39</i>
<i>Notice to Post on Structures</i>	<i>41</i>
<i>Press Release</i>	<i>43</i>
<i>NFIP and Substantial Damage / Substantial Improvement Handout</i>	<i>45</i>
<i>Included and Excluded Costs for Damage Repair Estimates</i>	<i>49</i>
<i>Right of Entry Form</i>	<i>51</i>
<i>Exterior Inspection Guide</i>	<i>53</i>
<i>Interior Inspection Guide</i>	<i>55</i>
<i>Percent Damage Estimation Tables</i>	<i>58</i>
<i>SDA Worksheet: Residential Worksheet</i>	<i>65</i>
<i>SDA Worksheet: Non-Residential / Commercial Worksheet</i>	<i>67</i>
<i>SD Assessment and Permit Requirement Decision Tree</i>	<i>69</i>
<i>Flood-Related Substantial Damage Determination Letter</i>	<i>71</i>
<i>Non-Flood Related Substantial Damage Determination Letter</i>	<i>73</i>
<i>Compliant Structure / Non-Substantial Damage Determination Letter</i>	<i>75</i>
<i>Contractor or Community Floodplain Damage / Improvement Cost Form</i>	<i>77</i>
<i>Nonstructural Floodplain Development Permit Application and Instructions ...</i>	<i>82</i>
<i>Structural Floodplain Development Permit Application and Instructions</i>	<i>86</i>
<i>Compliance Requirements in Flood Zone A</i>	<i>94</i>
Appendix B: Contact Information	95

NOTE: The entire handbook is available for download at Nebraska Department of Natural Resources' website: <https://dnr.nebraska.gov/floodplain/digital-desk-reference>

Abbreviations

BFE	Base Flood Elevation
CFM	Certified Floodplain Manager
CRS	Community Rating System
CSV	Comma-Separated Value
DFIRM	Standard Digital Flood Insurance Rate Map
EI	Engineer-in-Training / Engineering Intern
EM	Emergency Manager
ETJ	Extraterritorial Jurisdiction
FDP	Floodplain Development Permit
FPA	Floodplain Administrator
FEMA	Federal Emergency Management Agency
FIRM	Flood Insurance Rate Map
FMA	Flood Mitigation Assistance
FPA	Floodplain Administrator
GIS	Geographic Information System
GPS	Global Positioning System
HMGP	Hazard Mitigation Assistance Program
HVAC	Heating, Ventilation, and Air Conditioning
ICS	Incident Command Structure
LEOP	Local Emergency Operations Plan
NeDNR	Nebraska Department of Natural Resources
NEMA	Nebraska Emergency Management Agency
NFIP	National Flood Insurance Program
NRD	Natural Resources District
PDF	Portable Document Format
PE	Professional Engineer
PPE	Personal Protective Equipment
SDA	Substantial Damage Assessment

SDE	Substantial Damage Estimator
SDMP	Substantial Damage Management Plan
SFHA	Special Flood Hazard Area
SFHMP	State Flood Hazard Mitigation Plan
XML	Extensible Markup Language

Forward

Letter from the Nebraska NFIP Coordinator

Dear Floodplain Managers,

While we cannot predict when, where, or what disasters will impact our communities, we do know that disasters occur. We learned a lot from the 2019 floods and have developed the *Substantial Damage Assessment Handbook* based on your input.

Use this handbook to guide your actions before, during, and after a disaster impacts your community. Included in the handbook are lists and tools for specific actions that you can implement in your community today. Doing so will reduce the amount of work required of you after a disaster has occurred and aid in a smoother and quicker recovery process for the community overall.

Features in this handbook include:

- Diagrams and decision trees to help you visualize when and where the guidance applies
- A detailed Substantial Damage Assessment process
- Templates, reference tables, and checklists

Updates include:

- New Structural and Non-structural Floodplain Permit Application Models
- New Story Map covering the process of Substantial Damage Assessments and Determinations

We hope this disaster handbook will serve as a tool and resource today and beyond. Hard copies of the handbook can be requested by contacting this office. Additionally, all components of the handbook are available as individually downloadable files at Nebraska Department of Natural Resources' online Digital Desk Reference: <https://dnr.nebraska.gov/floodplain/digital-desk-reference>

Lastly, we are here to assist you. Please see our contact information at the end of the guide and do not hesitate to contact us should you have any questions or suggestions.

Sincerely,

A handwritten signature in black ink, appearing to read 'Elijah Kaufman', with a stylized flourish extending to the right.

Elijah Kaufman, CFM
State NFIP Coordinator, CRS Coordinator

This page intentionally left blank.

Introduction

Applicability

Your jurisdiction participates in the National Flood Insurance Program (NFIP), which allows your residents to purchase federal flood insurance and makes them eligible for various federal loan and grant programs, including federal disaster assistance programs. As a condition of joining the NFIP your jurisdiction has agreed to regulate development within the Special Flood Hazard Area (SFHA), including the repair and reconstruction of damaged buildings, no matter the type of disaster (flood, wildfire, wind, hail, etc.). Failure to carry out these requirements could lead to suspension of your jurisdiction from the NFIP and the denial of flood insurance and other federal benefits to your residents and community.

There are two key NFIP requirements you need to be aware of after a disaster:

- A floodplain development permit is required for all development within the SFHA, including repair and reconstruction.
- Buildings that are substantially damaged must be treated as new buildings and brought into compliance with your floodplain management ordinance.

To be substantially damaged means that the cost of restoring a disaster-damaged structure to its pre-disaster condition would be equal to or greater than 50% of the structure's pre-disaster market value. Substantially damaged buildings must be treated as new structures and brought into compliance with your ordinance. In most cases, this means either elevating the structure to one foot above the base flood elevation (BFE) or removing it from the SFHA.

It is your jurisdiction's legal responsibility to determine the extent of any damages to structures in any SFHA within your jurisdiction, including your extraterritorial jurisdiction (ETJ). The Substantial Damage Assessment (SDA) is different than the damage assessments being completed by other agencies. Your jurisdiction's SDA process must include: identification of a pre-event fair market valuation for each structure, visual inspection of the damaged properties, and recordation of the extent of physical damage to the structure.

The Substantial Damage Assessment Handbook has been specifically developed for Nebraska's Floodplain Managers, for both urban and rural settings. Please review this guide and use it to prepare yourself and others in advance of disasters occurring within your jurisdiction. This handbook includes guidance and resources applicable preceding, during, and after a disaster has occurred.

While the contents have been tailored to the State of Nebraska's minimum standards for floodplain management, your community may have adopted higher standards, procedures, and/or policies that are specific to your local jurisdiction. These higher standards may include but are not limited to: cumulative substantial damage, higher freeboards, and best available data. Please review your floodplain management ordinance in order to know and understand where your jurisdiction's higher standards fit within this guidance.

Community Rating System. All NFIP-participating communities must adopt and enforce floodplain management ordinances that meet or exceed the minimum standards of the NFIP as found in 44 CFR §60.3, including substantial damage and substantial improvements. Credit is available for communities that participate in CRS and have a written plan of procedures to address substantial damage issues in their jurisdictions. This new credit was introduced with the release of the 2021 Addendum to the 2017 CRS Coordinator's Manual.

The maximum total credit a community may receive for a substantial damage management plan (SDMP) under CRS element "SDP" is 140 points, and the sum of three components:

- 40 points are available for the development of a substantial damage management plan. This plan must meet the seven credit criteria described in Section 512.d of the 2021 Addendum to the 2017 CRS Coordinator's Manual.
- 50 additional points are available if the community has pre-populated FEMA's Substantial Damage Estimator (SDE) tool with property information, in addition to having created a written plan.
- 50 points are also available if the community considers pre-event mitigation alternatives for properties with SD potential, in addition to having created a written plan.

Substantial damage management planning items and procedures requisite for obtaining SDP credit are flagged with this symbol: **CRS** Consult the Addendum to the 2017 CRS Coordinator's Manual for the full details of the SDMP requirements. Resources may be found on FEMA's website at: www.fema.gov/floodplain-management/community-rating-system

Resources. This guide is a compilation of several resources. Information has been assembled from FEMA resources and training sessions, Nebraska Department of Natural Resources staff and documents, community members, and resources developed by regional neighbors. For access to in-depth reference guides produced by FEMA, please go to the references section of this handbook.

Regulatory Setting

The guidance contained within this document is in accordance with the following current federal and state rules and regulations governing local flood hazards:

- Criteria for Land Management and Use, 44 CFR. §60
- General Provisions, 44 CFR. §59
- Rules and Regulations Concerning Minimum Standards for Floodplain Management Programs, 455 Neb. Admin. Code §1
- Flood Plain, Neb. Rev. Stat. §31-10
- Cities of the First-Class Flood Control, Neb. Rev. Stat. §16-6, 106
- Sanitary Districts for Cities 100,000 to 300,000, Neb. Rev. Stat. §§31-508 & 31-509
- Sanitary Districts for Cities 100,000 to 300,000, Neb. Rev. Stat. §§31-515 & 31-516

Chapter 1: Pre-Disaster Planning Actions

Knowing Hazard Zones

As the floodplain administrator it is important to know the boundaries of the regulatory Special Flood Hazard Area (SFHA) within your jurisdiction. This is the area in which your floodplain management ordinance applies, and the area in which you will need to perform substantial damage assessments (SDA) and provide a substantial damage determination to the property owners. The SDA process is discussed fully in Chapter 2.

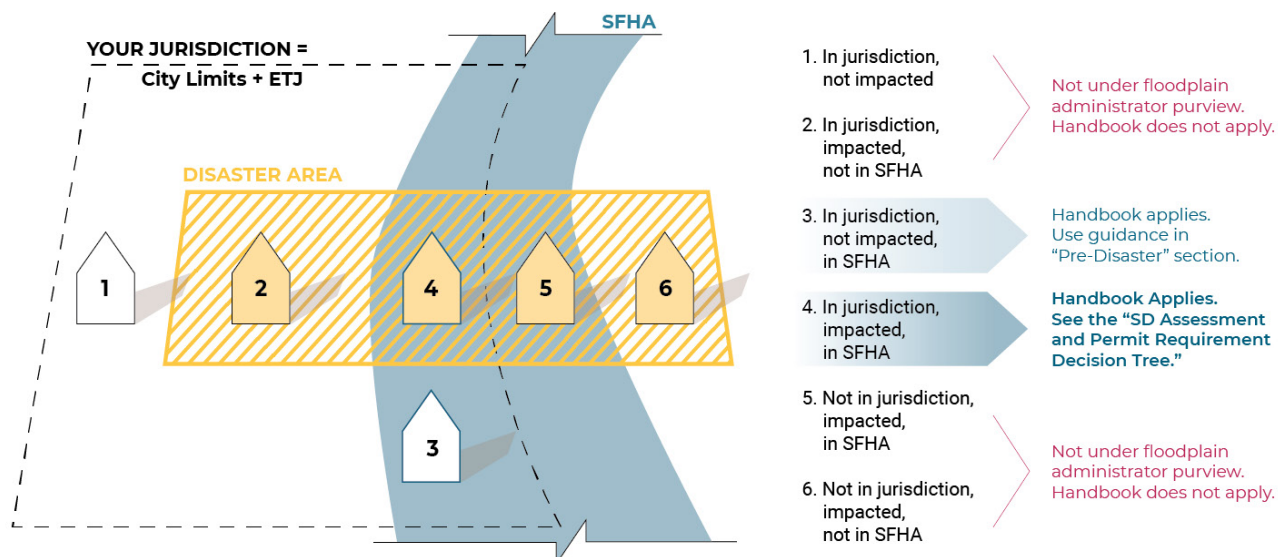
In order to start the post disaster recovery process, you will need to be able to answer the following questions:

- Where is the SFHA located?
- What structures exist in the SFHA?

If you are not able to answer these questions, you can search for your jurisdiction on **NeDNR's Interactive Floodplain Map**. The interactive map will show you the location of the floodplain in relation to the properties in your community. If you would like additional information, or have questions about your flood risk, reach out to NeDNR's Floodplain Management Section via the contact information included in Appendix B.

You and other community officials should educate your jurisdiction's residents on their flood risk and measures that can be taken to protect their assets. Communication can include instruction on how to purchase flood insurance, the importance of anchoring potentially buoyant or easily-washed away objects such as fuel tanks and outbuildings; using the flood risk product viewer on NeDNR's website, capping wellheads to prevent pollution; and protecting your home from flooding.

Figure 1. Applicability of Substantial Damage Assessment Handbook Guidance



Creating a Substantial Damage Management Plan CRS

Prior to a disaster occurring, develop a general plan or framework for how to move into action in time of disaster. This *substantial damage management plan* (SDMP) should be flexible enough that it can be fine-tuned or modified per the specific characteristics of any given disaster. Be sure to include county emergency managers, the local fire chief, and other emergency operation agencies in your area in the planning process. This plan is specific to your floodplain management duties. It is not to be confused with an incident command system (ICS), yet should complement the ICS. CRS and non-CRS communities are strongly encouraged to create a SDMP. The plan should contain:

- Definitions of substantial damage, substantial improvement, and cumulative substantial improvement, if applicable. CRS
- Meeting locations.
- Team members and responsibilities.
- Emergency or critical routes.
- Known stockpiles of emergency materials, such as: fuel supplies, sandbags, generators, food banks.
- List of state agency contacts and contacts in neighboring jurisdictions and any applicable mutual aid agreements, such as: police chiefs, fire chiefs, NEMA, NeDNR, floodplain administrators, zoning officials, council members.
- Plan for notification of the public and local officials.
- List of data sources and locations, such as: maps, permit files, tax records.
- Substantial damage inspection resources, such as: this handbook, FEMA guides, and fieldwork tools.
- List of just-in-time training resources.

Definitions. The plan must be developed using a substantial damage definition that meets or exceeds NFIP definition of substantial damage as defined in 44 CFR 59.1. For CRS communities that are receiving credit for cumulative substantial improvement or for a lower threshold for substantial improvement, then these definitions must also be referenced.

Meeting locations. Prior to going out into the community, team members should be briefed about the current situation and what they might expect in the field. Establish primary and back up locations at which to meet and operate. If a disaster has been declared, an incident command system (ICS) may be activated and daily briefings will occur. It is recommended that the team conducting the substantial damage assessments meet in the same location.

Team members and responsibilities. CRS The floodplain administrator is responsible for ensuring that substantial damage assessments are made after a disaster, however other staff and departments may need to be involved with post-disaster activities. Assemble a team that includes:

- Department or office responsible for issuing permits for post-disaster repairs.
- Department or office responsible for tracking cumulative substantial improvement, if applicable.
- Additional personnel for completing the substantial damage work after a major flood or event.

Consider including maintenance, fire, police, public works, and roads personnel as a resource. These individuals likely know the lay of the community very well and can be effective in mapping and assessing damage. Small communities might also consider teaming up with adjacent communities for the purpose of fulfilling post disaster duties. Also be aware of assistance from FEMA post-disaster resources and State NFIP Coordinating office.

Assign responsibilities to the team members. These responsibilities include but are not limited to: pre-deployment briefing, substantial damage inspections, public notice and media release writing and distribution, Substantial Damage Estimator (SDE) Tool data processing, quality assurance review of substantial damage inspections and determinations, and permit review.

Emergency routes. In addition to evacuation routes, know which routes may be threatened by flood waters and plan for alternatives. The local emergency operations plan (LEOP) should contain such information and can be integrated in your SDA plan. Consult with your local emergency manager (EM) for identified emergency response routes.

Agency and neighboring jurisdiction contacts. Meet the people critical during a disaster before the disaster occurs. Maintain up-to-date contact information, such as: physical addresses, mobile telephone numbers, and email addresses. Be aware of any mutual aid agreements or memorandums of understanding in place with other jurisdictions, as these may be a useful resource post disaster.

Plan for notification. Have draft notices available for posting in the community and for distribution to local media and know who is going to print and distribute them. Know how to contact area television and radio stations as well as any local newspapers. If a disaster has been declared and ICS activated, all notifications should go out through the Public Information Officer (PIO).

Substantial Damage inspection resources. Have pre-assembled tools you and your inspection teams will need for field work. Use “Checklist 2 – Field Preparations” in Appendix A to help you prepare your field supplies. Such items include:

- Copies of maps, damage assessment worksheets, property owner consent forms, and notices.
- Digital cameras with extra memory cards and/or extra batteries.
- Small dry erase boards and markers.
- High visibility vests, hardhats, safety glasses, gloves, and other appropriate personal protective equipment.
- Tape measures.
- Flashlights.
- Notepads, clip boards, and pens.
- GPS devices that can store points in decimal degrees.

List of just-in-time training resources. Just-in-Time Training (JITT) is training that can be accessed immediately following a disaster when it is most needed. Create a list of JITT resources such as recordings of virtual trainings. NeDNR has recordings of the substantial damage assessment process on its YouTube channel. www.youtube.com/@nebraskadepartmentofnatura529/playlists

Six-Step Planning Process **CRS**

The Addendum to the 2017 CRS Coordinator's Manual ("Addendum") prescribes a six-step planning process for the SDMP to receive credit for it. All steps are required, yet steps 2-5 need not be completed in that order. The general process is as follows; more details may be found in the Addendum:

1. Assess the community's vulnerability to substantial damage by reviewing all structures in the SFHA to determine those that have greatest potential to be substantially damaged. Within this step are multiple components, that are included in the "Developing a Property Record Inventory and Database" and the Addendum.
2. Identify the team that will manage the substantial damage assessment process after a disaster event. See the "Creating a Substantial Damage Management Plan" for more information about who should be included in this team.
3. Identify the tasks that must be completed as part of the substantial damage assessment process. A CRS plan must include:
 - Post-event coordination and communication efforts,
 - Damage estimate and substantial damage determination procedures, and
 - Post-substantial damage determination procedures for compliance.
4. Build a property database for substantial damage estimates. Review the "Developing a Property Record Inventory and Database" and subsequent sections to learn more about FEMA's Substantial Damage Estimator tool.
5. Identify actions the community can take to address potential substantial damage. The community must commit to at least one educational action that informs residents about substantial damage, substantial improvement, and the requirements of the NFIP and CRS. The Addendum includes examples.
6. Develop a system for updating and maintaining the substantial damage management plan. Required components include:
 - An annual evaluation report.
 - Distribution of plan and report amongst elected officials.
 - Plan update process and schedule.
 - Actions taken to comply with the Privacy Act or any state or community privacy requirements.

Further details of the six steps and subcomponents such as the annual evaluation report are found within the Addendum. Non-CRS communities need not worry about the process yet may follow it if they choose.

FEMA's Substantial Damage Estimator Tool

FEMA developed the Substantial Damage Estimator Tool, a stand-alone computer program, to assist state and local officials in estimating substantial damage for residential and non-residential structures in accordance with the requirements of the NFIP. The software can be used to assess flood, wind, wildfire, and other forms of damage. It allows community officials with limited appraisal or construction backgrounds to develop reasonable estimates of structure values and damage in accordance with the NFIP requirements. It also helps communities provide timely substantial damage determinations so reconstruction can begin quickly following a disaster. Only structures in the SFHA are required to be assessed for substantial damage.

Installing and Familiarizing Oneself with the SDE Tool

The SDE Tool is based on the concept of using damage percentage estimates for individual structure elements to determine whether the structure as a whole is substantially damaged. Using SDE will save you time and research in a busy post-disaster work environment. The SDE allows you to set up property records in advance of a disaster. This will save time and prevent errors in the post-disaster efforts. The program supports the preparation of data and calculation of substantial damage determinations in a formal, consistent, and organized manner. Time-saving aspects include:

- View/Search: the ability to search all records based on selected filters.
- Default Data & Bulk Editor: the ability to create or edit default values that can be quickly applied to many property and assessment records.
- Import/Export: the ability to import structure data from non-SDE databases.

The latest version of the SDE Tool software can be downloaded directly from the FEMA web page, **"Building Science – Multi-Hazard Publications."** To install the software, first select the "Download Document" link located below "FEMA P-784, Substantial Damage Estimator (SDE) Tool" to download a zipped folder including the SDE 3.0 Tool exe file. Then follow the step-by-step installation guide and the reference "SDE Read Me – SDE 3.0 Tool Installation Guide (2017)." You may also refer to NeDNR's YouTube channel for SDE Tool instruction: www.youtube.com/@nebraskadepartmentofnatura529/playlists.

Please note that only one copy of the SDE Tool may be installed on a computer at a time, and before installing the latest version, you must export any existing SDE data that you would like to save from previous SDE versions. Although it is not required, FEMA recommends that users uninstall previous versions of the SDE Tool from the host computer using the Windows add or remove programs function to avoid confusion between past and current SDE inventories. Installation steps may vary depending on the host computer setup and the utility program installed on the computer to unzip the SDE Tool installation file.

CRS

Developing a Property Record Inventory and Database

A jurisdiction can save considerable post-disaster time and effort by assembling SFHA property records before a disaster occurs. Using the SDE Tool, records should be made for each structure located within the SFHA. The SDE Tool offers multiple ways to create property records in advance. You can create each property record one by one, or in batches by using the enterprise import function with any of the following: Excel spreadsheet, Access database, CSV file, or an XML file. More information regarding importing data is available in Section 3 of FEMA's P-784 "Substantial Damage Estimator (SDE) User Manual and Field Workbook."

The 2017 Addendum to the CRS Coordinator's Manual requires that a vulnerability assessment be completed as part of the substantial damage management plan's development. For CRS credit, create a list and map of SFHA properties that include buildings that have the potential to be substantially damaged. These properties:

- Have structures that are below—or are suspected to be below—the BFE.
- Are within a repetitive loss area.

- Have previous substantial damage assessments.
- Have structures that could meet the cumulative substantial improvement definition, if applicable.

Include a general description of the buildings that are on the list. This description should include details such as the proportion of residential and non-residential structures, and type, such as multi-family or single-family. Provide a description of any other building or flood factors that the community identified as part of the assessment process. Perhaps the assessment is informed by a community-determined flood zone not shown on the FIRM, or the community utilized data from its cumulative damage and improvement tracking efforts.

In addition to the above, the vulnerability assessment must include definitions of substantial damage and substantial improvement, and a description of substantial damage and substantial improvement determinations previously made by the community.

Gathering Information

Various data resources can be assembled prior to a disaster, saving time and stress after a disaster has occurred. The following types of information will be most relevant to your work. Verify that you are gathering the most current versions available.

Base Cost. This value represents the typical construction cost per square foot. Base cost may fluctuate from year to year due to larger economic trends. Consult with area building experts and residential cost-estimating guides for base cost data. Local building permit data for new construction, repairs, or remodeling may also be used as source data for determining an appropriate base cost.

Geographic Adjustment. This is a factor which modifies the base cost. When using a locally developed base cost, use a geography adjustment factor of 1. More information about geographic adjustment and base cost values can be found in Sections 3 and 8 of P-784 “Substantial Damage Estimator (SDE) User Manual and Field Workbook.”

Tax Data. SDE Tool is populated with various types of information necessary to create a complete property record. Photographs and tax data are the most helpful. The floodplain administrator should also know the locations of tax parcels and structures on Flood Insurance Rate Maps (FIRM). If available in a usable format, assemble tax data and place a hard-copy of key tax data in individual folders organized by property address.

Table 1. “Potential Tax Data Used in the SDE Tool” lists several types of data that can be acquired from local tax records and which may be input into the SDE Tool. Numbers such as structure dimensions and habitable area may be *approximate*.

Photographs. Digital photographs should be taken of structures and houses to fully describe scale and condition prior to being damaged by disaster. Photos of houses should be taken such that two sides are visible, and two photos per structure obtained to allow a view of nearly all sides. The purpose of capturing two photographs per structure is to confidently identify the structure in the SFHA, and to provide a basis for future regulatory needs.

Regulatory needs include identifying substantial improvements, as well as substantial damage and unpermitted actions. For this reason, it is recommended that these photos be taken on a regular basis to keep them current.

There are no specific SDE requirements for the size and resolution of digital photographs attached to SDE assessments. Be advised that the larger the digital files and the more photographs attached per inspection, the larger the SDE database becomes and the slower the SDE Tool may operate.

Inspectors should try to frame the photograph so that the structure fills the majority of the view and is readily recognizable to the structure owner or anyone else who views the structure from the point where the photograph was taken. Taking photographs from curbside or the driveway of the structure is recommended, especially if the mailbox with address numbers is visible, unless the structure is set too far back from the street for a clear photograph. Be wary of taking photographs that are too dark, washed out by sunlight, or obscured by dense foliage. These factors may render a structure indistinguishable from nearby similar structures.

Table 1. Potential Tax Data Used in the SDE Tool

Type	Data
Owner and Structure Location	<ul style="list-style-type: none"> Owner’s first and last name Owner’s telephone number Community name Zip code Official structure address Owner’s mailing address if different from structure address County name (for multiple communities in the same county) Lot and parcel number
Structure Information	<ul style="list-style-type: none"> Date of construction Date of improvements requiring building permits Number of dwelling units on the property Habitable area (in square feet) per structure Structure use (e.g., single-family home, manufactured housing, commercial use, public building) Structure style (number of stories, with or without basement) Construction type (e.g., wood frame, masonry) Foundation type Exterior material type (e.g., vinyl siding, brick veneer) Attached or detached garage Other structures on the same lot
Assessed Building Value	<ul style="list-style-type: none"> Adjusted tax assessed structure value Date of last tax adjustment (to verify validity of the adjusted tax assessed value)

Table 1 is adapted from the table found on page 8-2 of FEMA P-784, Substantial Damage Estimator (SDE) User Manual and Field Workbook.

To reduce confusion as to which location a photo is depicting, consider using a small dry-erase board annotated with the following information and held in the lower corner of a structure photograph:

- Street number,
- Street name and suffix,
- Team number, and
- Photo date.

The previous recommendations also apply to photos taken *after a disaster*. More information regarding the use of photos in the SDE Tool can be found in the FEMA guide P-784 “Substantial Damage Estimator Best Practices.”

Maps. As part of your field preparations, be sure to have multiple copies of the most accurate maps available. The following map types will be of use to you:

- Current Regulatory Floodplain Maps: Flood Hazard Boundary Map (FHBM), and FIRM.
- Best Available Data Maps: Flood Recovery Maps, or NeDNR Flood Awareness Area Maps.
- Assessor maps.
- Address maps.
- Street maps.
- GPS way-point files.

Enough copies of maps should be available for all field and office staff. Be sure to confirm that the jurisdictional boundaries depicted in community maps are correct. Field and office staff should be able to mark on the maps which structures have been inspected to help ensure that structures are neither omitted nor inspected twice.

Appendix A begins with “Checklist 1 – Pre/Post Disaster Planning,” a comprehensive list to help you make sure all appropriate actions are being taken. This list should be reviewed and updated on a regular basis. The first 17 items should be completed prior to a disaster occurring.

Chapter 2: Post-Disaster Actions

Substantial Damage Assessment Process and Preparation

Whenever a pre-FIRM or other non-flood code compliant structure located in a jurisdiction's SFHA is damaged from any source (such as flood, fire, seismic activity, wind, or human activity), the jurisdiction must determine to what percentage the structure is damaged. This is called a *substantial damage determination*. The multi-step process a floodplain administrator follows to produce a substantial damage determination is referred to as the *substantial damage assessment* (SDA) in this handbook. A structure in a jurisdiction's SFHA that has sustained damage greater than or equal to 50% of its pre-disaster market value is *substantially damaged* and needs to be treated as a new structure that must be brought into compliance with the local floodplain management ordinance.

Substantial damage determinations can be difficult. This handbook describes approaches and tools that should take some of the guesswork out of evaluating damage, ensuring both efficiency of process and consistency in results. This chapter breaks down the SDA process into actionable steps. The previous chapter introduced FEMA's Substantial Damage Estimator 3.0 (SDE) software program that is available for free to help make substantial damage determinations.

The SDA process includes the following steps, each of which are expanded upon in the following sections:

- Step 1: Office review and prerequisite preparations.
- Step 2: Curbside review.
- Step 3: Substantial damage inspections, comprising:
 - Developing the substantial damage inspection schedule.
 - Notifying authorities of inspection plans.
 - Providing training for inspectors via pilot inspections.
 - Conducting substantial damage inspections.
- Step 4: Processing field data.
- Step 5: Review and issuance of substantial damage determinations.
- Step 6: Floodplain development permitting.

Declared Disasters and States of Emergency

If a state of emergency is proclaimed or a federal disaster declared for a disaster event, then various emergency management activities will be activated. State, city, village, county, and interjurisdictional emergency management organizations and emergency operations plans applicable to the disaster area will be deployed. In such times, an incident command system may be used by public agencies to manage the emergency. An Incident Commander will be designated, and other positions filled within the ICS depending on the scope of the disaster. Public access to and from the disaster area will be limited to those who have the appropriate identification and credentials. It is important that all substantial damage

assessment processes be coordinated with the ICS, such as notifying Safety and Liaison Officers of inspection plans, and coordinating outreach through the PIO. Further aspects of ICS coordination are noted within the SDA process.

2

NOTE: The Disaster Recovery Reform Act of 2018 ("DRRA Section 1206") authorized FEMA to reimburse communities for time spent and expenses incurred administering and enforcing building code and floodplain management programs if your community is in a Federally Declared Disaster Area. The following items may be reimbursable through Public Assistance funding as a result of DRRA 1206:

- Hiring temporary workers, contractors, mutual aid teams, and overtime for budgeted employees to support substantial damage assessments and determinations, and notifying property owners.
- Travel costs and accommodations for extra hires or contracted support.
- Vehicle usage for conducting SD assessments.
- Office supplies and electronics (computers, mobile phones) needed for conducting SD assessments.
- Personal protective equipment.
- Postage and outreach costs.

To learn more about DRRA Section 1206, review the Frequently Asked Questions published by FEMA and included in this document's references section.

Keep the Public Informed

Local officials should recognize that citizens will have questions about the recovery process and how to obtain inspections and permits. Floodplain administrators should brief elected officials as soon as possible after an event on the community's floodplain management responsibilities. Officials should be prepared to answer questions throughout the post-disaster recovery phase. Distributing substantial damage determinations may generate several questions.

It is very important that information about the local ordinance requirements for obtaining permits for repairs and rebuilding are posted as early as possible. Use as many avenues as possible to disseminate the information. You can make social media posts, distribute signs or fliers around your community, place notices on damaged structures, put up door hangers, publish press releases, and mail letters to individual owners. Educate yourself on the substantial damage assessment process, reconstruction methods, and available mitigation programs. Have a blank *floodplain development permit application* in hand and ready to distribute. Keep it simple. Often community members will want to begin repairs on damaged buildings as soon as possible after a disaster. Be prepared for residents who are angry that they cannot start immediate repairs. Template letters, notices, and a model floodplain development permit application are available in Appendix A.

In addition to the resources provided in Appendix A, jurisdictions should consider developing and distributing guidance to citizens, property owners, contractors, and design professionals regarding:

- The importance of having damaged structures inspected before repair work is started.
- Activities that require a permit.
- Activities that do not require a permit.
- The floodplain management requirements that apply when structures in the SFHA are substantially damaged and what it means to bring those structures into compliance.
- The availability and benefits of Increased Cost of Compliance (ICC) coverage that is part of the NFIP flood insurance policies for structures in mapped SFHAs.
- The importance of hiring licensed contractors and cautions about fraudulent or unlicensed entities that may take advantage of disaster victims.
- The importance of including damage-reduction measures to minimize future flood damage, even if such measures are not required by the jurisdiction's floodplain management ordinance.

This guidance need not only be distributed in time of disaster. NeDNR recommends that guidance be distributed to SFHA property owners on an annual basis.

Step 1: Office Review and Prerequisite Preparations

Prior to going into the field, use community specific maps, FIRMs, any other adopted floodplain maps, and permit records to identify the general limits of the area in which you will need to conduct substantial damage inspections. The purpose of this step is to identify areas that need to be evaluated by *curbside review* (Step 2) *before* completing the inspection. Step 1 is also used to identify properties not subject to the substantial damage process. If a structure meets any of these criteria, then it need not be inspected for substantial damage:

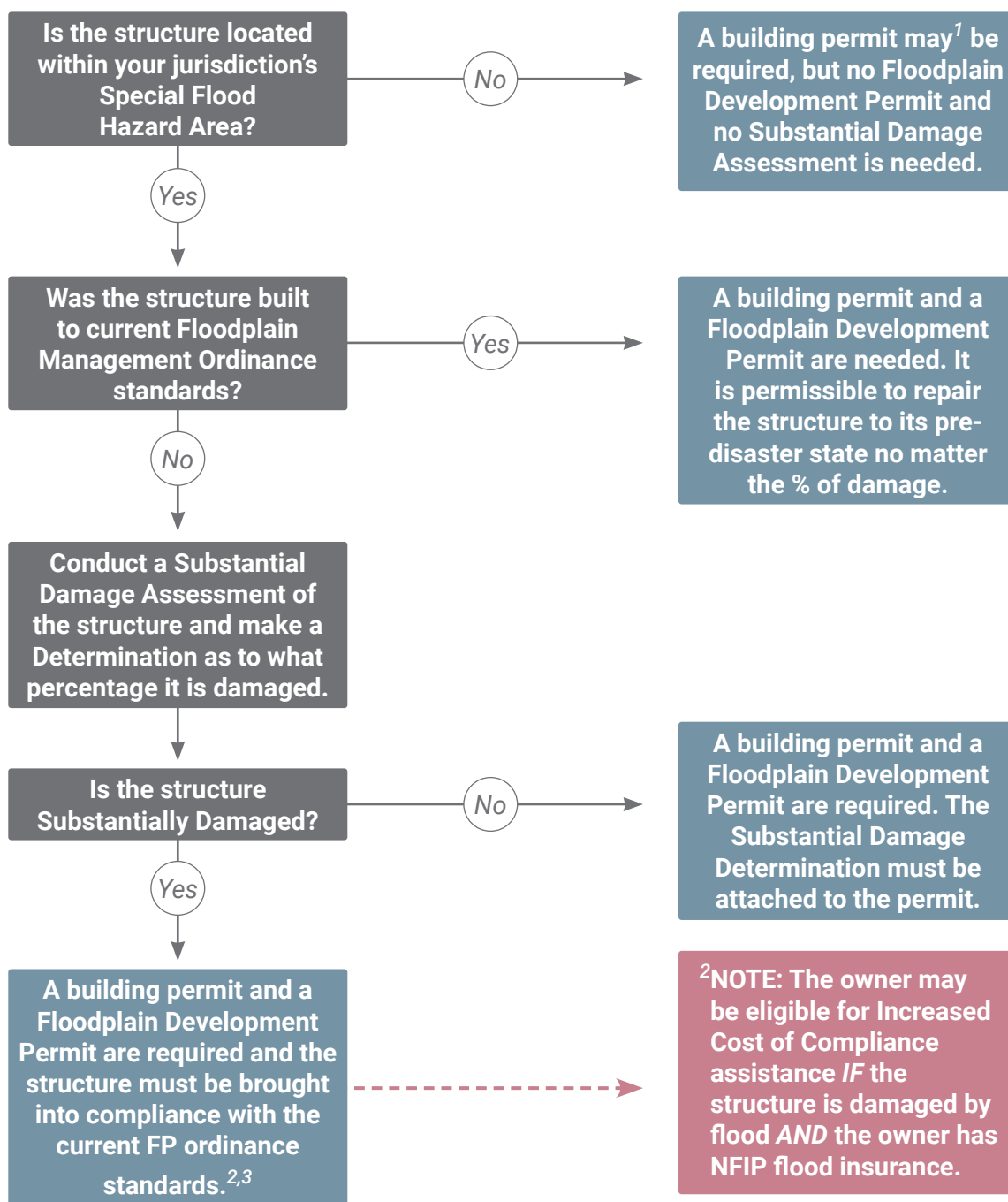
1. *Areas of your SFHA that were not impacted by the disaster.*
2. *Damaged structures located outside of the SFHA.* Only structures located within your regulatory floodplain are subject to the substantial damage process detailed in this handbook.
3. *Damaged structures that were built in compliance with your current floodplain management ordinance.* The purpose of the SDA is to identify which structures need to be brought into compliance with your local ordinance. If the structure is already built to compliance, then there is no need to conduct a SDA.

Please note that in the case of flood, the actual limits of the flood event often will *not* coincide with the mapped SFHA. Structures outside the SFHA may be damaged by flood waters. Such structures which are impacted by flood but are not within the SFHA are *not* subject to floodplain management regulations and the associated SDA process.

To guide you in identifying which structures require a SDA and permit requirements, NeDNR has developed Figure 2: "SDA and Permit Requirement Decision Tree."

Figure 2: SDA and Permit Requirement Decision Tree:

START:



¹Not all jurisdictions require building permits.

²NOTE: The owner may be eligible for Increased Cost of Compliance assistance IF the structure is damaged by flood AND the owner has NFIP flood insurance.

³NOTE: Reconstruction of a substantially damaged structure is new construction. No new habitable structures are permitted in the Floodway.

Appendix A begins with “Checklist 1 – Pre/Post Disaster Planning,” a comprehensive list to help you verify all appropriate actions are being taken in the substantial damage assessment process. Checklist items 1 through 17 were discussed in the previous chapter. **If not yet completed, these items 1 through 17 will need to be done before continuing in the process of creating substantial damage determinations outlined in the following sections.**

Step 2: The Curbside Review

A coordinated and systematic approach to field work is necessary to ensure consistency in SD determinations and overall service to your community. Inspectors need to begin field work as soon as possible after the damage event, as this will allow local officials to begin making SD determinations and issuing building permits as quickly as possible. In most cases, field work should begin within two weeks of the disaster event occurring. By quickly producing SD determinations, local officials will prevent owners from initiating repairs without a permit or without waiting for the SD data to be collected. Additionally, local officials will avoid having to determine whether any new construction they observe constitutes damage repairs or general improvements.

To build your SD inspection strategy, conduct a Curbside Review of the area identified in Step 1. To complete a curbside review, drive through damaged areas of SFHA and determine the scope of disaster impact. Identify the quantity of structures impacted, the structure types, their approximate levels of damage, any health and safety issues, and any access issues. This is not an individual structure review; it is a scoping review of the community’s damage that will thus provide a broad characterization of the affected areas. During this initial screening, collect the following flood and structure information:

- Depth of flooding above the first floor (if applicable).
- Duration of flooding (if applicable).
- Count the total number of damaged structures.
- Approximate the degree of damage to structures (this may be based on the depth and duration of flooding above the first floor).
- Refine the boundaries of area(s) needing field inspections.
- Take photos as needed to help with prioritization of field work once returned to the office.

If a disaster has been declared and an ICS activated, check-in with the Incident Commander before entering the disaster area or performing any reviews. Ensure that you and anyone on the SDA team carry proper badges or credentials for entering the disaster area. Lastly, ensure that you and the SDA team check out when leaving the disaster area.

The data collected in your curbside review will help you define the scope of the field inspections (Step 3) and the number of days that are needed to complete the substantial damage inspections for the inventory area. For planning purposes, use the following criteria to estimate damage based on rapid, visual evaluations from the exterior of the structures:

- **25% or less damage:** If the interior flood height was one foot or less above the lowest floor; the flood duration was less than one day; the floodwater velocities relatively low (less than five feet per second); and, the structure and its foundation, exterior walls, and roof are in good condition, then the damage to the structure is most likely around 25% or less.

- **75% or more damage:** If there is obvious exterior damage to the foundation, exterior walls, or roof, then a structure is likely to be substantially damaged. A structure that has shifted off the foundation or has leaning walls has experienced significant structural damage.

Please note that due to the location of utilities and the structural design in *manufactured housing*, substantial damage and total loss may occur with flood depths of six inches or more.

During the curbside review, you may also identify areas where representative inspections may be appropriate. Representative inspections may be fitting in developments where the structures share several similar characteristics, such as:

- General structure (square footage, materials, foundation type, number of stories).
- Construction quality.
- Flat or similar topography.
- Lowest floor elevation (± 0.5 foot).
- Flood depth above lowest floor (± 0.5 foot).
- Flood conditions.

Based on the above information, the SDA area map may be refined, and priority areas identified. This map should differentiate areas with structures that are damaged to 25% or more from areas that are likely *less than 25%* damaged, and areas where *representative inspections* may be appropriate. Allow the most time for the inspection of structures that are likely damaged 25% or more.

To aid in the speed and consistency of the curbside review process after a flooding disaster, consider using the Curbside Review Quick Assessment Tool. This tool is not intended to replace a substantial damage inspection. It is designed to be used as a screening tool so that the property owner may be notified as soon as possible as to the potential status of their property and so a substantial damage inspection schedule may be developed from the best information available.

Step 3: Substantial Damage Inspections

Substantial damage inspections of affected SFHA properties must be conducted after a disaster. The focus of the SD Inspections should be to collect accurate data as quickly as possible to complete an SD determination. In order to make this happen, it is important to do the prep work before leaving the office. This includes completing Step 1 and Step 2 in previous sections before advancing to the following steps.

3.1 Develop the Substantial Damage Inspection schedule

Develop a schedule of inspections identifying neighborhoods and target dates by which inspections in those areas should be completed. You may calculate the number of days it will take to conduct the SDA based on the number of structures to inspect and the number of available inspectors, using two inspectors per team:

- Residential inspections can be completed at a rate of 20 to 35 per day for urban areas where the inspectors can walk between structures.
- Non-residential structure inspections can be completed at a rate of 3 to 15 per day, depending on the size, location, complexity, and uses of the structures.

Your inspection schedule will necessarily be informed by the accessibility of inspection areas. Be aware if there are issues such as inundation, downed power lines, cleanup activities, damaged roads, or required permission/appointments inhibiting access to properties. Additionally, some areas may be higher priority than others. You should consider the following factors when determining which areas to prioritize for inspection:

- Areas with little to no apparent damage, allowing permits for minor repairs to be issued quickly.
- Areas where debris and contents have been removed from the structures, allowing for faster inspections.
- Areas with critical facilities that may be a community priority for starting repairs.
- Damage areas with a high density of development and many structures.
- Areas with temporary (flooding, debris, downed power lines) and permanent (gated communities, industrial sites) access issues that require additional time to resolve.

Revisit and revise the inspection schedule based on progress made by inspection teams and as changes to access conditions allow.

3.2 Notify Authorities of Inspection Plans

Prior to launching the inspections, be sure to notify the police and other local officials of the schedules and coordinate accordingly:

- Issue a public announcement or press release regarding the inspections. Provide the reasons for the inspections, the areas that will be inventoried, the inspection process, hours of operation, the inspector identification procedure, and a community contact. An example of public notification is included in Appendix A. If a disaster has been declared and an ICS activated, then work with the PIO to issue public announcements and press releases.
- Inspectors should carry personal ID and letters of introduction from local officials.
- Notify the local Fire, Police, and Emergency Management agencies of the purpose and proposed dates of SD inspections.

If a disaster has been declared and an ICS activated, check in with the Incident Commander before entering the disaster area or performing any assessments. Ensure that you and anyone on the SDA team carry proper badges or credentials for entering the disaster area. Lastly, ensure that you and the SDA team check out when leaving the disaster area.

3.3 Pilot Inspections

Prior to setting out in teams, all inspectors should jointly attend up to three pilot inspections each for both residential and non-residential structures with various levels of damage. These

structures can be the first entries in the SDE inventory. The purpose of the pilot inspections is to familiarize inspectors with the SDE data requirements, inspection procedures, and use of the SDE tool. This is a time to ensure that inspectors understand how to enter substantial damage data onto either paper data sheets, or electronically on tablets. See Appendix A of this manual for residential and non-residential forms.

Demonstrate the SDE tool to the inspectors. Once the inspectors have a good sense of how the SDE tool works and understand the data that feeds into the tool, they will be able to perform the inspections with a higher degree of accuracy and prevent repeated visits to any structure.

NOTE: Be aware that a disaster event may trigger multiple forms of damage-scoping assessment. These assessments are briefly described below:

- *Rapid Needs Assessment.* This process is specifically for use in determining the scope of federal involvement in supporting state response operations. It should occur within hours after an emergency, and the information gathered in this process establishes a basis for the response activities taken by the federal government to sustain a population and protect life, and to a lesser degree property.
- *Preliminary Damage Assessment.* The first step in a disaster declaration process, this assessment is usually conducted by teams of federal and local representatives within 30 days after a disaster. The information gathered describes the impact as a whole and is shared with the Governor and Nebraska Emergency Management Agency to determine the type and amount of assistance needed.
- *Damage Assessment.** In addition to determining the scope and scale of the loss, suffering, and/or harm to a community caused by a disaster, this assessment evaluates structural loss into four categories: "destroyed," "major," "minor," and "affected."
- *Public Assistance Damage Assessment.* Part of a damage assessment, this evaluation is specific to impacted public and certain non-profit entities. Public entities may include but are not limited to road systems, utilities, schools, and parks.
- *Substantial Damage Assessment.** Specific to floodplain administration and structures within the SFHA, this assessment determines to what percentage a structure is damaged, and whether the level of damage constitutes "substantial damage."

*These assessments are different yet may be conducted simultaneously if correctly organized.

3.4 Conducting Substantial Damage Inspections

Inspection teams should be equipped to rapidly and accurately collect data needed to make a substantial damage determination. After conducting several residential inspections, each structure should require 15 minutes or less (excluding travel time) to collect data. Inspectors should walk the inspection sites as safety allows and avoid windshield surveys—inspections conducted without leaving the vehicle—as some damage may not be visible from the street.

The resource packet provided to the inspection teams should include the following:

- Numbers and locations of structures to be inspected.
- Delineation of inspection boundaries on a FIRM or community map.
- Sequence of inspections.
- Inspection team assignments by area.
- Guidance materials for inspectors.
See Appendix A for “Percent Damage Estimation Tables” and more.
- Guidance on resident interaction.
See Appendix A for “Right of Entry Certification.” See also FEMA SDE User’s Manual and Field Workbook Appendix C for a sample “Letter of Introduction for SDE Inspections.”
- Instructions for obtaining photographs and GPS coordinate data.
See section 4.2 “Quality Assurance.”

Even though FEMA has designed the SDE Tool such that those who are not building industry experts can create reasonable estimates of damage, the assessment process is not easy and relies on subjective judgment. We strongly encourage you to use the worksheets and guides in this handbook to ensure consistency of inspection within your community.

Worksheet Templates. Providing field inspectors with pre-formatted copies of inspection worksheets enables consistent data collection in the field, and easier data entry into the SDE tool. Without worksheets, inspectors may forget to assign damage percentages to each building component. Located in Appendix A of this handbook are damage inspection worksheets for residential and non-residential structures. They are formatted as fillable PDFs in case your field inspectors are equipped with tablets to use in the field, but they may be printed and completed with ballpoint pen. Ballpoint pens are recommended because their marks are less prone to smudging or water damage that could render the field data illegible.

The “Exterior Inspection Guide” and “Interior Inspection Guide” located in Appendix A provide guidance as to *what* to look for and *where* to look for it during inspections. Inspectors may ask, “What does a 20% damaged foundation look like?” Or, “What indicators should I look for if wall studs are damaged?” Thankfully, FEMA has developed the guides to help ensure consistent and realistic field assessments.

The “Percent Damage Estimation Tables” section in Appendix A includes simplified tables that describe what types of damage can be seen at different percentage levels for medium height freshwater flooding of a single-story house without basement and without waves or high-velocity water. It is recommended that these tables be printed and accompany the inspection teams when inspecting flooded locations.

Exterior Damage. The inspector can perform a damage evaluation of the structure's exterior by walking around the entire structure or as much as possible. The inspector should record the percent damaged for each element. When more than one inspector is present, the team should agree upon the percentages assigned to each structure element.

Sometimes it may be difficult to distinguish between exterior damage and poor maintenance, such as peeling paint or worn interior floor finishes. One of the key factors in making this distinction is to consider if the repairs would be necessary to make the structure compliant with local code requirements and to return it to its pre-damage condition.

Interior Damage. Extreme caution should be exercised before entering damaged structures due to the possibility of structural deficiencies in either the floor or the floor support system. The inspectors must first verify that the floor is stable enough to support their combined weight. Foundation settlement, high flood depths, floor warping, and damage to floor joists can significantly weaken a floor and the ability of inspectors to safely walk on the floor. Stability can be evaluated during the exterior inspection for structures built on crawlspaces or other elevated foundations.

When performing an inspection, all inspectors need to remember that they are inside someone's home or non-residential structure. Inspectors should always verify that they have permission to enter the structure. Appropriate care and respect for the structure and contents should be demonstrated.

A set procedure, or inspection routine, is recommended for the interior inspection to avoid missing any rooms or damage. For instance, in residential structures, inspectors could start on the first or main floor in the utility room (where the hot water tank, washer or dryer, furnace, or other appliances are located) or the kitchen, and then work their way through the home room by room. In non-residential structures, inspectors could start at the front entrance and move clockwise room by room.

Step 4: Processing Field Data

After data is collected in the field, the next step is to enter it into FEMA's SDE 3.0 program and create a record for each SFHA-located structure damaged by the disaster. Completed field inspection documents and associated photographs should be submitted to the processing office the same day that the information is collected. Doing so will help ensure that inspection records are not lost or damaged in the field, that records are not mis-organized, and that substantial damage determinations are produced quickly.

Communities that have extensive floodplains and significant numbers of flood prone structures are encouraged to plan how to handle a post-disaster workload. Even with good planning, additional assistance may be necessary to handle large numbers of damage inspections and permit applications. In addition to support from the state and FEMA, resources may be available from: other communities, Nebraska Floodplain and Stormwater Managers Association (NeFSMA), the State Fire Marshal and State Building Official, and organizations that represent engineers and architects. Some communities develop mutual aid agreements, inter-local agreements, or some other mechanism to facilitate this post-disaster support. While help may be offered to perform inspections and gather data, making

final SD determinations and permit decisions remains the responsibility of local officials within affected communities.

4.1 Market Value

SDE 3.0 requires that each structure record have a *market value* entered in the program. Market value is defined as the most probable price that a property should bring in a competitive and open market and under fair sale conditions. For SDA purposes, market value refers to only the structure; land and exterior improvements such as pools, pool houses, landscaping, and walkways are excluded. Market value should be based on the condition of the structure before the disaster damage occurred. Having an accurate market value is important because the value is a significant factor in the determination of percent damage.

Following a disaster, communities often find it expeditious to obtain the structure's market value from the County Assessor's assessment of the structure. If the same method is used for all damaged structures, consistency of determinations is ensured. Communities may use these other methods to estimate market value, the important aspect being uniform application within a community:

- Estimates of a structure's actual cash value, including depreciation.
- Market value appraisals prepared by qualified professionals licensed in the State of Nebraska.

Please refer to the sections 3 and 8 of FEMA P-748 "Substantial Damage Estimator (SDE) User Manual and Field Workbook" for further guidance regarding market value and actual cash value.

$$\frac{\text{Cost of Improvement or Cost to Repair to Pre-Damage Condition}}{\text{Market Value of Building}} \times 100 = \% \text{ Damage}$$

4.2 Quality Assurance

It is important that all SDE assessments be reviewed for consistency and accuracy. The assessments should be reviewed by someone other than the person who generated or input the data. The following actions are recommended as part of the quality assurance review:

- Plot all of the GPS coordinates on a georeferenced map or GIS overlay to verify that all coordinates match the inspection area.
- Review photographs for legibility and consistency with the requirements set by the SDA manager or floodplain administrator and photograph best practices.
- Confirm agreement between the photograph and the structure information. For example, an assessment for a two-story residential structure cannot have a photograph showing a one-story house.

- Review the entire database for duplicate records from the current or previous days. This can be done by searching for duplicate addresses or ID numbers.
- Verify that the correct base cost data and depreciation percentage based on structure type were entered into the tool.
- Verify that the users have entered reasonable percent damages based on the depth and duration of flooding above the lowest floor for the structures throughout the inventory area.
- Verify that the correct community name and NFIP information were entered into the tool and are consistent for all assessments within the same community.
- Check that the street name is spelled the same for all entries on that street and that the street suffix is correct.
- Verify that all data requested by the SDE manager has been entered and is consistent where applicable. Items include: comment boxes, name and date of the source for the base cost data.
- If the teams are still in the field collecting data, communicate the errors to the inspectors and how to properly complete future assessments to prevent re-occurrences of the errors.

Step 5: Review and Issuance of Substantial Damage Determinations

Substantial damage, as defined in 44 CFR. § 59.1, means, “damage of any origin sustained by a structure whereby the cost of restoring the structure to its before-damaged condition would equal or exceed 50% of the market value of the structure before the damage occurred.” Most damage occurs during a single and sudden event, such as a fire, windstorm, lightning strike, falling tree, tornado, earthquake, flood, or natural gas explosion. Damage may also be unrelated to a specific event, such as soil settlement, exposure to the elements, termite infestation, vandalism, and other causes.

If the building is found to be substantially damaged, then the structure must be brought into compliance with the community’s floodplain ordinance. *Even if not damaged by flooding*, a structure must be protected from future flooding. In Nebraska, this means ensuring the lowest floor of the structure is elevated to at least one foot above the base flood elevation, among other minimum standards found in your community’s local ordinance.

5.1 Issuing Substantial Damage Determinations

Local officials should convey SD determinations to property owners in an official letter. Because this letter notifies the owners of a significant requirement, it is recommended that it be sent in a manner that documents receipt by the addressee, such as certified mail.

Appendix A includes three sample letters to send SD determinations to property owners. The first sample may be used to notify owners when a local official determines that buildings have sustained substantial damage *via flood*, while the second letter applies when substantial damage is caused by other disasters. The third sample is used to notify owners that it has been determined that damage *does not* constitute substantial damage.

The local official should offer to meet with owners or representatives to explain the various aspects required for buildings to meet the community's floodplain management regulations for substantially damaged buildings.

5.2 Determination Integrity

Greater precision is needed in determining substantial damage when the level of repair or improvement costs is close to 50% of the value of the structure. Property owners may appeal a community's substantial damage determination. Appeals of substantial damage determinations most commonly occur when the percent damage is determined to be between 50 and 65%.

NOTE: If your jurisdiction does not have an appeal process provided in local ordinance, then appeals may be processed as provided in Nebraska Revised Statutes §23-168.02 (for counties) and Nebraska Revised Statutes §19-912 (for municipalities). In municipalities, those wishing to appeal have 15 days within which to submit their petition, while persons in county jurisdictions must submit and appeal petition "within a reasonable time."

An independent evaluation of damage may include a cost estimate for repairs provided by a local official (other than the initial inspector) or a contractor. Located in Appendix A is "Included and Excluded Cost for Damage Repair Estimates." This list includes items that should be evaluated for damage and included in a repair cost estimate, as well as those items that should be excluded. If a homeowner submits an independent repair estimate, carefully examine it to ensure the proper items are included, or excluded, before accepting it in lieu of the substantial damage determination. Communities are recommended to require that homeowners submit at least three estimates. Doing so can help prevent unscrupulous behavior and ensure the legitimacy of the community's substantial damage assessment program.

The cost of repairs must be calculated for full repair to pre-damaged condition, even if the owner elects to do fewer improvements, such as not finishing a basement that was finished pre-disaster. The total cost of repair includes structural and finish materials as well as labor. Total costs estimates must include any unpaid labor such as that by property owner and volunteers, as well as the value of any donated materials.

Local officials are responsible for reviewing the validity of all cost estimates provided by applicants, whether prepared by licensed contractors, engineers, architects, professional cost estimators, or property owners. Local officials should also inspect damaged buildings and manufactured homes to verify that the proposed costs include all work necessary to restore the structures to pre-damage condition. See "Step 6: Permitting" for more information regarding inspections.

Please note that the integrity of the community's determinations and permitting process can be undermined if care is not taken to avoid conflicts of interest. A couple pitfalls to avoid include:

- *Allowing property owners or building contractors to complete damage assessments.* Property owners are unable to objectively assess the damage of their own property. Similarly, building contractors' assessments may be biased by a desire to generate business for their own financial gain.
- *Allowing property owners to determine the market value.* Property owners are unable to objectively state the market value of their property, and an inconsistent approach to determining market value will delegitimize assessments community-wide.

Step 6: Permitting

All floodplain management ordinances in the State of Nebraska require permits for the repair or reconstruction of damaged structures. The local floodplain administrator must ensure that the repair of a damaged structure within the community's SFHA meets the requirements of the floodplain management ordinance. If your community does not already have a permit application and review procedure in place, one must be set up before accepting permit applications in order to ensure fair and consistent review of development requests.

Depending on the scale and severity of damage, some communities institute a full or partial moratorium on issuing permits. Once the community has evaluated the magnitude, scope, and general location of potential substantially damaged structures, the community may remove the moratorium. When mitigation projects such as floodplain buyouts, elevation-in-place, or other measures are considered, it may be reasonable to delay rebuilding until the pros and cons of such projects are evaluated.

Structures with less than 50% damage can be issued a floodplain development permit and begin repairs immediately after issuance. Permits for repair or compliance need to have the SD determination attached or at minimum the percent damaged noted on the permit application and the SD documentation on file with your permits.

Records or files for structures identified as substantially damaged should be flagged or specially marked so that development permits are not inadvertently issued for repairs that do not bring the structure into compliance with current floodplain regulations. Permits should not be issued until compliance with the local floodplain management ordinance is demonstrated in the supporting documents submitted with the development permit application.

Want to know *why* the threshold for significant damage is set at 50%? See Section 2.2 of FEMA 213, **"Answers to Questions About Substantially Improved / Substantially Damaged Buildings."**

Although the use of checklists is not required by the NFIP, it is a good way to document plan reviews, inspections, and compliance. Some communities use checklists during plan reviews to verify that appropriate flood damage-resistant provisions have been checked and found to satisfy the applicable requirements. Similarly, the use of inspection checklists improves the consistency of inspections and helps verify the flood damage-resistant requirements.

NOTE on Cumulative Cost: If standards for cumulative improvement are adopted in a jurisdiction's floodplain management ordinance, substantial damage occurs at the point when multiple damages or improvements total 50% of the original market value of the structure. For example, an improvement such as a kitchen remodel project that happened months before the disaster event counts towards the total 50%.

6.1 Repairs to Local Infrastructure

If a community experiences damages to infrastructure such as roads, then a blanket permit can be issued to repair or reconstruct these structures to their *pre-disaster* state. Road surface material must be the same as pre-disaster, as well as road elevation. A running list of repairs conducted under the benefit of such a permit should be kept on a separate sheet and attached to the permit for record keeping. A separate permit application must be reviewed if the infrastructure is changed in any way from how it was originally constructed pre-disaster.

Culverts are often damaged by flood waters. Replacement or repair of culverts should be permitted on an individual basis. Culverts are *water conveyance structures* and even seemingly minor changes to material, size, position, angle, and elevation can have detrimental upstream and downstream effects. For this reason, repair and installation of culverts requires separate permitting and engineering analysis from other infrastructure.

NOTE: A jurisdiction that fails to process floodplain development permits for its own development activities is in violation of the NFIP.

6.2 NFIP Violations

Sometimes there is pressure on local officials to waive permitting requirements that are perceived as delays to recovery. However, returning structures to their pre-flood condition leads to repetitive flood damage. Yielding to such pressure will expose citizens and property to future flood risk. If a community fails to properly administer its floodplain management ordinance for substantially damaged structures, its standing in the NFIP may be jeopardized as well as its access to future financial support.

If a structure that is substantially damaged is repaired or rebuilt without being brought into compliance with floodplain requirements, then it is in violation of the floodplain management requirements and the cost of an NFIP flood insurance policy will likely be high. The NFIP may deny flood insurance coverage for specific buildings if communities cite violations and owners refuse to comply with the floodplain management requirements.

Communities may decide to waive permit fees after significant damage events to be responsive to the needs of property owners. Remember, however, that waiving fees does not waive the requirement for property owners to obtain permits and comply with regulations.

6.3 Monitoring and Inspection

Even when building permits and construction plans are complete, proper inspections during construction are important to determine whether any work has deviated from the scope described in permits and plans. To aid your community's enforcement efforts, consider the following actions:

- Ask electric utility companies and community utility departments to turn on service only when property owners provide copies of approved building permits or evidence that permits are not required.
- Establish a routine to drive through affected areas to check for unpermitted construction work.

Building inspectors need to understand the flood damage-resistant design and construction requirements that they are to check for during inspections. If deviations from the conditions of a permit or plans are discovered early during construction, it will be easier to work with the owner and builder to achieve compliance through corrective actions.

Using a plan review and inspection checklist can make inspections easier because the inspector has a standardized summary of floodplain management requirements. A checklist also documents the inspection, which can be important if questions arise regarding compliance.

The following inspections are recommended for structures that are required to be brought into compliance with the floodplain management requirements for new construction and substantial improvements.

Footing or Foundation Inspection. Buildings and additions that are elevated on solid perimeter foundation walls create enclosures below the elevated buildings (e.g., crawlspace or underfloor space). Inspectors should check for the specified number, size, and location of flood openings. The bottom of each flood opening must be no higher than one foot above finished exterior grade or interior floor; flood openings should not be confused with underfloor air ventilation openings, which are located just under the floor level. For slab-on-grade (and stem wall) foundations, the lowest floor inspection is also conducted at this time.

Lowest Floor Inspection. The best time to verify compliance with the elevation requirement is after the lowest floor elevation is set, but before further vertical construction takes place. An error in elevation of an inch or two may seem minor, but corrective action can be expensive and complicated if that error is discovered after the walls and roof are in place.

HVAC Inspection. Verify that utilities and mechanical equipment are elevated or designed to prevent water from entering or accumulating within the components during conditions of

flooding. Frequently overlooked items include heating, ventilation, and cooling equipment; electrical outlets; plumbing fixtures; and ductwork that is installed under the floor, usually in a crawlspace.

Enclosure Inspection. Inspect enclosures below elevated buildings to ensure that they comply with the limitations on use such as parking, building access, or storage; protection of HVAC described above, the use of flood damage-resistant materials, and the specific requirements based on the flood zone.

Final Inspection. A final inspection to document compliance can be performed at the same time as the final inspection to issue the occupancy certificate. During final inspections:

- Collect the “as-built” documentation of elevations prior to the final sign-off and issuance of occupancy certificates.
- If used, complete and sign the plan review and inspection checklist and place all inspection reports in the permit file. If not, require the “as-built” documentation from a registered surveyor or engineer signing off that the final construction meets the permit and floodplain management ordinance requirements.

If your community does not have building inspectors, special efforts should be made to educate construction contractors of the floodplain development requirements. Per the NFIP, your permit files must have an official record that shows that new structures and substantially improved structures in your SFHA are properly elevated. Your community may require a completed Elevation Certificate to fulfill this requirement. Use of FEMA’s Elevation Certificate can also be used by the owner to obtain flood insurance.

Record-keeping

Obtaining certain documentation and maintaining complete permit records are key responsibilities for communities that participate in the NFIP. Certifications or documentation of the following must be maintained for construction in SFHAs:

- The permit application form and all attachments, including the site plans.
- Documentation of the SD determination.
- Community letter documenting the SD determination.
- Floodway encroachment analyses, if required.
- Records of inspections of the project while under construction such as obtaining the lowest floor elevations, which is initially obtained after the foundation is in place but prior to further vertical construction, and other pertinent elevations.
- Design of engineered openings that are used as alternatives to the prescriptive openings in the walls of enclosures below elevated buildings in A zones.
- Evidence that work proposed for listed historic structures will not preclude continued listing.
- Variance proceedings, including justifications and notifications to recipients.
- Record of final inspections of the construction project before the certificate of occupancy is issued, such as location and size of openings, location of utilities, and “as-built” lowest floor elevation.

- Certification of the elevation to which any nonresidential building has been flood-proofed before the certificate of occupancy is issued.

Chapter 5, “Administering Substantial Improvement and Substantial Damage Requirements,” and Chapter 6, “Factors to Consider and Illustrations of Substantial Improvement and Repair of Substantial Damage,” of FEMA’s P-758, “Substantial Improvement/Substantial Damage Desk Reference,” provide further detail and assistance on permitting requirements and procedures.

Educating about Increased Cost of Compliance

Under the NFIP, the ICC program may provide additional financial assistance to either elevate or remove *flood-damaged* structures from the floodplain.

The ICC applies to structures substantially damaged by flood. It provides funding for a suite of measures often known as FRED: flood-proofing, relocation, elevation, or demolition. The two most common types of ICC mitigation used are relocation and elevation.

Relocation. Relocating structures to higher ground or buying out flood prone property is the safest way to protect against flooding and reduce the liability and cost to the community. Relocation can be expensive, but in the long run is not as costly as repetitive flood damages and high flood insurance premiums.

Elevation. The elevation method is dependent on the base flood elevation, structure condition, flood hazard, local floodplain regulations, and owner’s financial condition. When elevating, it is essential for all utilities and mechanical equipment—such as air conditioners, water heaters, and furnaces—to be one foot or more above the base flood elevation.

Owners who have standard flood insurance coverage have paid for and are eligible to receive ICC benefits if the local official determines that a structure located in a SFHA has been substantially damaged by a flood or cumulatively damaged by flooding beyond 50% of the value of the structure when the damage occurred.

ICC does not normally cover buildings in B, C, X, or D zones. However, if the community can document that it is regulating an area outside of the SFHA, ICC will be available.

Chapter 3: Protecting Your Community's Future

Mitigation

Mitigation actions are activities or projects that support the accomplishment of the goals and mission of your local hazard mitigation plan. Flood-related mitigation actions are sustained actions taken to reduce or eliminate long-term risk to people and property from flood hazard and its effects. As natural disasters become more frequent and costly from which to recover, implementation of mitigation actions becomes ever more important. According to the National Institute of Building Sciences, every \$1 spent on federal mitigation grants towards flood mitigation prevents an average \$7 in post disaster recovery and repair costs. Simply put, mitigation saves money.

As a floodplain administrator, be sure to collaborate with your local emergency manager and participate in updates to your local hazard mitigation plan. Make certain to include mitigation measures appropriate to your jurisdiction in the hazard mitigation plan, look for opportunities to collaborate with fellow stakeholders on mitigation activities, and consider ways to jointly pursue project planning and implementation funding.

The 2022 State of Nebraska Flood Hazard Mitigation Plan (SFHMP) proposes many flood mitigation actions to present holistic, discrete, and cost-effective options to reducing flood hazard. The mitigation actions have been grouped in accordance with FEMA's four mitigation action categories:

- **Natural Systems Protection.** These are actions that minimize damage and losses and preserve or restore the functions of natural systems. A host of additional ecosystem services are typically gained with implementing natural system protections. Many of these types of actions are projects eligible for funding through the FEMA Hazard Mitigation Assistance program.

Examples include: protecting natural habitat, establishing wetland land banks, adopting stream and wetland buffers, and establishing an open space acquisition program.

- **Local Plans and Regulations.** These actions include government authorities, policies, or codes that influence the way land and buildings are developed and built.

Examples include: adopting stormwater management regulations; establishing incentives to limit or eliminate development in flood-prone areas; integrate flood risk considerations in comprehensive plans, strategic plans, and other community policy.

- **Education and Awareness Programs.** These are actions to inform and educate citizens, elected officials, and property owners about hazards and potential ways to mitigate them. These actions may also include participation in national programs, such as the StormReady Communities initiative. Although this type of mitigation reduces risk less directly than structural projects or regulation, it is an important foundation

to sustaining mitigation planning and implementation. A greater understanding and awareness of hazards and risks among local officials, stakeholders, and the public is more likely to lead to direct actions.

Examples include: distributing annual flood safety pamphlets, require realtor disclosures of flood risk, and ensure emergency evacuation routes and transportation for vulnerable community members.

- **Structure and Infrastructure.** These actions involve modifying existing structures and infrastructure to protect them from a hazard or remove them from a hazard area. This could apply to public or private structures as well as critical facilities and infrastructure. This type of action also involves projects to construct man-made structures to reduce the impact of hazards. Many of these types of actions are projects eligible for funding through the FEMA Hazard Mitigation Assistance program.

Examples include: Retention basins and reservoirs, detention basins, natural bank stabilization, structure elevation, and designing infrastructure with future flood conditions incorporated.

A full list of mitigation actions can be found on page 116, Table 40 of the SFHMP. Further, Appendix C of the plan contains a compilation of Flood Mitigation Strategies and Practices Project Sheets to assist local communities in their flood risk mitigation planning efforts. The appendix is divided into four sections based on the type of mitigation activity—Local Plans and Regulations, Education Awareness Programs, Natural Systems Protection, and Structure and Infrastructure. Each project page contains a description of the strategy, its applicability, an approach to implementation, relative cost considerations, and references or links for additional information. The project pages are intended to serve as a menu of mitigation strategies (with supporting information) that communities can choose and incorporate directly into their mitigation planning activities. The complete SFHMP may be downloaded here:

dnr.nebraska.gov/floodplain/nebraska-flood-hazard-mitigation-plan

Federal Funding

Post-disaster recovery presents the perfect opportunity to implement mitigation measures that reduce the impact of future hazards. Federal or state mitigation programs are often available. The Nebraska Emergency Management Agency (NEMA) and the Nebraska Department of Natural Resources can provide you with information, technical assistance, and guidance on mitigation actions. Public meetings can be held in impacted communities to introduce disaster victims to the various options available to them.

Flood Mitigation Assistance (FMA) Program. FMA is administered by NeDNR and provides financial assistance to federally recognized tribes and local governments to implement measures that reduce or eliminate long-term risk of flood damage to structures insured under the NFIP. Funds may be used for planning activities as well as purchase of flood-prone properties. The FMA program has priorities to mitigate structures that have suffered repeated flood claims and those with severe repetitive loss. To demonstrate loss, damage

must be documented through substantial damage determinations. FEMA publishes Fact Sheets and other resources to help you understand the opportunities available through this grant. Go to [fema.gov/grants/mitigation/floods](https://www.fema.gov/grants/mitigation/floods) to learn more.

Hazard Mitigation Grant Program (HMGP). HMGP is a mitigation grant that results from a presidential disaster declaration. NEMA administers the HMGP in Nebraska. Eligible applicants include states, territories, federally recognized tribes, local governments, and some private non-profit organizations. Communities may apply for HMGP assistance on behalf of affected individuals and businesses, and all funds must be used to reduce or eliminate losses from future disasters. This grant focuses on funding projects following a disaster that allow applicants to rebuild in a way that reduces the impact future events. Common HMGP projects include:

- Acquisition.
- Safe rooms.
- Elevating flood prone structures.
- Utility retrofitting.
- Slope stabilization.
- Drainage improvements.
- Post-disaster code enforcement.
- Hazard mitigation plan development.

Building Resilient Infrastructure and Communities (BRIC) Program. Administered by NEMA, BRIC supports pre-disaster mitigation projects, with an emphasis on collaborative, multi-stakeholder efforts to implement nature-based solutions. The goal of the program is to shift the federal focus away from disaster-response funding, and towards research-supported, proactive and sustainable mitigation measures. For most BRIC projects, up to 75 percent of eligible project costs are covered by the federal grant funds, and at least 25 percent are covered by a local match. For economically disadvantaged rural communities, up to 90 percent of eligible project costs are covered by federal grant funds.

Many projects may be funded by BRIC. FEMA publishes Fact Sheets and other resources to help you understand the opportunities available through this grant. Go to <https://www.fema.gov/grants/mitigation/building-resilient-infrastructure-communities> to learn more.

Additional Federal, State, and Local Funding Sources

Many additional financial resources are available to your community to aid in disaster mitigation. Please consult the 2022 State of Nebraska Flood Hazard Mitigation Plan for mitigation-related funding opportunities available from federal and state agencies, as well as others. The SFHMP also contains many facts and figures that can help your jurisdiction compete for grants with the best available data to describe your vulnerabilities to flooding.

This page intentionally left blank.

References

Chase, Chuck. **"Substantial Damage Estimation Process,"** Floodplain Management Today (May, 2019). Lincoln, NE: Nebraska Department of Natural Resources.

Chase, Chuck and Jared Ashton. **"The Importance of Substantial Damage Estimation,"** Floodplain Management Today (May, 2019). Lincoln, NE: Nebraska Department of Natural Resources.

FEMA, **213, Answers to Questions About Substantially Improved / Substantially Damaged Buildings.** Washington, DC: Federal Emergency Management Agency, 2018.

FEMA, 480, National Flood Insurance Program Floodplain Management Requirements. Washington, DC: Federal Emergency Management Agency, 2005.

FEMA, **Building Community Resilience with Nature-Based Solutions.** Washington, DC: Federal Emergency Management Agency, 2020.

FEMA. **Disaster Recovery Reform Act Section 1206 Public Assistance Companion Guide.** Washington, DC: Federal Emergency Management Agency, January 20, 2023.

FEMA. **FIA-15/2017, National Flood Insurance Program Community Rating System Coordinator's Manual.** Washington, DC: Federal Emergency Management Agency, 2017.

FEMA, **Flood Risk Communication Toolkit for Community Officials.** Washington, DC: Federal Emergency Management Agency, 2020.

FEMA. **FP 104-009-2, Public Assistance Program and Policy Guide, Version 4.** Washington, DC: Federal Emergency Management Agency, 2020.

FEMA, **Increased Cost of Compliance Coverage Fact Sheet.** Washington, DC: Federal Emergency Management Agency, 2017.

FEMA. **National Flood Insurance Program Community Rating System Addendum to the 2017 Coordinator's Manual.** Washington, DC: Federal Emergency Management Agency, 2021.

FEMA, **P-758, Substantial Improvement/Substantial Damage Desk Reference.** Washington, DC: Federal Emergency Management Agency, 2010.

FEMA, **P-784, Substantial Damage Estimator (SDE) User Manual and Field Workbook.** Washington, DC: Federal Emergency Management Agency, 2017.

FEMA. **Policy FP 204-079-01, Building Code and Floodplain Management Administration and Enforcement.** Washington, DC: Federal Emergency Management Agency, October 15, 2020.

FEMA, **Substantial Damage Estimator Best Practices**. Washington, DC: Federal Emergency Management Agency, 2017.

FEMA. **Volume 1: Disaster Recovery Reform Act Section 1206 Frequently Asked Questions**. Washington, DC: Federal Emergency Management Agency, November 10, 2021.

FEMA. **Volume 2: Disaster Recovery Reform Act Section 1206 Frequently Asked Questions**. Washington, DC: Federal Emergency Management Agency, November 10, 2021.

Hatcher, Emily. **"Substantial Damage: The Bane of Our Existence, or the Key to Our Resilience."** Floodplain Management Today (April 2022). Lincoln, NE: Nebraska Department of Natural Resources.

ISO. **Developing a Substantial Damage Management Plan for Credit under the Community Rating System of the National Flood Insurance Program**. 2021.

NeDNR, 2019 Disaster Damage Assessment Packet. Lincoln, NE: Nebraska Department of Natural Resources, 2019.

NeDNR. **2022 State of Nebraska Flood Hazard Mitigation Plan**. Lincoln, Nebraska: Nebraska Department of Natural Resources, 2022.

NOTE: Hard copies of FEMA Building Science's current publications may be ordered by contacting the **FEMA Distribution Center** using the online order form.

Appendices

Appendix A: Worksheets, Templates, and Handouts

Contents

<i>Checklist 1 - Pre/Post Disaster Planning</i>	35
<i>Checklist 2 - Field Preparations</i>	39
<i>Notice to Post on Structures</i>	41
<i>Press Release</i>	43
<i>NFIP and Substantial Damage / Substantial Improvement Handout</i>	45
<i>Included and Excluded Costs for Damage Repair Estimates</i>	49
<i>Right of Entry Form</i>	51
<i>Exterior Inspection Guide</i>	53
<i>Interior Inspection Guide</i>	55
<i>Percent Damage Estimation Tables</i>	59
<i>SDA Worksheet: Residential Worksheet</i>	67
<i>SDA Worksheet: Non-Residential / Commercial Worksheet</i>	69
<i>SD Assessment and Permit Requirement Decision Tree</i>	71
<i>Flood-Related Substantial Damage Determination Letter</i>	73
<i>Non-Flood Related Substantial Damage Determination Letter</i>	75
<i>Compliant Structure / Non-Substantial Damage Determination Letter</i>	77
<i>Contractor or Community Floodplain Damage / Improvement Cost Form</i>	79
<i>Floodplain Development Permit Application</i>	81
<i>Compliance Requirements in Flood Zone A</i>	83

NOTE: Some of these forms--such as the Notice and SDE Worksheets--are enabled as fillable PDFs. Others--such as the letter templates--are intended to be copied and pasted into a document that is printed on your jurisdiction's letterhead. The following worksheets and templates are available for individual download at Nebraska Department of Natural Resources' website: <https://dnr.nebraska.gov/floodplain/digital-desk-reference>

This page intentionally left blank.

Checklist 1 - Pre/Post Disaster Planning

Need	Complete	Item	Notes:
Items 1-12 may all be completed prior to a disaster occurring. Do not attempt items 13 - 19 without first completing items 1 - 12.			
1.	_____	Brief all elected officials as soon as possible after the event regarding the NFIP requirements for Substantial Damage determinations. <i>Source: FEMA P-758, Substantial Improvement/Substantial Damage Desk Reference, Chapter 7 (May 2010)</i>	
2.	_____	Select an SDE Manager. <i>Source: FEMA P-784, SDE User Manual and Workbook, Section 7.1 (August 2017)</i>	
3.	_____	Review NFIP requirements for Substantial Damage and Substantial Improvement. <i>Sources: NFIP Regulations; FEMA P-758, Substantial Improvement/Substantial Damage Desk Reference (May 2010); FEMA 213, Answers to Questions About Substantially Damaged Buildings (May 1991)</i>	
4.	_____	Review SDE tool and User Manual to understand the SDE data requirements. <i>Sources: FEMA P-784, SDE User Manual and Workbook, Sections 3 and 4 (August 2017); FEMA SDE Best Practices (August 2017); FEMA Substantial Damage Estimator Tool Frequently Asked Questions</i>	
5.	_____	Identify Flood Insurance Rate Maps (FIRMs) or other floodplain maps to review the boundaries of the SFHA. Data may include FIRMs, FBFMs, FIS reports, community maps showing previously flooded areas, and flood studies by State or other Federal agencies. <i>Source: FEMA P-784, SDE User Manual and Workbook, Section 8.1 (August 2017); Community NFIP coordinator</i>	
6.	_____	Identify type, location, and community contacts for tax or GIS data for structures within the SDE inventory area that are potentially Substantially Damaged. Any or all of the following data will be useful: owner name, building address, type of house, non-residential building use, year of construction, square footage, number of stories, adjusted building values, number of years since last tax adjustment, and dates of additions or renovations. <i>Source: FEMA P-784, SDE User Manual and Workbook, Section 8.1 (August 2017)</i>	
7.	_____	Identify community street, address, or tax maps for delineating the boundaries of the SFHA. This will help delineate the maximum limits of the SDE inventory area while also showing addresses or lot locations. <i>Source: FEMA P-784, SDE User Manual and Workbook, Section 7 (August 2017)</i>	
8.	_____	Transfer SFHA boundaries from floodplain map to a base map that includes streets, addresses, or a tax map. Using the effective FIRM for the community, transfer the SFHA boundaries to a base map with named streets and either addresses or lot boundary lines. This will delineate the maximum limits of the SDE inventory to narrow the focus of the inspections while avoiding areas outside the SFHA. <i>Source: FEMA P-784, SDE User Manual and Workbook, Sections 8.1 and 9.3 (August 2017)</i>	

Checklist 1 - Pre/Post Disaster Planning Cont.

Need	Complete	Item	Notes:
9. _____	_____	<p>Pre-load available property data into the SDE tool. These data must be cross-referenced to a FIRM, address, or tax map so that the inspectors know which structure and property record are being inspected. Once the data are uploaded into the SDE tool, it will create property records. After the inspection is complete and the field data are entered, the records become SDE assessments.</p> <p><i>Sources: FEMA P-784, SDE User Manual and Workbook, Sections 3.7, 7.5, and 8.1 (August 2017)</i></p>	
10. _____	_____	<p>Prepare a list of local contacts for all project personnel and local agencies. This list should include, as a minimum, the SDE Manager, a responsible community official, inspectors, office staff, and the police, fire, and emergency management contacts.</p> <p><i>Source: FEMA P-784, SDE User Manual and Workbook, Section 8.1 (August 2017)</i></p>	
11. _____	_____	<p>Research, obtain, or develop base costs for determining reasonable structure values for residential and non-residential structures in the community. Resources include industry-accepted cost-estimating guides, building permit data, discussions with local contractors or realtors, adjusted tax data, guidance from adjacent communities, or personal experience with residential and non-residential cost estimating.</p> <p><i>Sources: FEMA P-784, SDE User Manual and Workbook, Sections 3.11, 8.1, and 8.4 (August 2017)</i></p>	
12. _____	_____	<p>Prepare a Letter of Introduction on community letterhead.</p> <p>The letter will be handed to occupants by the inspectors as they prepare to enter a new property. This should include, as a minimum, a brief discussion of the intent and scope of the SDE inspections, the normal work hours and days, the option of the structure owner or resident to refuse entry to the property or the structure, and the name, telephone number, and e-mail address of the SDE Manager or local official in charge of the SDE inventory.</p> <p><i>Source: FEMA P-784, SDE User Manual and Workbook, Appendix C (August 2017)</i></p>	
<p>Items 1-12 may all be completed prior to a disaster occurring. Do not progress on items 13 - 19 below without first completing items 1 - 12 above.</p>			
13. _____	_____	<p>Perform a curbside review of structures within the SDE inventory area. This helps the SDE Manager understand the scope and extent of the inventory area as well as the initial construction quality, size, and type of structures that will require inspections.</p> <p><i>Source: FEMA P-784, SDE User Manual and Workbook, Sections 7.3 and 9.5 (August 2017)</i></p>	

Checklist 1 - Pre/Post Disaster Planning Cont.

Need	Complete	Item	Notes:
14.	<input type="checkbox"/>	<p>Identify the property and structure access procedures for locked or unoccupied structures. These procedures should be written and well defined; the elected officials and community legal counsel should then review and approve them to ensure that the procedures are legal and defensible. As a minimum, these procedures should include guidance on owner/resident interaction, and requirements for entering open property and structures when owners/residents are not present or when occupants are present but refuse entry to the structure or property. In addition, inspectors with permission to enter a structure need to verify that the structure is structurally stable and safe to enter.</p> <p><i>Source: FEMA P-784, SDE User Manual and Workbook, Sections 8.2 and 9.1 (August 2017)</i></p>	
15.	<input type="checkbox"/>	<p>Identify the number and names of inspectors required for the inventory and form the inspection teams. The number of inspectors and inspection teams will determine the potential daily rate of completed inspections and a target completion date.</p> <p><i>Source: FEMA P-784, SDE User Manual and Workbook, Section 8.2 (August 2017)</i></p>	
16.	<input type="checkbox"/>	<p>Identify inspection areas that may require permission or special access. Industrial parks, factories, private or gated subdivisions, islands, airports, school campuses, and other areas may require permission or other advance coordination to gain access to the property and structures.</p>	
17.	<input type="checkbox"/>	<p>Identify the proposed sequence of SDE inspections. Decide which subdivisions, neighborhoods, or areas will be inspected first, then next, and so on. The sequence will depend on the number of inspectors, their availability during the inspection process, the number of structures to inspect, and the proposed completion date of the inspections. The sequence may be revised as issues arise due to other post-disaster activities that may restrict or limit the inspection teams.</p> <p><i>Source: FEMA P-784, SDE User Manual and Workbook, Section 8.2 (August 2017)</i></p>	
18.	<input type="checkbox"/>	<p>Make Substantial Damage determinations for structures located in the SFHA.</p> <p><i>Sources: FEMA P-784, SDE User Manual and Workbook, Sections 3.11 and 9 (August 2017)</i></p>	
19.	<input type="checkbox"/>	<p>After Substantial Damage determinations are complete, issue permits for repair and reconstruction.</p> <p><i>Source: FEMA P-758, Substantial Improvement/Substantial Damage Desk Reference, Chapter 7 (May 2010)</i></p>	

This page intentionally left blank.

Checklist 2 - Field Preparations

Need	Have	Item	Notes:
1.	_____	Flood maps such as FIRMs, FIRMets, clips of NeDNR Interactive Flood Maps, or other floodplain or flood risk maps.	
2.	_____	Assessor's map or other address map with flood boundaries.	
3.	_____	Route or area map showing proposed areas and sequence for data collection.	
4.	_____	Tax data: structure owner name, structure address, mailing address, number of stories, and dimensions or habitable area.	
5.	_____	Copies of blank SDE Damage Inspection Worksheets.	
6.	_____	Copies of blank photo log sheets (if needed).	
7.	_____	Photo ID badges for inspectors.	
8.	_____	Letter of Introduction with community point of contact (name and telephone number).	
9.	_____	Clip boards, pens/pencils, steno pad or notebook, highlighter.	
10.	_____	100 ft tape measure (to obtain or verify structure dimensions).	
11.	_____	Address board and dry erase markers.	
12.	_____	Hard hat, gloves, safety glasses and vest, steel-toe and steel-shank shoes, safety vest, and flashlight.	
13.	_____	Cell phones or walkie-talkies.	
14.	_____	Digital camera, primary and alternate memory cards, and extra batteries.	
15.	_____	Verification that police, fire, and emergency management agencies have been advised of SDE inspections.	
16.	_____	Laptop computers or tablets with SDE tool installed and power cords with plug adapters for use and re-charging in field vehicles.	
17.	_____	Rain or cold-weather gear.	

Checklist 2 - Field Preparations

NeedHave		Item	Notes:
Review these procedures with your inspectors prior to collecting data:			
1.		Field safety procedures for dealing with extreme temperatures, wild and domestic animals, driving, parking, and accidents.	
2.		SDE data collection and recording requirements.	
3.		Guidance for entering locked, occupied, or unoccupied structures.	
4.		Guidance on identifying initial construction quality for both residential and non-residential structures.	
5.		SDE inspection procedures for residential structures.	
6.		SDE inspection procedures for non-residential structures.	
7.		Guidance on selecting the depreciation rating.	
8.		Data collection routes and sequence.	
9.		Guidelines for interaction with structure owners and occupants.	

NOTICE

**Because this building is located in a regulatory floodplain and was damaged by _____,
Substantial Damage Assessment must be conducted by the _____.**

**Before occupying this building or doing any repair work you must call the Floodplain Administrator at
(____) _____
to schedule an inspection.**

Failure to obtain reconstruction approval may result in a penalty.

This page intentionally left blank.

Example Press Release

Residents in [JURISDICTION] with Disaster Damage are Reminded of Permit Requirements

As property owners in [jurisdiction] contemplate clean up and repairs following the recent [disaster], the [jurisdiction permit office] is reminding residents to obtaining local permits before repairing or rebuilding damaged structures in the special flood hazard area.

The permits are required as part of local government participation in the National Flood Insurance Program (NFIP), providing eligibility for flood insurance, flood disaster assistance, state and federal grants and loans, and buyout funds for flood-prone properties throughout the community.

Local floodplain management ordinance requires that permits be obtained for any construction or development activity in a floodplain area, including the repair or reconstruction of structures damaged by a disaster.

Repairs to damaged buildings can be permitted, however, special conditions apply to “substantially damaged” buildings (structures for which the total cost of repairs is $\geq 50\%$ of the structure’s pre-disaster market value). If a building is found to be substantially damaged, regulations require that repairs include bringing the structure into full compliance with the local floodplain ordinance. In some cases, doing so may require repairs that include elevating or flood proofing the structure to reduce the potential for future flood damage.

The cost to repair must be calculated for full repair to “pre-damaged” condition, even if the owner elects to do less. The total cost to repair includes structural and finish materials as well as labor. If labor and materials have been donated, they must still be assigned a value. If local building codes require the structure to be repaired according to certain standards, these additional costs must be included in the full repair cost for the structure.

State and federal assistance may be available to property owners to reduce the chances of future flood damage. Mitigation assistance may cover costs of relocation, or for elevating or purchasing flood-damaged structures. If damage is caused by a flood, flood insurance may also provide up to \$30,000 to protect a structure from future flooding through a claims process known as Increased Cost of Compliance (ICC). The property owner must have had flood insurance for ICC to become available.

Property owners and residents with [disaster]-damaged buildings should contact [local building, zoning or floodplain administrator] for more information on repair and reconstruction permits.

This page intentionally left blank.

Overview of the National Flood Insurance Program and Substantial Damage / Substantial Improvements

Improvement and Repair of Property in the Floodplain

Our jurisdiction is a participating community in the National Flood Insurance Program (NFIP) administered by the Federal Emergency Management Agency (FEMA). In exchange for making flood insurance available to citizens of our jurisdiction, FEMA requires the community to adopt and enforce floodplain management regulations governing new construction and substantial improvements in mapped floodplains.

If you are rebuilding after a storm, renovating, remodeling, or adding an addition to your home or business, here is information you need to know concerning substantial improvement and substantial damage.

Making Substantial Damage / Substantial Improvement Determinations

The purpose of the Substantial Damage (SD) / Substantial Improvement (SI) requirements is to protect the property owner's investment and safety; and to reduce the total number of buildings that are exposed to flood damage over time, thus reducing the burden on taxpayers through payment of disaster assistance. The SI/SD requirements are triggered when the local floodplain administrator determines that the cost of repairing or improving a building located within a Special Flood Hazard Area (SFHA) equals or exceeds 50% of the building's market value (excluding land value).

Substantial Damage (SD) means damage of any origin sustained by a structure whereby the cost of restoring the structure to pre-damaged condition would equal or exceed 50% of the market value of the structure before the damage occurred. Work on structures that are determined to be substantially damaged is considered a substantial improvement, regardless of the actual work performed. The cost of the repairs must include all costs necessary to fully repair the structure to its before-damage condition.

Substantial Improvement (SI) means any reconstruction, rehabilitation, addition, or other improvement of a structure, the cost of which equals or exceeds 50% of the market value of the structure before "start of construction" of the improvement. This term includes structures, which have incurred "substantial damage", regardless of the actual repair work performed. The term does not, however, include either: (1) any project for improvement of a structure to correct existing violations of state or local health, sanitary, or safety code specifications that have been identified by the local code enforcement official and which are the minimum necessary to assure safe living conditions, or (2) any alteration of a "historic structure", provided that the alteration will not preclude the structure's continued designation as a "historic structure". Once the cost of the work and the market value of the structure have been determined, the Floodplain Administrator will make a final determination of SI/SD. The work is determined to be SI/SD when the ratio of the cost of work to the market value equals or exceeds 50%.

If the local jurisdiction determines that improvements or repairs to a building constitute SI/SD, then the building must be brought into compliance with the NFIP floodplain management requirements for new construction.

The Local Jurisdiction's Responsibility

Communities that participate in the NFIP must determine whether proposed work qualifies as a substantial improvement or repair of substantial damage. If work on buildings constitutes SI/SD, then structures must be brought into compliance with NFIP requirements for “new construction,” including the requirement that the lowest floor be elevated one (1) foot above the base flood elevation (BFE). There are four (4) major actions our jurisdiction performs in administering the SI/SD requirements:

- Determine costs,
- Determine market values,
- Make SI/SD determinations, and
- Reviewing and approving applications for Flood Hazard Development Permits

Determining Costs

The term “costs of improvements” includes the complete costs associated with all of the types of work performed. The term “costs of repair” includes the costs of all work necessary to restore a damaged building to its pre-damaged condition. Both terms include the costs of all materials, labor, and other items necessary to perform the proposed work.

Costs That Must Be Included in SI/SD Determinations. The attached list, “*Included and Excluded Costs for Damage Repair Estimates*,” characterizes the types of costs that must be included in estimates that will be used to make SI/SD determinations.

Sources of Cost Information. The cost of improvements and the costs of repairs are necessary to make the SI/SD determination. The following are acceptable methods to determine the costs:

- Itemized costs of materials and labor, or estimates of materials and labor that are prepared by licensed contractors or professional construction cost estimators.
- Building owners may submit cost estimates that they prepare themselves. Owners will need to provide as much supporting documentation as possible, such as pricing information from lumber companies and hardware stores. The estimate must include the value of labor, including the value of the owner’s labor.

Donated/Discounted Materials. The value placed on all donated or discounted materials should be equal to the actual or estimated cost of such materials and must be included in the total cost. The applicant should provide cost estimates of the value of donated/discounted materials based on actual or estimated costs.

Owner/Volunteer Labor. The normal “market value” or “going rate” for labor must be included in the estimate of the cost of improvements and the costs to repair. The value placed on labor should be estimated based on applicable minimum-hour wage scales for the skill and type of construction work that is done.

Determining Market Value

Generally, “market value” can be explained as the price a willing seller and buyer agree upon. The market value of a building reflects its original quality, subsequent improvements, physical age of building components, and current condition. For purposes of determining SI/SD, market value pertains *only to the structure in question*. The value of the land, landscaping, detached accessory buildings, etc., are *not* included in the market value.

When work is an improvement, the market value is the building’s market value “before the ‘start of construction’ of the improvement.” When work is repair of substantial damage, the market value is the building’s market value “before the damage occurred.”

Acceptable estimates of market value can be obtained from these sources:

- Assessed value developed for property tax assessment purposes.
- Detailed estimates of the structure’s actual replacement cash value, including depreciation.
- An independent appraisal by a licensed professional appraiser.

The tax assessed value will customarily be used by the local jurisdiction unless the owner chooses to determine market value by a professional appraiser at the owner’s expense. Whatever method is used, the closer the estimate falls relative to the 50% threshold, the more precise the market value figure needs to be. In such circumstances, the local jurisdiction may require the owner to submit an appraisal from an independent professional appraiser.

If you have any questions about these requirements, contact your local jurisdiction:

Floodplain Administrator:

Jurisdiction:

Telephone:

Email:

This page intentionally left blank.

Included and Excluded Costs for Damage Repair Estimates

Included Costs

Items that must be included in the costs of improvement or costs to repair are those that are directly associated with the building. The following list of costs that must be included is not intended to be exhaustive, but characterizes the types of costs that must be included:

- Materials and labor, including the estimated value of donated or discounted materials and owner or volunteered labor
- Site preparation related to the improvement or repair (foundation excavation, filling in basements)
- Demolition and construction debris disposal
- Labor and other costs associated with demolishing, moving, or altering building components to accommodate improvements, additions, and making repairs
- Costs associated with complying with any other regulation or code requirement that is triggered by the work, including costs to comply with the requirements of the Americans with Disabilities Act (ADA)
- Costs associated with elevating a structure to an elevation that is lower than the base flood elevation (BFE)
- Construction management and supervision
- Contractor's overhead and profit
- Sales taxes on materials
- Structural elements and exterior finishes, including:
 - Foundations (e.g., spread or continuous foundation footings, perimeter walls, chainwalls, pilings, columns, posts, etc.)
 - Monolithic or other types of concrete slabs
 - Bearing walls, tie beams, trusses
- Structural elements and exterior finishes (cont.):
 - Joists, beams, subflooring, framing, ceilings
 - Interior non-bearing walls
 - Exterior finishes (e.g., brick, stucco, siding, painting, and trim)
 - Windows and exterior doors
 - Roofing, gutters, and downspouts
 - Hardware
 - Attached decks and porches
- Interior finish elements, including:
 - Floor finishes (e.g., hardwood, ceramic, vinyl, linoleum, stone, and wall-to-wall carpet over subflooring)
 - Bathroom tiling and fixtures
 - Wall finishes (e.g., drywall, paint, stucco, plaster, paneling, and marble)
 - Built-in cabinets (e.g., kitchen, utility, entertainment, storage, and bathroom)
 - Interior doors
 - Interior finish carpentry
 - Built-in bookcases and furniture
 - Hardware
 - Insulation
- Utility and service equipment, including:
 - HVAC equipment
 - Plumbing fixtures and piping
 - Electrical wiring, outlets, and switches
 - Light fixtures and ceiling fans
 - Security systems
 - Built-in appliances
 - Central vacuum systems
 - Water filtration, conditioning, and recirculation systems

Excluded Costs

Items that should be excluded are those that are not directly associated with the building. The following list characterizes the types of costs that may be excluded:

- Clean-up and trash removal
- Costs to temporarily stabilize a building so that it is safe to enter to evaluate required repairs
- Costs to obtain or prepare plans and specifications
- Land survey costs
- Permit fees and inspection fees
- Carpeting and re-carpeting installed over finished flooring such as wood or tiling
- Outside improvements, including landscaping, irrigation, sidewalks, driveways, fences, yard lights, swimming pools, pool enclosures, and detached accessory structures (e.g., garages, sheds, and gazebos)
- Costs required for the minimum necessary work to correct existing violations of health, safety, and sanitary codes
- Plug-in appliances such as washing machines, dryers, and stoves

**PROPERTY OWNER’S RIGHT OF ENTRY CERTIFICATION
AND RELEASE**

A floodplain permit is required for all construction activity in the Special Flood Hazard Area (SFHA) or that area inundated by the 1% annual chance of a flood, as designated by the National Flood Insurance Program (NFIP). These SFHAs are designated as A, AE, A1-A30, AH, or AO zones on the Flood Insurance Rate Maps (FIRMs). This includes construction for new or improved residential and non-residential structures, filling, and excavation.

I, the undersigned, being the owner of the land and all structures located at the address below

Address:

City, Zip:

Nebraska,

do hereby grant the local jurisdiction permission to inspect the property to determine the amount of damage and to comply with the NFIP Regulations for Substantial Damage Determinations, pursuant to Title 44 CFR., Section 60.3.

I, the undersigned, do hereby grant the local jurisdiction, its agents, servants, employees and assigns, for a period of 60 days or the completion of the substantial damage assessment, from the date of this document, permission to enter upon the above-identified land to accomplish substantial damage/improvement determinations.

In consideration of the substantial damage assessment conferred on me by the local jurisdiction, in said substantial damage/improvement determinations, I, the undersigned, do hereby release and forever discharge the local jurisdiction, its agents, servants, employees, and assigns from any and all claims, demands, or actions for damages for any and all personal injuries, or loss or damage to property sustained in or growing out of said inspections, and from complications arising therefrom. I also hereby agree to comply with the local jurisdiction’s Ordinance/Resolution No.

It is understood that the above mentioned substantial damage assessment and the terms of the release are fully understood and voluntarily accepted.

I HAVE READ THE FOREGOING RELEASE AND FULLY UNDERSTAND IT.

Signature	Print Name	Date
Witness	Print Name	Date

This page intentionally left blank.

Exterior Inspection Guide

Item	Required Evaluation
Depth of flooding inside and outside of the structure	<p>Examine all sides of the structure to locate a high water mark. If no high water mark is visible, check adjacent fences or vegetation for water, dirt, or debris line.</p> <p>Depending on the flood duration, the high water may be at different elevations inside and outside of the structure.</p>
Obvious roof damage	<p>Observe the roof for:</p> <ul style="list-style-type: none"> • Missing shingles or roof covering • Roof sheathing movement
Less obvious roof damage	<p>Observe the roof for warping of the roof sheathing due to lost or damaged shingles. This can be viewed by stepping back from the structure and looking at the roof surface for ripples and sunken or raised areas. This type of damage may require replacement of a significantly large portion of the roof sheathing and shingles. The inspector will need to determine if the roof damage was disaster related or due to poor maintenance. Maintenance-related damage can be addressed by the selection of the depreciation rating as part of the assessment.</p>
Foundation damage	<p>Examine the foundation for settlement, lateral movement, or cracking that affects structural stability.</p> <p>Determine whether the structure has become separated from the foundation.</p>
Post, pier, or column damage and an evaluation of the floor stability	<p>Examine these elements for structures built on a continuous wall with slab, crawlspace, piles, and piers and posts foundation types.</p>
Exterior wall damage	<p>Observe for holes or damage affecting the structural integrity of the superstructure.</p>

This page intentionally left blank.

Interior Inspection Guide

Element	Description	What to Look For
Foundation (residential and non-residential structures)	Damage that is significant enough to affect the overall structural stability of the foundation.	Settlement, lateral displacement, or cracking not visible from the exterior. This is especially important for homes with basements or crawlspace foundations. Check for foundation damage that may not be visible during the exterior inspection.
Superstructure (residential and non-residential structures)	Damage that either currently or in the future could affect the structural stability of the structure, including the wall support systems as well as roof trusses and framing.	<p>Wall support system: Deformation or distortion of the structural frame that is not visible from the exterior</p> <p>Roof support system:</p> <ul style="list-style-type: none"> For intact ceilings, look for sagging, water marks, dripping water, or other damage that may indicate truss or roof framing damage. For removed ceilings, view the truss and roof framing for damage.
Roof covering (residential and non-residential structures)	Damage to the roof sheathing, shingles/tiles, flashing, or other elements that are part of the roof covering.	Sagging, water marks, and dripping water could indicate roof covering damage. Also, look for daylight entering through holes in the roof or warped sheathing not visible from the exterior.
Interior finish (residential) Interiors (non-residential)	<p>Damage should be evaluated for a height above the interior high water mark.</p> <p>For two-story homes with similar square footage on each floor, the first floor accounts for approximately 50 percent of the total quantity of these interior finish items in the house.</p> <p>All painted, stained, papered, or paneled surfaces touched by floodwaters are assumed to at least require cleaning, sanding, and resurfacing.</p>	Damaged, broken, or warped interior walls or framing studs (windows, doors, or closets). Inspectors should check for wicking of water or moisture inside of drywall and insulation at a level above the interior high water mark. All wet insulation and drywall should be removed and disposed of properly.
Doors and windows (residential only)	Depending on the flood duration, these items will require either a small amount of cleanup plus paint/stain or total replacement due to warping.	Damaged, broken, warped, or removed doors and windows

Interior Inspection Guide Cont.

Element	Description	What to Look For
Cabinets and counter tops (residential only)	Depending on the flood duration, these items will either require a small amount of cleanup, sanding, and new stain or paint for cabinets or total replacement due to warping.	<p>Damaged, broken, warped, mold-covered, or removed cabinets and counter tops.</p> <p>Note: The amount of damage for cabinets should reflect the depth of flooding above the floor. If the flood depth did not reach the upper cabinets, the percent damaged should be based on the floor level cabinets only. If only the lower cabinets are damaged but the owner prefers to replace both upper and lower cabinets so that they match, that is irrelevant for the cabinet damage entered into the SDE tool.</p>
Floor finish (residential only)	With the exception of ceramic and marble tile, almost all floor coverings and sub-flooring that get wet will need to be replaced.	Discolored, warped, cut, damaged, broken, or missing flooring.
Plumbing (residential and non-residential structures)	With the exception of broken fixtures or sections of pipe, many of these items can be flushed with disinfectant, cleaned on the outside, and used again.	<p>Cracked, dented, misaligned, leaking, broken, or missing sections of pipe or fixtures such as toilets, sinks, tub, and showers.</p> <p>Contamination of water supplies.</p>
Electrical (residential and non-residential structures)	Depending on the depth of flooding, there may only be a need to replace fixtures such as outlets, switches, lights, or a junction/fuse box below a certain flood elevation. All electrical wiring exposed to salt water should be replaced.	Corroded, exposed, disconnected, broken, missing, or non-functioning items and fixtures.
Built-in appliances (residential only)	Depending on the depth of flooding, these may require only a cleanup with disinfectant plus a small amount of repairs or may require total replacement.	Damaged, water-logged, broken, non-functioning, or removed appliances.
HVAC (residential and non-residential structures)	Depending on the depth of flooding, this may require only a cleanup with disinfectant plus a small amount of repairs or may require total replacement.	Damaged, water-logged, broken, non-functioning, or removed heating-cooling units.

Curbside Review Quick Assessment Tool

To aid in the speed and consistency of the curbside review process after a flooding disaster, consider using the Curbside Review Quick Assessment Tool. *This tool is not intended to replace a substantial damage inspection.* It is designed to be used as a screening tool so that the property owner may be notified as soon as possible as to the potential status of their property, and so that a substantial damage inspection schedule may be developed from the best information available.

Approximate Percent Damage X Flood Depth

Flood Depth:	0.25'	0.5'	1'	2'	3'	4'	>5'	Two Story =
Super-structure	10	10	10	10	25	25	50	*
Exterior Finish	0	5	10	30	40	50	50	*
Interior Finish	0	5	10	30	40	50	100	*
Doors & Windows	0	10	15	40	40	75	100	*
Cabinets & Counters	0	20	50	50	50	70	100	
Flooring	100	100	100	100	100	100	100	*
Plumbing	0	0	20	30	30	30	50	**
Electrical	0	0	0	20	30	60	80	**
Built-in Appliances	0	0	50	100	100	100	100	
HVAC	0	0	80	80	80	80	80	
Foundation:	Basement or Crawlspace							
	10%	Minor clean-up, re-seal, or paint						
	50%	If cracked, bowed, or fractured on 1 or more walls						
	100%	If structural damage such as blow-out or caved-in walls						
	Slab-on-Grade							
	10%	Foundation <i>not</i> undermined						
	30%	Foundation <i>is</i> undermined						
	75%	Foundation is broken, bowed, or uplifted						

* Reduce by 40 - 50% for two story home

** Reduce by 25% for two story home

For split-level buildings, use your best judgment for any adjustments to the damage percentages.

This page intentionally left blank.

Percent Damage Estimation Tables

The SDE requires the inspector to estimate the percent of damage for various building components. The information compiled below can be used with the SDE worksheet to quickly calculate substantial damage. **The percentages in the table are based on 1-story house without a basement that has experienced medium-height freshwater flooding of limited duration.**

Please note that a more thorough damage estimation guide for both residential and non-residential structures can be found in Appendix E, “Guidance for Estimating Percent Damage for Residential Structures,” and Appendix F, “Guidance for Estimating Percent Damage for Non-Residential Structures,” in **FEMA P-784 Substantial Damage Estimator User Manual and Field Workbook**.

Estimated Percentage Damage Range

		0% - 25%	25% - 50%	50% - 75%	75% - 100%	
FOUNDATION						
Continuous perimeter foundations, footings, and piers for internal beams and floor loads. Footing depth averages between 30 inches and 42 inches below ground level. Materials include unreinforced cast-in-place concrete, unreinforced masonry or concrete masonry units (CMUs), concrete slab on grade, or raised slab construction.		<ul style="list-style-type: none">Water level does not rise to the level of the bottom of the first floor of the structure.No scouring at the footings.Some undermining but no visible cracking at concrete slab.	<ul style="list-style-type: none">Water level rises just above first floor level.Limited scouring at the footings.Soils are saturated.Undermining of the concrete slab, especially at corners - hairline cracks only.	<ul style="list-style-type: none">Water level is 4-7 feet against the outside of the building.Limited scouring at the footings.Soils are saturated and unstable.Cracks noted on or along the foundation walls.Significant undermining of the concrete slab – significant cracking is visible.	<ul style="list-style-type: none">Water level is 7 feet or higher against the outside of the building.Limited scouring at the footings.Foundation is notably cracked and/or displaced. Structure has been knocked off its foundation.Portions of the foundation are damaged or missing.Significant undermining of the concrete slab - major cracking and separation of the concrete slab.	
SUPERSTRUCTURE						
For wood frame & masonry. The wall support systems that extend from the foundation wall to the roof structure. Superstructures include the exterior wall sheathing panels, shear panels, or braced wall panels. This section also includes structural members that support the roof (rafters and trusses), but does not include the roof sheathing.		<ul style="list-style-type: none">Water level does not rise to the level of the bottom of the first floor of the structure.No damage to the roof framing.	<ul style="list-style-type: none">Water level rises just above first floor level.Damage to the exterior walls is limited.Damage to the roof framing is limited.	<ul style="list-style-type: none">Water level is up to 3 feet high on the first floor level.Some damage to exterior walls.Significant damage to sections of the roof framing.	<ul style="list-style-type: none">Water is over 3 feet high on the first floor level of the house.Significant damage to exterior walls.Significant damage to the main portion or multiple sections of the roof framing.	

Estimated Percentage Damage Range

		0% - 25%	25% - 50%	50% - 75%	75% - 100%
ROOF COVERING					
Roofing includes a lightweight composition shingle, tile roofs, metal roofs, or a built-up roof with gravel or rock cover material. Roofing does not include structural framing members such as rafters or prefabricated trusses that support the roof deck. The roof sheathing and flashing is included in this section.	<ul style="list-style-type: none">Minor wind damage to the roof coverings.Main surface areas are unaffected.Flashings are intact.No damage to the roof sheathing.	<ul style="list-style-type: none">Some damaged areas of the roof from high-winds or damage from debris.Some sections of the roof covering are missing or loose.Some damage to the flashings.Minimal damage to the roof sheathing.	<ul style="list-style-type: none">Significant damaged areas of the roof from high winds or damage from debris.Significant sections of the roof covering are missing or loose.Damage to the flashings allows some water infiltration at joints and roof penetrations.Significant damage to the roof sheathing - some areas of the sheathing will need replacement.	<ul style="list-style-type: none">Large damaged areas of the roof from high winds or damage from debris.Major sections of the roof covering are missing or loose.Damage to the flashings allows significant water infiltration at joints and roof penetrations.Major damage to the roof sheathing - most of the roof sheathing will need replacement.	
EXTERIOR FINISH					
The wall covering system that covers the wall sheathing, as well as insulation and weather stripping. This includes the water resistant materials and the finish materials: Stucco, Siding (aluminum, vinyl, or wood), Masonry, Stone veneer. Insulation is installed at the flooring beneath the lowest floor level and throughout the walls and ceilings.	<ul style="list-style-type: none">Water level is less than 6 inches above the lowest floor level.The duration of the floodwaters is limited - less than 12 hours.	<ul style="list-style-type: none">Water level is between 6 and 18 inches above the lowest floor level.The duration of the floodwaters is limited - less than 12 hours.	<ul style="list-style-type: none">Water level is between 18 inches and 3 feet above the lowest floor level.The duration of the floodwaters is more than 12 hours.	<ul style="list-style-type: none">Water level is more than 3 feet above the lowest floor level.The duration of the floodwaters is more than 12 hours.	

Estimated Percentage Damage Range

		0% - 25%	25% - 50%	50% - 75%	75% - 100%
INTERIOR FINISH	<p>Interior finish includes the gypsum board, drywall, plaster, or paneling that makes up the wall surfaces. It also includes trim around door baseboards, casings, chair rails, and ceiling moldings. Materials include low-grade wood/plastic composites, soft woods, and hard woods. Finishes include paint, stain, or varnish.</p>	<ul style="list-style-type: none">Water level does not rise to the level of the first floor structure.The duration of the floodwaters is limited - less than 12 hours.	<ul style="list-style-type: none">Water level rises just above the first floor level.The duration of the floodwaters is limited - less than 12 hours.	<ul style="list-style-type: none">Water level is up to 3 feet above the first floor level.The duration of the floodwaters is more than 12 hours.	<ul style="list-style-type: none">Water is more than 3 feet above the first floor level of the house.The duration of the floodwaters is more than 12 hours.
DOORS AND WINDOWS	<p>This section includes all doors and windows of a structure, as well as locks, hinges, frames, and handles. Assumptions are hollow core doors with low-cost hardware for low, fair, and average quality construction, raised-panel hardwood veneer with good quality hardware for good or excellent quality construction. (This section does not include paint or stain.)</p>	<ul style="list-style-type: none">Water level rises just to the floor structure of the first floor level.The duration of the floodwaters is limited - less than 12 hours.	<ul style="list-style-type: none">Water level is just above the first floor.The duration of the floodwaters is limited - less than 12 hours.	<ul style="list-style-type: none">Water rises to at least 12 inches above the first floor level.The duration of the floodwaters is more than 12 hours.	<ul style="list-style-type: none">Water rises more than 12 inches above the first floor level.The duration of the floodwaters is more than 12 hours.

Estimated Percentage Damage Range

0% - 25%	25% - 50%	50% - 75%	75% - 100%
----------	-----------	-----------	------------

CABINETS AND COUNTERTOPS

The basic cabinets for bathroom vanities and kitchens include paint-grade cabinets made of a fiberboard or plywood material. The counter top is laminated plastic or a man-made 'cultured stone' surface.

- Water level is less than 4 inches above the finished floor level.
- Water level is between 4 and 12 inches above the finished floor level.
- Flood duration is short - no prolonged exposure to water or contaminants.
- Water level is between 1 foot and 3 feet above the finished floor level.
- Flood duration is longer than 12 hours - prolonged exposure to water and contaminants.
- Water level is more than 3 feet above finished floor level.
- Flood duration is longer than 12 hours - prolonged exposure to water and contaminants.

FLOOR FINISH

Materials for floor finish include: carpet, hardwood, vinyl composition tile, sheet vinyl floor cover, ceramic tile, and marble. Sub-flooring is also included. Carpeting, hardwood flooring, vinyl flooring tiles, and sheet vinyl are typically replaced after water inundation. Brick, stone, and clay tile floor can be cleaned, sanitized, and reused.

- Water level does not rise to the level of the bottom of the first floor structure.
- No damage to the floor sheathing.
- Water level rises just to the first floor level.
- Water level inundates the sub-flooring but does not rise to the finished floor materials.
- Minimal damage to the floor sheathing.
- Water level is above the first floor.
- Water level inundates above the sub-flooring and finished floor materials.
- Significant damage to the floor sheathing - some areas of the sheathing will need replacement.
- Water level is well above the first floor.
- Water level inundates above the sub-flooring and finished floor materials.
- Major damage to the floor sheathing - most of the floor sheathing will need replacement.

Estimated Percentage Damage Range

0% - 25%		25% - 50%		50% - 75%		75% - 100%		
PLUMBING								
The plumbing system includes the incoming water service (municipal water supply or well service), the water heater, water distribution piping, and the wastewater system. Wastewater will be conveyed away from the structure by either a connection to the municipal sewer system or a septic system.	• Water level is less than 6 inches above the lowest floor level.		• Water level is between 6 inches and 18 inches above the lowest floor level.		• Water level is between 18 inches and 3 feet above the lowest floor level.		• Water level is more than 3 feet above the lowest floor level.	
	• Flood duration is short - no prolonged exposure to water or contaminants.		• Flood duration is longer than 12 hours - prolonged exposure to water and contaminants.		• Flood duration is longer than 12 hours - prolonged exposure to water and contaminants.		• Flood duration is longer than 12 hours - prolonged exposure to water and contaminants.	
ELECTRICAL								
100- to 200-amp electrical service providing circuit breaker panels and distribution wiring. Basic wiring (15/20 amp) for outlets, switches, receptacles, and lighting; 25- to 60-amp wiring systems for outlets for a washer, dryer, stove, and refrigerator.	• Water level is less than 12 inches above the finished floor level.		• Water level is between 12 inches and 18 inches above the finished floor level.		• Water level is between 18 inches and 3 feet above the lowest floor level.		• Water level is more than 3 feet above the lowest floor level.	
	• Minor electrical components and limited wiring are inundated but remain below normal receptacle height.		• A significant number of wiring components and limited wiring are inundated, floodwaters above the normal receptacle height.		• A significant number of wiring components and a significant amount of wiring is inundated - floodwaters above normal wall switch height.		• Most of the wiring components and a significant amount of wiring are inundated - floodwaters above normal wall switch height.	

Estimated Percentage Damage Range

		0% - 25%	25% - 50%	50% - 75%	75% - 100%
APPLIANCES					
Common, built-in appliances that would be included are the dishwasher, hot water tank, and some stoves.	•	Water level is less than 6 inches above the finished floor level.	•	Water level is between 6 inches and 12 inches above the finished floor level.	•
	•	Water level is in the floor area of the appliances but not into the equipment operating system.	•	Water level is in the floor area of the appliances and into the equipment operating system.	•
	•	The appliances may be cleaned and reconditioned.	•	Some of the appliances will need to be replaced.	•
HVAC					
The base HVAC system is a forced-air heating system (furnace) with ductwork. The air handler system is located inside the thermal barrier of the house. The percent damaged will be less for a boiler. A gas-fired or oil-fired furnace located in a basement or crawlspace will require replacement of the furnace assembly as soon as 12 inches of floodwaters are present.	•	Water level is less than 6 inches above the lowest floor level.	•	Water level is between 6 inches and 12 inches above the finished floor level.	•
	•	Water level is in the lower ducts but not into the air handler or equipment operating system.	•	Water level is into the lower ducts and the air handler, but not into the equipment operating system.	•
	•	The condenser unit may be reconditioned if the water level is less than 6 inches from the bottom of the appliance. If the condenser unit is located below the flood level, it will need to be replaced.	•	The condenser unit may be reconditioned if the water level is up to 12 inches from the bottom of the appliance. If the condenser unit is located below the flood level, it will need to be replaced.	•
	•	Water level is less than 6 inches above the lowest floor level.	•	Water level is between 6 inches and 12 inches above the finished floor level.	•
	•	Water level is in the lower ducts but not into the air handler or equipment operating system.	•	Water level is into the lower ducts, air handler, and the equipment operating system.	•
	•	The condenser unit may be reconditioned if the water level is less than 6 inches from the bottom of the appliance. If the condenser unit is located below the flood level, it will need to be replaced.	•	The fuel-fired equipment (burners/controls) is inundated. The condenser unit needs to be replaced.	•

This page intentionally left blank.

SDA Damage Inspection Worksheet - Residential -

COMMUNITY	STRUCTURE	INSPECTION
NFIP Community ID (CID):	Structure Address:	Inspector Name:
NFIP Community Name:		Team #:
Latitude:	City:	Assessment Date:
Longitude:	Zip:	Date Damaged:
	County:	

PHOTOS					
Photo #:	Direction facing:	<input type="radio"/> Northwest	<input type="radio"/> North	<input type="radio"/> Northeast	<input type="radio"/> East
		<input type="radio"/> West	<input type="radio"/> Southwest	<input type="radio"/> South	<input type="radio"/> Southeast
Photo #:		<input type="radio"/> Northwest	<input type="radio"/> North	<input type="radio"/> Northeast	<input type="radio"/> East
		<input type="radio"/> West	<input type="radio"/> Southwest	<input type="radio"/> South	<input type="radio"/> Southeast

STRUCTURE ATTRIBUTES	Year Constructed:
Residence Type:	<input type="radio"/> Single Family Residence <input type="radio"/> Town or Row House <input type="radio"/> Manufactured House
Exterior:	<input type="radio"/> One Story <input type="radio"/> Two or More Stories
Foundation:	<input type="radio"/> Continuous Wall + Slab <input type="radio"/> Basement <input type="radio"/> Crawlspace <input type="radio"/> Piles <input type="radio"/> Slab-on-Grade <input type="radio"/> Piers and Posts
Superstructure:	<input type="radio"/> Stud-Framed <input type="radio"/> ICF <input type="radio"/> Common Brick <input type="radio"/> Masonry
Roof Coverings:	<input type="radio"/> Shingles <input type="radio"/> Standing Seam (Metal) <input type="radio"/> Clay Tile <input type="radio"/> Slate
Exterior Finish:	<input type="radio"/> Siding or Stucco <input type="radio"/> Exterior Insulated Finishing System (EIFS) <input type="radio"/> None (Common Brick or Structural) <input type="radio"/> Brick Veneer
HVAC System:	<input type="radio"/> None <input type="radio"/> Heating or Cooling
Quality:	<input type="radio"/> Low <input type="radio"/> Budget <input type="radio"/> Average <input type="radio"/> Good <input type="radio"/> Excellent
Cause of Damage:	<input type="radio"/> Fire <input type="radio"/> Flood <input type="radio"/> Flood and Wind <input type="radio"/> Seismic <input type="radio"/> Wind <input type="radio"/> Other
Flood Duration:	<input type="radio"/> Hours <input type="radio"/> Days
Flood Depth Above Ground: (Decimal Ft.)	Flood Depth Above 1st Floor: (Decimal Ft.)

SDA Damage Inspection Worksheet Cont. - Residential -

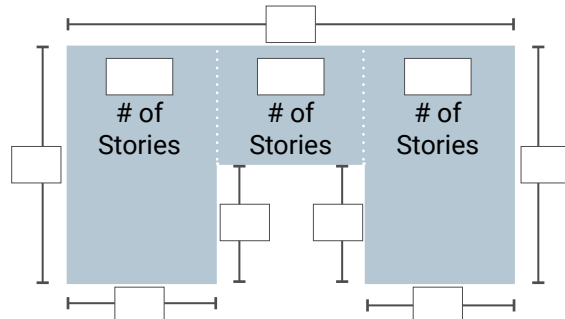
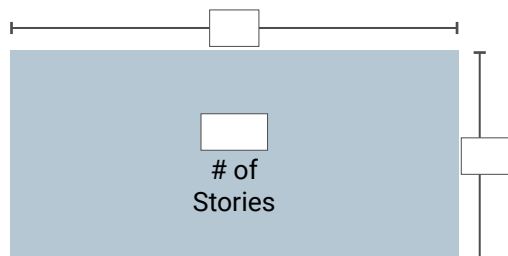
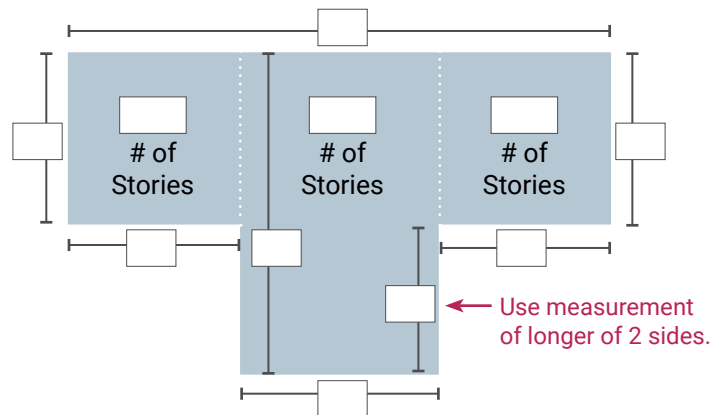
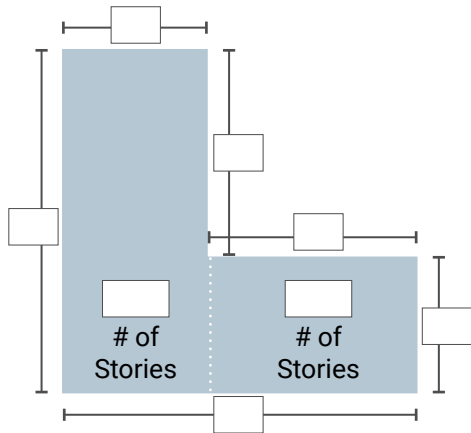
DEPRECIATION RATING

- | | | |
|--|---|------------------------------|
| <input type="radio"/> Very Poor Condition | <input type="radio"/> Average Condition | <input type="radio"/> Other: |
| <input type="radio"/> Requires Extensive Repairs | <input type="radio"/> Above Average Condition | |
| <input type="radio"/> Requires Some Repairs | <input type="radio"/> Excellent Condition | |

ELEMENT PERCENTAGES

Element	Percent Damaged	Element	Percent Damaged
Foundation:	<input type="text"/>	Floor Finish:	<input type="text"/>
Superstructure:	<input type="text"/>	Plumbing:	<input type="text"/>
Roof Covering:	<input type="text"/>	Electrical:	<input type="text"/>
Exterior Finish:	<input type="text"/>	Appliances:	<input type="text"/>
Doors & Windows:	<input type="text"/>	Interior Finish:	<input type="text"/>
Cabinets & Counter tops:	<input type="text"/>	HVAC:	<input type="text"/>

SQ. FOOTAGE CALCULATOR



SDA Damage Inspection Worksheet - Non-Residential -

COMMUNITY	STRUCTURE	INSPECTION
NFIP Community ID (CID):	Structure Address:	Inspector Name:
NFIP Community Name:		Team #:
Latitude:	City:	Assessment Date:
Longitude:	Zip:	Date Damaged:
	County:	

PHOTOS	
Photo #:	Direction facing: <input type="radio"/> Northwest <input type="radio"/> North <input type="radio"/> Northeast <input type="radio"/> East <input type="radio"/> West <input type="radio"/> Southwest <input type="radio"/> South <input type="radio"/> Southeast
Photo #:	<input type="radio"/> Northwest <input type="radio"/> North <input type="radio"/> Northeast <input type="radio"/> East <input type="radio"/> West <input type="radio"/> Southwest <input type="radio"/> South <input type="radio"/> Southeast

STRUCTURE ATTRIBUTES		Year Constructed:	
Story:	<input type="radio"/> 1 <input type="radio"/> 2 through 4 <input type="radio"/> 5 or more		
Use:	<input type="radio"/> Apartments <input type="radio"/> Auditorium <input type="radio"/> Commercial Retail <input type="radio"/> Convenience Store <input type="radio"/> Courthouse <input type="radio"/> Department Store <input type="radio"/> Elementary School <input type="radio"/> Fast Food Restaurant	<input type="radio"/> Fire/Police Station <input type="radio"/> Grocery Store <input type="radio"/> High School <input type="radio"/> Hospital <input type="radio"/> Hotel <input type="radio"/> House of Worship <input type="radio"/> Industrial <input type="radio"/> Long-Term Care Facility	<input type="radio"/> Mini-Warehouse <input type="radio"/> Motel <input type="radio"/> Municipal Building <input type="radio"/> Office Building <input type="radio"/> Police Station <input type="radio"/> Restaurants <input type="radio"/> Strip Mall
Sprinkler System:	<input type="radio"/> Yes <input type="radio"/> No	Conveyance (Elevator/Escalator):	<input type="radio"/> Yes <input type="radio"/> No
Quality:	<input type="radio"/> Low <input type="radio"/> Good	<input type="radio"/> Budget <input type="radio"/> Excellent	<input type="radio"/> Average
Cause of Damage:	<input type="radio"/> Fire <input type="radio"/> Seismic	<input type="radio"/> Flood <input type="radio"/> Wind	<input type="radio"/> Flood and Wind <input type="radio"/> Other
Flood Duration:		<input type="radio"/> Hours <input type="radio"/> Days	
Flood Depth Above Ground:		Flood Depth Above 1st Floor:	

SDA Damage Inspection Worksheet Cont. - Non-Residential -

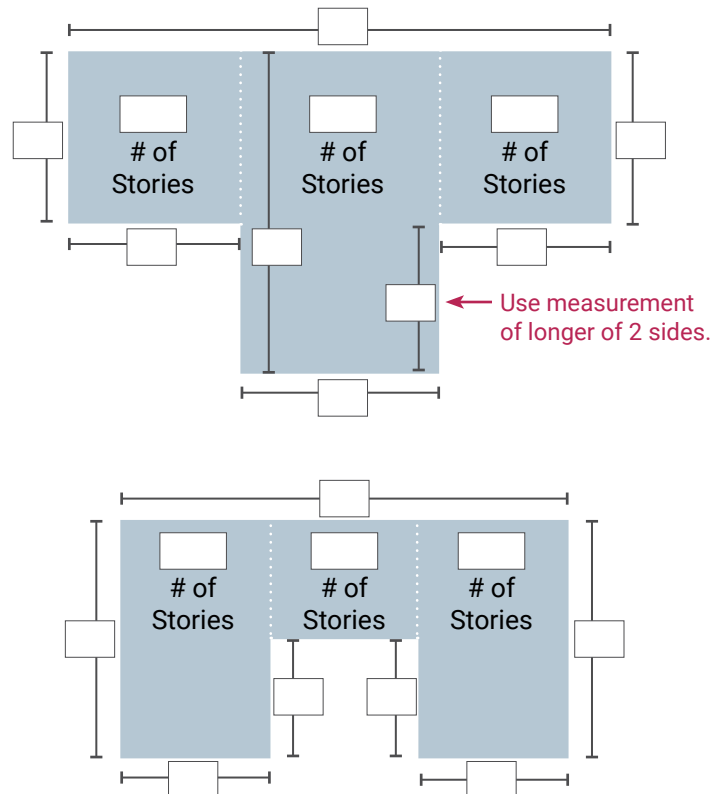
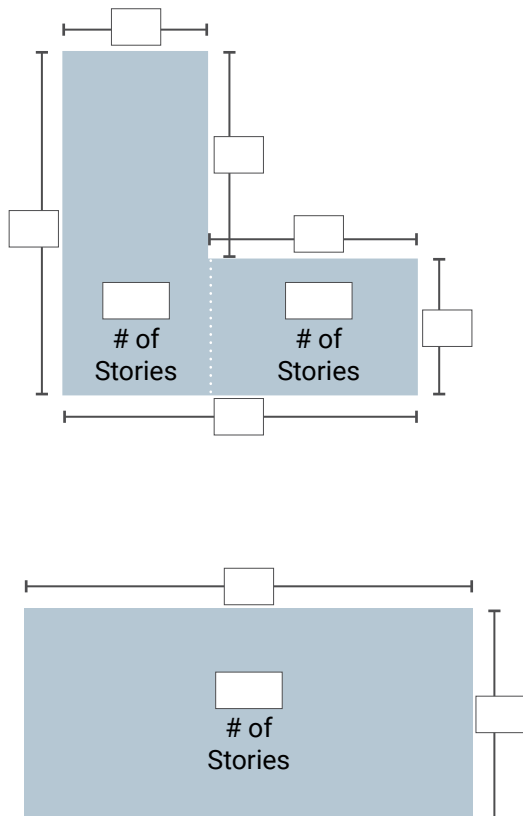
DEPRECIATION RATING

- | | | |
|--|---|------------------------------|
| <input type="radio"/> Very Poor Condition | <input type="radio"/> Average Condition | <input type="radio"/> Other: |
| <input type="radio"/> Requires Extensive Repairs | <input type="radio"/> Above Average Condition | |
| <input type="radio"/> Requires Some Repairs | <input type="radio"/> Excellent Condition | |

ELEMENT PERCENTAGES

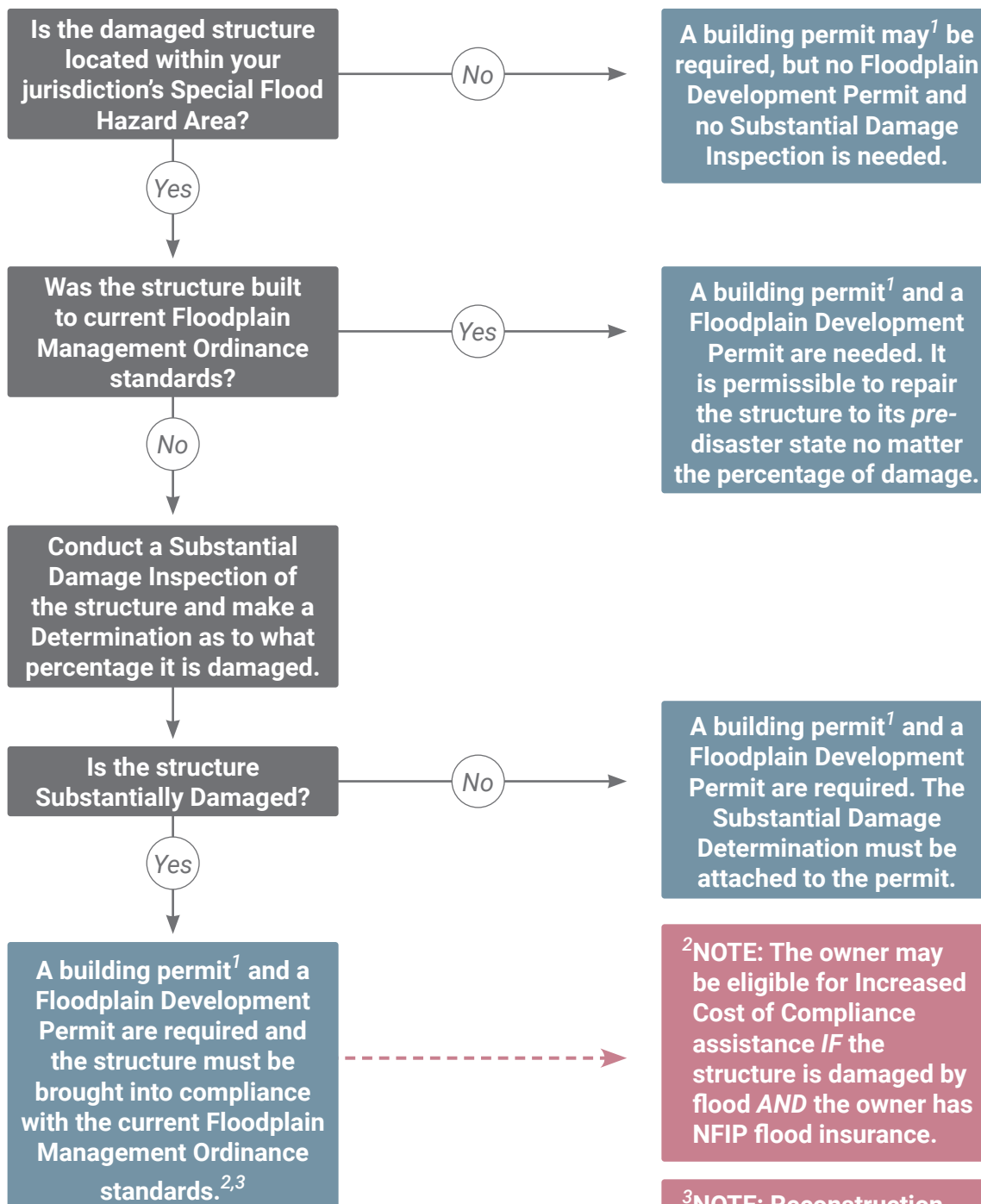
Element	Percent Damaged	Element	Percent Damaged
Foundation:	<input type="text"/>	Electrical:	<input type="text"/>
Superstructure:	<input type="text"/>	Interiors	<input type="text"/>
Roof Covering:	<input type="text"/>	HVAC:	<input type="text"/>
Plumbing:	<input type="text"/>		

SQ. FOOTAGE CALCULATOR



SD Assessment and Permit Requirement Decision Tree:

START:



¹Not all jurisdictions require building permits.

This page intentionally left blank.

Flood-Related Substantial Damage Determination Letter:

[Jurisdiction Name]
[Jurisdiction Address Line 1]
[Jurisdiction Address Line 2]

[Date]

[Property Owner Name]
[Property Owner Address Line 1]
[Property Owner Address Line 2]

Subject: Damage Estimation for Property Located at [Property Address and Parcel No.]

Dear [Property Owner],

On [date], the subject property was damaged by a flood. We regret your loss and the damage your property has sustained.

Your property is located in Flood Zone [A, AE, A1-30, AH, AO]. When a property in a flood zone is damaged, the local jurisdiction is required to perform a substantial damage assessment in accordance with [Ordinance/Regulation/Resolution and No.]. The damage assessment determination for your property is [percentage]. This number is based on the ratio of the cost to repair the structure to its pre-flood market value. The fair market value of your structure was determined to be [dollar amount]. The cost to repair is estimated to be [dollar amount]. Please see the documentation attached.

Because the damage to your building has been determined to be greater than 50% of fair market value, your building has been determined to be *substantially damaged*. Substantially damaged properties are required to be brought into full compliance with floodplain regulations found in [Ordinance/Regulation/Resolution and No.]. Residential structures must be elevated [height freeboard] above the base flood elevation (BFE) . Non-Residential structures must be flood-proofed or elevated to [height freeboard].

We are sure you want to repair your property as soon as possible, and we will try to make the permitting process as easy as we can for you. Prior to beginning repairs to your structure, please complete the required Floodplain Development Permit Application (enclosed). Failure to obtain a required permit is a violation of [Ordinance/Regulation/Resolution and No.].

You are welcome to contact this office to schedule a consultation to discuss your options for bringing the building into compliance. Increased Cost of Compliance (ICC) funds could be available for those who have flood insurance through the National Flood Insurance Program (NFIP). Contact your claims adjuster for details.

Flood-Related Substantial Damage Determination Letter (Cont.):

If you disagree with the damage assessment, you may submit an appeal by [date]. An appeal requires additional information such as [contractor estimates/insurance adjusted claim/ licensed appraisal/other]. Details about an appeal and about how the damage estimation was completed can be discussed in more detail by calling this office.

[Local jurisdiction] participates in the National Flood Insurance Program. Failing to enforce floodplain damage requirements puts [local jurisdiction] in jeopardy of losing flood insurance, disaster assistance and federally backed loans and grants for all our citizens.

Thank you in advance for your cooperation and assistance at a difficult time.

Sincerely,

[Name Community Official], Floodplain Manager
[Contact Information]

CC: [City Attorney/County Attorney]
Enclosed: [Ordinance/Regulation/Resolution and No.]
[Damage determination worksheets / documentation]
[Floodplain Development Permit]

Non-Flood Related Substantial Damage Determination Letter:

[Jurisdiction Name]
[Jurisdiction Address Line 1]
[Jurisdiction Address Line 2]

[Date]

[Property Owner Name]
[Property Owner Address Line 1]
[Property Owner Address Line 2]

Subject: Damage Estimation for Property Located at [Property Address and Parcel No.]

Dear [Property Owner],

On [date] the subject property was damaged by [fire / tornado / wind / other]. We regret your loss and the damage your property has sustained.

Your property is located in Flood Zone [A, AE, A1-30, AH, AO]. When a property in a flood zone is damaged, the local jurisdiction is required to perform damage assessment in accordance with [Ordinance/Regulation/Resolution and No.]. The damage assessment determination for your property is [percentage] damaged. This number is based on the ratio of the cost to repair the structure to its pre-flood market value. The fair market value of your structure was determined to be [dollar amount]. The cost to repair is estimated to be [dollar amount]. Please see the documentation attached.

We are sure you want to repair your property as soon as possible, and we will try to make the permitting process as easy as we can for you. Prior to beginning repairs to your structure, please complete the required Floodplain Development Permit Application (enclosed). Failure to obtain a required permit is a violation of [Ordinance/Regulation/Resolution and No.].

Because the damage to your building has been determined to be greater than 50% of fair market value, your building has been determined to be *substantially damaged*. Substantially damaged properties are required to be brought into full compliance with floodplain regulations found in [Ordinance/Regulation/Resolution and No.]. Residential structures must be elevated [height freeboard] above the base flood elevation (BFE) . Non-Residential structures must be flood-proofed or elevated to [height freeboard].

If you disagree with the damage estimation there is an appeal process, you may submit an appeal by [date]. An appeal will require additional information such as [contractor estimates/ insurance adjusted claim/licensed appraisal/other]. Details about an appeal and about how the damage estimation was completed can be discussed in more detail by calling this office.

Non-Flood Related Substantial Damage Determination Letter (Cont.):

[Local jurisdiction] participates in the National Flood Insurance Program. Failing to enforce floodplain damage requirements puts [local jurisdiction] in jeopardy of losing flood insurance, disaster assistance and federally backed loans and grants for all our citizens.

Thank you in advance for your cooperation and assistance at a difficult time.

Sincerely,

[Name Community Official], Floodplain Manager
[Contact Information]

CC: [City Attorney/County Attorney]
Enclosed: [Ordinance/Regulation/Resolution and No.]
[Damage determination worksheets / documentation]
[Floodplain Development Permit]

Compliant Structure / Non-Substantial Damage Determination Letter:

[Date]

[Property Owner Name]
[Property Owner Address Line 1]
[Property Owner Address Line 2]

Subject: Damage Estimation for Property Located at [Property Address and Parcel No.]

Dear [Property Owner],

On [date] the subject property was damaged by [fire / tornado / wind / other]. We regret your loss and the damage your property has sustained.

Your property is located in Flood Zone [A, AE, A1-30, AH, AO]. When a property in a flood zone is damaged, the local jurisdiction is required to perform substantial damage assessment in accordance with [Ordinance/Regulation/Resolution and No.].

The damage assessment determination for your property is [percentage] damaged. This number is based on the ratio of the cost to repair the structure to its pre-flood market value. The fair market value of your structure was determined to be [dollar amount]. The cost to repair is estimated to be [dollar amount]. Please see the documentation attached.

We are sure you want to repair your property as soon as possible, and we will try to make the permitting process as easy as we can for you. Prior to beginning repairs to your structure, please complete a Floodplain Development Permit (enclosed), as a floodplain development permit is required. Failure to obtain a required permit is a violation of [Ordinance/Regulation/Resolution and No.].

If you disagree with the damage estimation there is an appeal process, you may submit an appeal by [date]. An appeal will require additional information such as [contractor estimates/ insurance adjusted claim/licensed appraisal/other]. Details about an appeal and about how the damage estimation was completed can be discussed in more detail by calling this office.

[Local jurisdiction] participates in the National Flood Insurance Program. Failing to enforce floodplain damage requirements puts [local jurisdiction] in jeopardy of losing flood insurance, disaster assistance and federally backed loans and grants for all our citizens.

Thank you in advance for your cooperation and assistance at a difficult time.

Sincerely,

[Name Community Official], Floodplain Manager
[Contact Information]

CC: [City Attorney/County Attorney]
Enclosed: [Ordinance/Regulation/Resolution and No.]
[Damage determination worksheets / documentation]
[Floodplain Development Permit]

This page intentionally left blank.

Floodplain Damage / Improvement Cost Form: All Structures

Property Information	Contractor Information
Owner Name	Company
Property Address	Contractor Name
City, State, Zip	Address
Phone	City, State, Zip
Email	Phone
Disaster Name / Type	Email
	Contractor Registration #

Costs That Must Be Included in Floodplain SI/SD Determination			
<i>Labor and materials, including sales tax</i>			
Exterior:		Utilities:	
\$	Site preparation	\$	HVAC Equipment
\$	Foundation / slab	\$	Plumbing fixtures & piping
\$	Beams, subflooring, & roof joists	\$	Electrical wiring, outlets, & switches
\$	Roof, gutters, & downspouts	\$	Light fixtures & ceiling fans
\$	Walls, tie beams, trusses	\$	Security systems
\$	Exterior finishes	\$	Built-in appliances
\$	Windows & Exterior doors	\$	Central vacuum systems
\$	Hardware	\$	Water filtration, conditioning, & recirculation systems
\$	Attached decks & porches		
Interior:		Other:	
\$	Flooring & subflooring	\$	Construction debris disposal
\$	Bathroom fixtures	\$	Other:
\$	Drywall & Wall finished		
\$	Built-in cabinets	\$	Other:
\$	Interior doors		
\$	Interior finish carpentry	\$	Other
\$	Built-in bookcases & furniture		
\$	Hardware		
\$	Insulation	\$	
			Total Cost of Repairs

Floodplain Damage / Improvement Cost Form Cont.

Costs That May Be Excluded From Floodplain SI/SD Determination

Items that should be excluded are those that are not directly associated with the building. The following list characterizes the types of costs that may be excluded:

- Clean-up and trash removal
- Costs to temporarily stabilize a building so that it is safe to enter to evaluate required repairs
- Costs to obtain or prepare plans and specifications
- Land survey costs
- Permit fees and inspection fees
- Carpeting and re-carpeting installed over finished flooring such as wood or tiling
- Outside improvements, including landscaping, irrigation, sidewalks, driveways, fences, yard lights, swimming pools, pool enclosures, and detached accessory structures (e.g., garages, sheds, and gazebos)
- Costs required for the minimum necessary work to correct existing violations of health, safety, and sanitary codes
- Plug-in appliances such as washing machines, dryers, and stoves

Substantial Damage / Substantial Improvement Calculation

\$ _____

Total Cost of Repairs See preceding page

\$ _____

Assessed or Appraised Value of the Structure*

* Attach to this form either a: _____ tax assessment, or an
_____ appraisal from a licensed appraiser

Submitted by _____

Date _____

Substantial Damage / Substantial Improvement Determination

To be completed by staff

The damage / improvement has been determined to be:

_____ **Substantial**

_____ **Not substantial**

Floodplain Administrator _____

Date _____

Building Compliance Requirements in Flood Zone A

Types of Work	Building is Pre-FIRM	Building is Post-FIRM
Rehabilitation (renovate or remodel), <i>not SI</i>	Compliance not required	Work shall comply and shall not be allowed to make the building non-compliant with any aspect of the building that was required for compliance
Rehabilitation (renovate or remodel), SI	Building required to comply	Work shall comply and shall not be allowed to make the building non-compliant with any aspect of the building that was required for compliance*
Lateral addition and Rehabilitation, SI	Addition required to comply; building required to comply	Addition required to comply; building required to comply*
Lateral addition, <i>not SI</i>	Addition not required to comply	Addition required to be elevated to at least the elevation of the existing lowest floor
Lateral addition, SI, <i>not structurally connected</i>	Addition required to comply; building not required to comply	Addition required to comply
Lateral addition, SI, structurally connected	Addition required to comply; building required to comply	Addition required to comply; building required to comply*
Vertical addition above building, <i>not SI</i>	Compliance not required	Work shall comply and shall not be allowed to make the building non-compliant with any aspect of the building that was required for compliance
Vertical addition above building, SI	Building required to comply	Work shall comply and shall not be allowed to make the building non-compliant with any aspect of the building that was required for compliance*
Repair foundation, <i>not SI</i>	Compliance not required	Repairs shall comply and shall not be allowed to make the building non-compliant with any aspect of the building that was required for compliance
Repair foundation, SI	Building required to comply	Building required to comply*
Replace/extend foundation, SI (including "elevate-in-place")	Building required to comply	Building required to comply*
Repair damage, SD	Building required to comply	Work shall comply and shall not be allowed to make the building non-compliant with any aspect of the building that was required for compliance*
Reconstruct new building on existing or new foundation, SI	Reconstructed building required to comply	Reconstructed building required to comply*

***If a map revision has resulted in a higher BFE, a post-FIRM building must comply based on the new BFE.**

This table is adapted from "Table 6-1a. Compliance Matrix (A Zones)" found in FEMA P-758, Substantial Improvement/ Substantial Damage Desk Reference.

NEBRASKA DEPARTMENT OF NATURAL RESOURCES

Floodplain Management Division

NON-STRUCTURAL FLOODPLAIN DEVELOPMENT PERMIT APPLICATION INSTRUCTIONS

As defined in Title 44 of the Code of Federal Regulations (CFR) Part 60, Subpart A, Section § 60.3, the minimum standard for a community in the National Flood Insurance Program (NFIP) is to require a floodplain development permit prior to commencement of construction or development within any Special Flood Hazard Area (SFHA) within the community.

Note: The Non-Structural Floodplain Development Permit Application is a separate process from other building or zoning permit application processes. The Floodplain Development Permit is a prerequisite for application to other departments or agencies for all development in a SFHA.

The Non-Structural Floodplain Development Permit Application must be completed by the property owner or the owner's authorized representative. The application shall be completed on the forms provided by the Floodplain Administrator (FPA) and provided to the FPA upon completion for review and approval. No deviation from the original application is permissible.

The property owner or the owner's authorized representative must complete Section A, B, and C.

The local FPA must complete Section D.

Section A: Applicant and General Property Information

Section A must identify the property owner and the location of the proposed development. Enter the name and address of the property owner and the name and address of the applicant, if different than the property owner. Under "Site Information" enter the street address, if applicable, or the tax parcel ID number or property location description.

If the address is a rural route or a Post Office box number, enter the lot number and subdivision block number, the tax parcel ID number, the legal description, or an abbreviated location description based on distance and direction from a fixed point of reference.

Section B must provide a project narrative with sufficient detail and clarity for the FPA to understand the proposed scope of work for any property located partially or entirely within a SFHA.

Section B: Description of Proposed Project

Under the "Included Development Activities" section, please check all applicable development types or describe the development by selecting "other" and provide a description of the type of development.

Under "Included Submittal Documents" section, please check and attach all submittal documents that are applicable to the project. If the applicant is unsure which documents apply, please work with the FPA to ensure a complete submittal.

Under "Included Submittal Documents" section, please check and attach all submittal documents that are applicable to the project. If the applicant is unsure which documents apply, please work with the FPA to ensure a complete submittal.

Section C: Applicant Certification

Section C is the formal certification and request by the property owner to initiate work within a SFHA. This statement, once signed, commits the applicant to complete the project without deviation from the approved application, ensuring the proposed project remains in strict compliance with the local floodplain ordinance and any applicable regulations.

Section D: To Be Completed by the Floodplain Administrator

Section D must be completed by the community FPA. In the "FEMA Flood Zone" section, reference the regulatory maps, which are available on FEMA's Map Service Center (msc.fema.gov), select the appropriate flood zone(s) where the development is located. All flood zones containing the letter "A" are considered the Special Flood Hazard Areas (SFHAs) and require a floodplain development permit. Each flood zone is defined in the legend of the Flood Insurance Rate Map (FIRM) panel on which it appears.

Using the appropriate Flood Insurance Study (FIS) profile, FIS floodway data table, or FIRM panel, locate the proposed development. Using the appropriate FIS profile enter the Base Flood Elevation (BFE) of the proposed development, rounded to the nearest tenth of a foot. If the proposed development is located in more than one flood zone, list all applicable BFEs.

In Zone A floodplains, where BFEs are not published, the BFE for the proposed development area may be determined from another source. The FPA may request a BFE determination from the Nebraska Department of Natural Resources and this can be selected as the "Source of BFE" section. If the Nebraska Department of Natural Resources did not produce a BFE determination for the proposed development location or if the proposed development is larger than five acres or 50 lots, indicate the source as "Other" and include the source of the BFE determination and the date the BFE determination was completed.

Upon receipt of a completed floodplain development permit application, the FPA shall review the application and approve or deny the requested development permit, in accordance with the provisions of the local floodplain ordinance, current NFIP regulations, and State minimum standards.

Upon approval, the FPA shall issue a placard to be posted in a conspicuous place on the affected property, and the placard shall remain posted until a Certificate of Compliance is issued, attesting to the fact that the use or alteration is in compliance with the provisions of the floodplain ordinance .

The development may not be used or occupied prior to the issuance of a Certificate of Compliance. By signing and submitting this application, the applicant consents to the FPA to make reasonable inspections prior to the issuance of the Certificate of Compliance.

In accordance with NFIP regulations, State minimum standards, and the local floodplain ordinance, documentation related to this application and permit must be retained. All records including, but not limited to, floodplain development permits, elevation certificates, Certificates of Compliance, and any attachments to these documents must be permanently retained by the community.

Place
Jurisdiction
Seal

FOR OFFICIAL USE ONLY

Floodplain Ordinance / Resolution #:

Date Filed:

Jurisdiction:

Date Decided:

Permit No.:

Approved? Y N

Fee:

Notes:

Non-structural Floodplain Development Permit Application

Insert Community Office Address and FPA Contact Information Here

Section A: Applicant and General Property Information

Owner Information

Property Owner Name: _____

Address: _____

City, State, Zip: _____

Phone: _____

Email: _____

Site Information

Address: _____

City, State, Zip: _____

Parcel #: _____

Lot & Block Subd. / PLSS (S-T-R): _____

Applicant Information *If different than owner.*

Applicant Name: _____

Address: _____

City, State, Zip: _____

Phone: _____

Email: _____

License No.: _____

Section B: Description of Proposed Project

Project Narrative:

Included Development Activities *Check all that apply*

Deck/Patio/Gazebo

Fence

Watercourse Alteration

Road or trail construction

Excavation or Removal of Fill

Other (describe):

Gas or liquid storage tank

Utilities, well, or other service facilities

Bridge or culvert construction or alteration

Subdivision

Recreational Vehicle Park

Flood Control (Berm, piling of fill, etc.)

Clearing

Fill

Mining

Drilling

Grading

Dredging

Included Submittal Documents *Check all that apply*

Completed application

Location map with floodplain shown

Site plan

Grading plan*

Construction specifications

Other (describe):

No-rise certificate (floodway)

Less than 1' rise determination (for SFHA w/o floodway)

Copies of required state and federal permits

Site specific BFEs**

CLOMR application***

** If grades are not changing as a result of site work, a current topographical map of the site will suffice in lieu of a grading plan. All site plans must detail the location, elevation, and design of mechanical equipment. Additional information and materials may be required*

*** For developments larger than 5 acres or 50 lots*

****For developments resulting in floodwater rise above permissible levels, changes to base flood elevations, or changes to floodplain boundaries*

Section C: Applicant Certification

I (APPLICANT) CERTIFY THE ABOVE INFORMATION IS CORRECT AND AGREE TO CONSTRUCT THE PROJECT IN ACCORDANCE WITH THE APPROVED PLAT, PLANS, AND SPECIFICATIONS NOTED HEREIN AND IN STRICT COMPLIANCE WITH ALL PROVISIONS OF APPLICABLE REGULATIONS INCLUDING THOSE OUTLINED IN SECTION D BELOW. I AGREE TO NOT BEGIN DEVELOPMENT ACTIVITIES UNTIL THIS APPLICATION IS APPROVED BY THE FLOODPLAIN ADMINISTRATOR.

I UNDERSTAND THAT AN APPROVED FLOODPLAIN DEVELOPMENT PERMIT MAY BE REVOKED AT ANY TIME UPON VIOLATION OF ANY PROVISIONS OF APPLICABLE REGULATIONS.

I HEREBY REQUEST A FLOODPLAIN DEVELOPMENT PERMIT ON THE ABOVE DESCRIBE REAL PROPERTY, LOCATED WITHIN THE (INSERT COMMUNITY NAME), NEBRASKA.

Applicant Signature

Print Name

Date

Section D: To Be Completed by the Floodplain Administrator**Floodplain Information**

FEMA Flood Zone: ___ A ___ AE ___ AH ___ AO ___ Floodway ___ X (shaded) ___ Other

Base Flood Elevation: _____ NGVD (29) / NAVD (88)

Source of BFE: ___ FIRM / FIS ___ Nebraska Floodplain Division ___ Other: _____

Required Flood Protection Elevation: _____ NGVD (29) / NAVD (88)

Is the proposed development within a designated Floodway? ___ Yes ___ No

If yes, does this application include a certificate of no-rise from a registered, professional engineer? ___ Yes ___ No **If no, the permit may not be approved until a no-rise is provided*

Is the proposed development in an A or AE zone without a designated floodway? ___ Yes ___ No

If yes, does this application include a determination that the development will result in less than 1 foot of cumulative flood-water rise? ___ Yes ___ No **If no, the permit may not be approved until a determination of rise is provided*

For Developments in all Flood Zones

___ Yes ___ No ___ N/A	Anchored?
___ Yes ___ No ___ N/A	Materials and equipment are resistant to flooding?
___ Yes ___ No ___ N/A	Minimizes flood damage and is reasonably safe from flooding?
___ Yes ___ No ___ N/A	Provides adequate drainage to reduce exposure to flood hazards?
___ Yes ___ No ___ N/A	All electrical, heating, ventilation, air conditioning, plumbing, and any other service facilities have been designed and located to prevent entry of floodwaters?
___ Yes ___ No ___ N/A	Materials that are buoyant, flammable, explosive, or could be injurious to human, animal, or plant life? <i>*If yes, the permit cannot be approved</i>

Application Determination: For Official Use Only

___ Permit Approved ___ Additional Information Required **See attached* ___ Permit Denied

If Approved:

Floodplain Administrator Signature

Permit Approval Date

Permit Expiration Date

NEBRASKA DEPARTMENT OF NATURAL RESOURCES

Floodplain Management Division

STRUCTURAL FLOODPLAIN DEVELOPMENT PERMIT APPLICATION INSTRUCTIONS

As defined in Title 44 of the Code of Federal Regulations (CFR) Part 60, Subpart A, Section § 60.3, the minimum standard for a community in the National Flood Insurance Program (NFIP) is to require a floodplain development permit prior to commencement of construction or development within any Special Flood Hazard Area (SFHA) within the community.

Note: The Non-Structural Floodplain Development Permit Application is a separate process from other building or zoning permit application processes. The Floodplain Development Permit is a prerequisite for application to other departments or agencies for all development in a SFHA.

The Non-Structural Floodplain Development Permit Application must be completed by the property owner or the owner's authorized representative. The application shall be completed on the forms provided by the Floodplain Administrator (FPA) and provided to the FPA upon completion for review and approval. No deviation from the original application is permissible.

The property owner or the owner's authorized representative must complete Section A, B, and C.

The local FPA must complete Section D.

Section A: Applicant and General Property Information

Section A must identify the property owner and the location of the proposed development. Enter the name and address of the property owner and the name and address of the applicant, if different than the property owner. Under "Site Information" enter the street address, if applicable, or the tax parcel ID number or property location description.

If the address is a rural route or a Post Office box number, enter the lot number and subdivision block number, the tax parcel ID number, the legal description, or an abbreviated location description based on distance and direction from a fixed point of reference.

Section B: Description of Proposed Project

Section B must provide a project narrative with sufficient detail and clarity for the FPA to understand the proposed scope of work for any property located partially or entirely within a SFHA.

Under the "For Structural Development Activities" section, please check all applicable activities, building type(s), foundation type(s), included development activities, or describe the development by selecting "other" and providing a description of the type of development.

For structural development activities, note that there is a difference between the foundation type defined as a basement or an enclosure.

A basement is any area of the building having its floor subgrade (below ground level) on all sides.

An enclosure is a foundation below the base flood elevation but is above grade and requires openings. An enclosure can be a crawlspace or garage. The bottom of each opening cannot be higher than 1 foot above the higher of the finished interior grade or the finished exterior grade immediately under the opening. Therefore, the expected finished exterior grade and the final interior grade (or floor) of a crawlspace must be known before the location of the openings in a perimeter foundation wall can be determined.

Under "Included Submittal Documents" section, please check and attach all submittal documents that are applicable to the project. If the applicant is unsure which documents apply, please work with the FPA to ensure a complete submittal.

Section C: Applicant Certification

Section C is the formal certification and request by the property owner to initiate work within a SFHA. This statement, once signed, commits the applicant to complete the project without deviation from the approved application, ensuring the proposed project remains in strict compliance with the local floodplain ordinance and any applicable regulations.

Section D: To Be Completed by the Floodplain Administrator

Section D must be completed by the community FPA. In the "FEMA Flood Zone" section, reference the regulatory maps, which are available on FEMA's Map Service Center (msc.fema.gov), select the appropriate flood zone(s) where the development is located. All flood zones containing the letter "A" are considered the Special Flood Hazard Areas (SFHAs) and require a floodplain development permit. Each flood zone is defined in the legend of the Flood Insurance Rate Map (FIRM) panel on which it appears.

Using the appropriate Flood Insurance Study (FIS) profile, FIS floodway data table, or FIRM panel, locate the proposed development. Using the appropriate FIS profile enter the Base Flood Elevation (BFE) of the proposed development, rounded to the nearest tenth of a foot. If the proposed development is located in more than one flood zone, list all applicable BFEs.

In Zone A floodplains, where BFEs are not published, the BFE for the proposed development area may be determined from another source. The FPA may request a BFE determination from the Nebraska Department of Natural Resources and this can be selected as the "Source of BFE" section. If the Nebraska Department of Natural Resources did not produce a BFE determination for the proposed development location or if the proposed development is larger than five acres or 50 lots, indicate the source as "Other" and include the source of the BFE determination and the date the BFE determination was completed.

The substantial improvement section helps determine if the project qualifies as a substantial improvement, triggering compliance with flood regulations. This section must also be used when permitting repairs to damaged structures.

Provide the following:

- (a) Cost of Improvements: Attach supporting documentation (estimates, contracts, etc.).
- (b) Value of Structure: Attach assessment documents or appraisal.
- Calculation:
$$(a) \div (b)(a) \div (b)(a) \div (b) \times 100 = (c)$$
 - If $(c) \geq 50\%$, the project is a substantial improvement and must comply with full flood protection requirements.

Please ensure all elevation values are based on the applicable datum (e.g., NAVD88 or NGVD29) and that supporting documentation is submitted where required.

Upon receipt of a completed floodplain development permit application, the FPA shall review the application and approve or deny the requested development permit, in accordance with the provisions of the local floodplain ordinance, current NFIP regulations, and State minimum standards.

Upon approval, the FPA shall issue a placard to be posted in a conspicuous place on the affected property, and the placard shall remain posted until a Certificate of Compliance is issued, attesting to the fact that the use or alteration is in compliance with the provisions of the Floodplain Ordinance.

The development may not be used or occupied prior to the issuance of a Certificate of Compliance. By signing and submitting this application, the applicant consents to the FPA to make reasonable inspections prior to the issuance of the Certificate of Compliance.

In accordance with NFIP regulations, State minimum standards, and the local floodplain ordinance, documentation related to this application and permit must be retained. All records including, but not limited to, floodplain development permits, elevation certificates, Certificates of Compliance, and any attachments to these documents must be permanently retained by the community.

Place
Jurisdiction
Seal

FOR OFFICIAL USE ONLY

Floodplain Ordinance / Resolution #:

Date Filed:

Jurisdiction:

Date Decided:

Permit No.:

Approved? Y N

Fee:

Notes:

Structural Floodplain Development Permit Application

Insert Community Office Address and FPA Contact Information Here

Section A: Applicant and General Property Information

Owner Information

Property Owner Name: _____

Address: _____

City, State, Zip: _____

Phone: _____

Email: _____

Site Information

Address: _____

City, State, Zip: _____

Parcel #: _____

Lot & Block Subd. / PLSS (S-T-R): _____

Applicant Information *If different than owner.*

Applicant Name: _____

Address: _____

City, State, Zip: _____

Phone: _____

Email: _____

License No.: _____

Section B: Project Proposal

Project Narrative:

For Structural Development Activities *Check all applicable activities*

Activity:

New Structure

Existing Structure:

Demolition and Replacement

Demolition

Relocation/Elevation

Alteration/Addition/Improvement

Repair after Damage

Building Type:

Residential

Non-residential

Multi-use Development

Manufactured Home

Accessory Building (sq. footage)

Other *(describe)*:

Foundation Type *Check all that apply*

Slab

Basement

Elevated on posts, piles, or piers

Elevated on posts, piles, or piers with enclosure

Above-ground crawlspace

Elevated above an enclosure (garage, stairway access)

Will the structure have an enclosed space below the lowest floor and below the Base Flood Elevation? ____ Y ____ N

Total square footage of enclosed area below BFE: _____

Included Development Activities *Check all other activities related to this project*

Deck/Patio/Gazebo	Gas or liquid storage tank	Clearing
Fence	Utilities, well, or other service facilities	Fill
Watercourse Alteration	Bridge or culvert construction or alteration	Mining
Road or trail construction	Subdivision	Drilling
Excavation or Removal of Fill	Recreational Vehicle Park	Grading
Dredging	Flood Control (berms, piling of fill, etc.)	
Other <i>(describe)</i> :		

Included Submittal Documents *Check all that apply*

Completed application	No-rise certificate (floodway)
Location map with floodplain shown	Less than 1' rise determination (for SFHA w/o floodway)
Site plan	Copies of required state and federal permits
Grading plan	Site specific BFEs
Construction specifications	CLOMR application
Cost estimate for improvements/repairs	
Other <i>(describe)</i> :	

Section C: Applicant Certification

I (APPLICANT) CERTIFY THE ABOVE INFORMATION IS CORRECT AND AGREE TO CONSTRUCT THE PROJECT IN ACCORDANCE WITH THE APPROVED PLAT, PLANS, AND SPECIFICATIONS NOTED HEREIN AND IN STRICT COMPLIANCE WITH ALL PROVISIONS OF APPLICABLE REGULATIONS INCLUDING THOSE OUTLINED IN SECTION D BELOW. I AGREE TO NOT BEGIN DEVELOPMENT ACTIVITIES UNTIL THIS APPLICATION IS APPROVED BY THE FLOODPLAIN ADMINISTRATOR.

I UNDERSTAND THAT UPON APPROVAL BY THE FLOODPLAIN ADMINISTRATOR, THE PERMIT IS ISSUED WITH THE CONDITION THAT THE LOWEST FLOOR (INCLUDING BASEMENT) OF ANY NEW OR SUBSTANTIALLY IMPROVED RESIDENTIAL BUILDING WILL BE ELEVATED AT LEAST ONE FOOT ABOVE THE BASE FLOOD ELEVATION. IF THE PROPOSED DEVELOPMENT IS A NON-RESIDENTIAL BUILDING, THAT UPON APPROVAL BY THE FLOODPLAIN ADMINISTRATOR, THE PERMIT IS ISSUED WITH THE CONDITION THAT THE LOWEST FLOOR (INCLUDING BASEMENT) OF A NEW OR SUBSTANTIALLY IMPROVED NON-RESIDENTIAL BUILDING WILL BE ELEVATED AT LEAST ONE FOOT ABOVE THE BASE FLOOD ELEVATION, OR, TOGETHER WITH ATTENDANT UTILITY AND SANITARY FACILITIES, FLOODPROOFED BELOW ONE FOOT ABOVE THE BASE FLOOD ELEVATION.

I AGREE TO PROVIDE CERTIFICATION BY A REGISTERED, PROFESSIONAL ENGINEER, ARCHITECT, OR LAND SURVEYOR OF THE "AS-BUILT" LOWEST FLOOR ELEVATION (INCLUDING BASEMENT) OR FLOODPROOFED ELEVATION OF ANY NEW OR SUBSTANTIALLY IMPROVED BUILDING COVERED BY THIS PERMIT.

I UNDERSTAND THAT AN APPROVED FLOODPLAIN DEVELOPMENT PERMIT MAY BE REVOKED AT ANY TIME UPON VIOLATION OF ANY PROVISIONS OF APPLICABLE REGULATIONS.

I HEREBY REQUEST A FLOODPLAIN DEVELOPMENT PERMIT ON THE ABOVE DESCRIBED REAL PROPERTY, LOCATED WITHIN THE (INSERT COMMUNITY NAME), NEBRASKA.

Applicant Signature

Print Name

Date

Section D: Project Requirements (To Be Completed by Floodplain Administrator)

Floodplain Information

FEMA Flood Zone: ☐ A ☐ AE ☐ AH ☐ AO ☐ Floodway ☐ X (shaded) ☐ Other

Base Flood Elevation: _____ ☐ NGVD (29) ☐ NAVD (88)

Source of BFE: ☐ FIRM / FIS ☐ Nebraska Floodplain Division ☐ Other: _____

Required Flood Protection Elevation (FPE): _____ ☐ NGVD (29) ☐ NAVD (88)

Regulatory Requirements

Residential:

Minimum required elevation of top of lowest floor: _____ ft. (Required Flood Protection Elevation)

Enclosed area below lowest floor and below BFE? ☐ Yes ☐ No

Requirements for enclosed area below BFE:

Required Net Area of Openings: _____ Square Inches

Minimum required elevation for utilities/equipment: _____ ft. (Required Flood Protection Elevation)

Nonresidential:

Permitted Mitigation Method(s): ☐ Elevation of the Lowest Floor to or above required FPE

☐ Dry-floodproofing to or above required FPE

☐ Wet-floodproofing (only for pre-approved structures)

Required Net Area of Openings: _____ Square Inches

Enclosed area below lowest floor and below BFE? ☐ Yes ☐ No

Requirements for enclosed area below BFE:

Required Net Area of Openings: _____ Square Inches

Permitted Mitigation Method for Utilities/Equipment: ☐ Elevation to or above required FPE

☐ Dry-floodproofing to or above required FPE

Substantial Improvement Determination *For improvements/additions of an existing structure*

Cost of Improvements:

Attach an itemized cost estimate; See FEMA's *Included and Excluded Costs for Damage Repair Estimates*

(a) _____

Value of Structure:

Attach assessment documents

(b) _____

Calculate the following: (a) ÷ (b) x 100 = (c)

(c) _____

Is the project a substantial improvement?

If (c) is greater than or equal to 50%, the project is a substantial improvement.

☐ Y ☐ N

If yes, project must meet applicable regulatory requirements listed above.

Post-Construction RequirementsElevation Certificate required post-construction? ☐ Y ☐ N*Certificate must be completed by a Nebraska registered, professional surveyor*Floodproofing Certificate required post-construction? ☐ Y ☐ N*Certificate must be completed by a Nebraska registered, professional engineer***Is the proposed development within a designated Floodway?** ☐ Yes ☐ NoIf yes, does this application include a certificate of no-rise from a registered, professional engineer? ☐ Yes ☐ No **If no, the permit may not be approved until a no-rise is provided***Is the proposed development in an A or AE zone without a designated floodway?** ☐ Yes ☐ NoIf yes, does this application include a determination that the development will result in less than 1 foot of cumulative floodwater rise? ☐ Yes ☐ No **If no, the permit may not be approved until a determination rise is provided***For Developments in all Flood Zones**

<input type="checkbox"/> Yes	<input type="checkbox"/> No	<input type="checkbox"/> N/A	Anchored?
<input type="checkbox"/> Yes	<input type="checkbox"/> No	<input type="checkbox"/> N/A	Materials and equipment are resistant to flooding?
<input type="checkbox"/> Yes	<input type="checkbox"/> No	<input type="checkbox"/> N/A	Minimizes flood damage and is reasonably safe from flooding?
<input type="checkbox"/> Yes	<input type="checkbox"/> No	<input type="checkbox"/> N/A	Provides adequate drainage to reduce exposure to flood hazards?
<input type="checkbox"/> Yes	<input type="checkbox"/> No	<input type="checkbox"/> N/A	All electrical, heating, ventilation, air conditioning, plumbing, and any other service facilities have been designed and located to prevent entry of floodwaters?
<input type="checkbox"/> Yes	<input type="checkbox"/> No	<input type="checkbox"/> N/A	Materials that are buoyant, flammable, explosive, or could be injurious to human, animal, or plant life?

Required Submittal Documents *Check all that apply*

Completed application	No-rise certificate (floodway)
Location map with floodplain shown	Less than 1' rise determination (for SFHA w/o floodway)
Site plan	Copies of required state and federal permits
Grading plan*	Site specific BFEs**
Construction specifications	CLOMR application***
Cost estimate for improvements/repairs	
Other (describe):	

** If grades are not changing as a result of site work, a current topographical map of the site will suffice in lieu of a grading plan. All site plans must detail the location, elevation, and design of mechanical equipment. Additional information and materials may be required**** For developments larger than 5 acres or 50 lots*****For developments resulting in floodwater rise above permissible levels, changes to base flood elevations, or changes to floodplain boundaries***Application Determination: For Official Use Only**☐ Permit Approved ☐ Additional Information Required **See attached* ☐ Permit Denied**If Approved:**_____
Floodplain Administrator Signature_____
Permit Approval Date_____
Permit Expiration Date

REQUEST FOR INFORMATION (RFI)

The FPA may request additional information regarding the proposed development prior to approval of this application. If the applicant receives a returned permit application with the request for additional information document attached, the applicant must submit the items identified or reach out to the FPA to get clarification. Upon receipt of the request for additional information, the applicant must not begin development activities until a revised floodplain development permit is submitted, approved, and issued by the FPA. Pay close attention to the “date info needed by” under the “General Information” section. If additional information is not submitted prior to this date, the applicant must complete a new floodplain development permit application.

Place
Jurisdiction
Seal

General Information

For Permit No.:

Requested by:

Date Requested:

Floodplain Administrator Phone #:

Date info needed by:

Floodplain Administrator Email:

After this date, a new permit application must be submitted.

Additional Documentation Requested

The following information was not included in your initial floodplain development permit application. To process your request, please provide the following information to the floodplain administrator by the date indicated in the General Information section above. If the information requested is not provided to the floodplain administrator by the required date, a new floodplain development permit application must be submitted. DO NOT begin any development activity until an approved floodplain development permit is granted by the floodplain administrator.

___ Applicant contact information

___ No-rise certificate

___ Applicant license number

___ Less than 1' rise determination

___ Site Address, Parcel No., or Legal Desc.

___ Required state or federal permits (*see comments*)

___ Better description of project

___ Site specific BFE

___ Location map

___ CLOMR application

___ Site plan (including floodplain/floodway)

___ Pre-construction Elevation Certificate*

___ Grading plan

___ Elevation Certificate for existing structure

___ Construction specifications

___ Floodproofing Certificate

___ Floor plans

___ Flood opening / vent specifications

___ Project cost estimate

**post-construction Elevation Certificate still required*

Additional Comments of Other Documentation Requested (Describe):

Floodplain Administrator Certification

Floodplain Administrator Signature:

Date:

The above signature does not grant permission to begin development.

Building Compliance Requirements in Flood Zone A

Types of Work	Building is Pre-FIRM	Building is Post-FIRM
Rehabilitation (renovate or remodel), <i>not SI</i>	Compliance not required	Work shall comply and shall not be allowed to make the building non-compliant with any aspect of the building that was required for compliance
Rehabilitation (renovate or remodel), SI	Building required to comply	Work shall comply and shall not be allowed to make the building non-compliant with any aspect of the building that was required for compliance*
Lateral addition and Rehabilitation, SI	Addition required to comply; building required to comply	Addition required to comply; building required to comply*
Lateral addition, <i>not SI</i>	Addition not required to comply	Addition required to be elevated to at least the elevation of the existing lowest floor
Lateral addition, SI, <i>not structurally connected</i>	Addition required to comply; building not required to comply	Addition required to comply
Lateral addition, SI, structurally connected	Addition required to comply; building required to comply	Addition required to comply; building required to comply*
Vertical addition above building, <i>not SI</i>	Compliance not required	Work shall comply and shall not be allowed to make the building non-compliant with any aspect of the building that was required for compliance
Vertical addition above building, SI	Building required to comply	Work shall comply and shall not be allowed to make the building non-compliant with any aspect of the building that was required for compliance*
Repair foundation, <i>not SI</i>	Compliance not required	Repairs shall comply and shall not be allowed to make the building non-compliant with any aspect of the building that was required for compliance
Repair foundation, SI	Building required to comply	Building required to comply*
Replace/extend foundation, SI (including "elevate-in-place")	Building required to comply	Building required to comply*
Repair damage, SD	Building required to comply	Work shall comply and shall not be allowed to make the building non-compliant with any aspect of the building that was required for compliance*
Reconstruct new building on existing or new foundation, SI	Reconstructed building required to comply	Reconstructed building required to comply*

***If a map revision has resulted in a higher BFE, a post-FIRM building must comply based on the new BFE.**

This table is adapted from "Table 6-1a. Compliance Matrix (A Zones)" found in FEMA P-758, Substantial Improvement/Substantial Damage Desk Reference.

Appendix B: Contact Information

Department of Natural Resources Floodplain Management Division:

Jamie Reinke, PE, CFM	Division Head	(402) 471-3957
Elijah Kaufman, CFM	State NFIP Coordinator	(402) 471-0640
Adele Philips, CFM	Flood Mitigation Planner	(402) 471-9252
Isabella Bialas, CFM	NFIP Specialist	(402) 471-3929
Anna Crist, CFM	Outreach and NFIP Specialist	(402) 471-0585
Mercy Kipenda, CFM	NFIP Specialist	(402) 471-3947
Erin Wendt, CFM	Outreach and NFIP Specialist	(402) 471-0572
Jared Ashton, PE, CFM	Project Engineer	(402) 471-0500
Stefan Schaepe, PE, CFM	Project Engineer	(402) 471-0644
Deanna Ringenberg, PE, CFM	Project Engineer	(402) 471-1221
Jecheon Kim, CFM	Floodplain Mapping Specialist	(402) 471-1223
Ryan Stastny, CFM	Floodplain Mapping Specialist	(402) 471-2243
Karl Merchant	Floodplain Mapping Specialist	(402) 471-2240
Harrison Jones	Floodplain Mapping Specialist	(402) 471-2242
Rebecca Podariu, EI, CFM	Engineer	(402) 471-0307
Michele York	Administrative Assistant	(402) 471-1214

Visit the NeDNR Floodplain Management website at:

<https://dnr.nebraska.gov/floodplain>

Tour the NeDNR Interactive Floodplain Map at:

<http://ne.gov/go/floodriskmap>

Nebraska Emergency Management Agency:

Main Office	(402) 471-7421
NEMA Hotline	(855) 211-2453

Visit the NEMA website at: <https://nema.nebraska.gov>

This page intentionally left blank.

NEBRASKA



DEPT. OF NATURAL RESOURCES

245 Fallbrook Blvd., Suite 201
Lincoln, Nebraska 68521-6729
(402) 471-2363