

NEBRASKA ADMINISTRATIVE CODE

TITLE 459, NEBRASKA ADMINISTRATIVE CODE

NEBRASKA DEPARTMENT OF NATURAL RESOURCES

Rules Relating to Boundaries of State Game Refuges

CHAPTER 1

Rules Related to Boundary of State Game Refuges
-- Various Counties, Nebraska

NEBRASKA ADMINISTRATIVE CODE

TITLE 459 --- RULES RELATING TO BOUNDARIES OF STATE GAME REFUGES

CHAPTER 1 --- RULES RELATING TO BOUNDARY OF STATE GAME REFUGES
- - VARIOUS COUNTIES, NEBRASKA

NUMERICAL TABLE OF CONTENTS

<u>SUBJECT OF TITLE</u>	<u>STATUTORY AUTHORITY</u>	<u>SUBSECTION</u>
Banks of the Stream	§ 37-707	001
Update of Boundary	§ 37-707	002
Boundary - Garden County	§ 37-707	003
Boundary - Douglas-Saunders County	§ 37-707	004
Boundary - Niobrara River	§ 37-707	005
Boundary - North Platte River	§ 37-707	006
Maps	§ 37-707	007

NEBRASKA ADMINISTRATIVE CODE

TITLE 459, NEBRASKA ADMINISTRATIVE CODE

NEBRASKA DEPARTMENT OF NATURAL RESOURCES

Rules Relating to Boundaries of State Game Refuges

CHAPTER 1

Rules Related to Boundary of State Game Refuges
-- various counties, Nebraska

001. Banks of the River. For purposes of this Chapter, the banks of the river means the words used in *Neb. Rev. Stat. §§ 37-706(3)*, and is depicted by a line on maps produced by the Department of Natural Resources ("Department") using best available technical information, best available elevation information, and past and present observations of the river and adjacent lands.

002. Update of Boundary. The Department may update the boundary determination whenever it determines that there has been a substantial change in the location of the banks of the river used for locating such boundary. For purposes of this chapter, a substantial change in the location of the banks of the river will be deemed to have occurred if a horizontal movement of greater than fifteen (15) yards has occurred from the current river bank line, and such change in the river bank line has been maintained for a period of at least two (2) years. Any member of the public may request the Department to review its boundary determination by submitting a petition requesting such review. Every petition must be accompanied by a representation made by the applicant that the boundary has undergone a substantial change as defined by this section. The Department shall not be required to update the boundary determination more often than once every five (5) years.

003. Boundary - Garden County, Nebraska. See *Neb. Rev. Stat. § 37-706(1)*

004. Boundary - Douglas-Saunders County Game Refuge. See *Neb. Rev. Stat. § 37-706(2)(a)*.

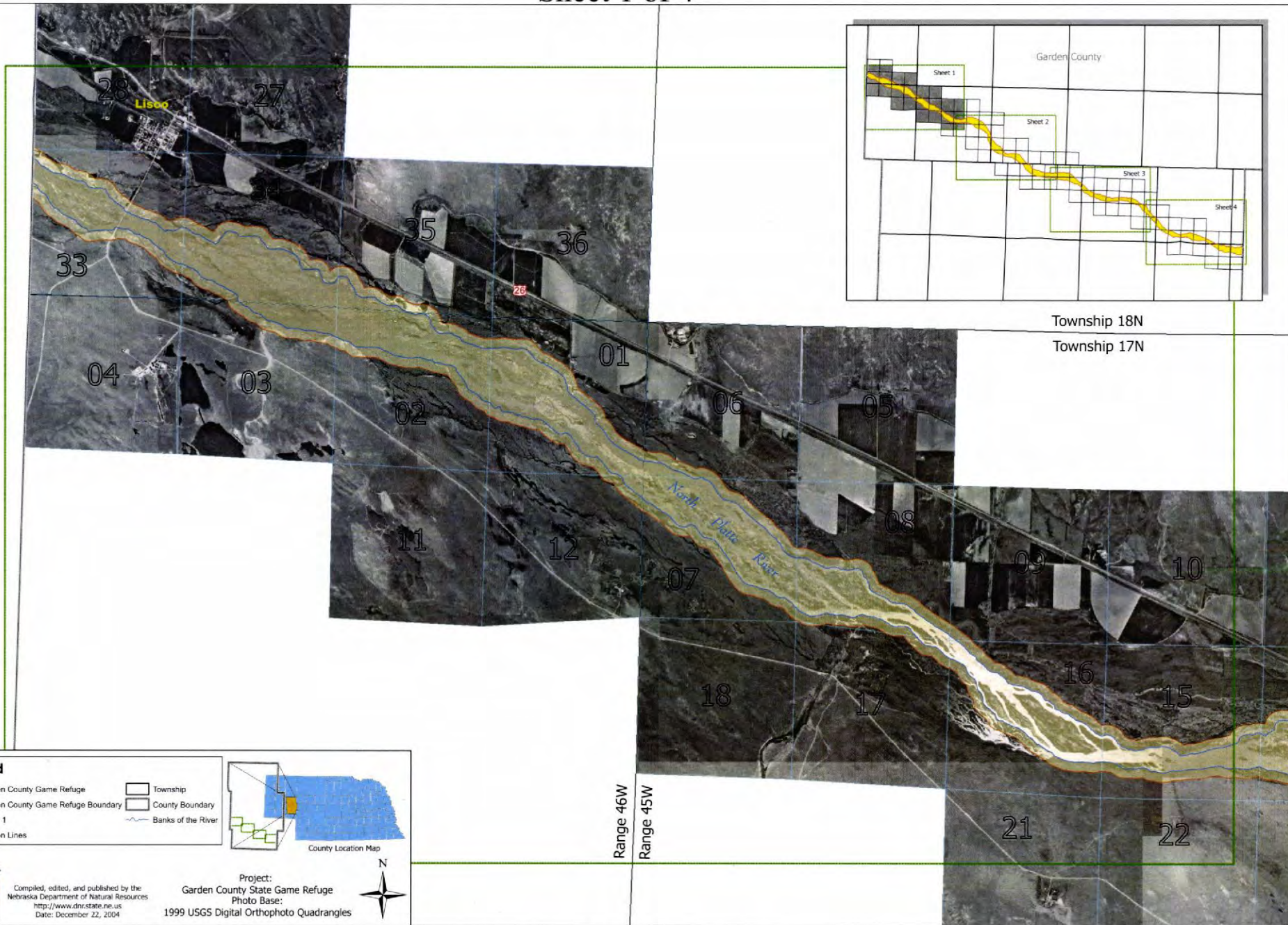
005. Boundary - Niobrara River Game Refuge. See *Neb. Rev. Stat. § 37-706(2)(b)*.

006. Boundary - North Platte River Game Refuge. See *Neb. Rev. Stat. § 37-706(2)(c)*.

007. State Game Refuge Maps. The attached maps depict the boundaries of the State Game Refuges.

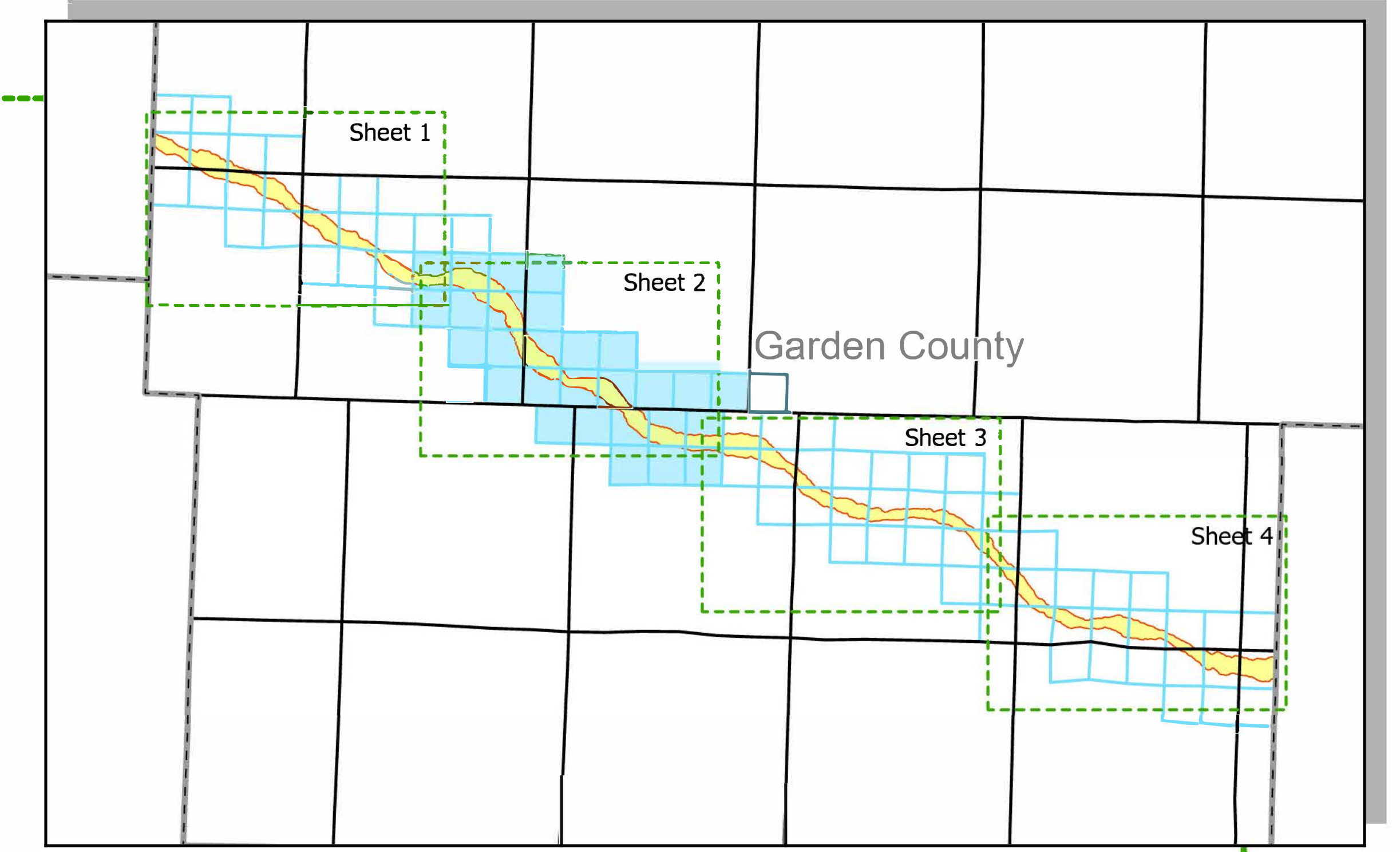
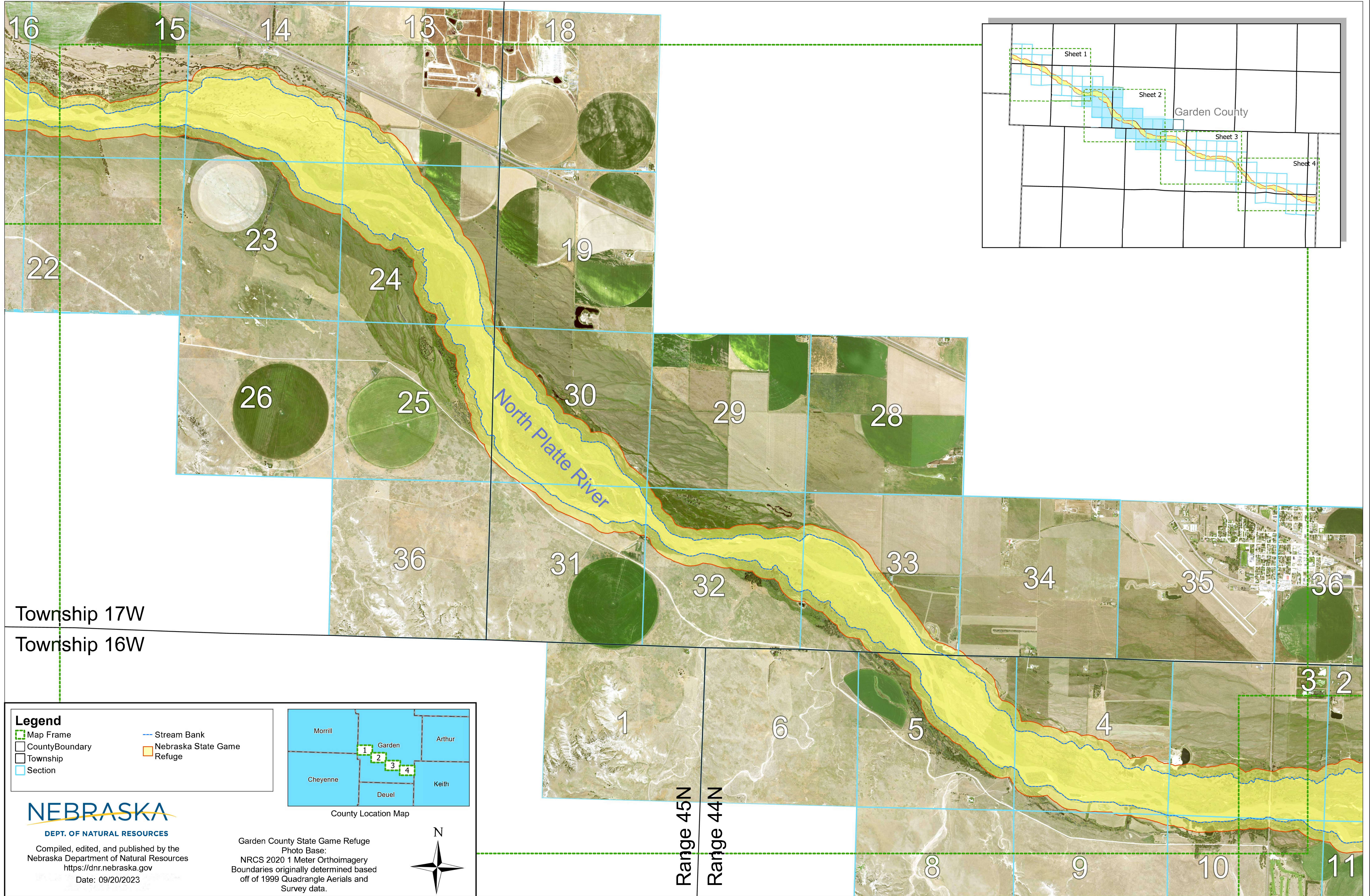
GARDEN COUNTY STATE GAME REFUGE

Sheet 1 of 4



Garden County State Game Refuge

Sheet 2 of 4

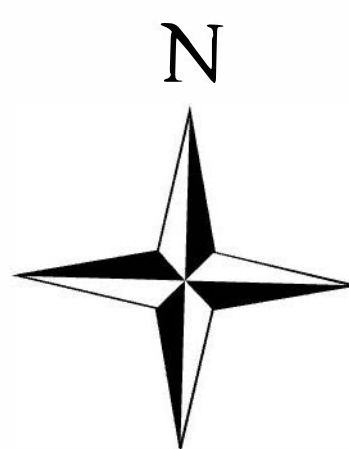
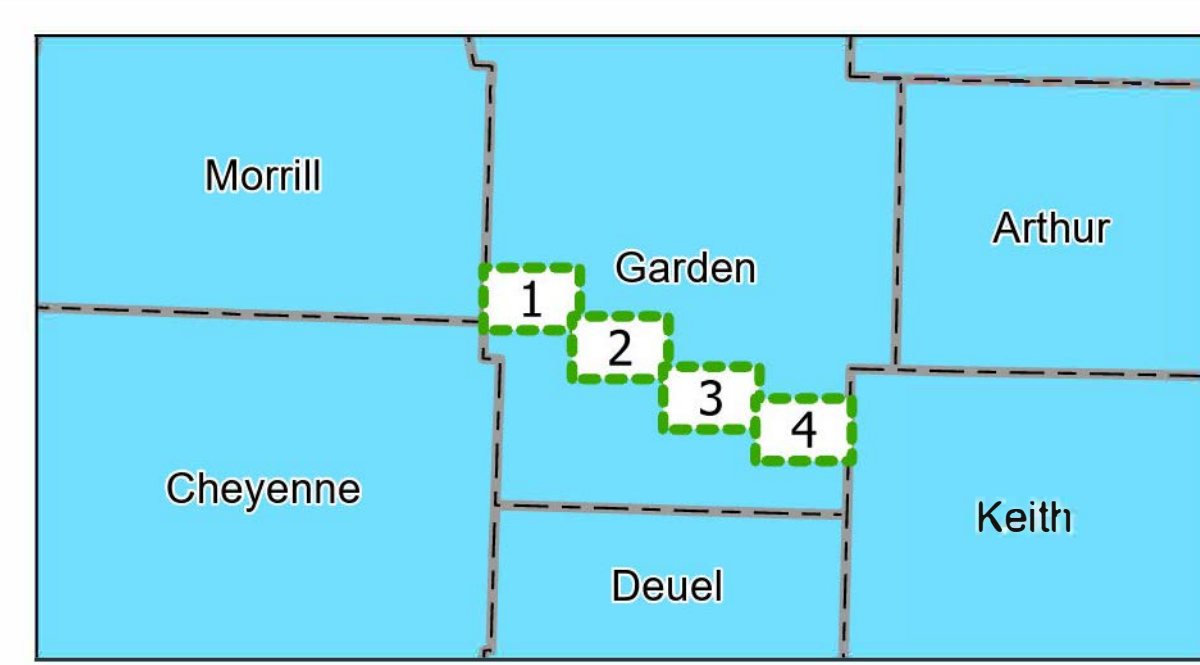


Township 17W

Township 16W

Legend

- Map Frame
- County Boundary
- Township
- Section
- Stream Bank
- Nebraska State Game Refuge



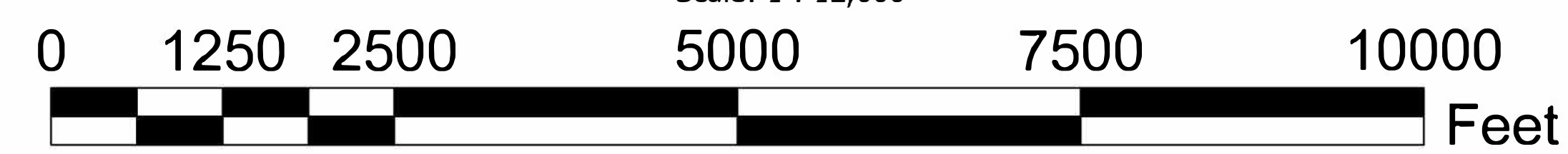
NEBRASKA

DEPT. OF NATURAL RESOURCES

Compiled, edited, and published by the
Nebraska Department of Natural Resources
<https://dnr.nebraska.gov>
Date: 09/20/2023

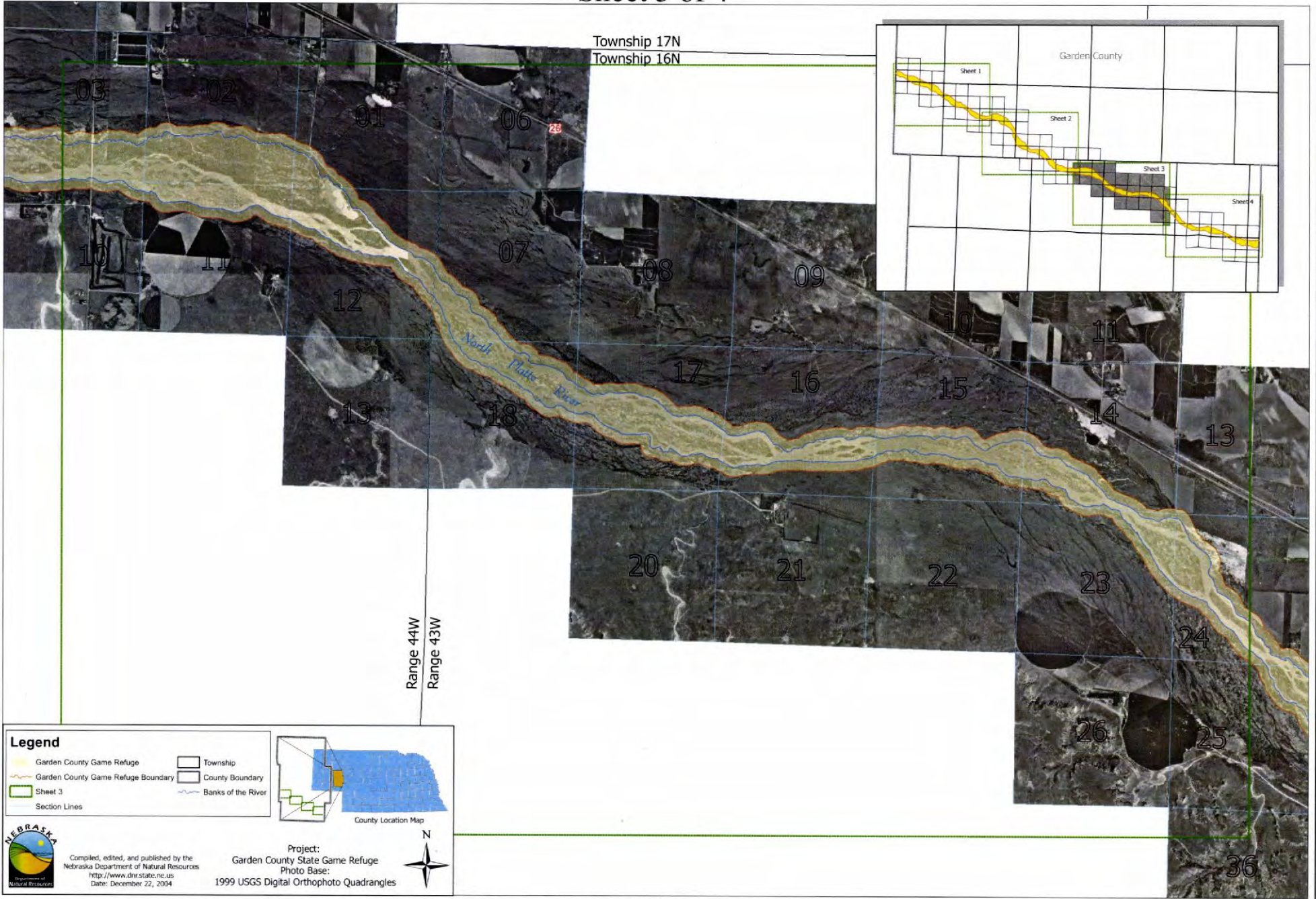
Garden County State Game Refuge
Photo Base:
NRCS 2020 1 Meter Orthoimagery
Boundaries originally determined based
off of 1999 Quadrangle Aerials and
Survey data.

Scale: 1 : 12,000



GARDEN COUNTY STATE GAME REFUGE

Sheet 3 of 4



Legend

- Garden County Game Refuge
- Garden County Game Refuge Boundary
- Sheet 3
- Section Lines
- Township
- County Boundary
- Banks of the River

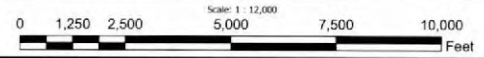
Project:
Garden County State Game Refuge
Photo Base:
1999 USGS Digital Orthophoto Quadrangles

NEBRASKA
Department of Natural Resources

Compiled, edited, and published by the
Nebraska Department of Natural Resources
<http://www.dnr.state.ne.us>
Date: December 22, 2004

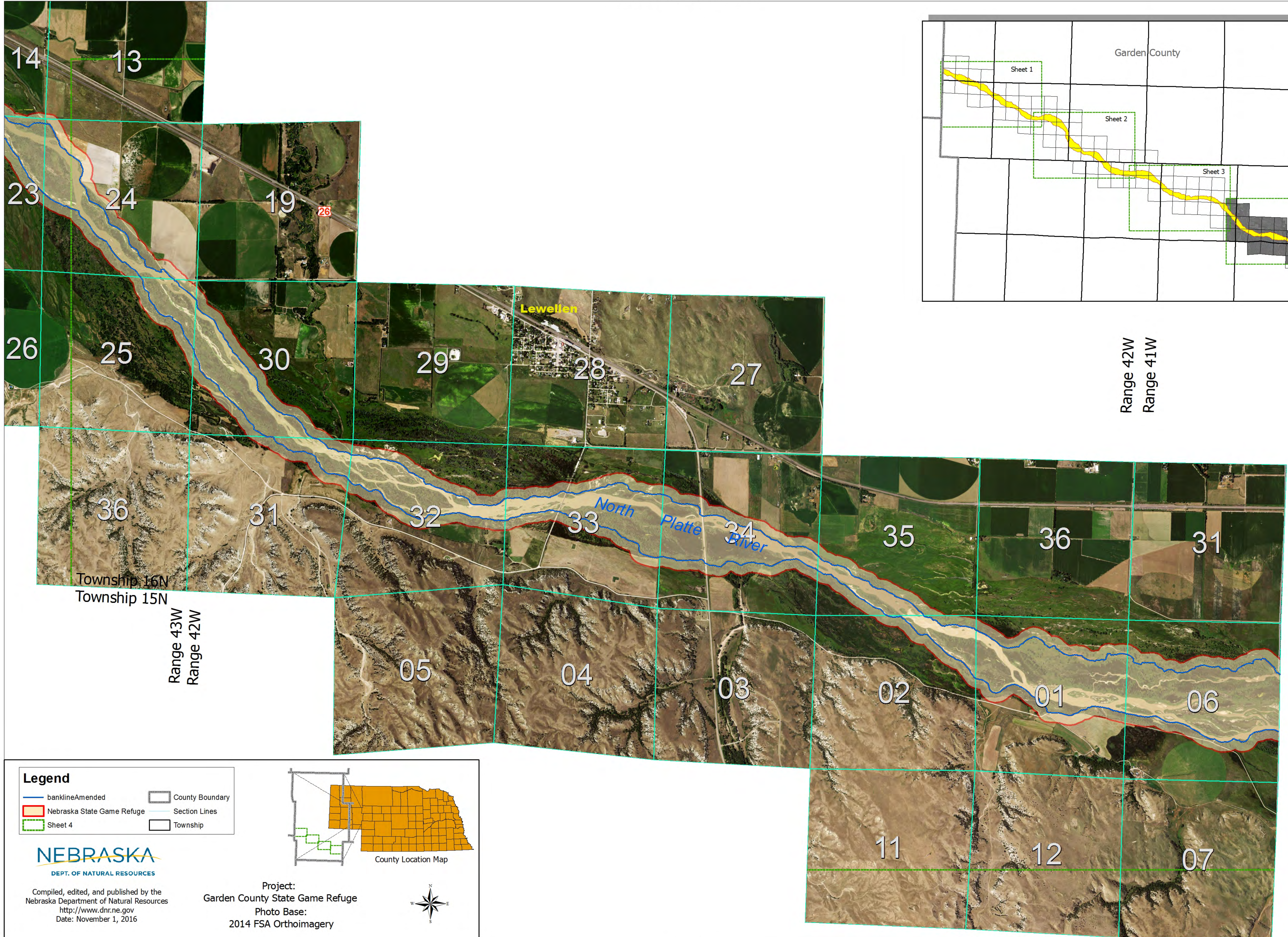
County Location Map

N



GARDEN COUNTY STATE GAME REFUGE

Sheet 4 of 4



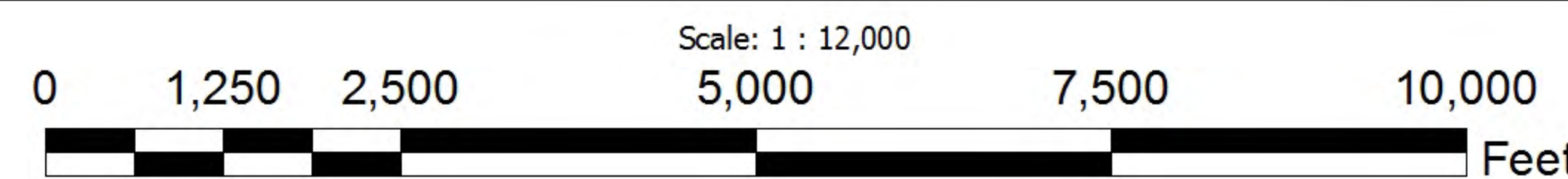
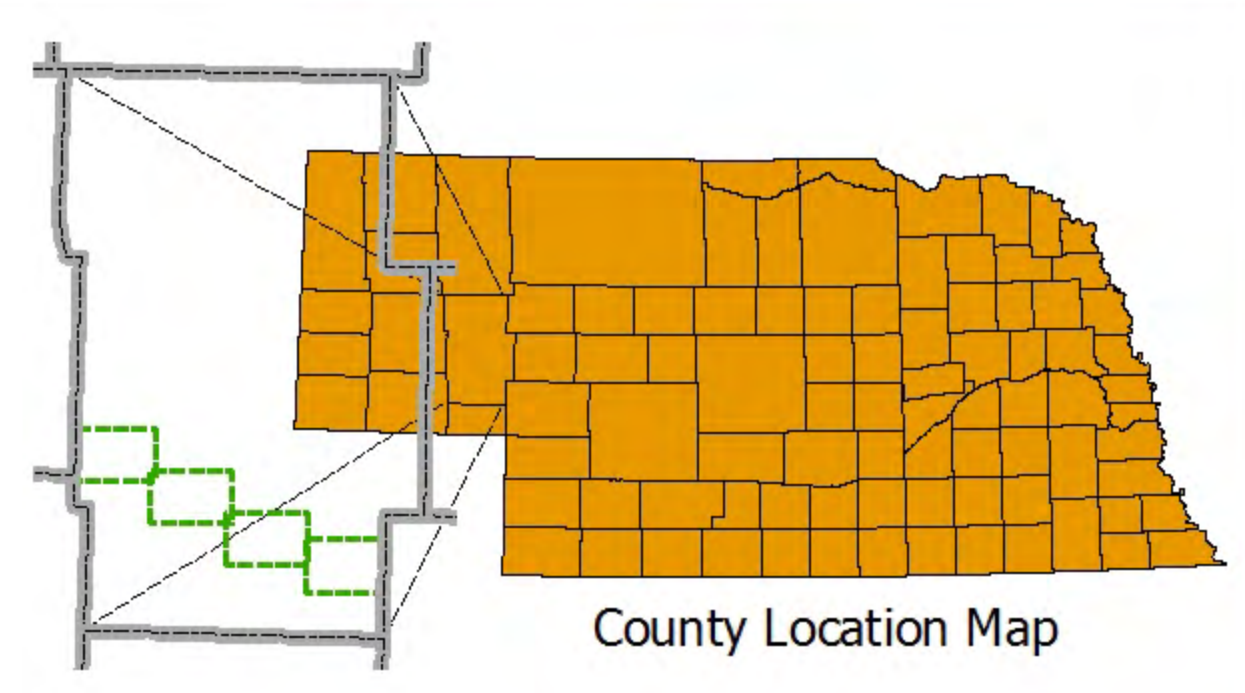
Range 42W
Range 41W

- Legend**
- banklineAmended
 - Nebraska State Game Refuge
 - Sheet 4
 - County Boundary
 - Section Lines
 - Township



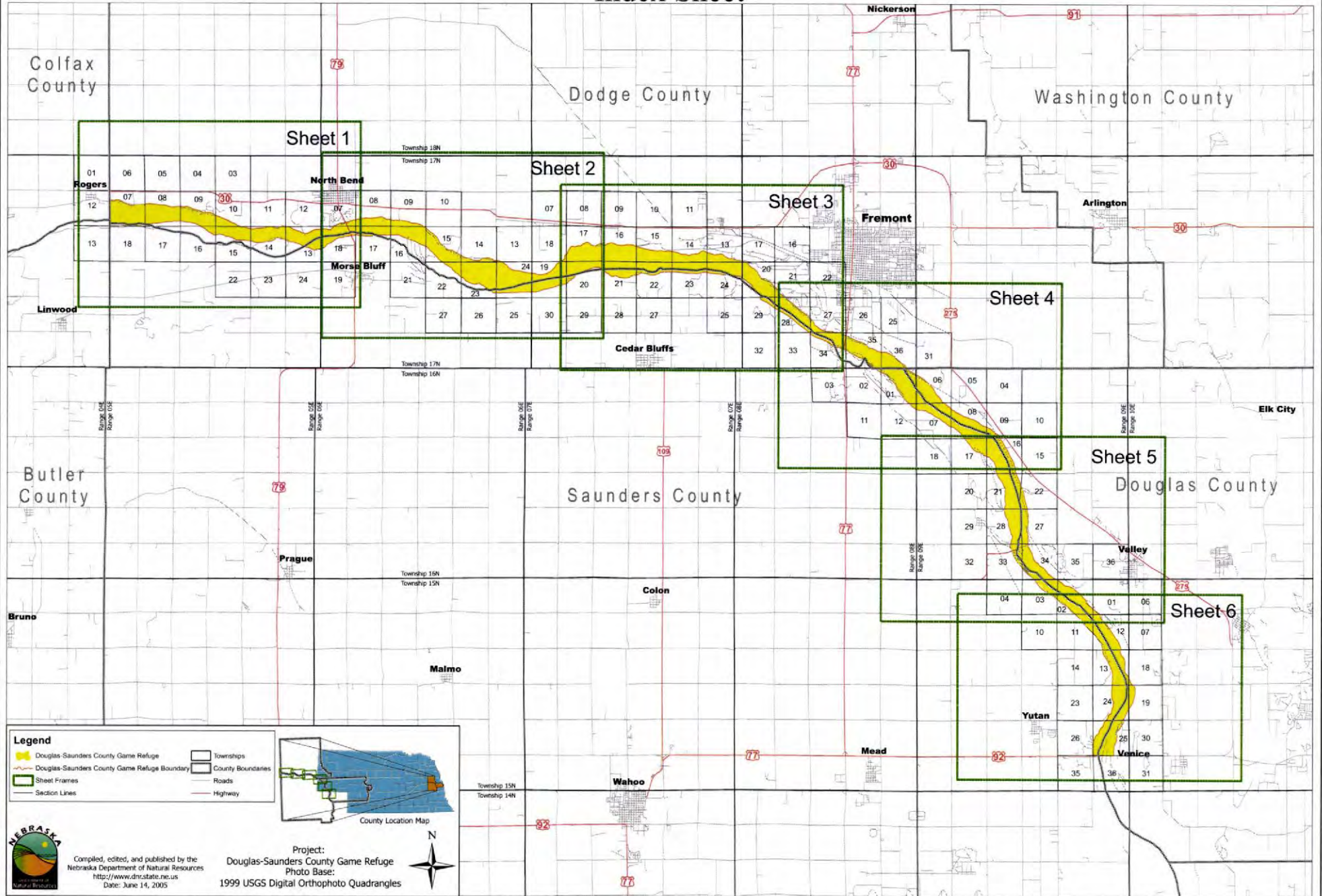
Compiled, edited, and published by the
Nebraska Department of Natural Resources
<http://www.dnr.ne.gov>
Date: November 1, 2016

Project:
Garden County State Game Refuge
Photo Base:
2014 FSA Orthoimagery



DOUGLAS-SAUNDERS COUNTY GAME REFUGE

Index Sheet



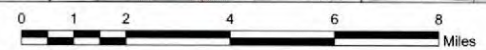
Legend

- Douglas-Saunders County Game Refuge
- Townships
- Douglas-Saunders County Game Refuge Boundary
- County Boundaries
- Sheet Frames
- Roads
- Section Lines
- Highway

County Location Map

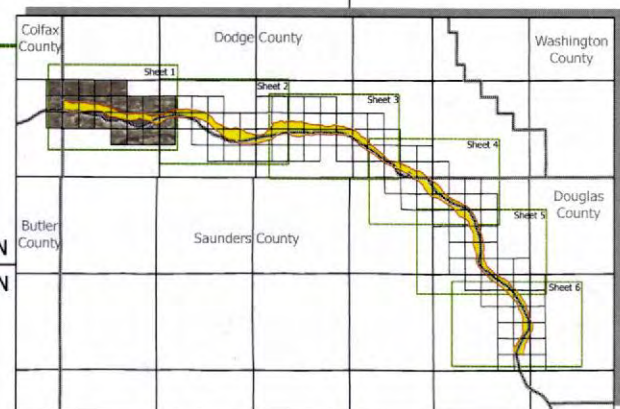
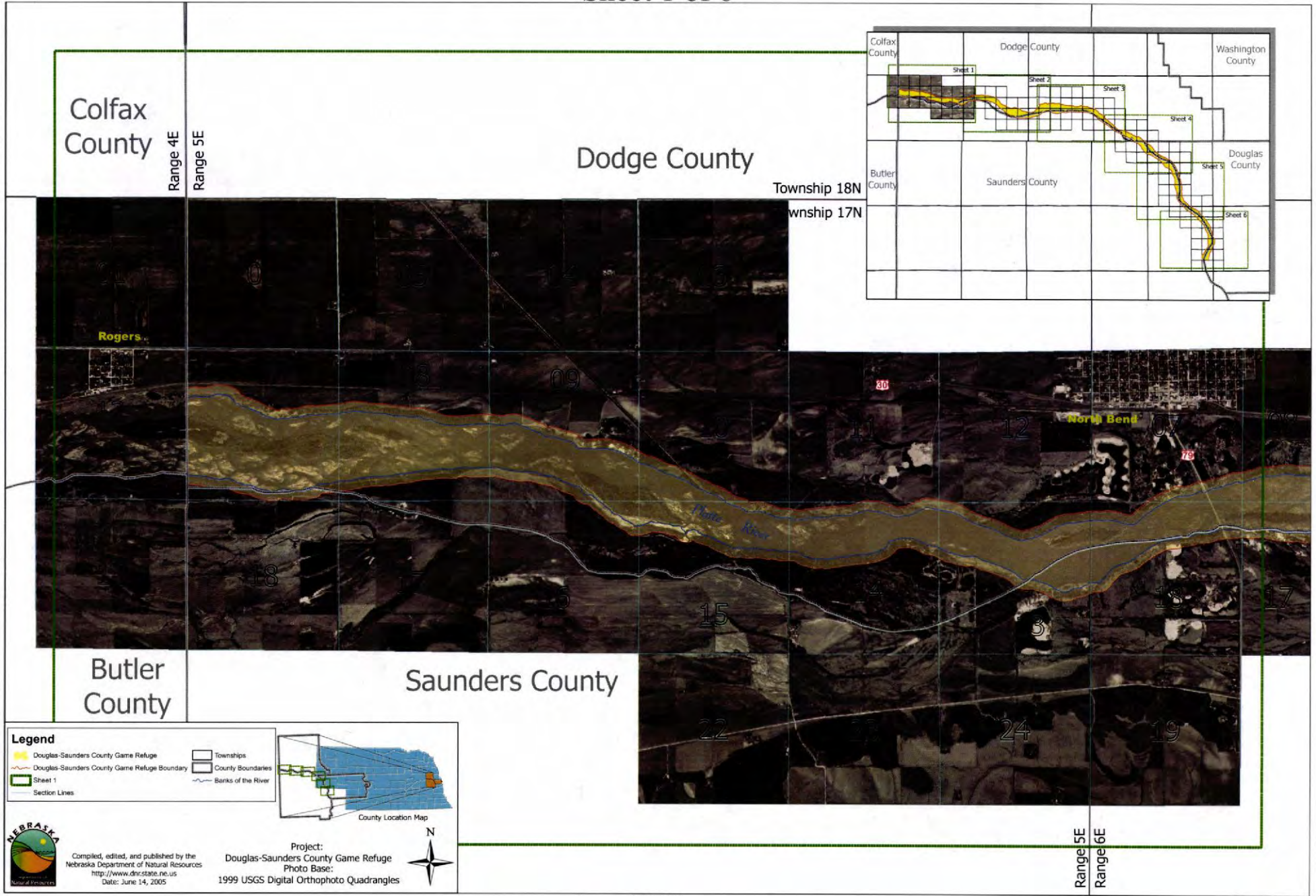
NEBRASKA
 Department of Natural Resources
 Compiled, edited, and published by the
 Nebraska Department of Natural Resources
<http://www.dnr.state.ne.us>
 Date: June 14, 2005

Project:
 Douglas-Saunders County Game Refuge
 Photo Base:
 1999 USGS Digital Orthophoto Quadrangles



DOUGLAS-SAUNDERS COUNTY GAME REFUGE

Sheet 1 of 6



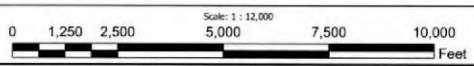
Legend

- Douglas-Saunders County Game Refuge
- Douglas-Saunders County Game Refuge Boundary
- Sheet 1
- Section Lines
- Townships
- County Boundaries
- Banks of the River

Project:
Douglas-Saunders County Game Refuge
Photo Base:
1999 USGS Digital Orthophoto Quadrangles

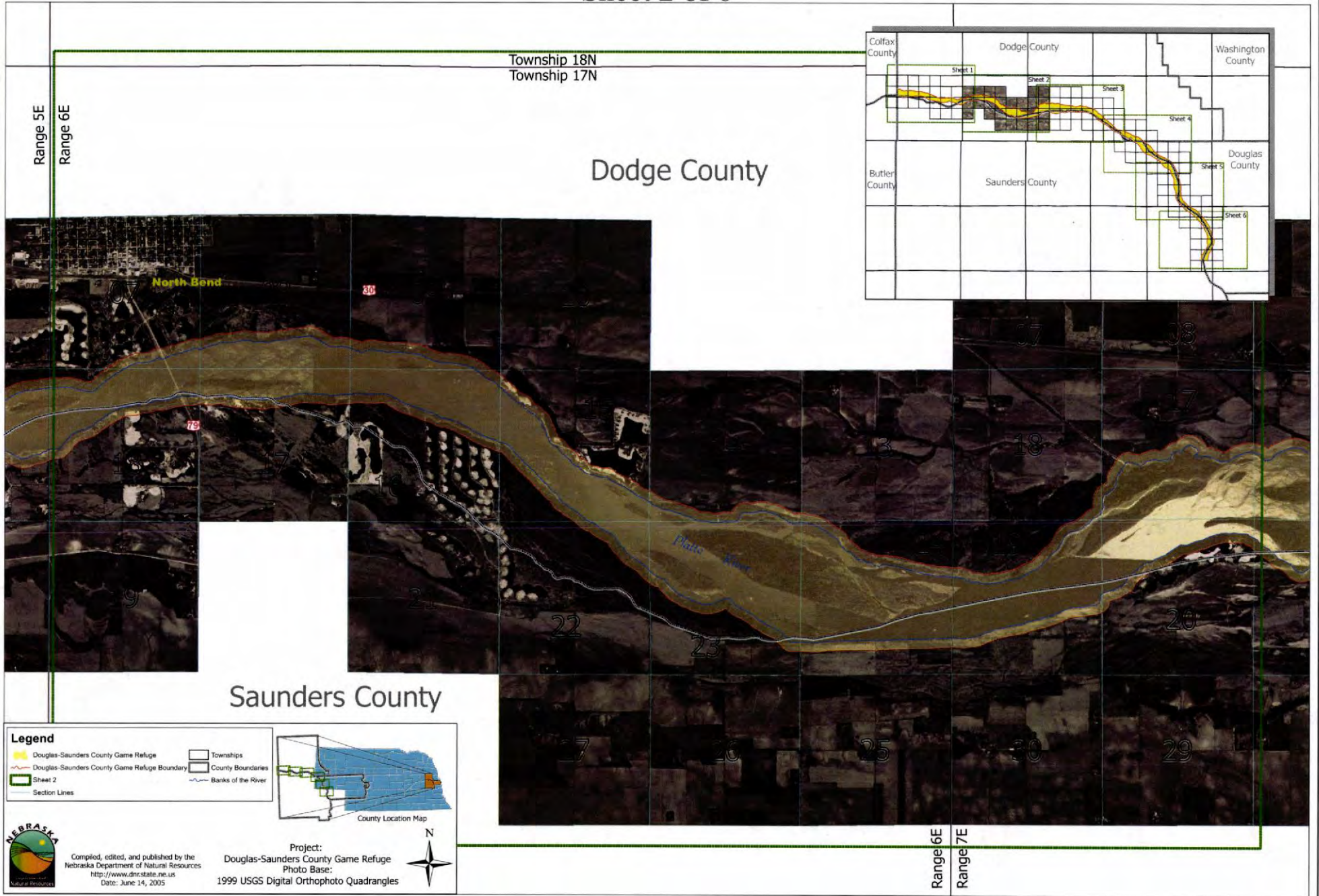
County Location Map

NEBRASKA
Department of Natural Resources
Compiled, edited, and published by the
Nebraska Department of Natural Resources
<http://www.dnr.state.ne.us>
Date: June 14, 2005



DOUGLAS-SAUNDERS COUNTY GAME REFUGE

Sheet 2 of 6



Legend

- Douglas-Saunders County Game Refuge
- Douglas-Saunders County Game Refuge Boundary
- Sheet 2
- Section Lines
- Townships
- County Boundaries
- Banks of the River

County Location Map

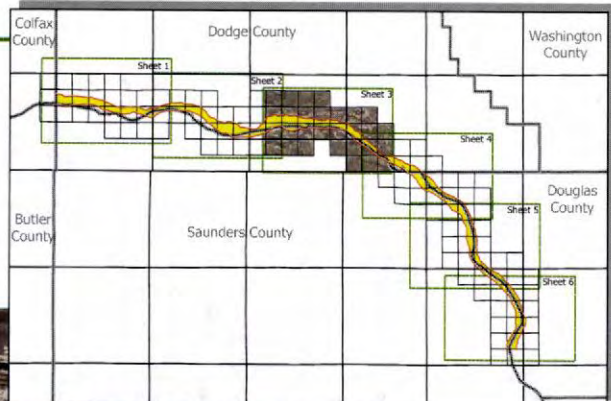
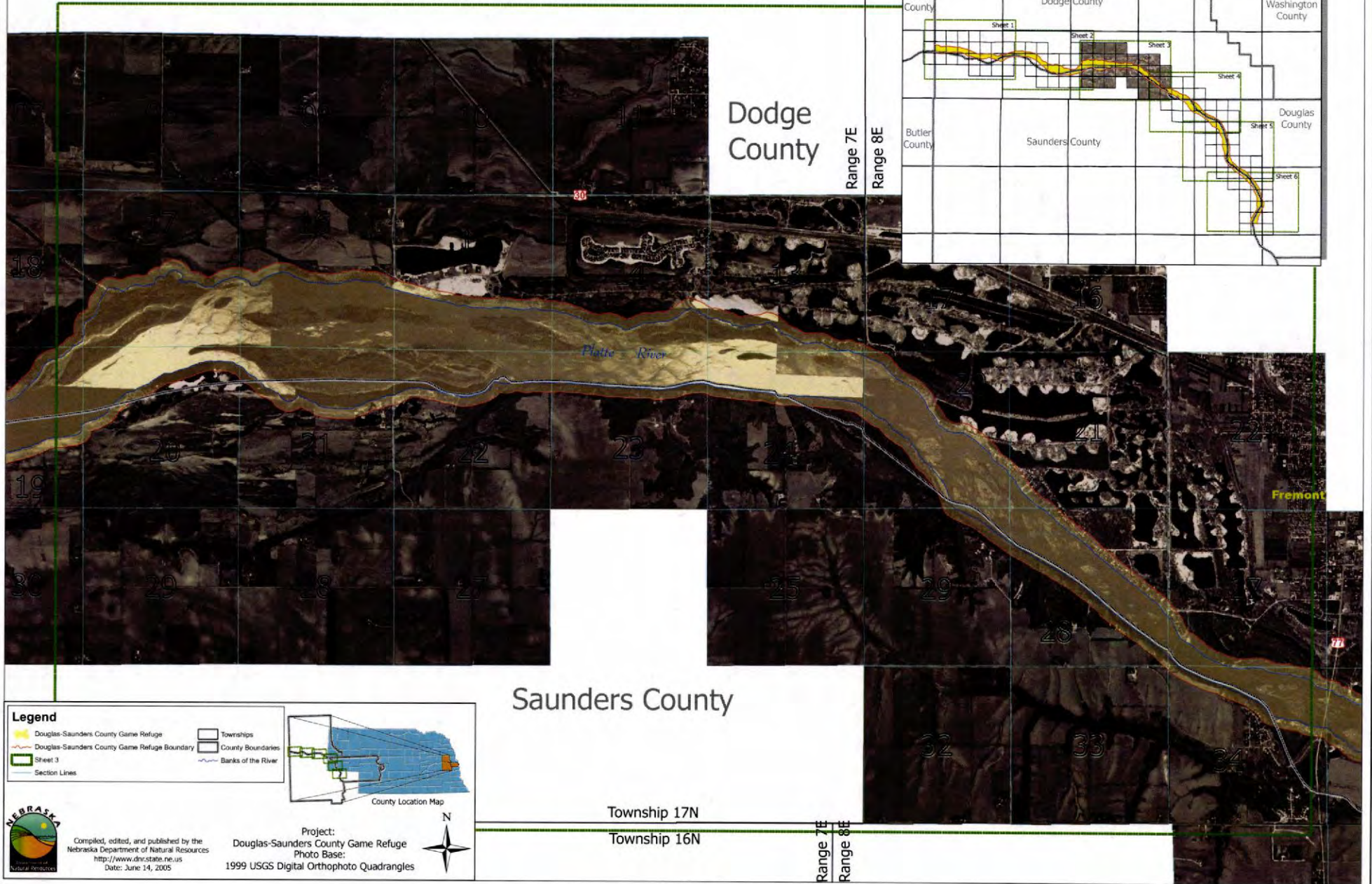
Project: Douglas-Saunders County Game Refuge
 Photo Base: 1999 USGS Digital Orthophoto Quadrangles

NEBRASKA
 Department of Natural Resources
 Compiled, edited, and published by the
 Nebraska Department of Natural Resources
<http://www.dnr.state.ne.us>
 Date: June 14, 2005



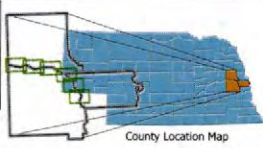
DOUGLAS-SAUNDERS COUNTY GAME REFUGE

Sheet 3 of 6



Legend

- Douglas-Saunders County Game Refuge
- Douglas-Saunders County Game Refuge Boundary
- Sheet 3
- Section Lines
- Townships
- County Boundaries
- Banks of the River



NEBRASKA
Department of Natural Resources

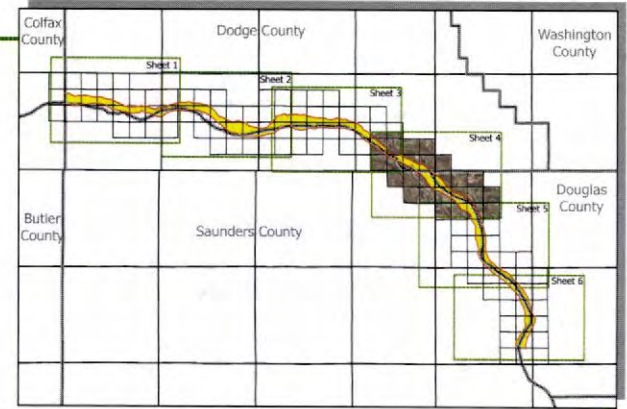
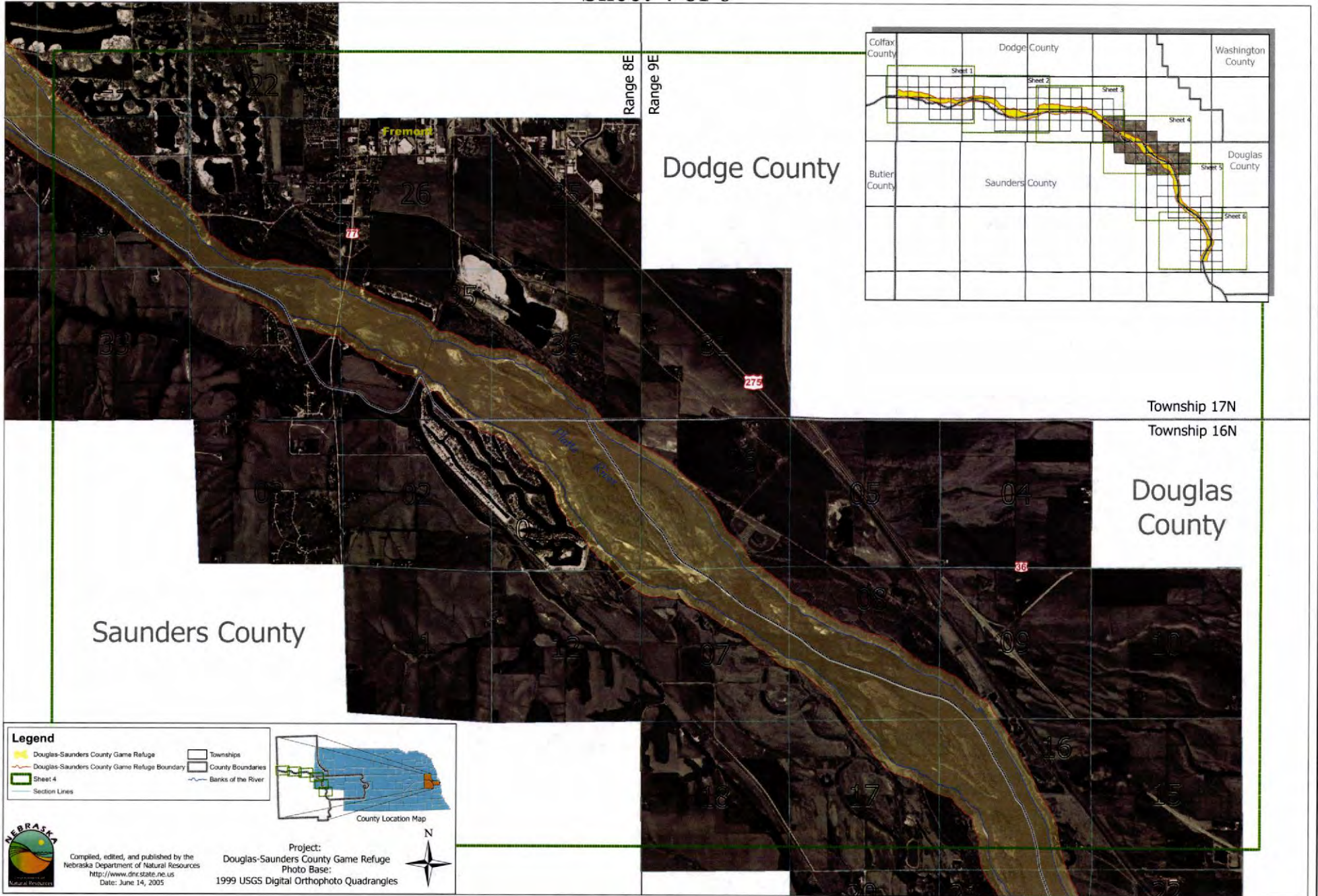
Compiled, edited, and published by the
Nebraska Department of Natural Resources
<http://www.dnr.state.ne.us>
Date: June 14, 2005

Project:
Douglas-Saunders County Game Refuge
Photo Base:
1999 USGS Digital Orthophoto Quadrangles

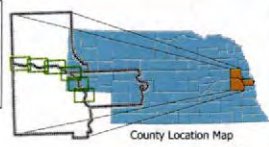


DOUGLAS-SAUNDERS COUNTY GAME REFUGE

Sheet 4 of 6



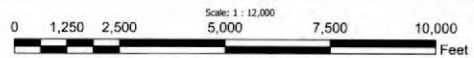
- Legend**
- █ Douglas-Saunders County Game Refuge
 - Douglas-Saunders County Game Refuge Boundary
 - █ Sheet 4
 - Section Lines
 - █ Townships
 - █ County Boundaries
 - Banks of the River



NEBRASKA
Department of Natural Resources

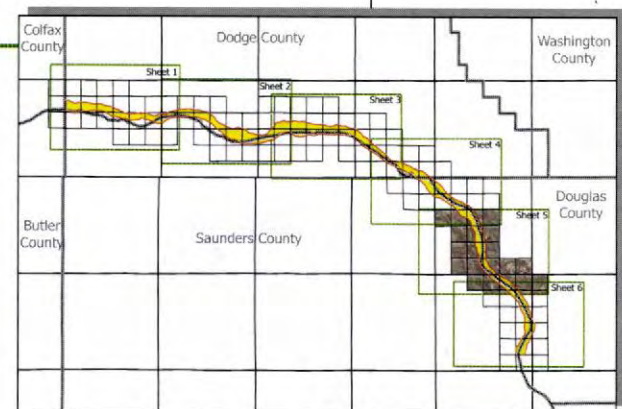
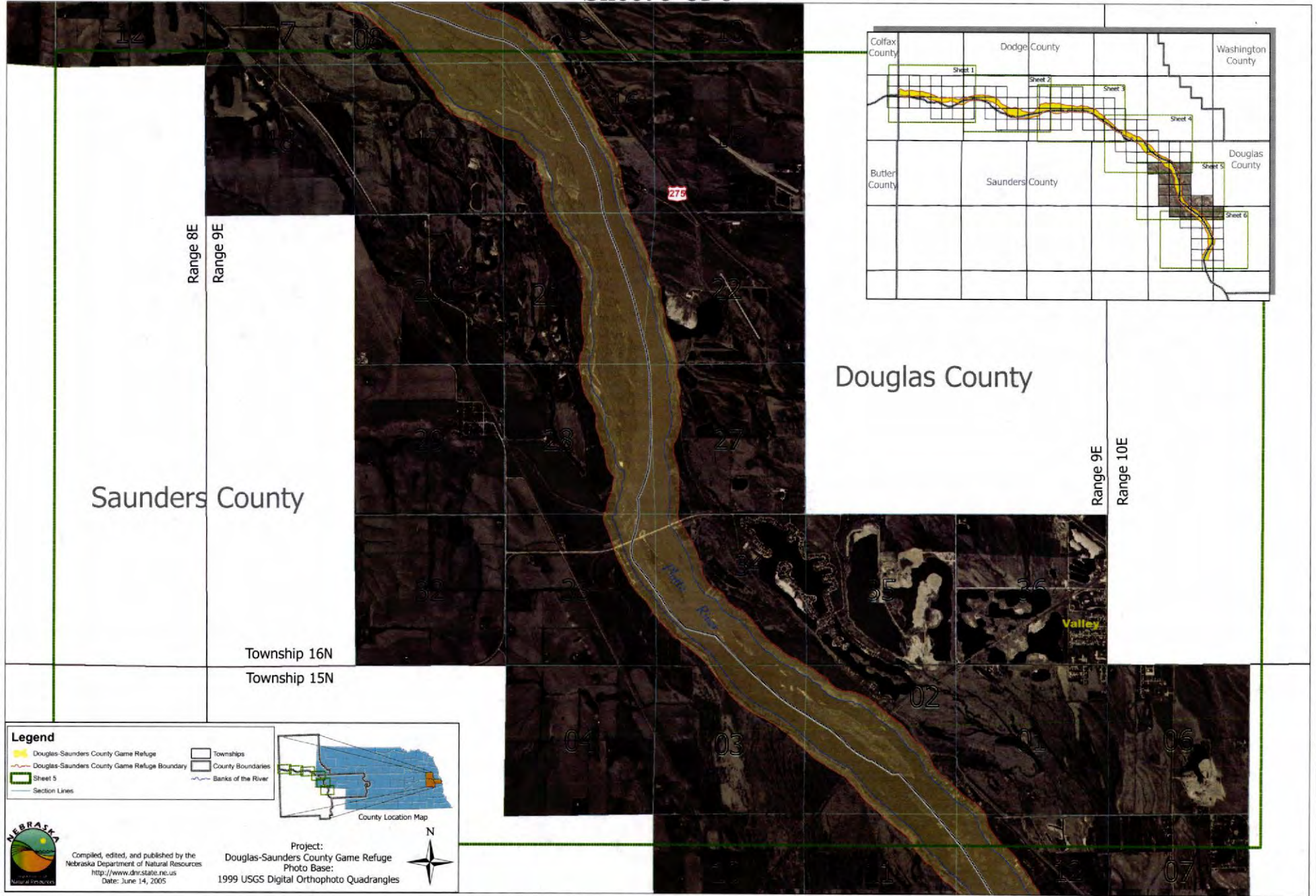
Compiled, edited, and published by the
Nebraska Department of Natural Resources
<http://www.dnr.state.ne.us>
Date: June 14, 2005

Project:
Douglas-Saunders County Game Refuge
Photo Base:
1999 USGS Digital Orthophoto Quadrangles



DOUGLAS-SAUNDERS COUNTY GAME REFUGE

Sheet 5 of 6



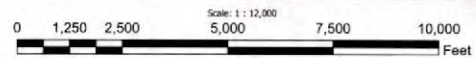
Legend

- Douglas-Saunders County Game Refuge
- Douglas-Saunders County Game Refuge Boundary
- Sheet 5
- Section Lines
- Townships
- County Boundaries
- Banks of the River

County Location Map

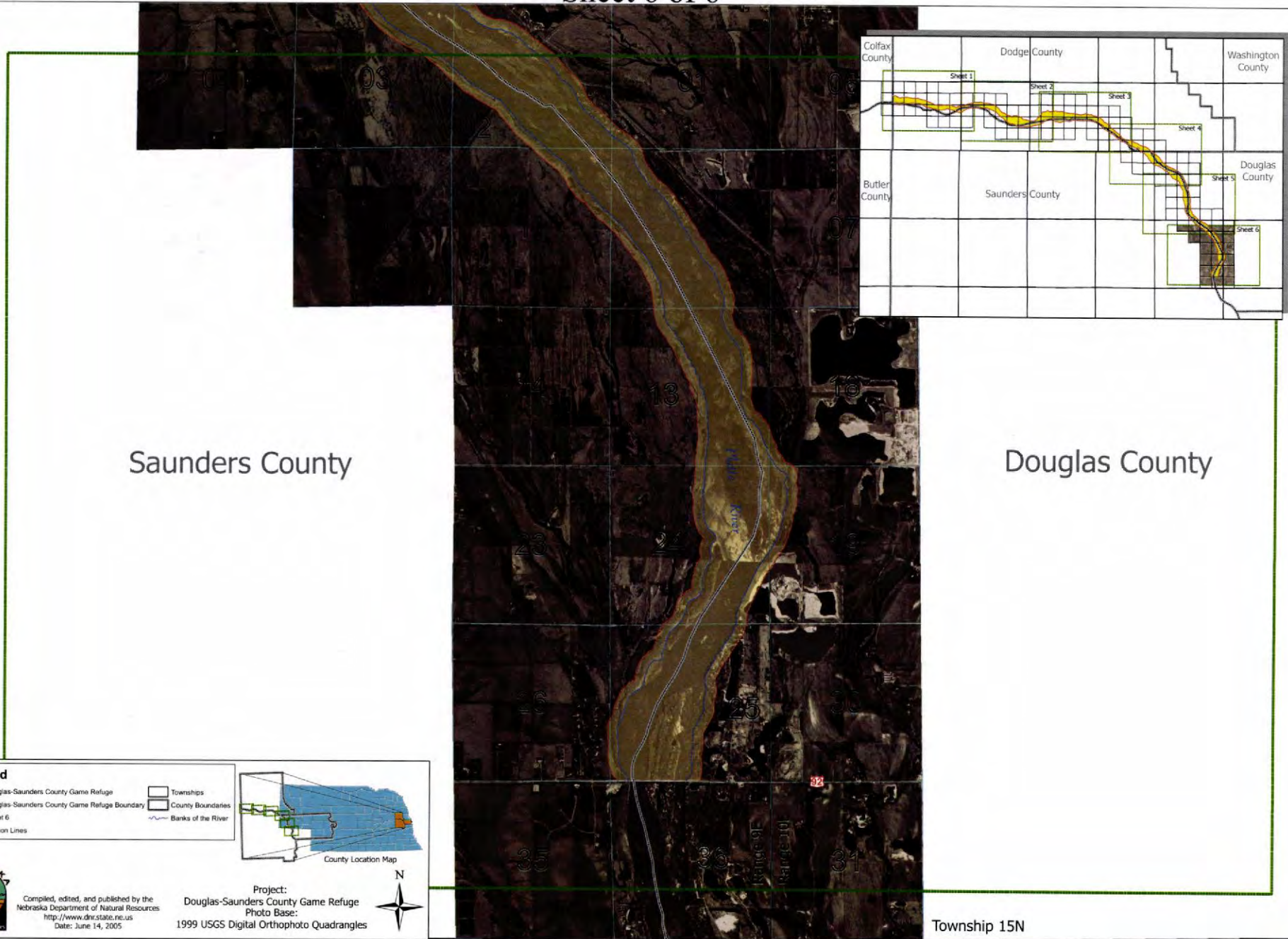
Project: Douglas-Saunders County Game Refuge
 Photo Base: 1999 USGS Digital Orthophoto Quadrangles

NEBRASKA
 Department of Natural Resources
 Compiled, edited, and published by the
 Nebraska Department of Natural Resources
<http://www.dnr.state.ne.us>
 Date: June 14, 2005



DOUGLAS-SAUNDERS COUNTY GAME REFUGE

Sheet 6 of 6



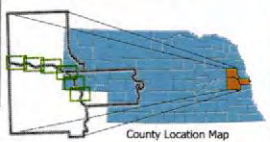
Saunders County

Douglas County

Township 15N

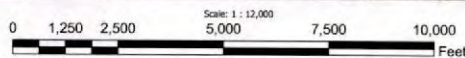
Legend

- Douglas-Saunders County Game Refuge
- Douglas-Saunders County Game Refuge Boundary
- Sheet 6
- Section Lines
- Townships
- County Boundaries
- Banks of the River



Compiled, edited, and published by the
Nebraska Department of Natural Resources
<http://www.dnr.state.ne.us>
Date: June 14, 2005

Project:
Douglas-Saunders County Game Refuge
Photo Base:
1999 USGS Digital Orthophoto Quadrangles



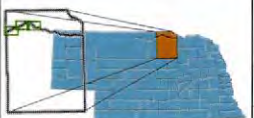
NIOBRARA RIVER GAME REFUGE

Index Sheet



Legend

- Niobrara River Game Refuge
- Niobrara River Game Refuge Boundary
- Sheet Frames
- Section Lines
- Townships
- County Boundaries
- Roads
- Highway



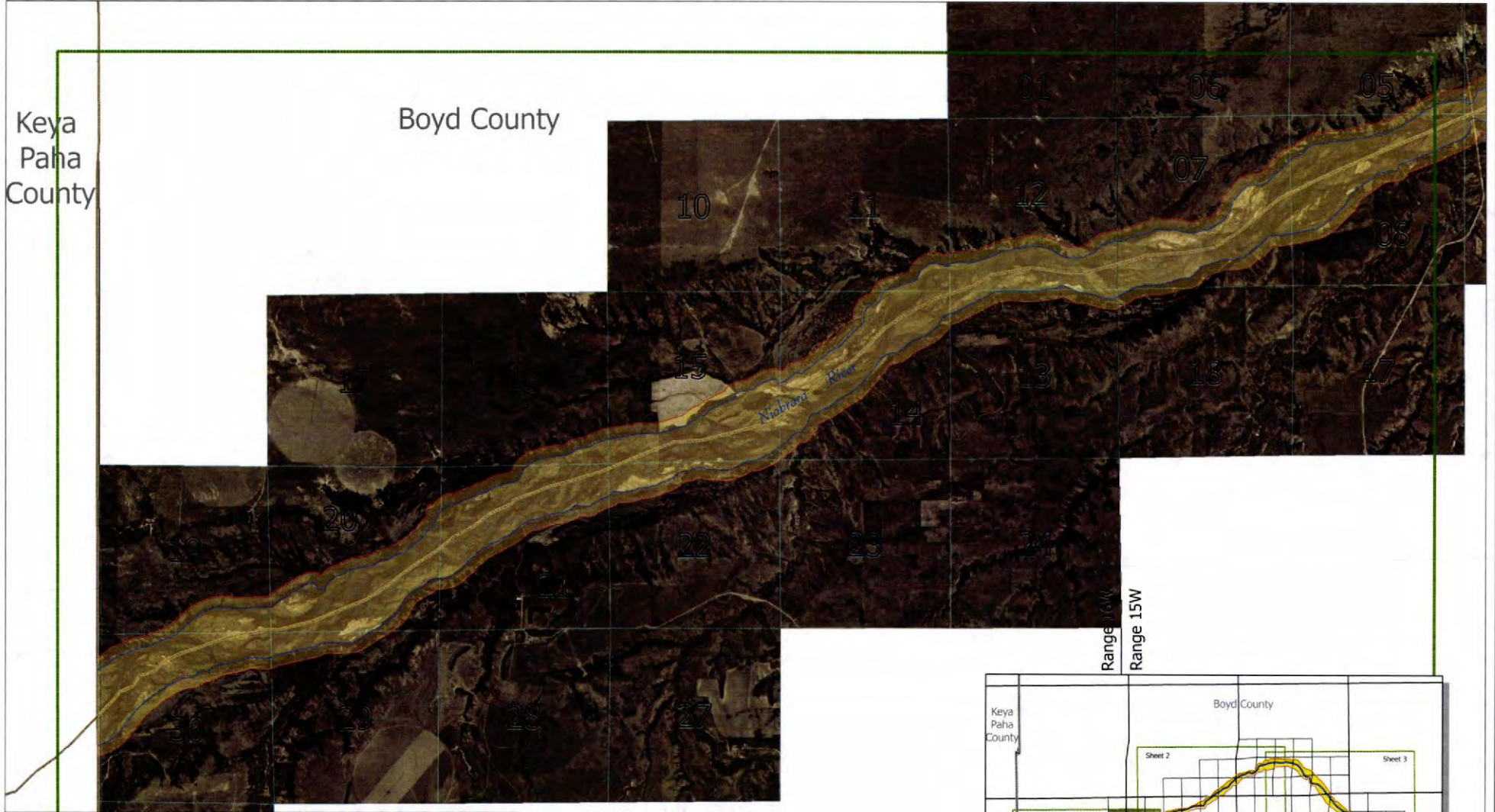
NEBRASKA
 Compiled, edited, and published by the
 Nebraska Department of Natural Resources
<http://www.dnr.state.ne.us>
 Date: June 10, 2005

Project:
 Niobrara River Game Refuge
 Planimetric Data:
 TIGER Files, US Census Bureau, 2000



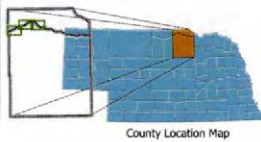
NIORARA RIVER GAME REFUGE

Sheet 1 of 3

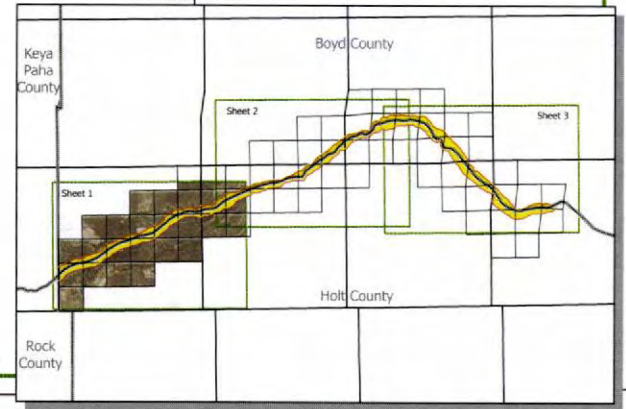


Legend

- Niobrara River Game Refuge
- Niobrara River Game Refuge Boundary
- Sheet 1
- Section Lines
- Townships
- County Boundaries
- Banks of the River



Holt County

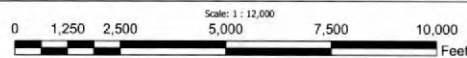


Compiled, edited, and published by the
Nebraska Department of Natural Resources
<http://www.dnr.state.ne.us>
Date: June 10, 2005

Project:
Niobrara River Game Refuge
Photo Base:
1999 USGS Digital Orthophoto Quadrangles

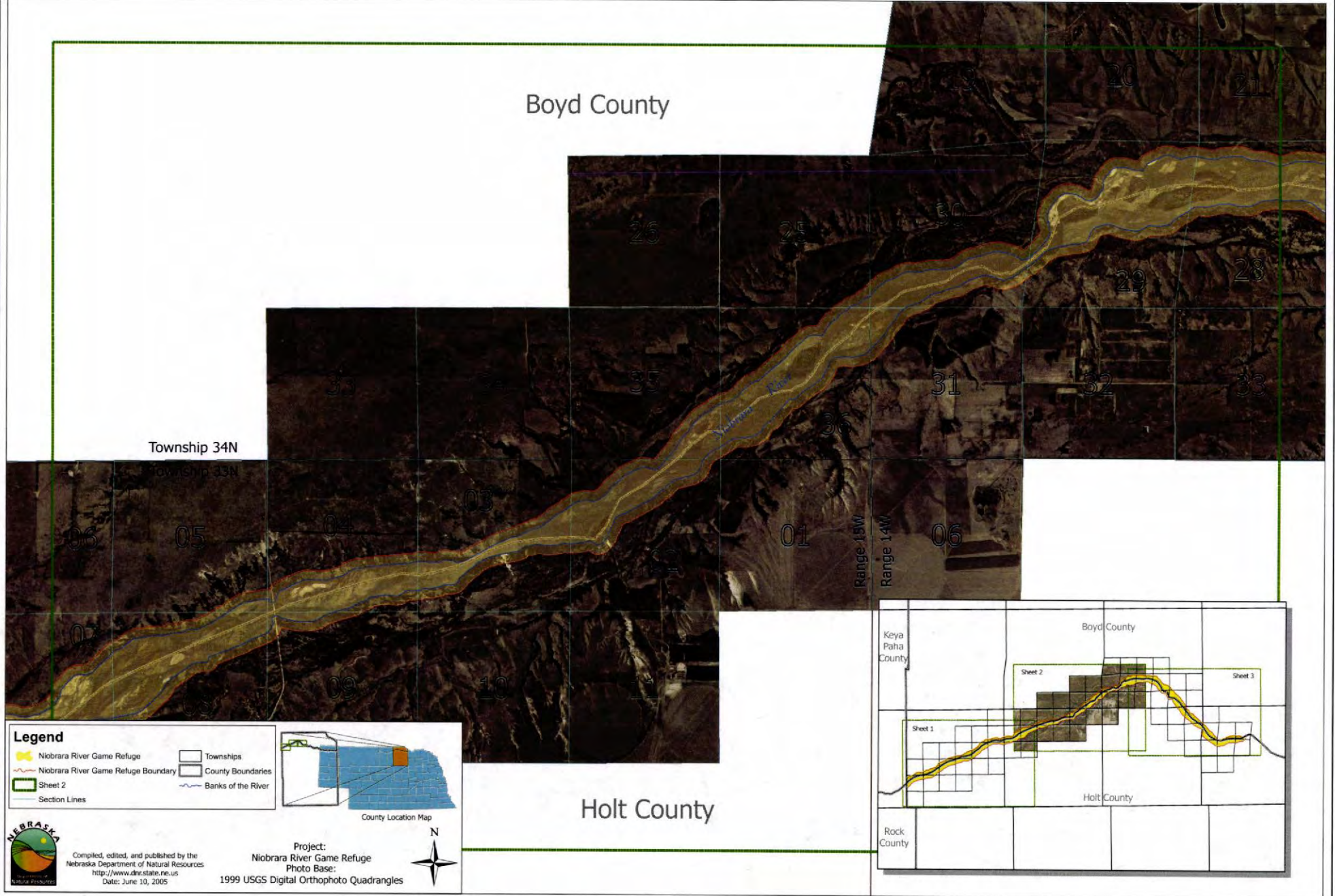


Township 33N
Township 32N



NIORARA RIVER GAME REFUGE

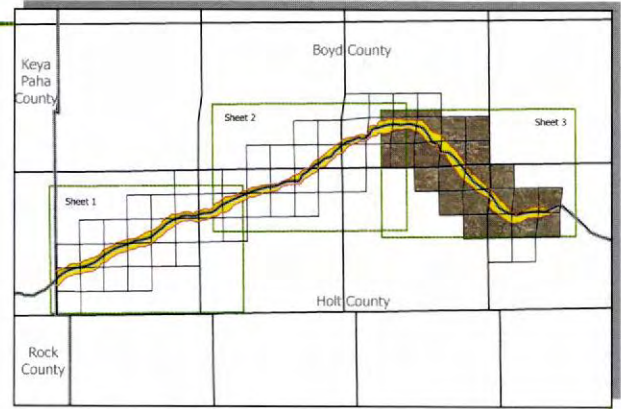
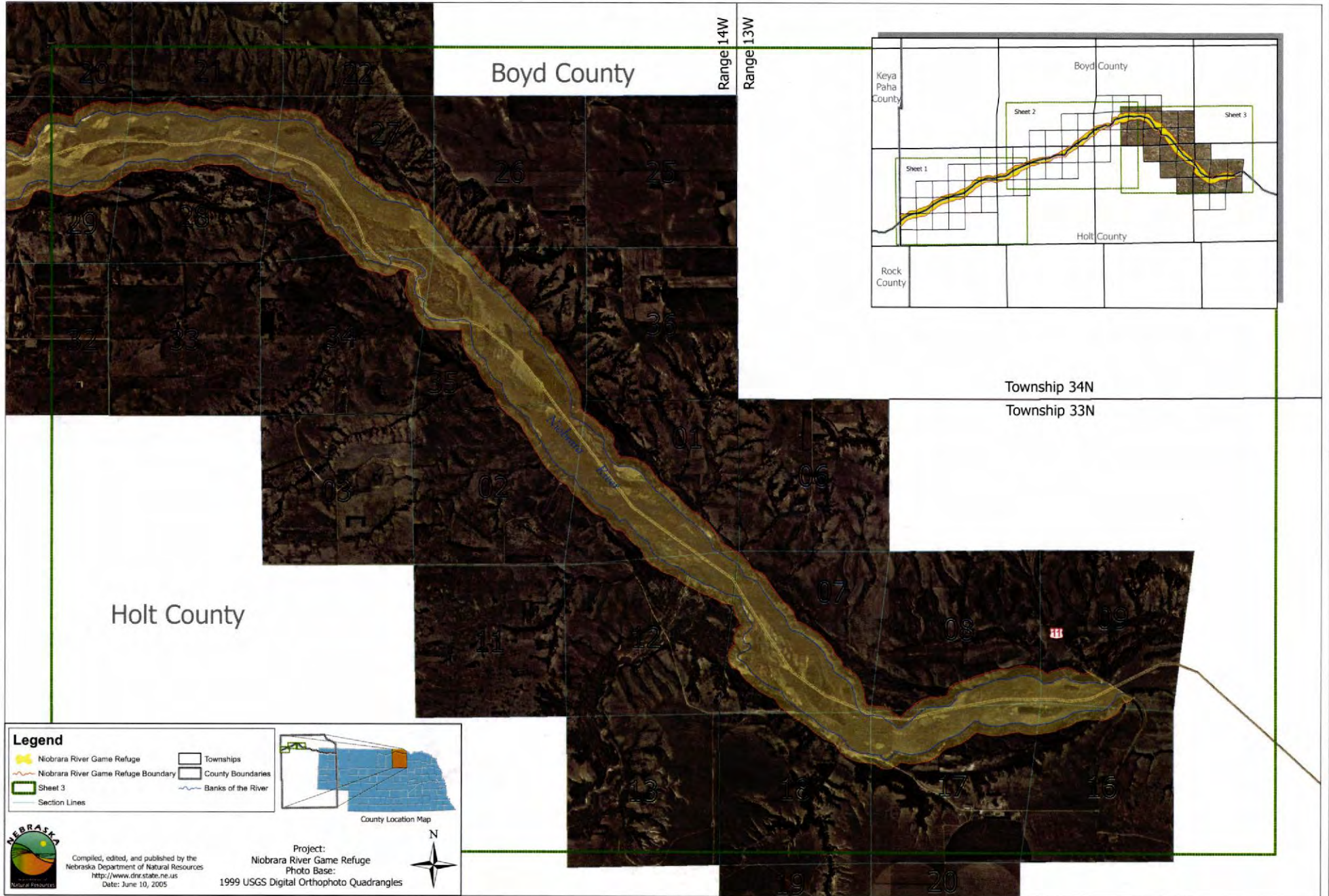
Sheet 2 of 3



Compiled, edited, and published by the
Nebraska Department of Natural Resources
<http://www.dnr.state.ne.us>
Date: June 10, 2005

NIOBRARA RIVER GAME REFUGE

Sheet 3 of 3



Legend

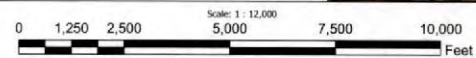
- Niobrara River Game Refuge
- Niobrara River Game Refuge Boundary
- Sheet 3
- Section Lines
- Townships
- County Boundaries
- Banks of the River

County Location Map

Project:
Niobrara River Game Refuge
Photo Base:
1999 USGS Digital Orthophoto Quadrangles

NEBRASKA
Natural Resources

Compiled, edited, and published by the
Nebraska Department of Natural Resources
<http://www.ndnr.state.ne.us>
Date: June 10, 2005



NORTH PLATTE RIVER GAME REFUGE

Sheet 1 of 1

Range 31W
Range 30W

Range 30W
Range 29W



Township 14N
Township 13N

Legend

- North Platte Game Refuge
- North Platte Game Refuge Boundary
- View Extent
- Section Lines
- Townships
- Banks of the River



County Location Map



Compiled, edited, and published by the
Nebraska Department of Natural Resources
<http://www.dnr.state.ne.us>
Date: June 8, 2005

Project:
North Platte River Game Refuge
Photo Base:
1999 USGS Digital Orthophoto Quadrangles

